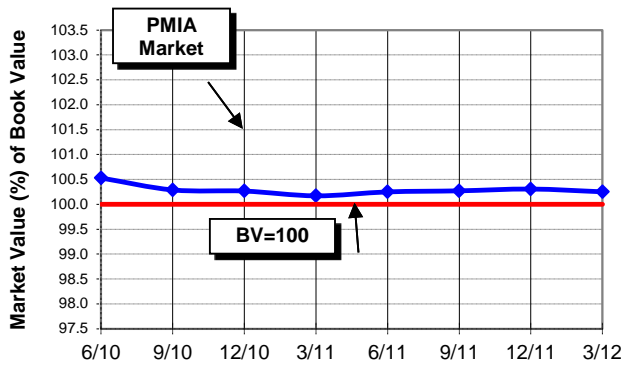


MONTHLY PERFORMANCE AND COMPLIANCE
Pooled Money Investment Account

April 2012

	4/30/2012	3/31/2012	Prior 12 Months HIGH	LOW	Target or Cap
Average Life (days)	221	243	260	185	4 mos - 18 mos
Reverse Repo % of Portfolio	0.00	0.00	0.00	0.00	10 or less
Commercial Paper % of Portfolio	3.56	0.62	11.27	0.62	30 or less
Inverse Yield Securities (%)	0.00	0.00	0.00	0.00	0.00

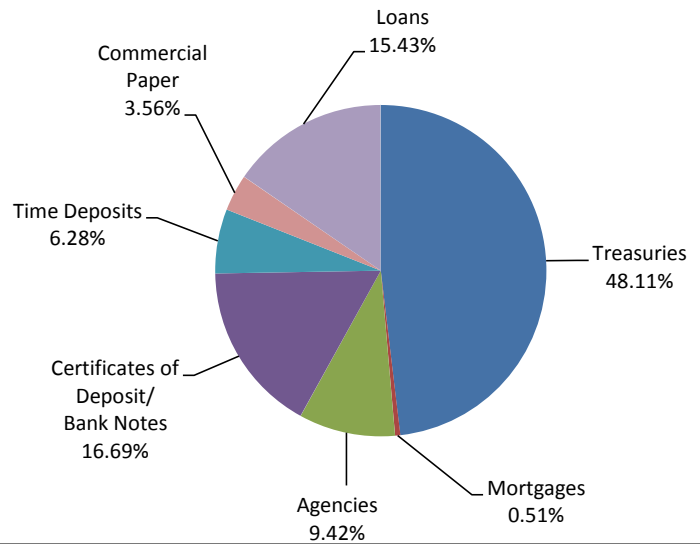
PMIA MARKET VALUATION



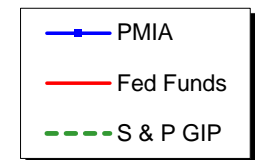
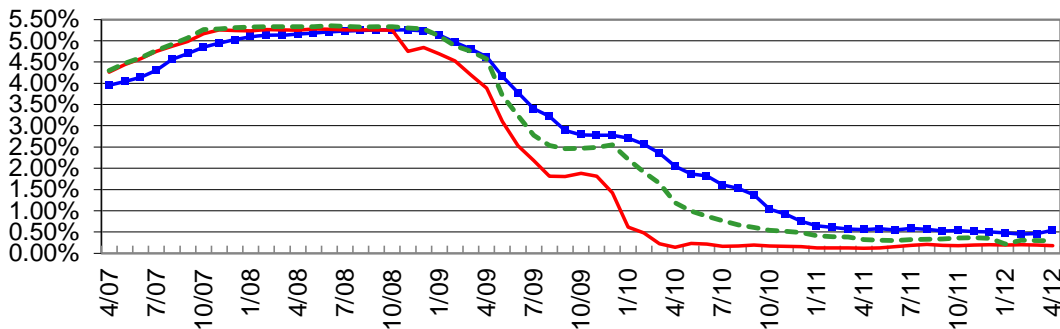
MARKET VALUE 06/30/10 THROUGH 03/31/12

Jun-10	100.2705	Jun-11	100.2456
Sep-10	100.3064	Sep-11	100.2809
Dec-10	100.2509	Dec-11	100.2446
Mar-11	100.2623	Mar-12	100.2129

PMIA Portfolio Composition--4/30/12
\$68.8 billion



Average Monthly Yield Comparison - 04/07 through 04/12



APRIL YIELDS

PMIA	0.367%
Fed Funds	0.152%
S & P GIP	0.260%