

2018 TCAC/HCD OPPORTUNITY AREA MAP

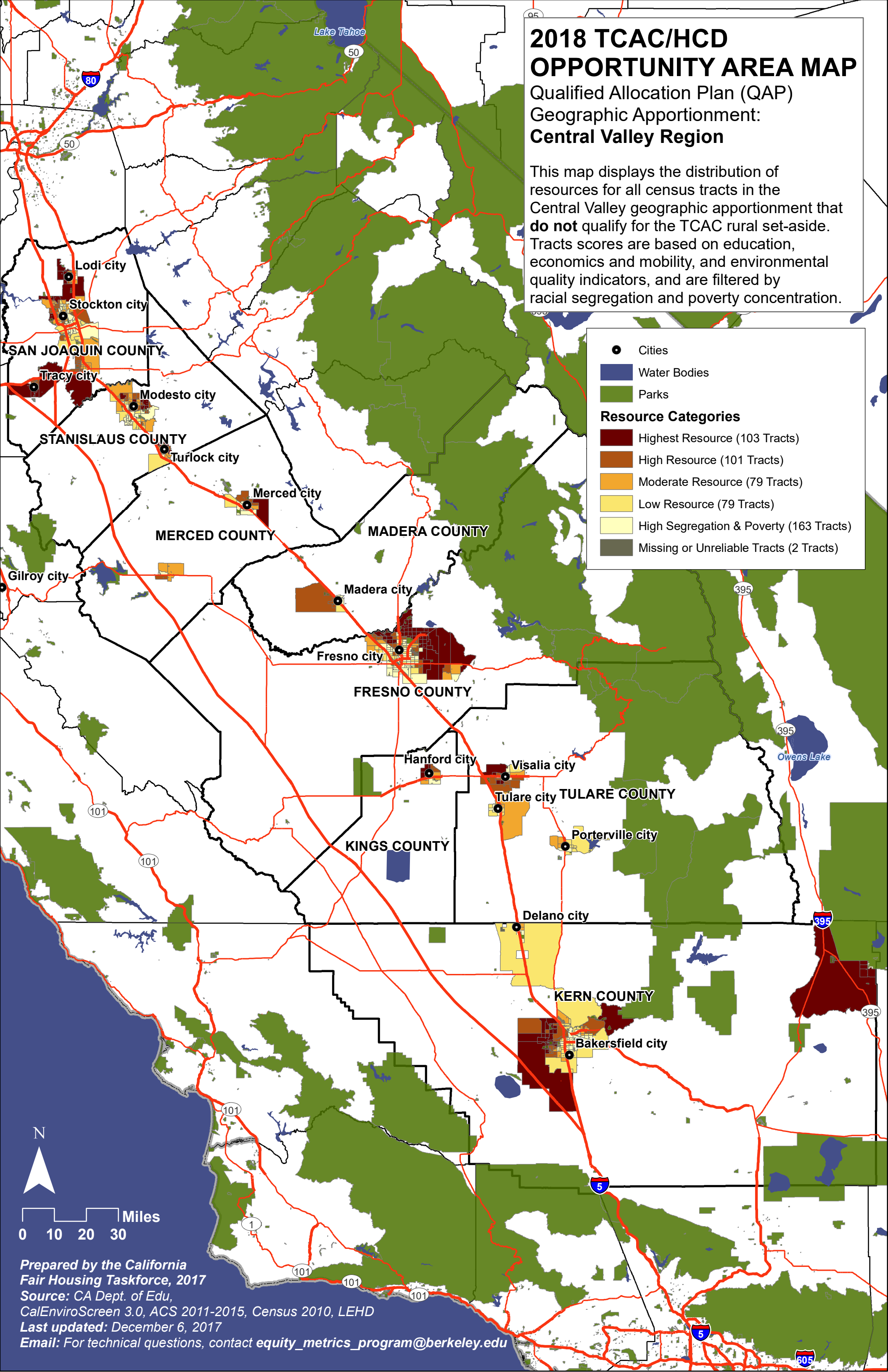
Qualified Allocation Plan (QAP)
Geographic Apportionment:
Central Valley Region

This map displays the distribution of resources for all census tracts in the Central Valley geographic apportionment that **do not** qualify for the TCAC rural set-aside. Tracts scores are based on education, economics and mobility, and environmental quality indicators, and are filtered by racial segregation and poverty concentration.

- Cities
- Water Bodies
- Parks

Resource Categories

- Highest Resource (103 Tracts)
- High Resource (101 Tracts)
- Moderate Resource (79 Tracts)
- Low Resource (79 Tracts)
- High Segregation & Poverty (163 Tracts)
- Missing or Unreliable Tracts (2 Tracts)



N

Miles
0 10 20 30

Prepared by the California Fair Housing Taskforce, 2017
Source: CA Dept. of Edu, CalEnviroScreen 3.0, ACS 2011-2015, Census 2010, LEHD
Last updated: December 6, 2017
Email: For technical questions, contact equity_metrics_program@berkeley.edu