



TRANSITION TO ADULTHOOD

Presented by:
Cori Reifman, Benefits Specialist
Josephina Cunningham, Client Services Manager
Harbor Regional Center

Who We Are

Regional Centers provide information, services, and supports to individuals who have intellectual and developmental disabilities and their circle of support.

Harbor Regional Center is 1 of 21 Regional Centers throughout the state of California.

What We Do

Intake and Eligibility

Diagnosis, assessment,
referrals and evaluation

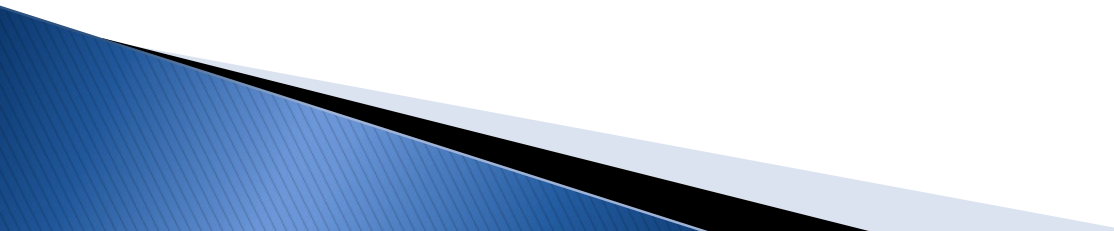
Early Start

Infants and toddlers who are
at risk of having a
developmental disability

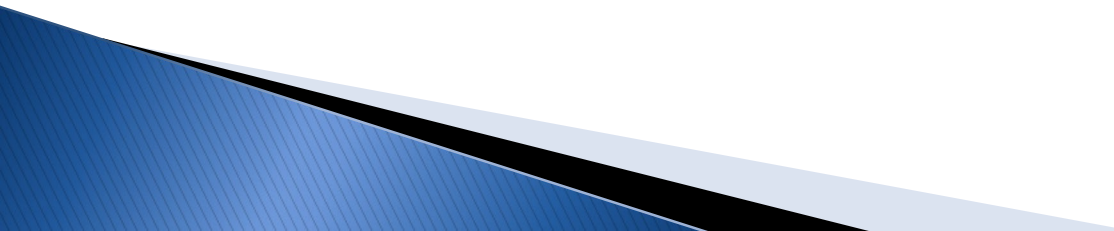
Lanterman, age 3 and up

Intellectual Disability, Autism,
Epilepsy, Cerebral Palsy, Condition
Similar

? Transition Supports/Services

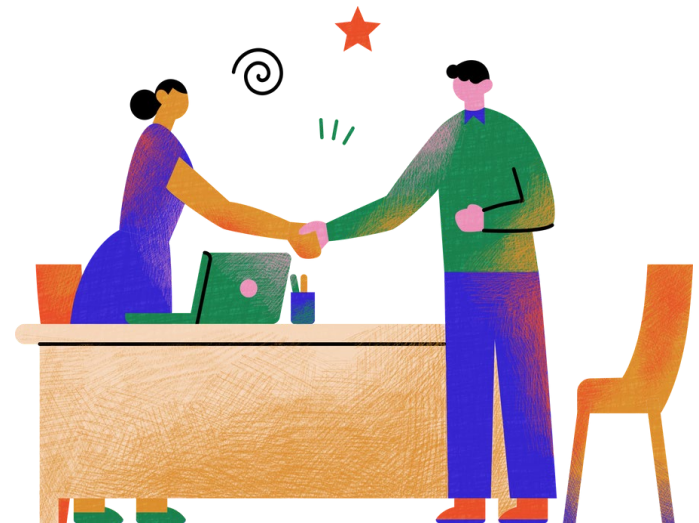
- ▶ Employment
 - ▶ Day Program
 - ▶ Living Options
 - ▶ Independent Living
 - ▶ Transportation
 - ▶ Post Secondary Programs
 - ▶ Coordinated Family Services
- 

Coordinated Family Services

- ▶ Specifically for Individuals who chose to live in the family home
 - ▶ Provides assistance with coordination of services and supports
 - ▶ Increases engagement within their community
 - ▶ Assistance with accessing publicly funded resources
- 

Employment

- ▶ Supported Employment
- ▶ Paid Internship Program (PIP)
- ▶ Job Preparation Courses



Day Programs

- ▶ **FULL INCLUSION**

- ▶ Individuals participate in activities an average of 2/3 in the community

- ▶ **PARTIAL INCLUSION**

- ▶ Individuals participate in activities an average of 1/3 in the community

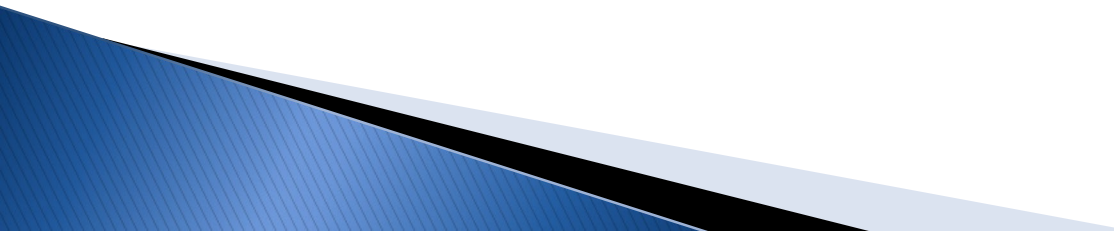
- ▶ **PARTIAL WORK**

- ▶ Individuals work up to 50% of the program day

- ▶ **THERAPEUTIC**

- ▶ Enriched staffing for individuals involved medically
- 

Living Options

- Group Homes
 - Hope Housing
 - Supported Living Services
 - Supports for individuals living independently
 - Independent Living Services
 - Supports for individuals who plan to live independently
- 

Transportation



- ▶ Agency Contracted
- ▶ Participant Directed
- ▶ Access
- ▶ Bus Pass

Post Secondary

▶ COLLEGE 2 CAREER

- Partnership with Long Beach City College, Hope, California Mentor, DOR to provide educational guidance and support to implement the individual's education plan and employment goal with affordable student housing

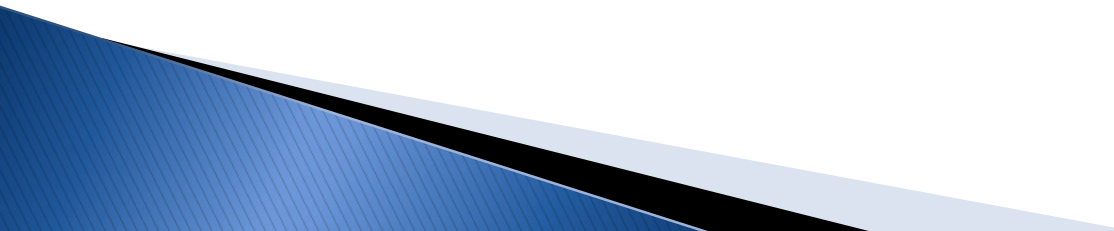
▶ COLLEGE SUPPORT SERVICES

- Assistance in registration and navigating the college campus and system

Accessing Generic Resources

Regional Centers provide case management and support services but also assist families to access other supports including health insurance and public programs.

► **Generic Resources are:**

- Public programs that provide cash/voucher support or health care services.
 - Often low or no cost to the individual.
- 

Common Generic Resources

SSI

- ▶ Apply at age 18 (if not receiving)
- ▶ Medi-Cal is automatic
- ▶ SSA looks at age, income and living arrangement as well as medical condition/disability

Medi-Cal

- ▶ Health Insurance
 - Medical and Dental care
 - Prescription medications
 - Medical equipment
 - Rehabilitation services
 - Long term care

IHSS

Personal care and related services for individuals who need assistance to remain safely in their own home

Medically Involved Individuals

EPSDT and CCS

- Early and Periodic Screening, Diagnosis and Treatment (EPSDT)
 - Must have Medi-Cal
 - Shift nursing services
- California Children's Services (CCS)
 - Medical Eligibility
 - Medical Therapy Program
- Eligibility ends at age 21

HCBA Waiver

- Home and Community Based Alternatives Waiver (HCBA)
 - Must have Medi-Cal
 - Case management and support services for individuals at risk for nursing home/facility placement.
 - Must need acute, sub-acute or nursing facility level of care
- No age requirement

Benefits Consultation & Support

Consultation with staff and families including:

- ▶ SSI and SSA Benefits
 - ▶ Medi-Cal
 - ▶ IHSS
 - ▶ EPSDT and HCBA Waiver
 - ▶ Private Insurance
 - ▶ Medicare
 - ▶ ABLE Accounts
- 

Technical Support

- ▶ Program Eligibility
- ▶ Applications
- ▶ Access to Care/Coverage
- ▶ Denials/Terminations
- ▶ Appeal and Hearings
- ▶ Billing issues
- ▶ Workshops for Families



Clinical Consult Team



Psychological & Behavioral, Health and Early Childhood Developmental Services Teams

The goal of the clinical consultants is to provide guidance regarding the complex needs of individuals as it pertains to their overall health and well-being in home, school and community.

- Consulting Physicians (MDs)
- Consulting Nurses (RNs)
- Consulting Pharmacist
- Dental Coordinator (RDH)
- Consulting Psychologists (Ph.D.)
- Consulting BCBAs (Board Certified Behavior Analysts)
- Forensic Specialist (Supporting those who become Judicially involved)
- Occupational Therapist
- Speech and Language Pathologist
- Early Childhood Specialist

More Information & Resources

Where to find more information

- Family Resource Center
- Workshops and Events
- Parent Support Groups
- And More

<https://www.harborrc.org/>



Tying It All Together

The Regional Center is here to help with

- Identifying the needs of your child
- Connecting you/your child with public programs and support services
- Future planning

For more information or to locate your local Regional Center, go to the Department of Developmental Services (DDS) website

- <https://www.dds.ca.gov/rc/>



THANK YOU

HARBOR REGIONAL CENTER

310-540-1711

<https://www.harborrc.org>

