



CalSavers Retirement Savings Program Participation & Funding Snapshot as of 8/31/21

Employers	8/31/2021	7/31/2021	Change	% Change
1 Employers Registered	14,133	13,660	473	3.5%
2 Employers Uploaded Roster	9,794	9,207	587	6.4%
3 Employers Started Payroll Deductions	5,396	4,750	646	13.6%
4 Exempted Employers	52,261	51,327	934	1.8%

Participants

5 Funded Accounts	180,387	167,696	12,691	7.6%
6 Payroll Contributing Accounts	192,875	179,072	13,803	7.7%
7 Multiple Employer Accounts	55,669	49,146	6,523	13.3%
8 Effective Opt-Out Rate	29.85%	30.08%	-0.23%	-0.8%

Funding

9 Total Assets	\$117,086,372	\$102,327,624	\$14,758,749	14.4%
10 Average Funded Account Balance	\$649	\$610	\$39	6.4%
11 Total Contributions Amount	\$123,711,124	\$109,209,210	\$14,501,914	13.3%
12 Average Monthly Contribution Amount	\$143	\$137	\$6	4.2%
13 Median Monthly Contribution Amount	\$116	\$112	\$4	3.5%
14 Average Contribution Rate	5.09%	5.09%	0.00%	0.0%
15 Amount of Withdrawals	\$11,994,749	\$10,315,231	\$1,679,518	16.3%
16 Accounts with a Full Withdrawal	23,306	21,466	1,840	8.6%
17 Accounts with a Partial Withdrawal	1,271	1,069	202	18.9%
18 Withdrawal Rate*	12.08%	11.99%	0.10%	0.8%

Status of Estimated Eligible Employers by Wave

Wave (Deadline)	Employers Registered	Employers Exempted	Total Employers Responded	Total Estimated Eligible Employers^	Employer Response Rate	Employers Added Roster		Employers Started Payroll	
						Employers	% of Registered	Employers	% of Registered
Wave 1 (9/30/20)	1,961	4,853	6,814	8,029	84.87%	1,576	80.37%	1,276	65.07%
Wave 2 (6/30/21)	3,357	4,571	7,928	11,133	71.21%	2,367	70.51%	1,322	39.38%
Wave 3 (6/30/22)	8,815	42,837	51,652	281,572	18.34%	5,638	63.96%	2,635	29.89%
Total	14,133	52,261	66,394	300,734	22.08%	9,581	67.79%	5,233	37.03%

*The withdrawal rate is calculated as Accounts with a full withdrawal as a percent of Payroll Contributing Accounts

^Employer size is recalculated annually based on data obtained from the Employment Development Department. Data in the table above reflects the recalculation based on 2020 EDD reports.

Historic participation reports are available at: <https://www.treasurer.ca.gov/calsavers/reports.asp>

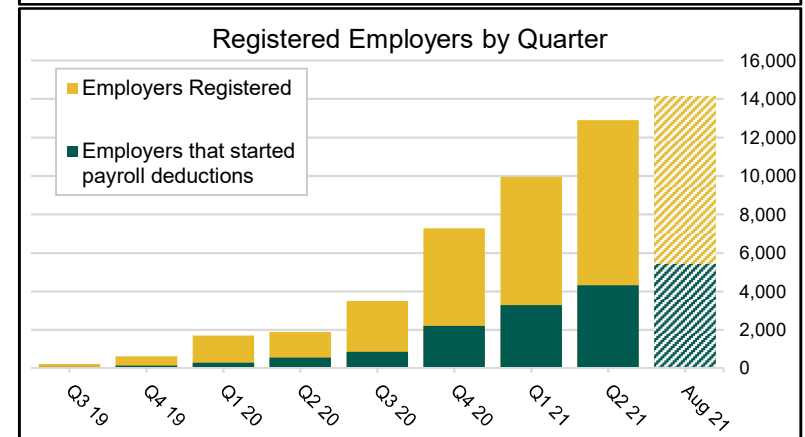
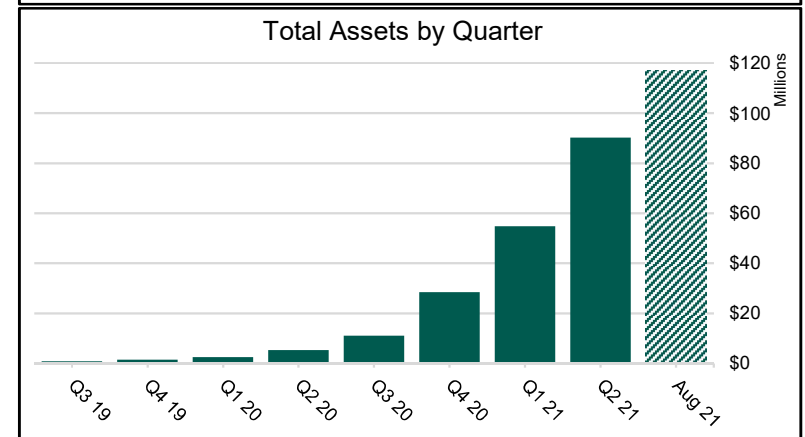
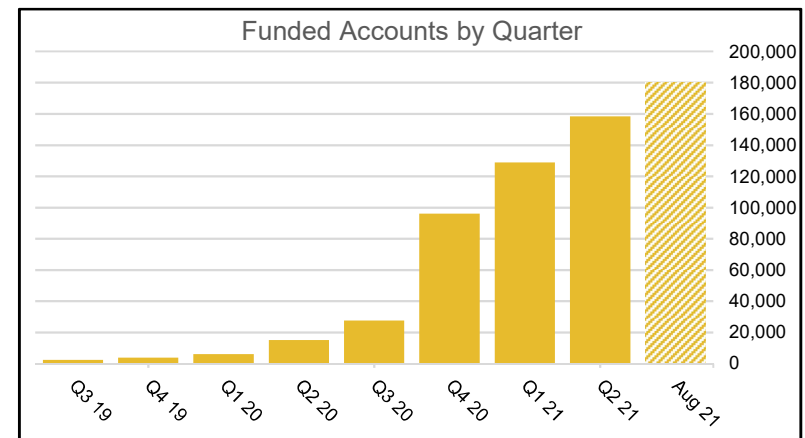
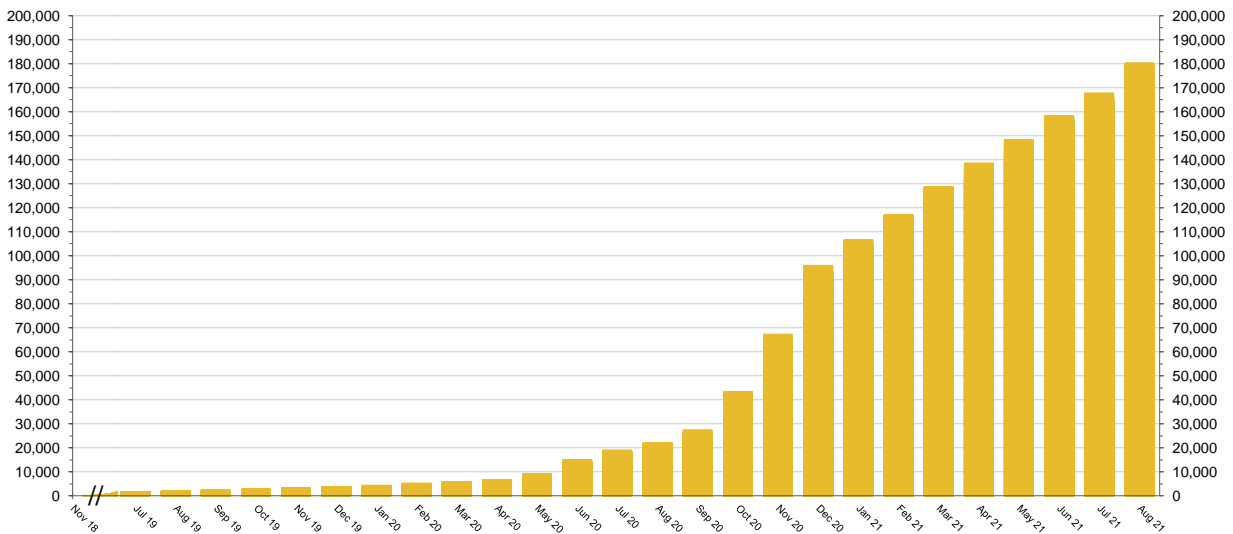
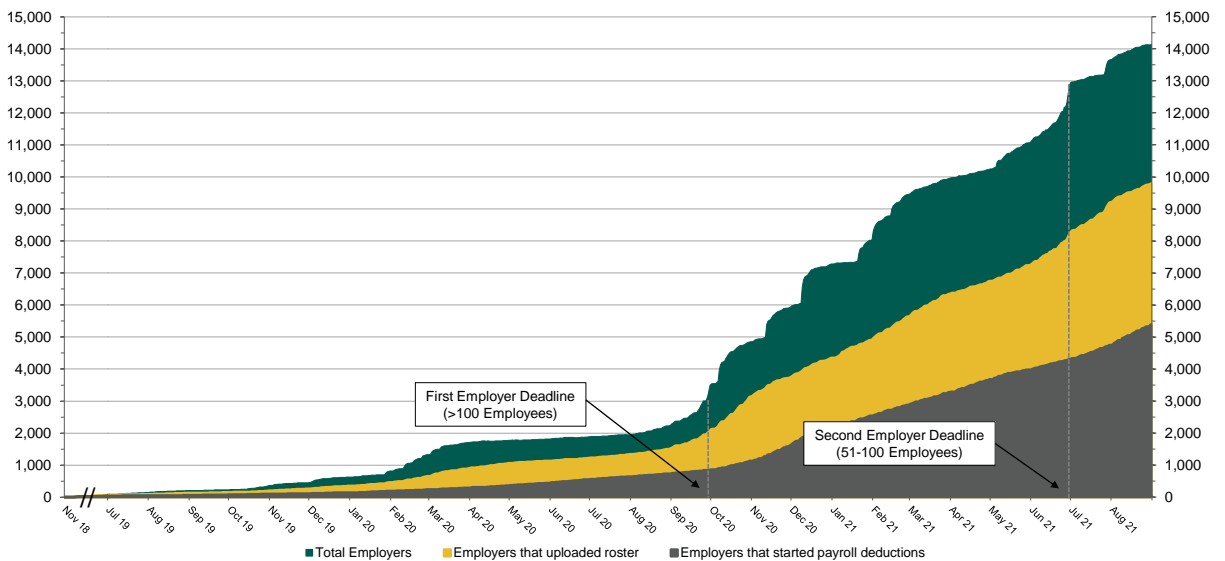


Chart 1: Funded Accounts
As of 8/31/21



The Program operated a limited scope pilot from November 2018 through June 2019 prior to full statewide launch on July 1, 2019.

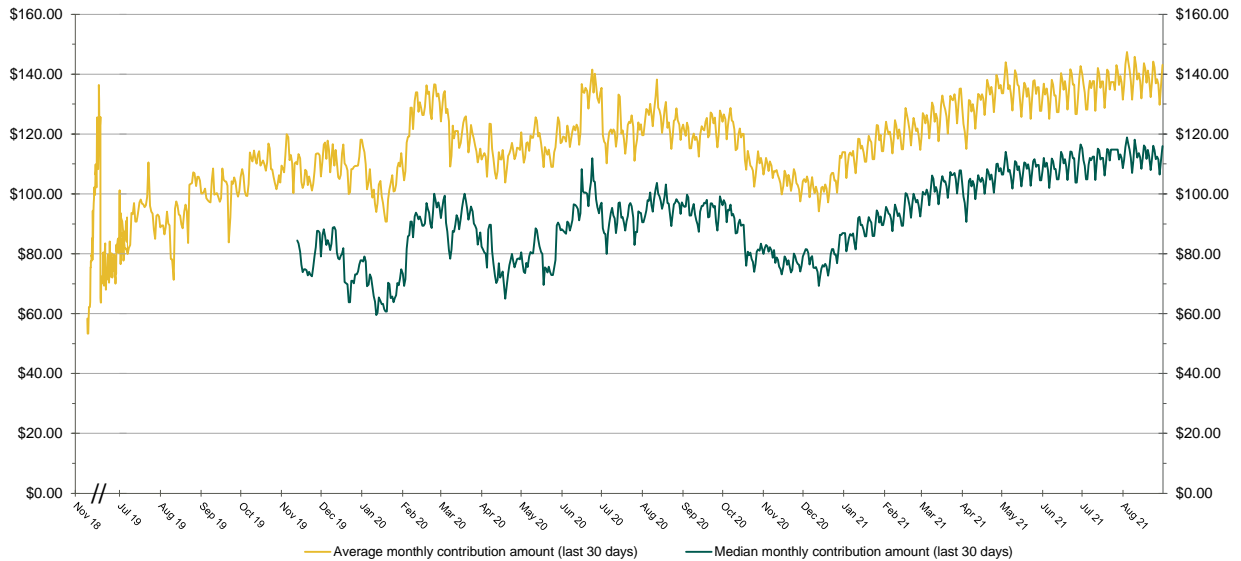
Chart 2: Status of All Registered Employers
As of 8/31/21



The Program operated a limited scope pilot from November 2018 through June 2019 prior to full statewide launch on July 1, 2019.

Chart 3: Monthly Contributions Per Saver

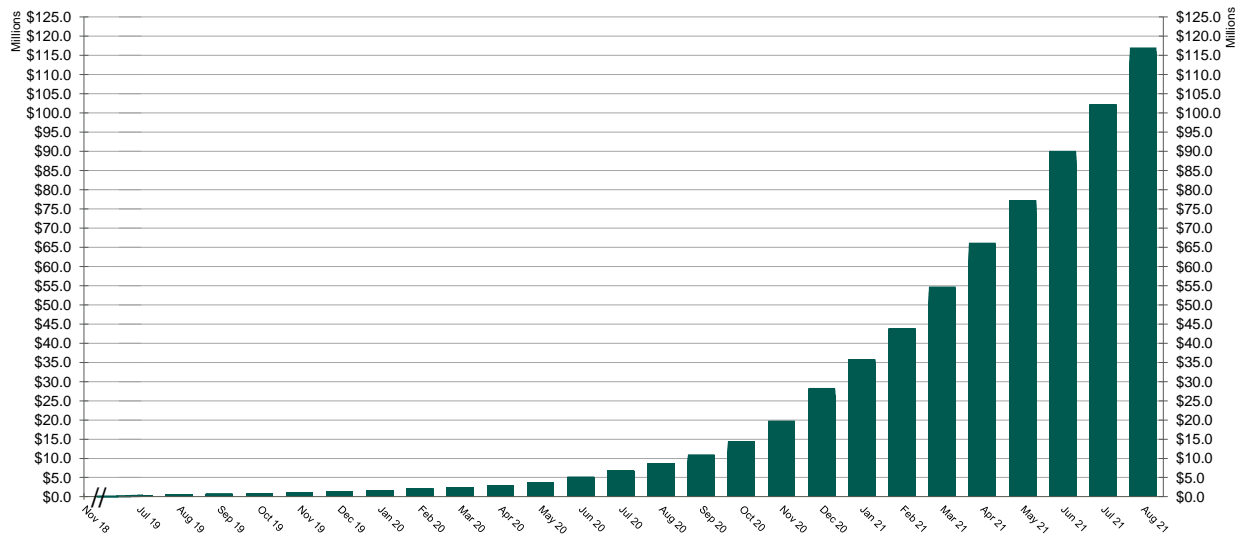
As of 8/31/21



The Program operated a limited scope pilot from November 2018 through June 2019 prior to full statewide launch on July 1, 2019.

Chart 4: Total Assets

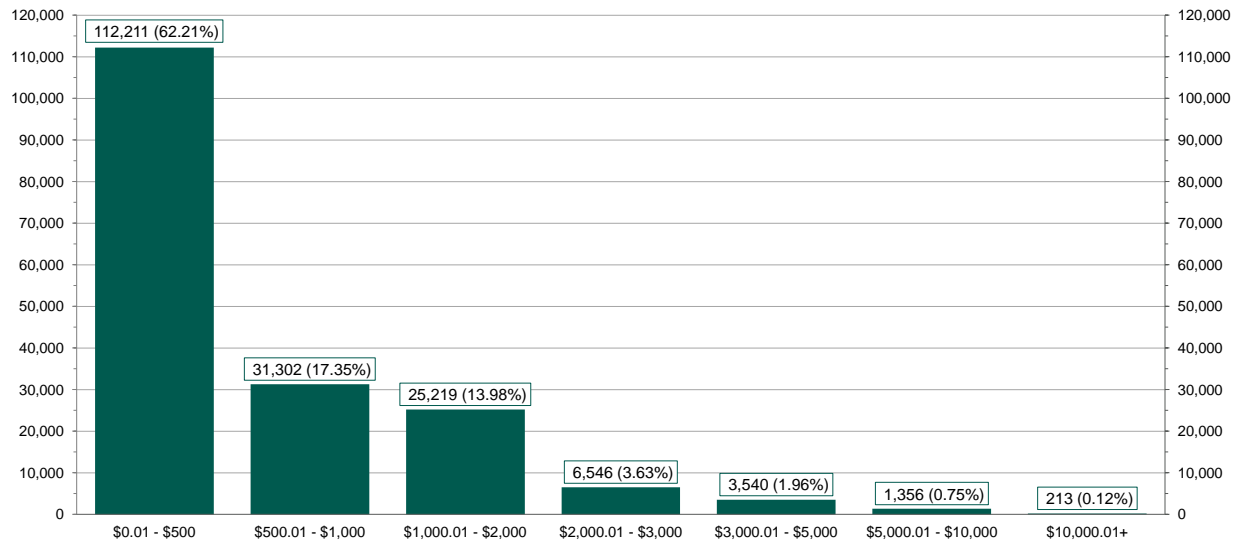
As of 8/31/21



The Program operated a limited scope pilot from November 2018 through June 2019 prior to full statewide launch on July 1, 2019.

Chart 5: Distribution of Accounts by Balance

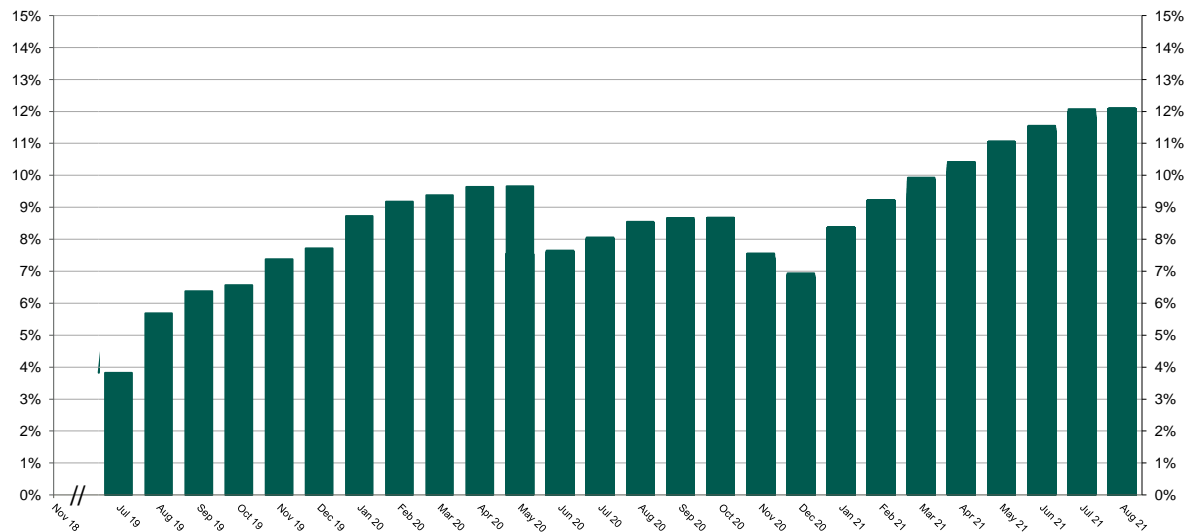
As of 8/31/21



The Program operated a limited scope pilot from November 2018 through June 2019 prior to full statewide launch on July 1, 2019.

Chart 6: Accounts w/a Full Withdrawal as % of Payroll Contributing Accounts

As of 8/31/21



The Program operated a limited scope pilot from November 2018 through June 2019 prior to full statewide launch on July 1, 2019.