



CalSavers Retirement Savings Program
Participation & Funding Snapshot as of 4/30/2025

www.treasurer.ca.gov/calsavers/reports/2025

Employer Registration Status Changes

Employer Status	4/30/2025	1/31/2025	Change	% Change
Registered	154,796	147,090	7,706	5.2%
Uploaded Roster	142,783	134,893	7,890	5.8%
Started Payroll Deductions	58,799	56,169	2,630	4.7%
Facilitated Deductions in last 90 days	40,227	39,430	797	2.0%
Exempt	119,129	111,774	7,355	6.6%

Participant Savings and Enrollment Changes

Participant Account Status	4/30/2025	1/31/2025	Change	% Change
Funded Accounts	548,811	539,563	9,248	1.7%
Payroll Contributing Accounts	647,550	624,083	23,467	3.8%
Multiple Employer Accounts*	95,491	92,809	2,682	2.9%
Self-Enrolled Funded Accounts	2,937	2,831	106	3.7%
Effective Opt-Out Rate	35.29%	35.32%	-0.03%	-0.1%

Status of Eligible Employers by Wave

Wave (Deadline)	Employers Registered	Employers Exempted	Total Employers Responded	Total Estimated Eligible Employers	Employer Response Rate
Prior Waves	131,949	90,467	222,416	242,248	91.8%
Wave 2024 (12/31/24)	9,831	10,858	20,689	43,229	47.9%
Wave 4 (12/31/25)	13,016	17,804	30,820	N/A	N/A
Total	154,796	119,129	273,925	285,477	96.0%

* This data point reflects the number of funded account holders associated with more than one registered employer
** Withdrawal Rate is calculated as Accounts with a full withdrawal as a percent of Payroll Contributing Accounts

Funding Amounts and Withdrawals

Funding Amounts	4/30/2025	1/31/2025	Change	% Change
Total Assets	\$1,198,416,588	\$1,158,434,319	\$39,982,269	3.5%
Average Funded Account Balance	\$2,184	\$2,147	\$37	1.7%
Total Contributions Amount	\$1,441,931,357	\$1,329,384,877	\$112,546,480	8.5%
Average Monthly Contribution Amount	\$212	\$203	\$9	4.4%
Median Monthly Contribution Amount	\$157	\$150	\$7	4.7%
Average Contribution Rate	5.24%	5.25%	-0.01%	-0.2%
Amount of Withdrawals	\$382,642,645	\$334,948,479	\$47,694,166	14.2%
Accounts with a Full Withdrawal	154,543	143,736	10,807	7.5%
Accounts with a Partial Withdrawal	27,686	25,271	2,415	9.6%
Withdrawal Rate**	23.87%	23.03%	0.84%	3.6%

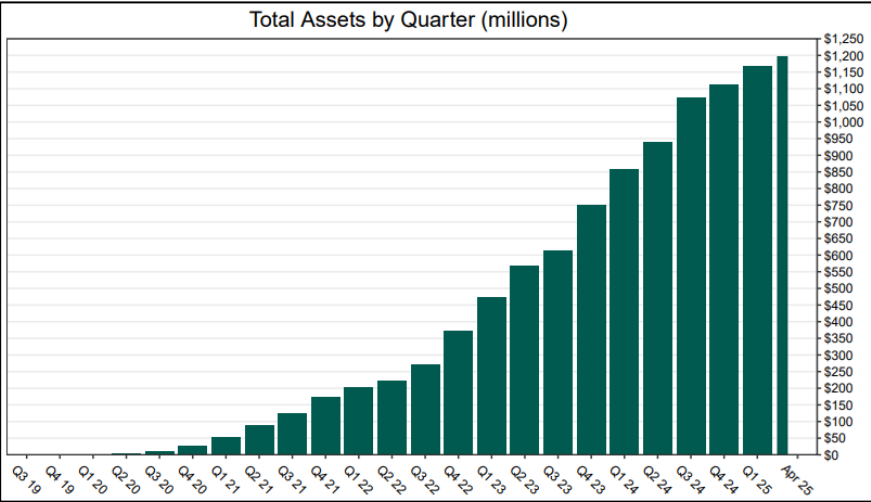
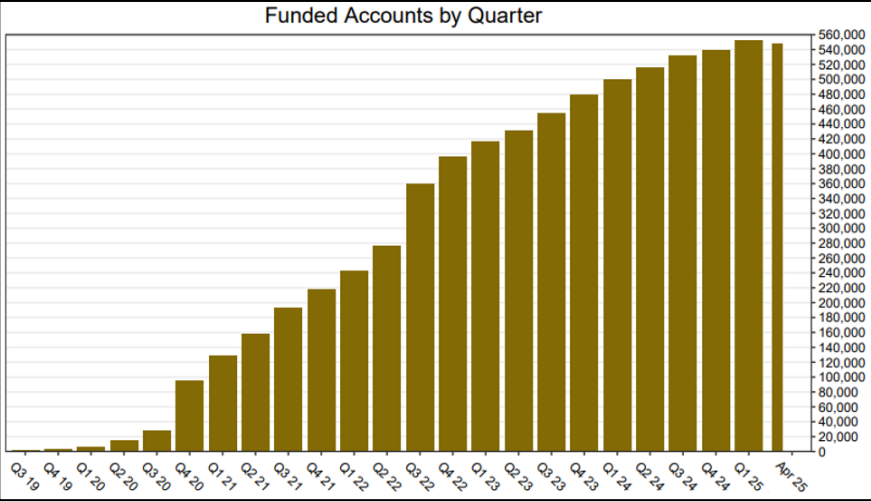
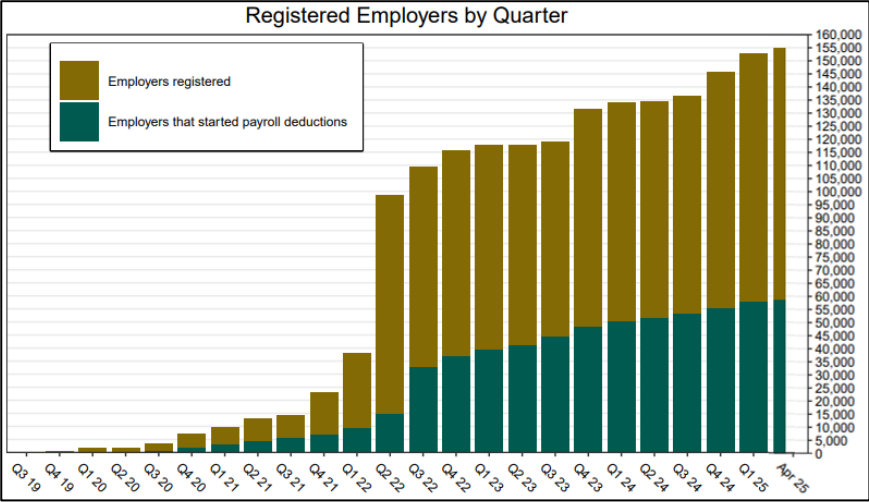
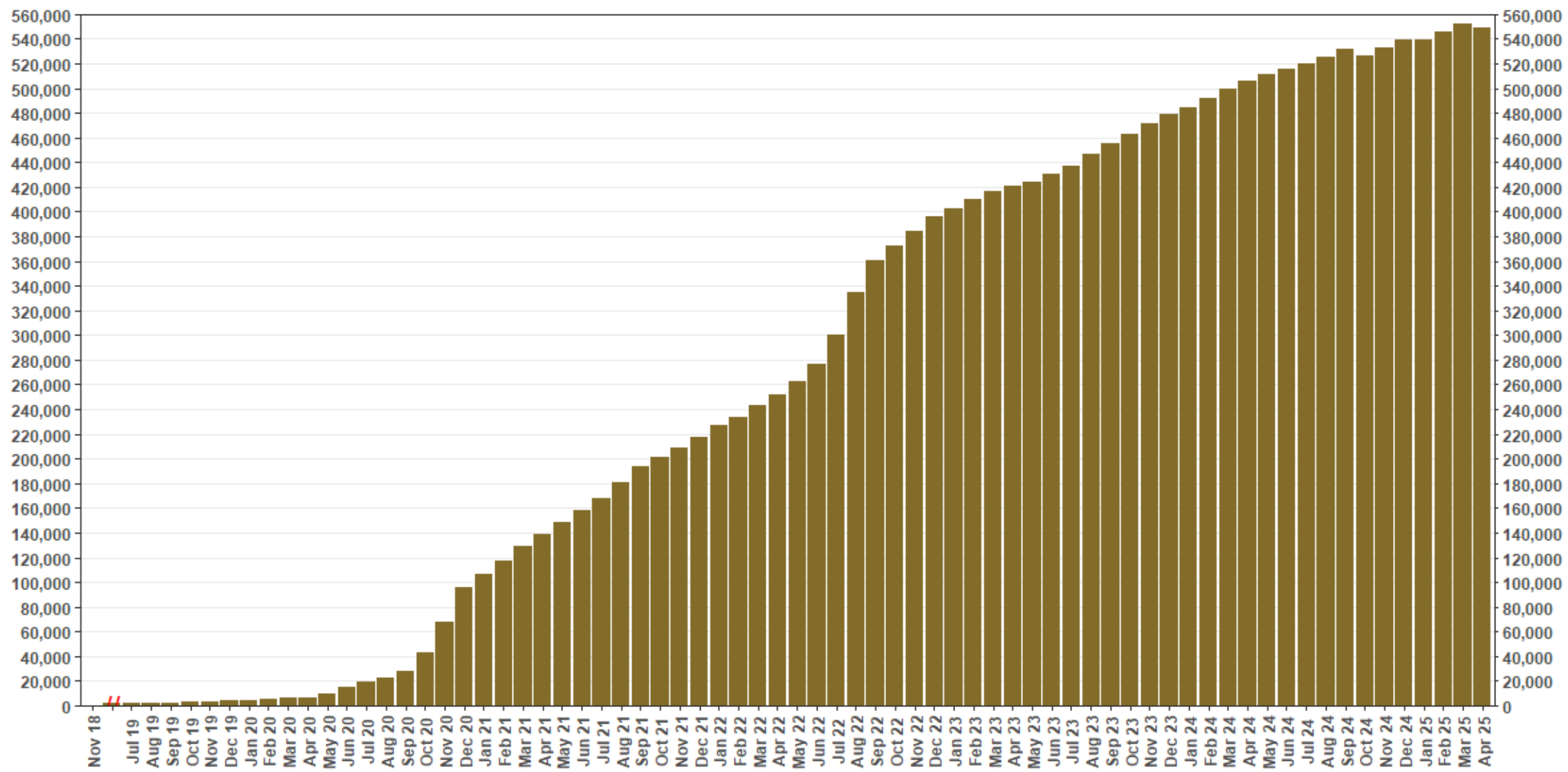


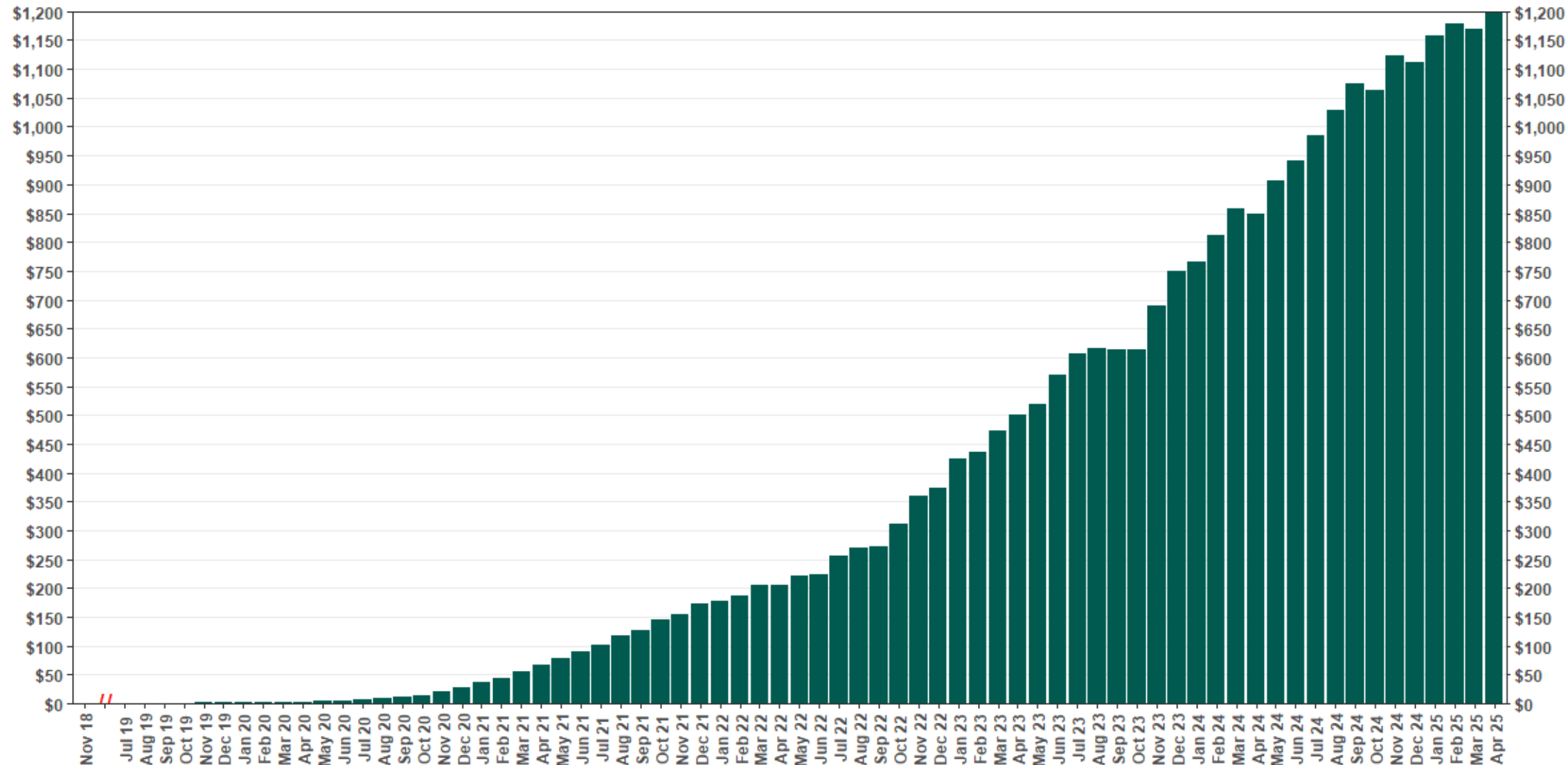
Chart 1: Funded Accounts

As of 4/30/25



The Program operated a limited scope pilot from November 2018 through June 2019 prior to full statewide launch on July 1, 2019.

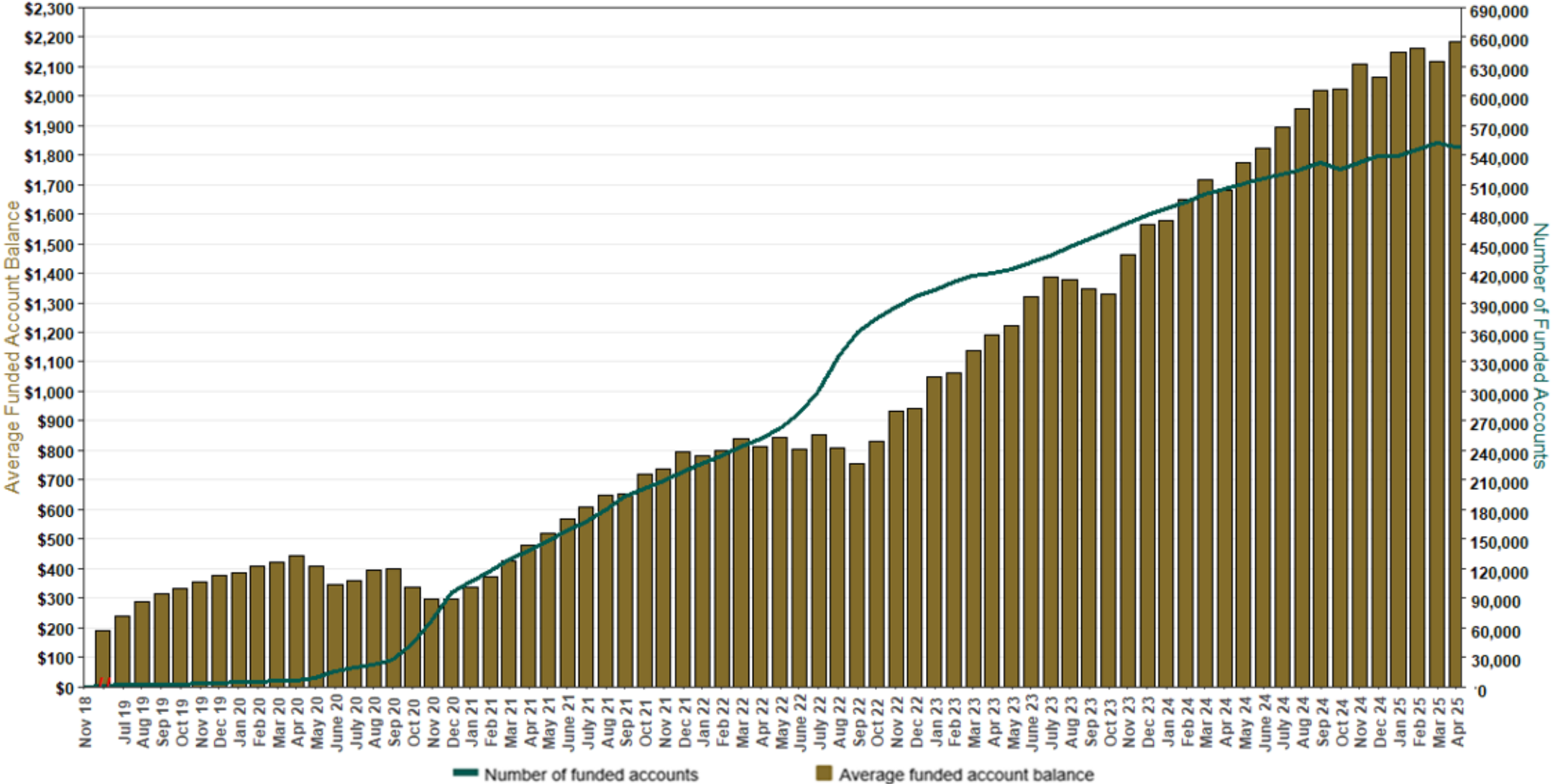
Chart 2: Total Assets (millions)
As of 4/30/25



The Program operated a limited scope pilot from November 2018 through June 2019 prior to full statewide launch on July 1, 2019.

Chart 3: Average Funded Account Balance

As of 4/30/25



The Program operated a limited scope pilot from November 2018 through June 2019 prior to full statewide launch on July 1, 2019.

Chart 4: Distribution of Accounts by Balance
As of 4/30/25

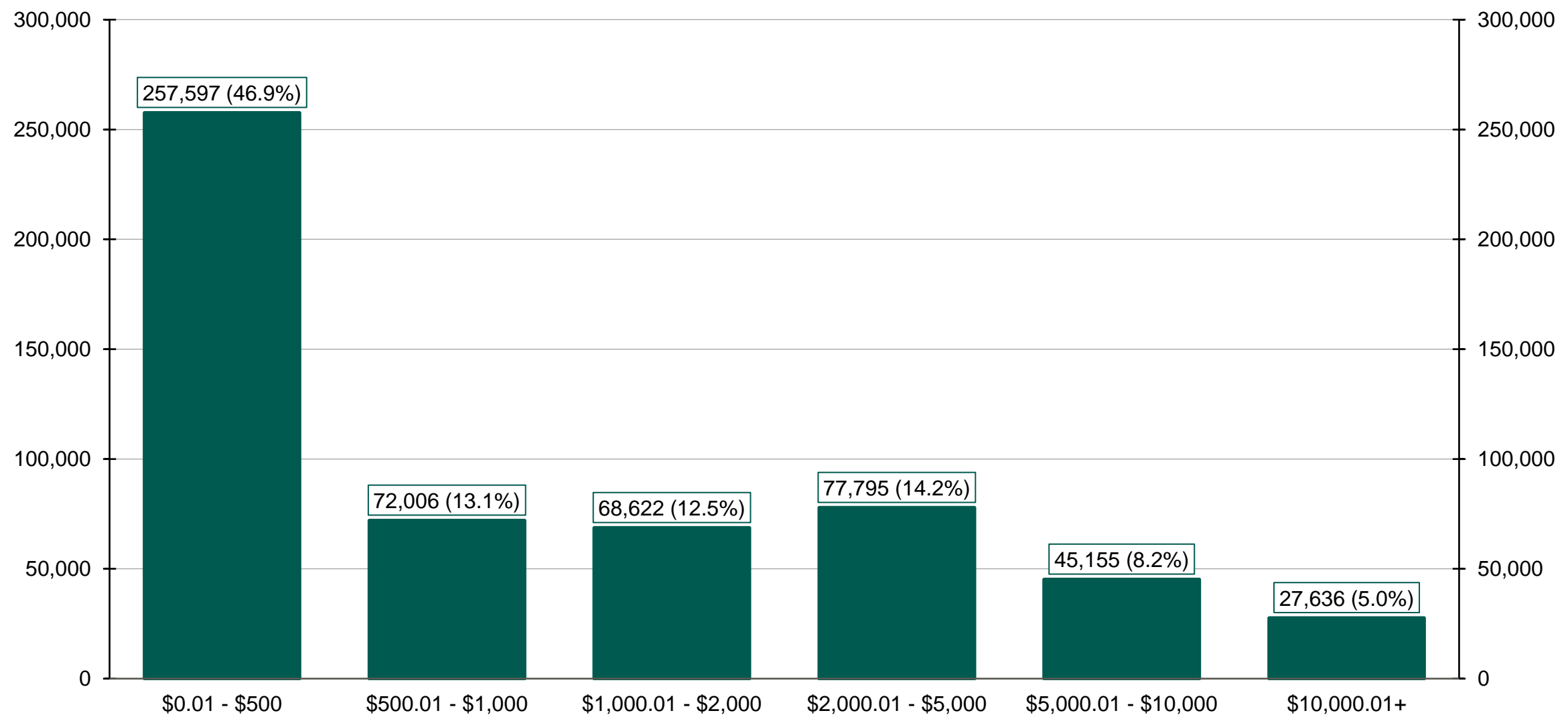
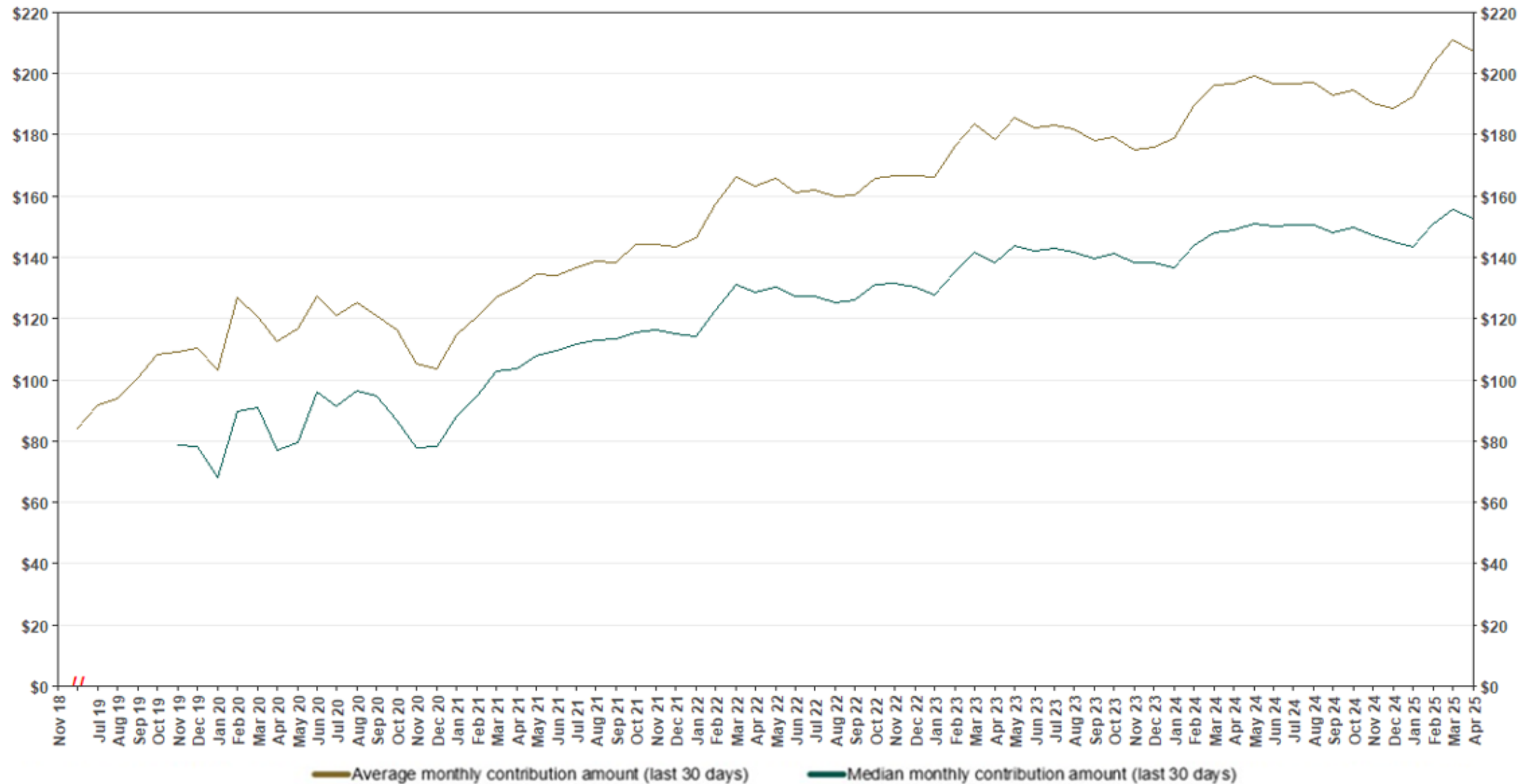
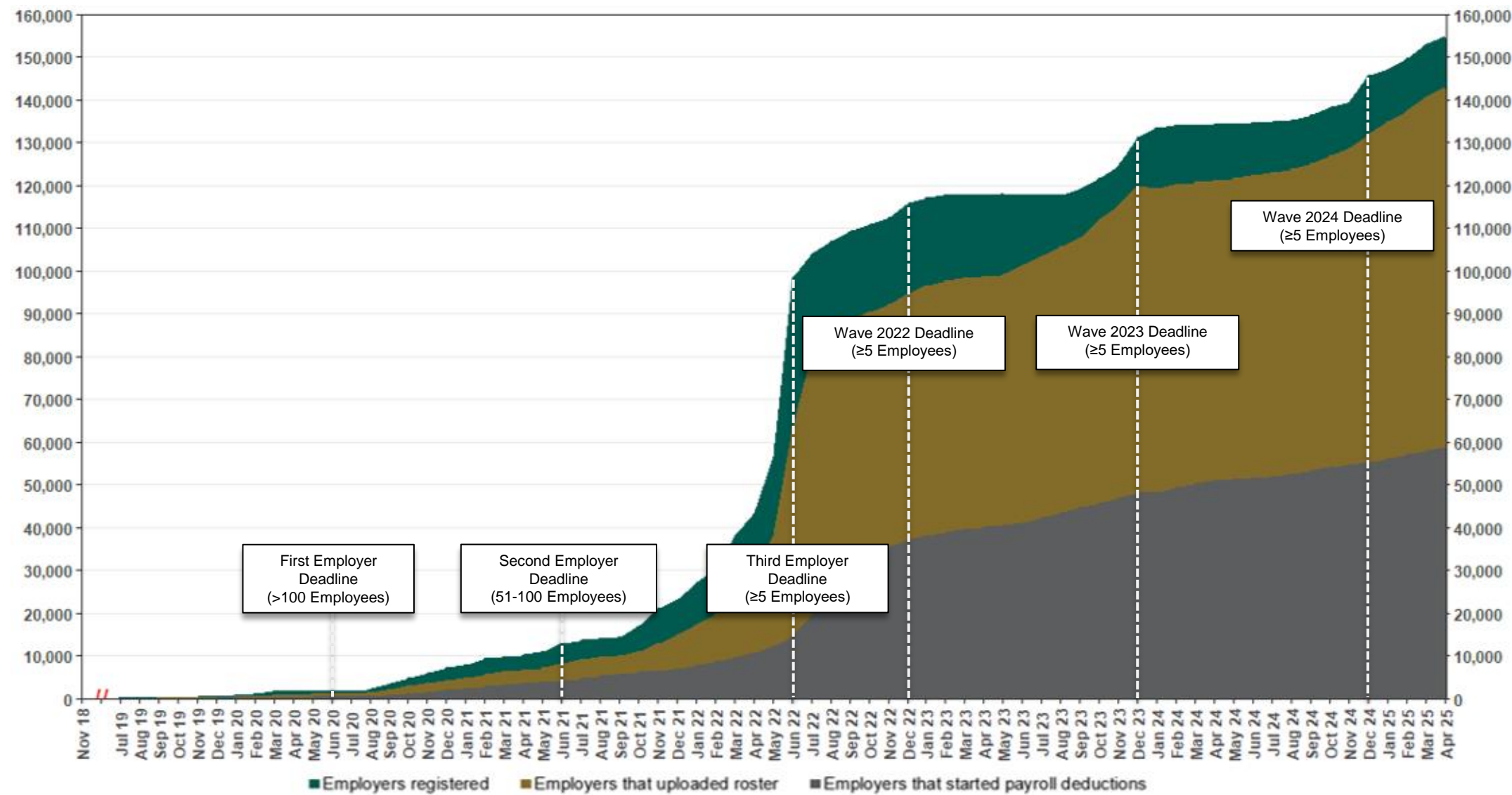


Chart 5: Monthly Contributions Per Saver
As of 4/30/25



The Program operated a limited scope pilot from November 2018 through June 2019 prior to full statewide launch on July 1, 2019.

Chart 6: Status of All Registered Employers
As of 4/30/25



The Program operated a limited scope pilot from November 2018 through June 2019 prior to full statewide launch on July 1, 2019.

Chart 7: Status of Post-Deadline Employers

As of 4/30/25

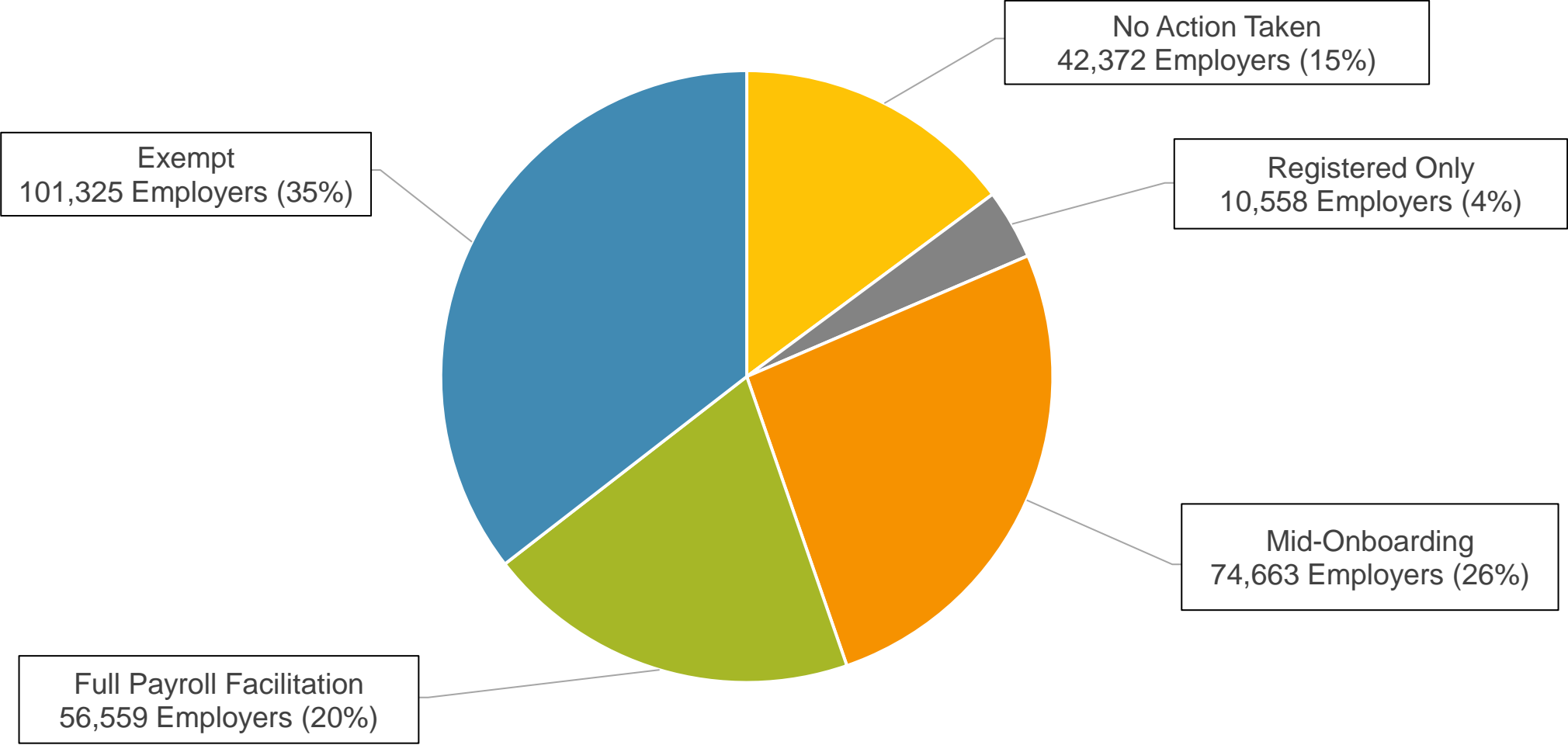
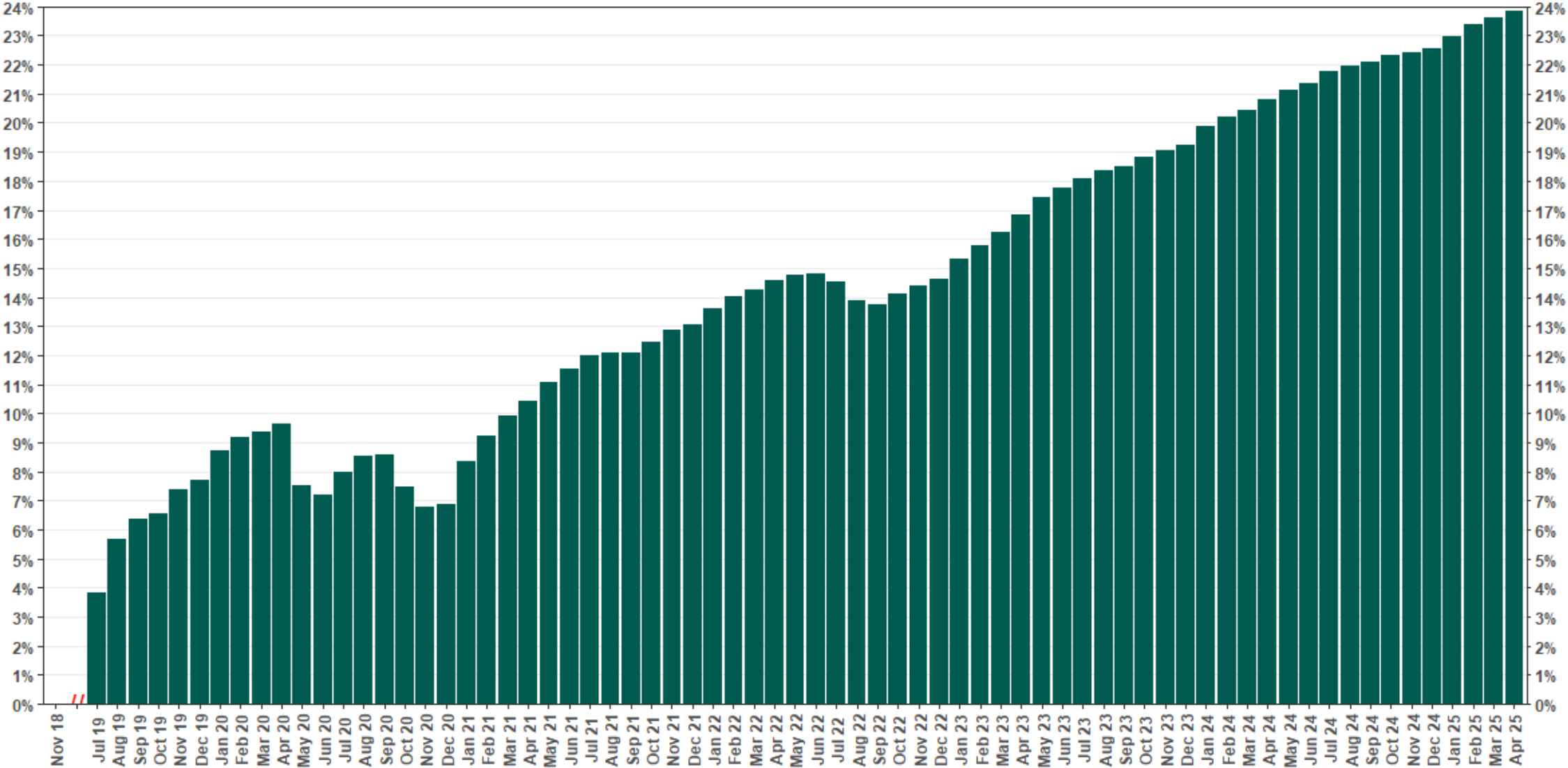


Chart 8: Accounts w/ Full Withdrawal as % of Payroll Contributing Accounts
As of 4/30/25



The Program operated a limited scope pilot from November 2018 through June 2019 prior to full statewide launch on July 1, 2019.