



CalSavers Retirement Savings Program
Participation & Funding Snapshot as of 8/31/2025

Employer Registration Status Changes

Employer Status	8/31/2025	5/31/2025	Change	% Change
Registered	163,107	157,186	5,921	3.8%
Uploaded Roster	150,735	145,024	5,711	3.9%
Started Payroll Deductions	60,931	59,395	1,536	2.6%
Facilitated Deductions in last 90 days	40,357	40,402	-45	-0.1%
Exempt	126,701	121,343	5,358	4.4%

Status of Eligible Employers by Wave

Wave (Deadline)	Employers Registered	Employers Exempted	Total Employers Responded	Employers Sent Payroll	Total Estimated Eligible Employers	Employer Response Rate
Prior Waves	141,298	102,141	243,439	56,990	285,510	85.3%
Wave 4 (12/31/25)	21,809	24,560	46,369	3,941	544,431	8.5%
Total	163,107	126,701	289,808	60,931	829,941	34.9%

* This data point reflects the number of funded account holders associated with more than one registered employer

** Withdrawal Rate is calculated as Accounts with a full withdrawal as a percent of Payroll Contributing Accounts

Participant Savings and Enrollment Changes

Participant Account Status	8/31/2025	5/31/2025	Change	% Change
Funded Accounts	572,989	555,299	17,690	3.2%
Payroll Contributing Accounts	677,223	654,373	22,850	3.5%
Multiple Employer Accounts*	102,077	97,334	4,743	4.9%
Self-Enrolled Funded Accounts	3,076	2,975	101	3.4%
Effective Opt-Out Rate	34.82%	35.25%	-0.43%	-1.2%

Funding Amounts and Withdrawals

Funding Amounts	8/31/2025	5/31/2025	Change	% Change
Total Assets	\$1,426,600,592	\$1,270,574,194	\$156,026,398	12.3%
Average Funded Account Balance	\$2,490	\$2,288	\$202	8.8%
Median Funded Account Balance	\$645	\$613	\$32	5.2%
Total Contributions Amount	\$1,594,732,625	\$1,480,577,201	\$114,155,424	7.7%
Average Monthly Contribution Amount	\$194	\$206	-\$12	-5.8%
Median Monthly Contribution Amount	\$148	\$154	-\$6	-3.9%
Average Contribution Rate	5.23%	5.24%	-0.01%	-0.2%
Amount of Withdrawals	\$446,947,155	\$397,963,646	\$48,983,509	12.3%
Accounts with a Full Withdrawal	166,523	157,558	8,965	5.7%
Accounts with a Partial Withdrawal	30,976	28,478	2,498	8.8%
Withdrawal Rate**	24.59%	24.08%	0.51%	2.1%

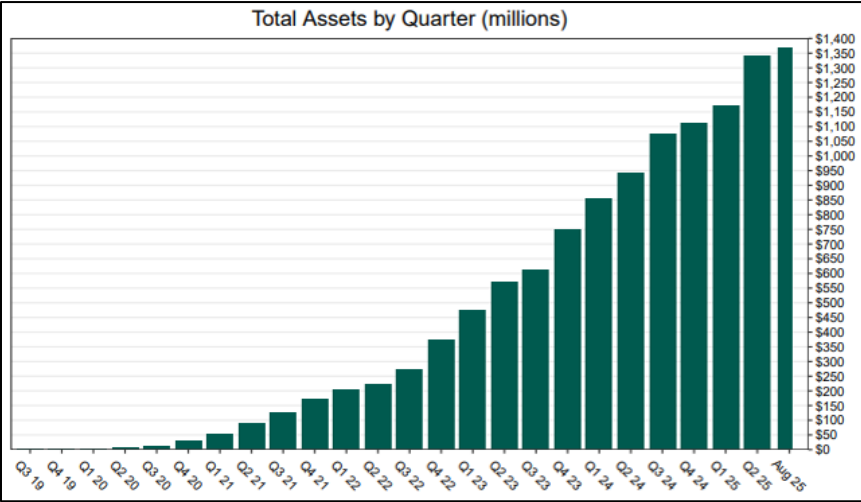
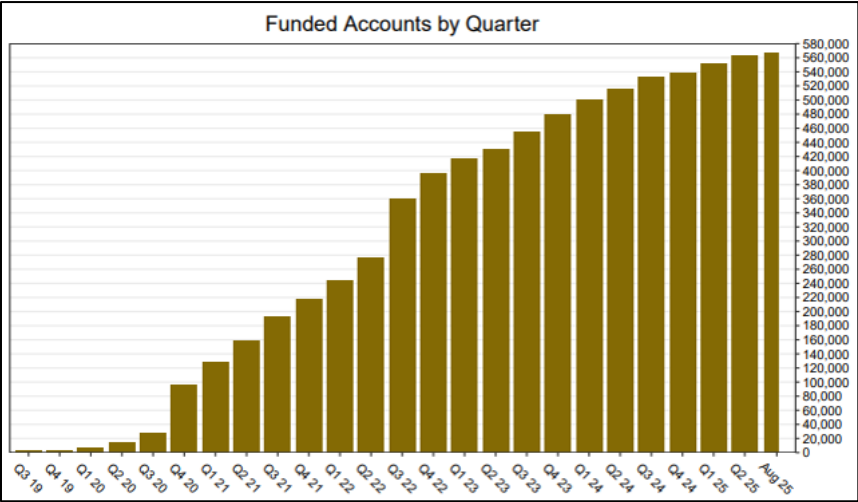
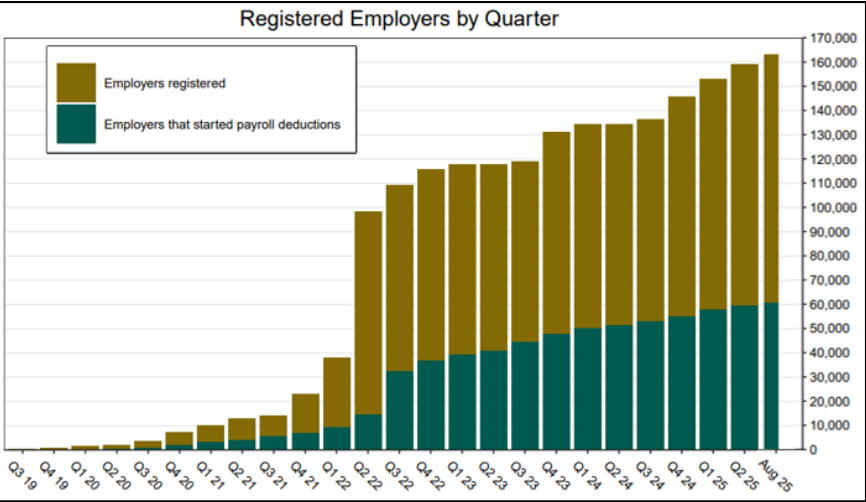
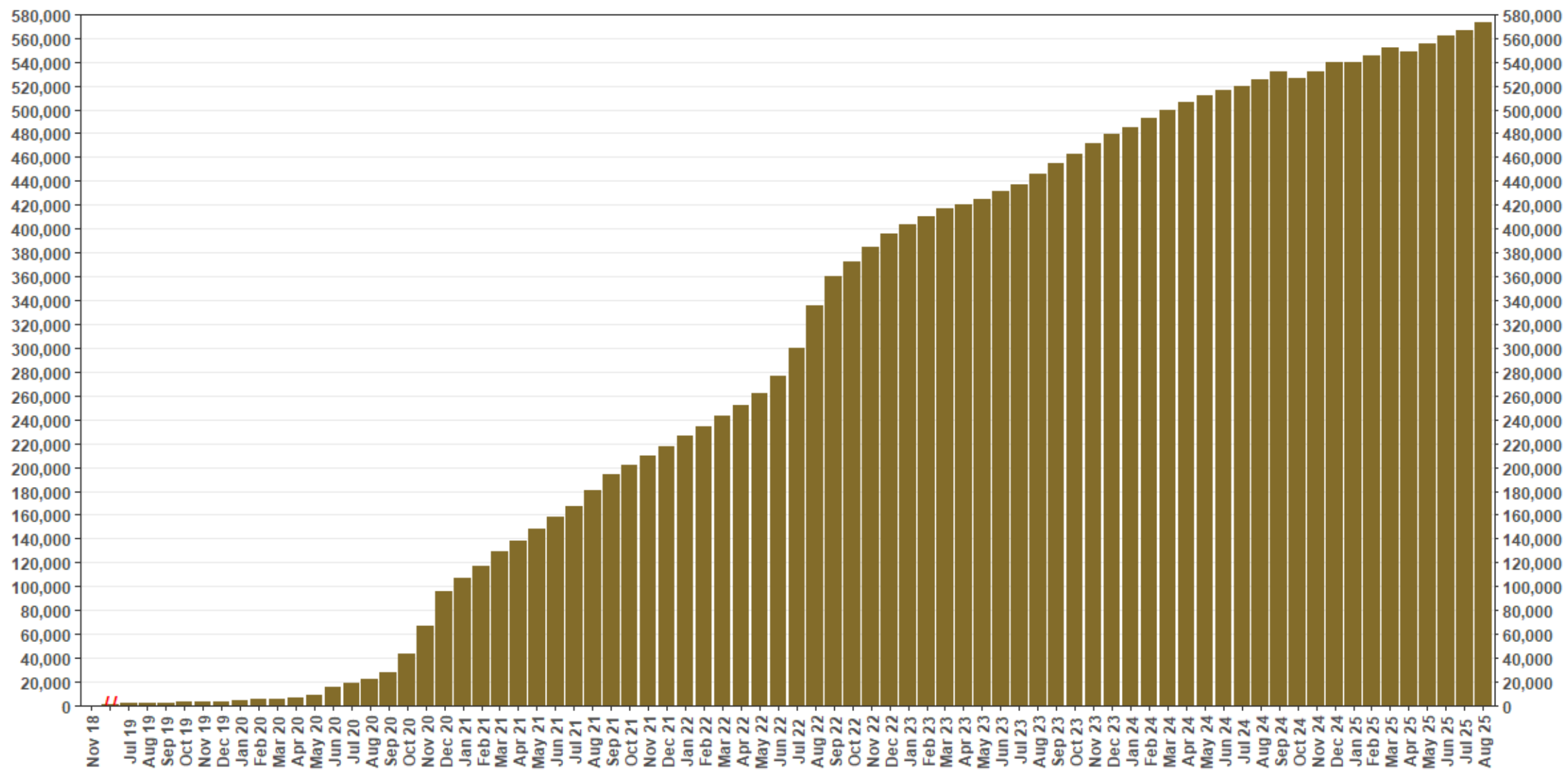


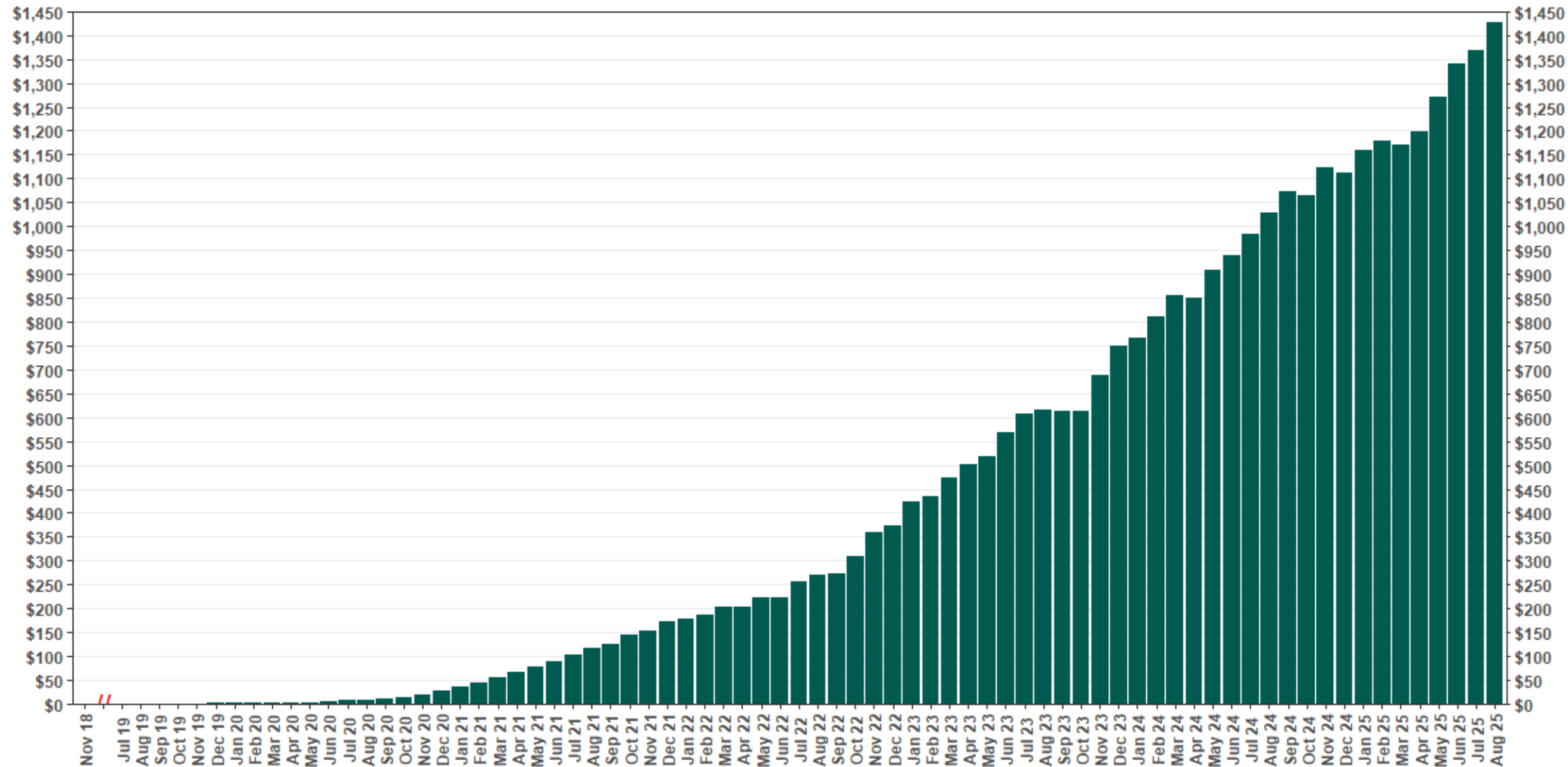
Chart 1: Funded Accounts

As of 8/31/25



The Program operated a limited scope pilot from November 2018 through June 2019 prior to full statewide launch on July 1, 2019.

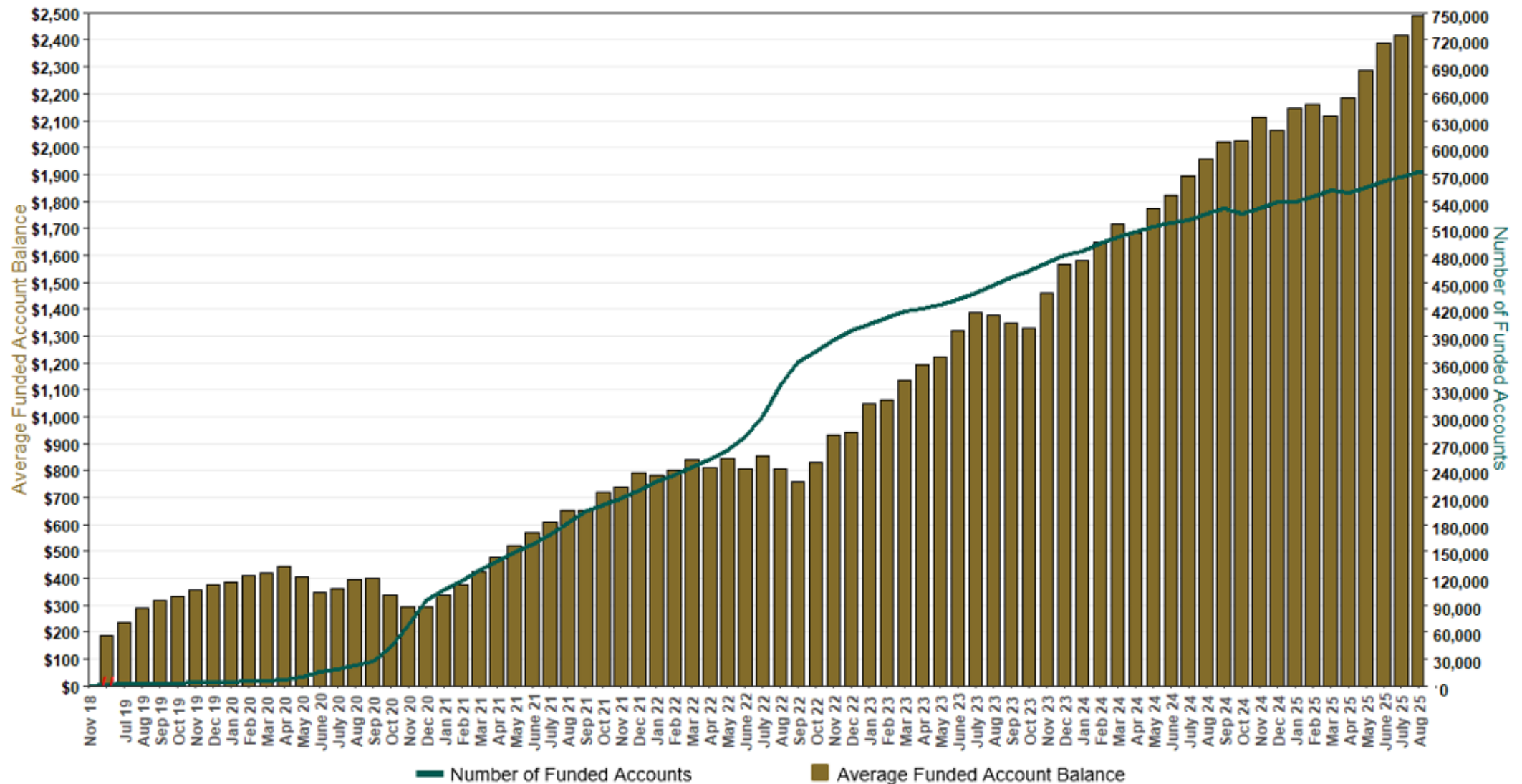
Chart 2: Total Assets (millions)
As of 8/31/25



The Program operated a limited scope pilot from November 2018 through June 2019 prior to full statewide launch on July 1, 2019.

Chart 3: Average Funded Account Balance

As of 8/31/25



The Program operated a limited scope pilot from November 2018 through June 2019 prior to full statewide launch on July 1, 2019.

Chart 4: Distribution of Accounts by Balance
As of 8/31/25

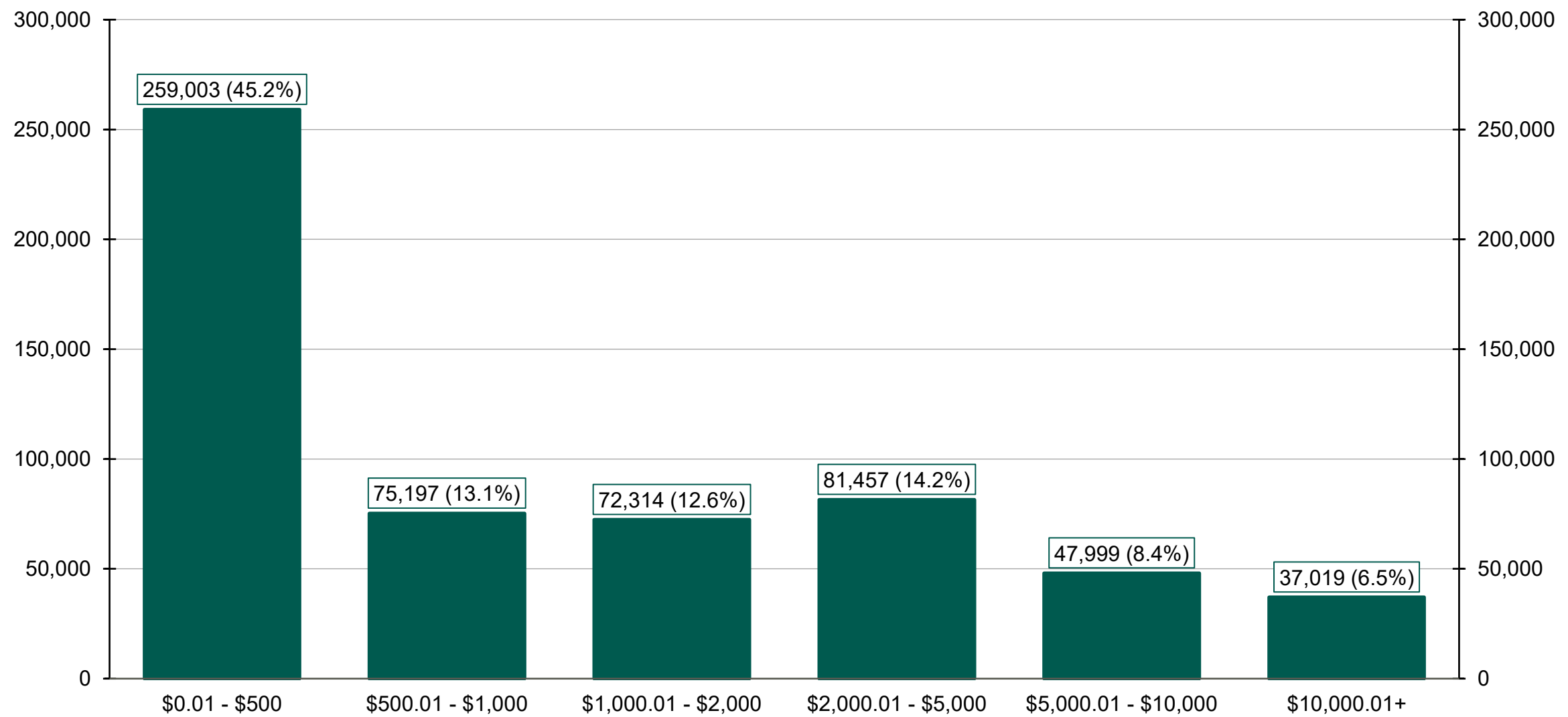
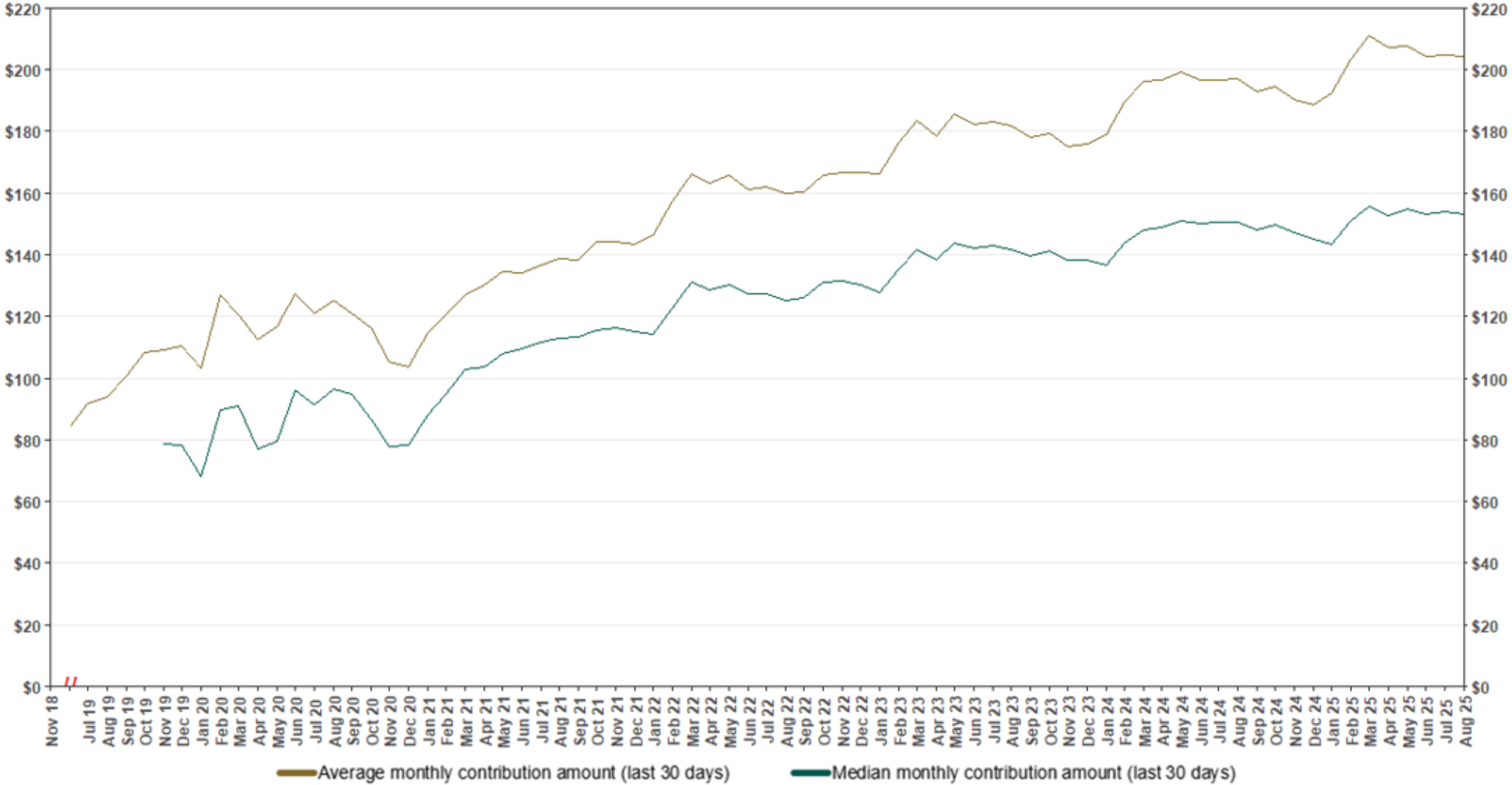
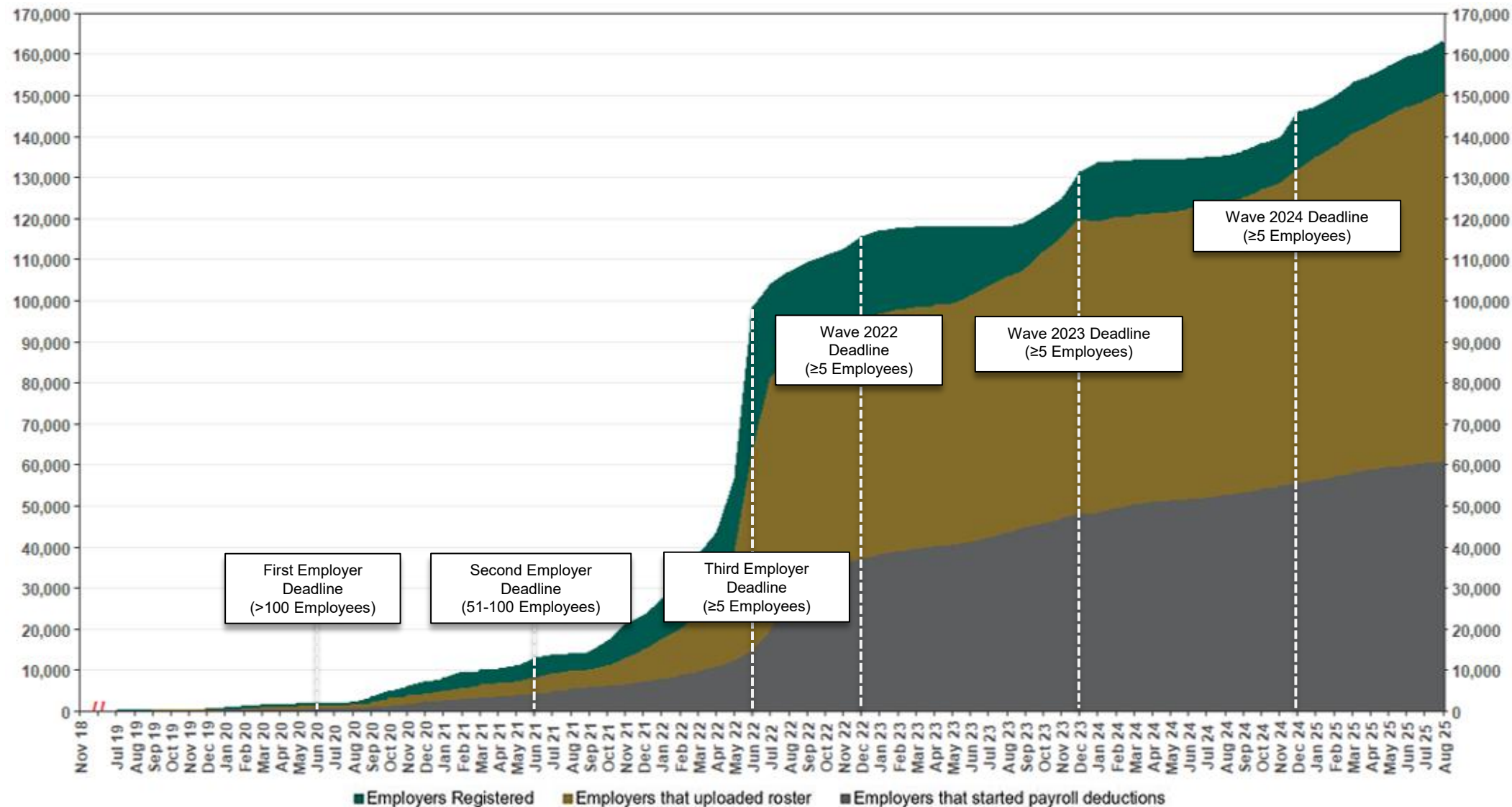


Chart 5: Monthly Contributions Per Saver
As of 8/31/25



The Program operated a limited scope pilot from November 2018 through June 2019 prior to full statewide launch on July 1, 2019.

Chart 6: Status of All Registered Employers
As of 8/31/25



The Program operated a limited scope pilot from November 2018 through June 2019 prior to full statewide launch on July 1, 2019.

Chart 7: Status of Post-Deadline Employers

As of 8/31/25

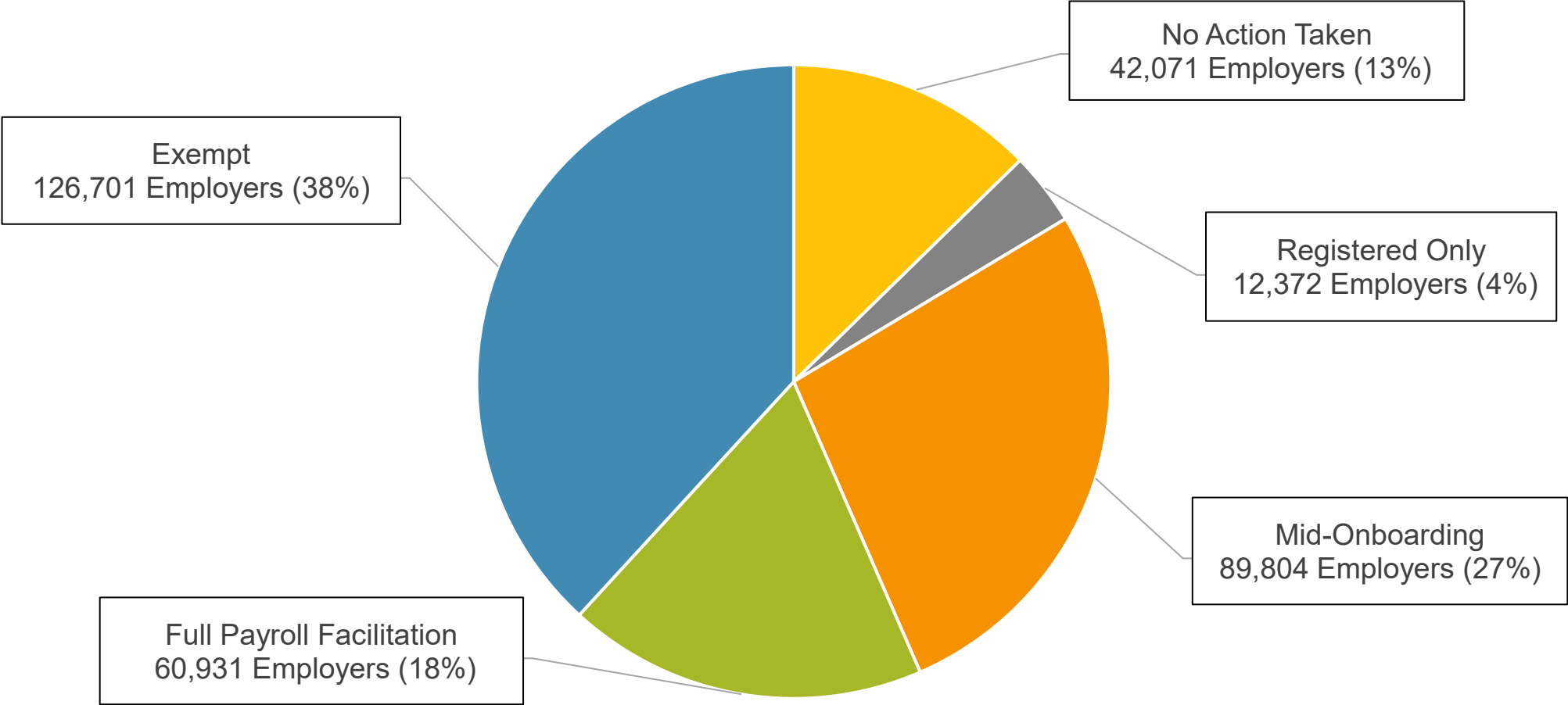
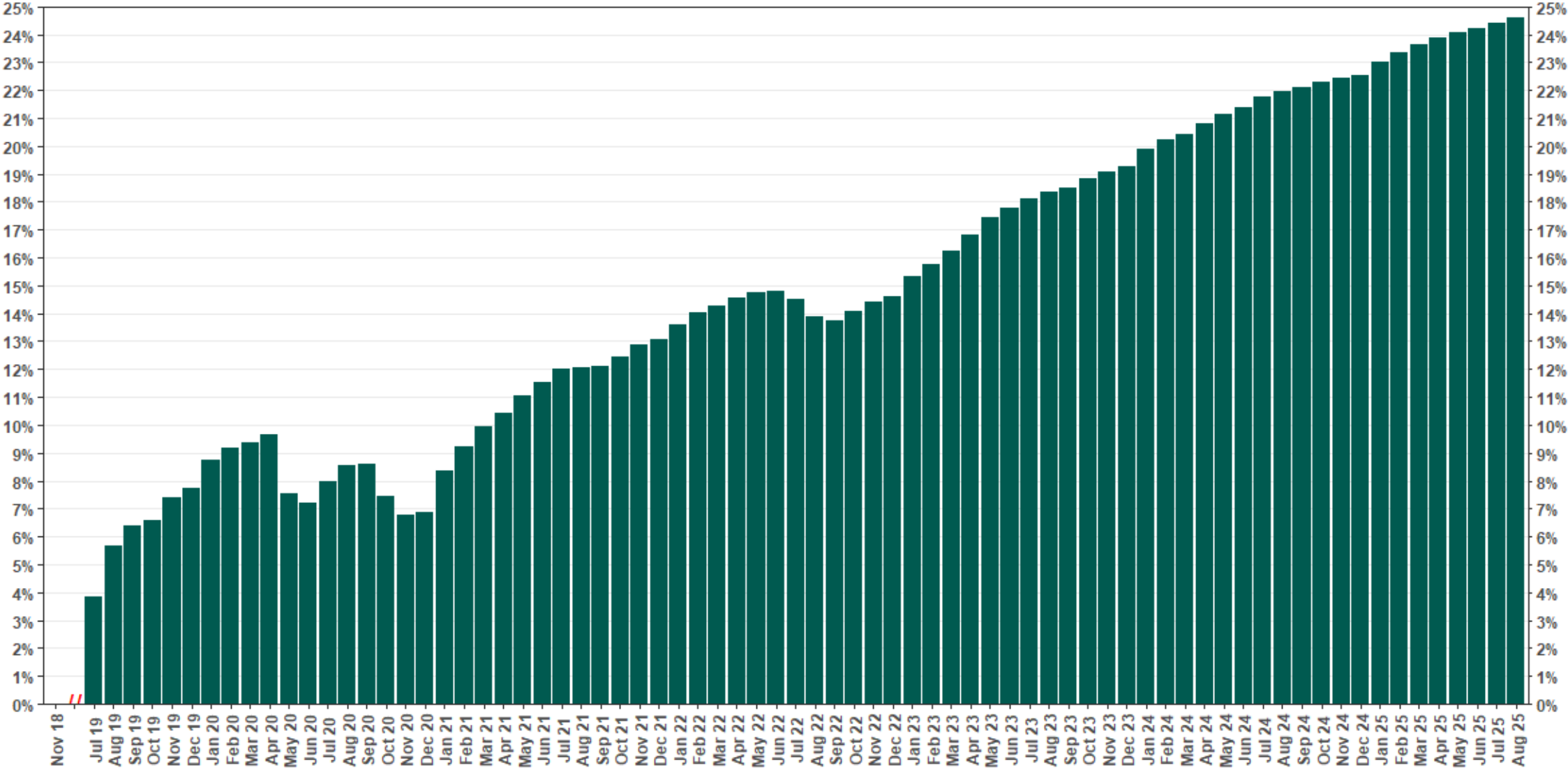


Chart 8: Accounts w/ Full Withdrawal as % of Payroll Contributing Accounts

As of 8/31/25



The Program operated a limited scope pilot from November 2018 through June 2019 prior to full statewide launch on July 1, 2019.