



CalSavers Retirement Savings Program
Participation & Funding Snapshot as of 2/28/2025

Employer Registration Status Changes

Employer Status	2/28/2025	11/30/2024	Change	% Change
Registered	149,650	139,484	10,166	7.3%
Uploaded Roster	137,491	128,529	8,962	7.0%
Started Payroll Deductions	57,071	54,732	2,339	4.3%
Facilitated Deductions in last 90 days	39,893	38,876	1,017	2.6%
Exempt	114,089	104,107	9,982	9.6%

Participant Savings and Enrollment Changes

Participant Account Status	2/28/2025	11/30/2024	Change	% Change
Funded Accounts	545,764	532,346	13,418	2.5%
Payroll Contributing Accounts	632,256	609,604	22,652	3.7%
Multiple Employer Accounts*	94,351	89,848	4,503	5.0%
Self-Enrolled Funded Accounts	2,898	2,775	123	4.4%
Effective Opt-Out Rate	35.43%	35.67%	-0.24%	-0.7%

Status of Eligible Employers by Wave

Wave (Deadline)	Employers Registered	Employers Exempted	Total Employers Responded	Total Estimated Eligible Employers	Employer Response Rate
Prior Waves	132,038	90,058	222,096	242,219	91.7%
Wave 2024 (12/31/24)	9,786	10,683	20,469	43,229	47.4%
Wave 4 (12/31/25)	7,826	13,348	21,174	N/A	N/A
Total	149,650	114,089	263,739	285,448	92.4%

* This data point reflects the number of funded account holders associated with more than one registered employer

** Withdrawal Rate is calculated as Accounts with a full withdrawal as a percent of Payroll Contributing Accounts

Funding Amounts and Withdrawals

Funding Amounts	2/28/2025	11/30/2024	Change	% Change
Total Assets	\$1,179,428,365	\$1,123,260,733	\$56,167,632	5.0%
Average Funded Account Balance	\$2,161	\$2,110	\$51	2.4%
Total Contributions Amount	\$1,365,183,213	\$1,257,251,535	\$107,931,678	8.6%
Average Monthly Contribution Amount	\$217	\$188	\$29	15.4%
Median Monthly Contribution Amount	\$160	\$146	\$14	9.6%
Average Contribution Rate	5.25%	5.18%	0.07%	1.4%
Amount of Withdrawals	\$351,271,302	\$304,572,544	\$46,698,758	15.3%
Accounts with a Full Withdrawal	147,757	136,757	11,000	8.0%
Accounts with a Partial Withdrawal	26,103	23,612	2,491	10.5%
Withdrawal Rate**	23.37%	22.43%	0.94%	4.2%

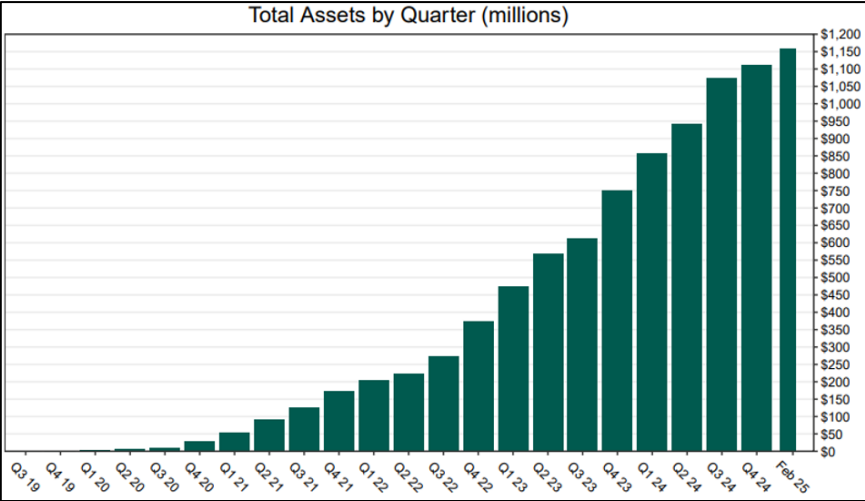
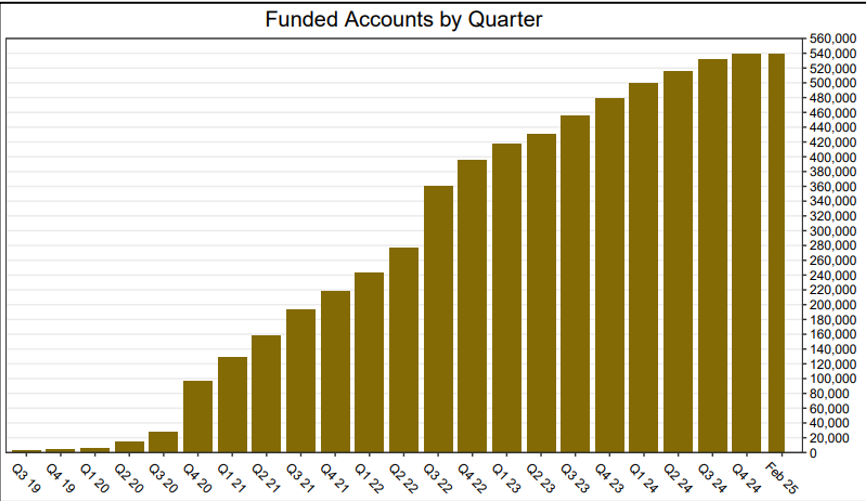
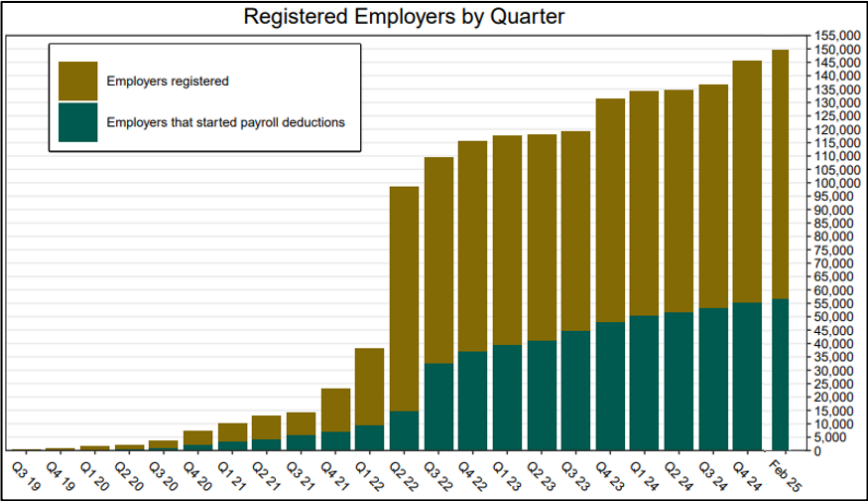
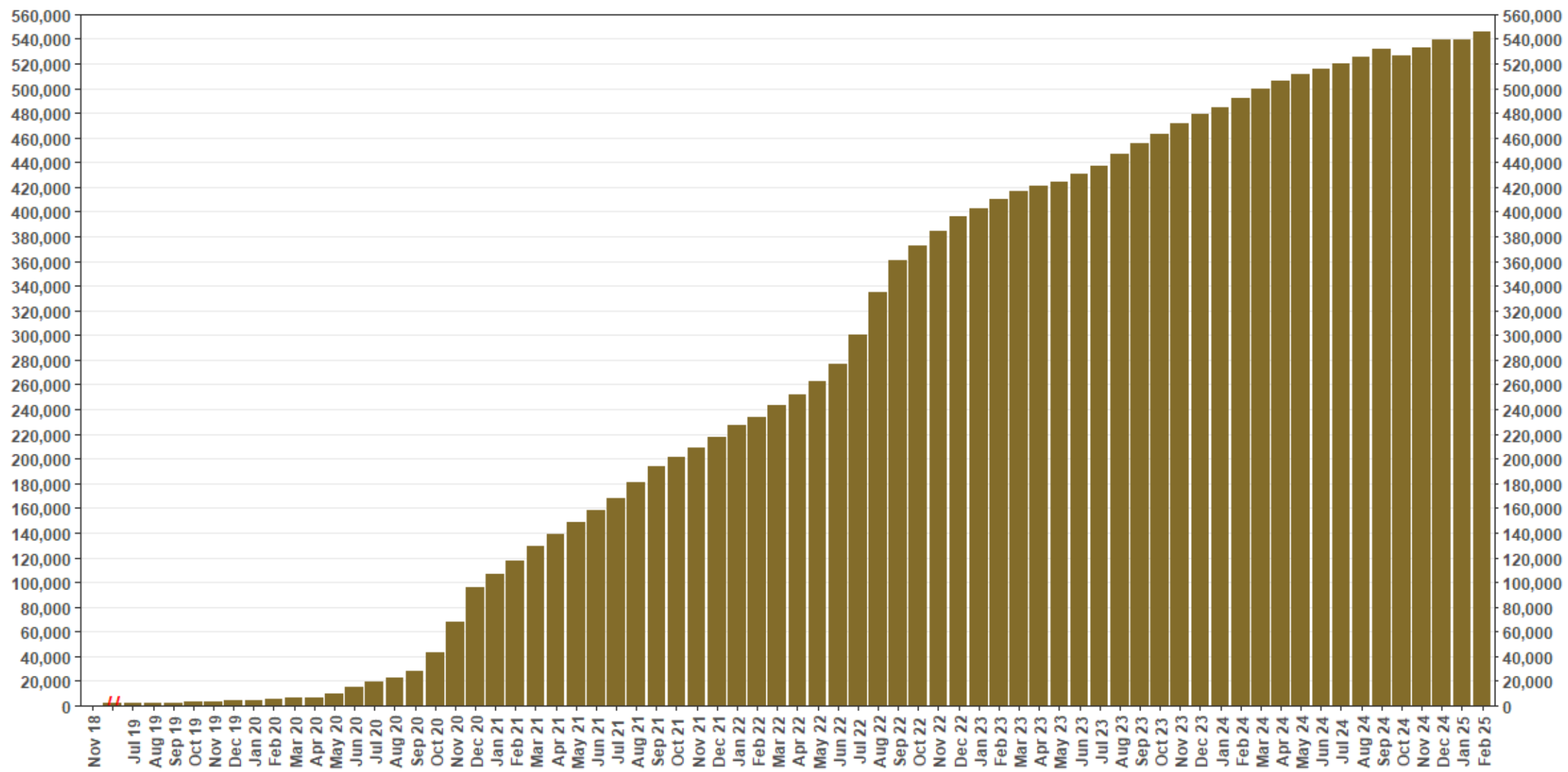


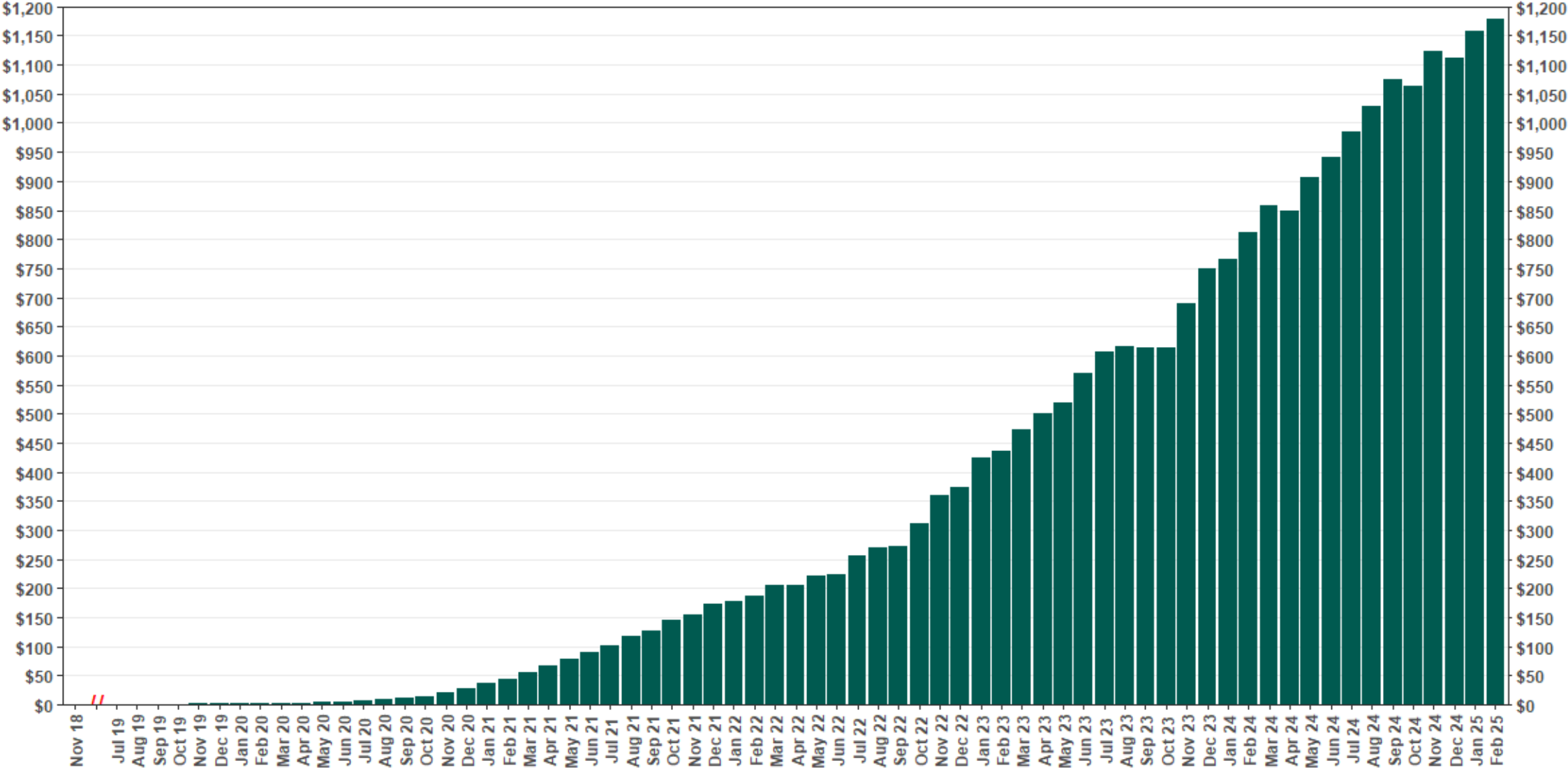
Chart 1: Funded Accounts

As of 2/28/25



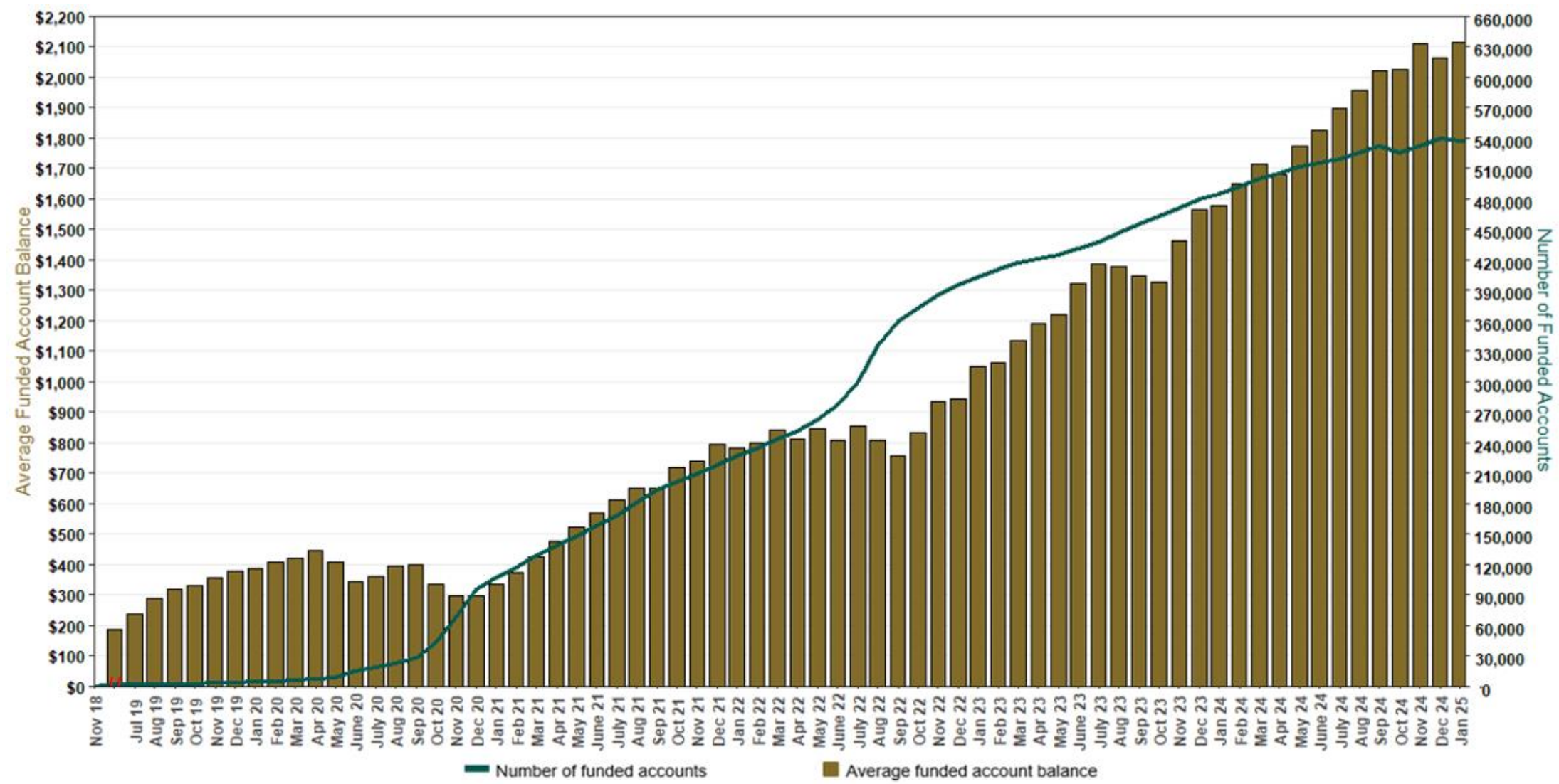
The Program operated a limited scope pilot from November 2018 through June 2019 prior to full statewide launch on July 1, 2019.

Chart 2: Total Assets (millions)
As of 2/28/25



The Program operated a limited scope pilot from November 2018 through June 2019 prior to full statewide launch on July 1, 2019.

Chart 3: Average Funded Account Balance
As of 2/28/25



The Program operated a limited scope pilot from November 2018 through June 2019 prior to full statewide launch on July 1, 2019.

Chart 4: Distribution of Accounts by Balance

As of 2/28/25

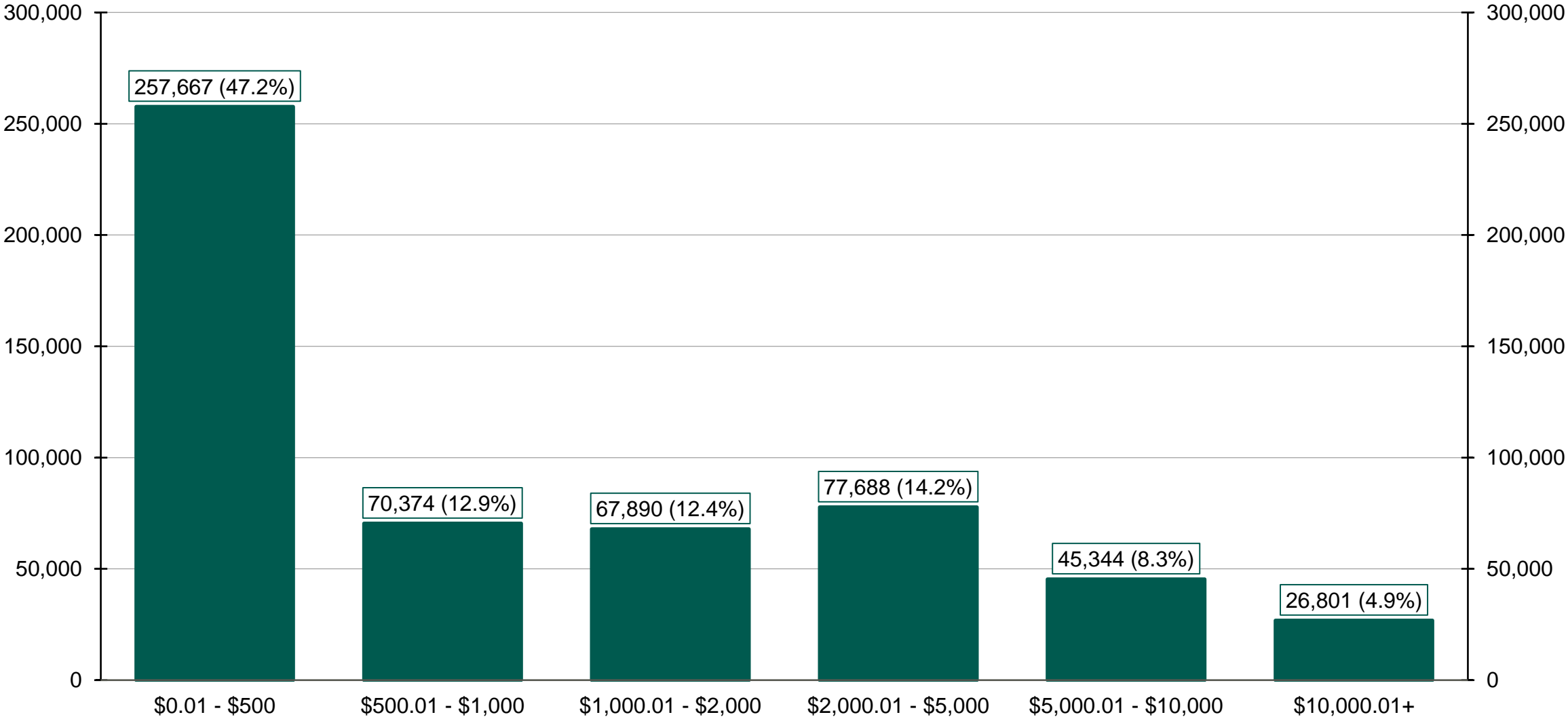
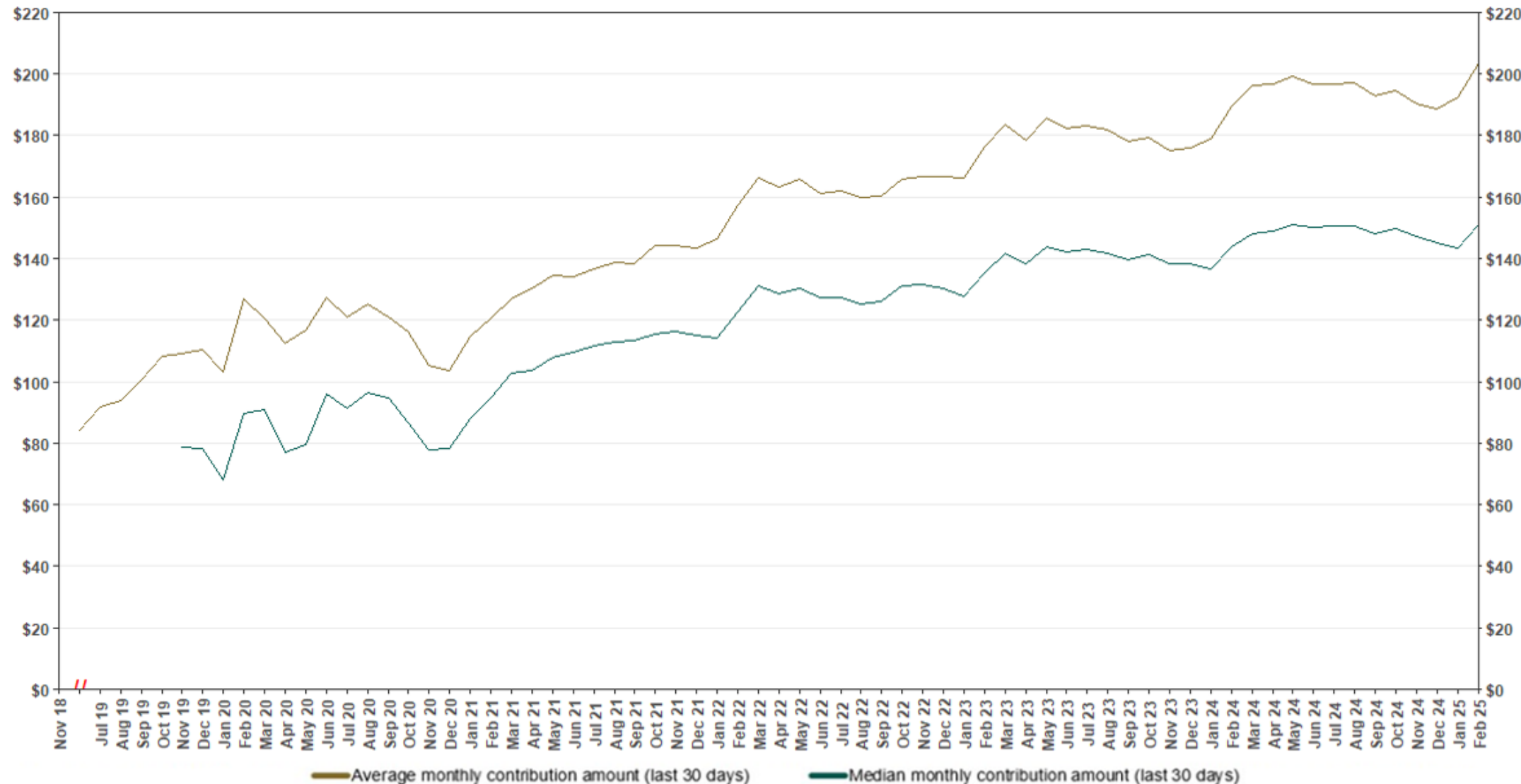
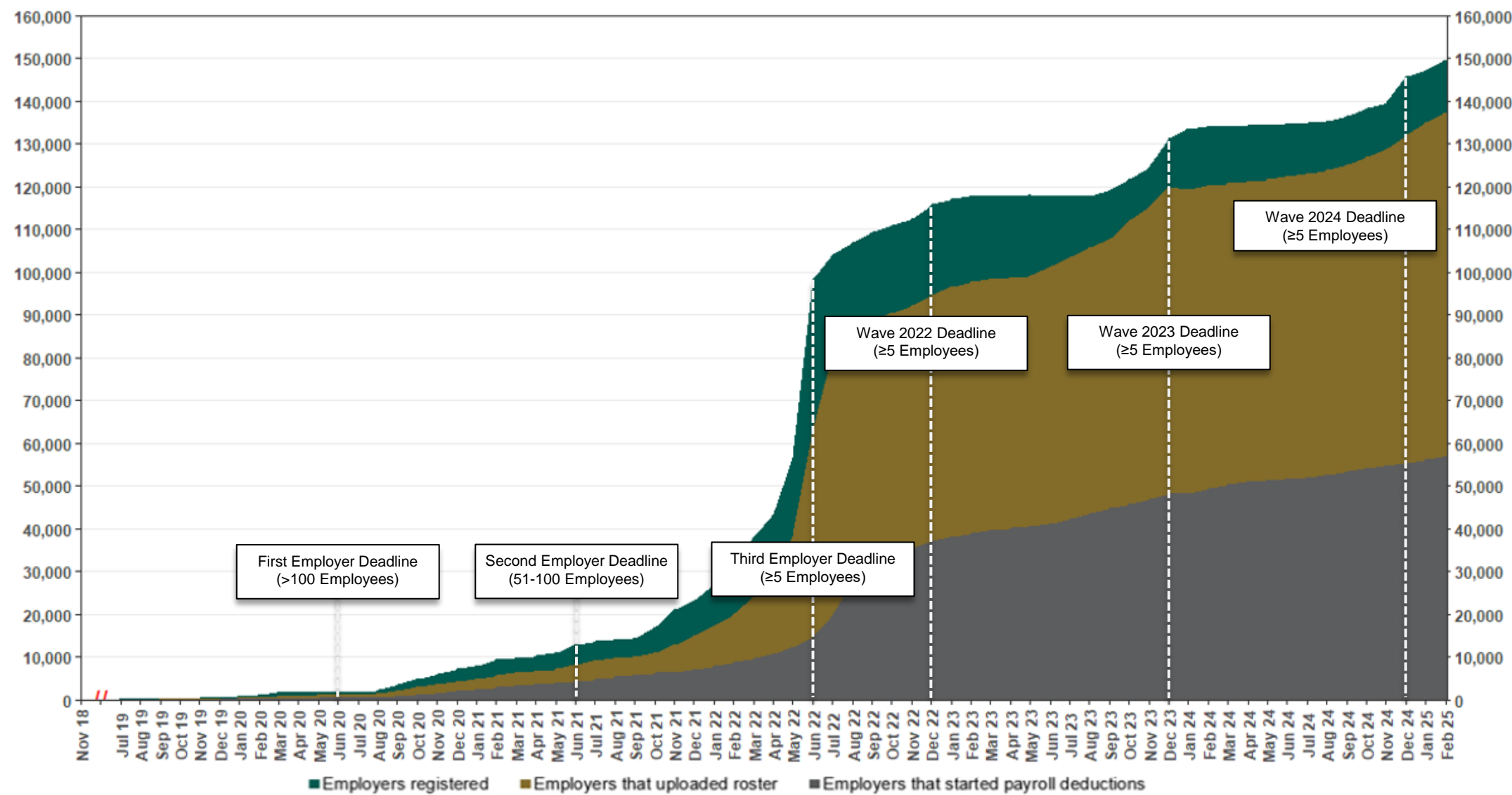


Chart 5: Monthly Contributions Per Saver
As of 2/28/25



The Program operated a limited scope pilot from November 2018 through June 2019 prior to full statewide launch on July 1, 2019.

Chart 6: Status of All Registered Employers
As of 2/28/25



The Program operated a limited scope pilot from November 2018 through June 2019 prior to full statewide launch on July 1, 2019.

Chart 7: Status of Post-Deadline Employers

As of 2/28/25

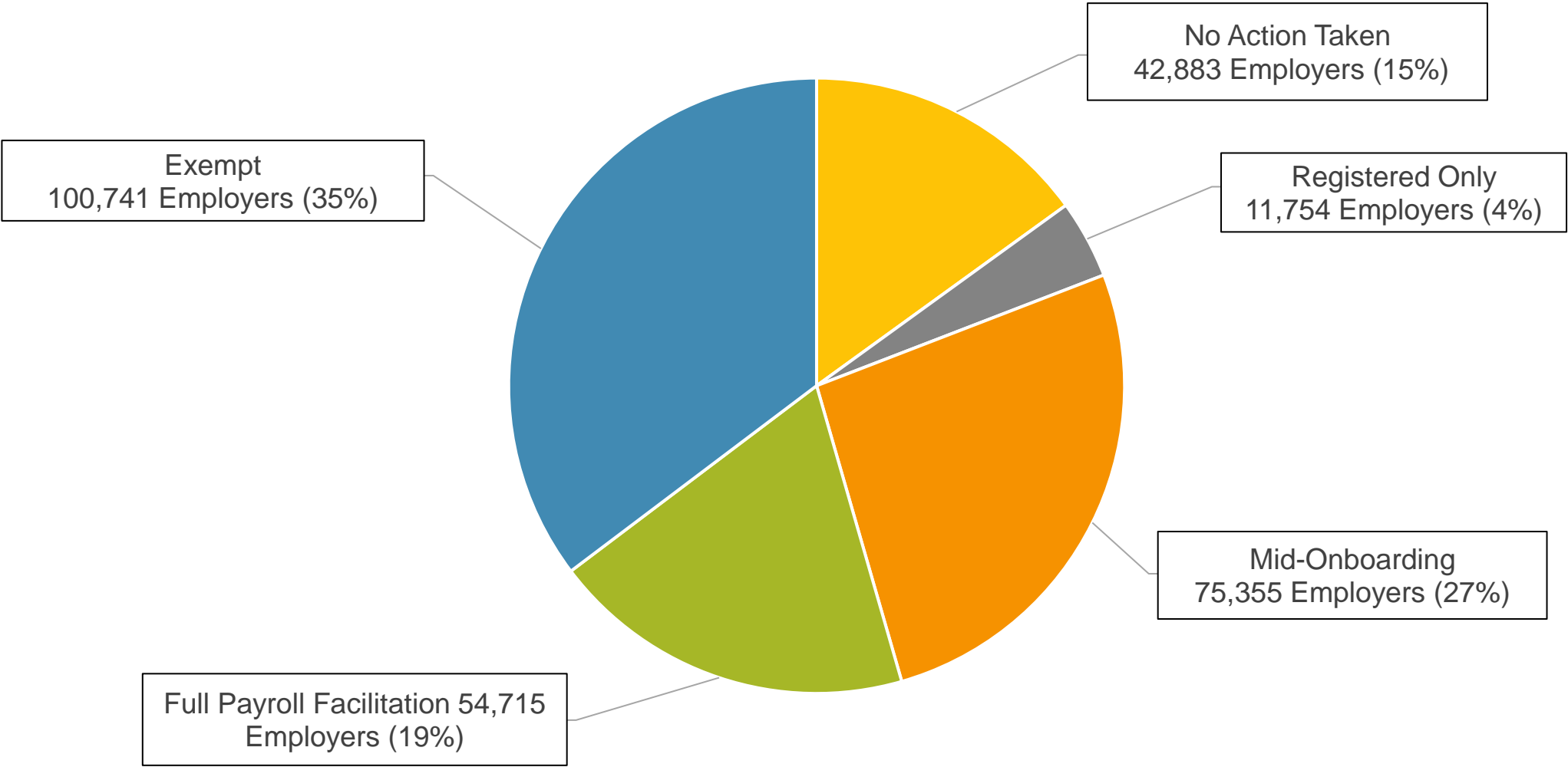
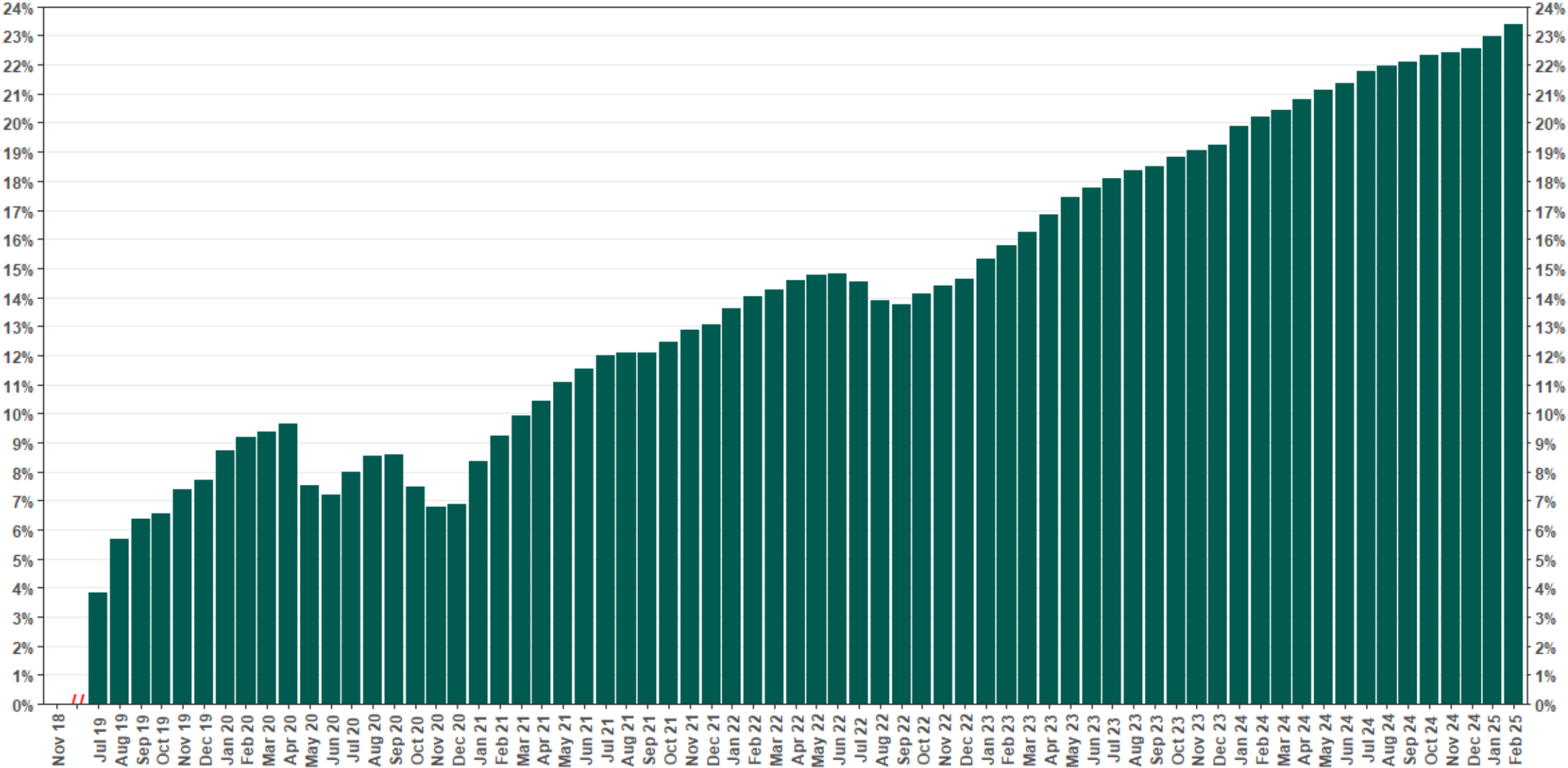


Chart 8: Accounts w/ Full Withdrawal as % of Payroll Contributing Accounts

As of 2/28/25



The Program operated a limited scope pilot from November 2018 through June 2019 prior to full statewide launch on July 1, 2019.