



CalSavers Retirement Savings Program Participation & Funding Snapshot as of 7/31/2025

Employer Registration Status Changes

Employer Status	7/31/2025	4/30/2025	Change	% Change
Registered	160,686	154,796	5,890	3.8%
Uploaded Roster	148,628	142,783	5,845	4.1%
Started Payroll Deductions	60,481	58,799	1,682	2.9%
Facilitated Deductions in last 90 days	40,410	40,227	183	0.5%
Exempt	124,075	119,129	4,946	4.2%

Participant Savings and Enrollment Changes

Participant Account Status	7/31/2025	4/30/2025	Change	% Change
Funded Accounts	566,503	548,811	17,692	3.2%
Payroll Contributing Accounts	670,174	647,550	22,624	3.5%
Multiple Employer Accounts*	100,374	95,491	4,883	5.1%
Self-Enrolled Funded Accounts	3,033	2,937	96	3.3%
Effective Opt-Out Rate	34.94%	35.29%	-0.35%	-1.0%

Status of Eligible Employers by Wave

Wave (Deadline)	Employers Registered	Employers Exempted	Total Employers Responded	Employers Sent Payroll	Total Estimated Eligible Employers	Employer Response Rate
Prior Waves	131,492	91,043	222,535	54,196	242,272	91.9%
Wave 2024 (12/31/24)	9,837	10,996	20,833	2,727	43,231	48.2%
Wave 4 (12/31/25)	19,348	22,035	41,383	3,558	N/A	N/A
Total	160,677	124,074	284,751	60,481	285,503	99.7%

* This data point reflects the number of funded account holders associated with more than one registered employer
 ** Withdrawal Rate is calculated as Accounts with a full withdrawal as a percent of Payroll Contributing Accounts

Funding Amounts and Withdrawals

Funding Amounts	7/31/2025	4/30/2025	Change	% Change
Total Assets	\$1,368,389,666	\$1,198,416,588	\$169,973,078	14.2%
Average Funded Account Balance	\$2,416	\$2,184	\$232	10.6%
Median Funded Account Balance	\$632	\$589	\$43	7.3%
Total Contributions Amount	\$1,557,143,926	\$1,441,931,357	\$115,212,569	8.0%
Average Monthly Contribution Amount	\$204	\$212	-\$8	-3.8%
Median Monthly Contribution Amount	\$154	\$157	-\$3	-1.9%
Average Contribution Rate	5.23%	5.24%	-0.01%	-0.2%
Amount of Withdrawals	\$431,338,783	\$382,642,645	\$48,696,138	12.7%
Accounts with a Full Withdrawal	163,749	154,543	9,206	6.0%
Accounts with a Partial Withdrawal	30,216	27,686	2,530	9.1%
Withdrawal Rate**	24.43%	23.87%	0.56%	2.3%

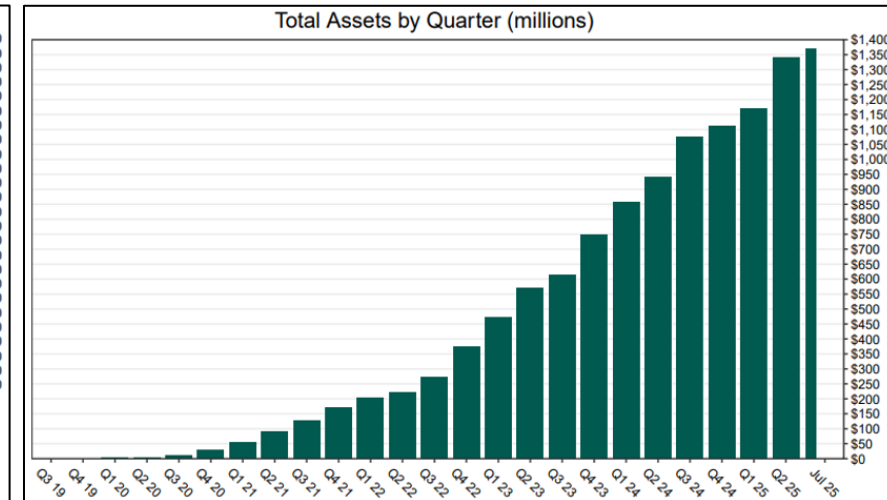
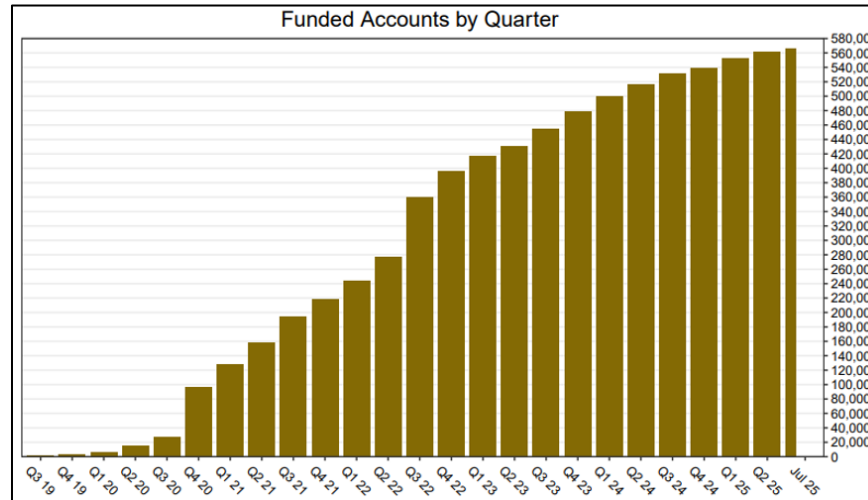
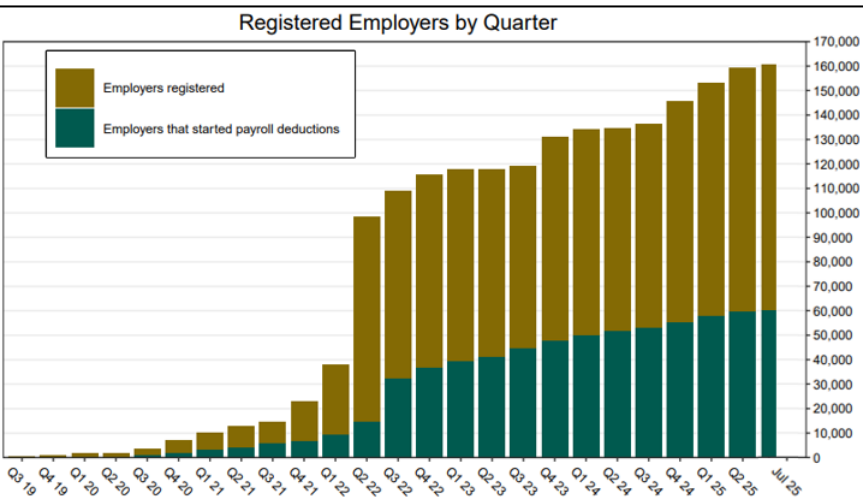
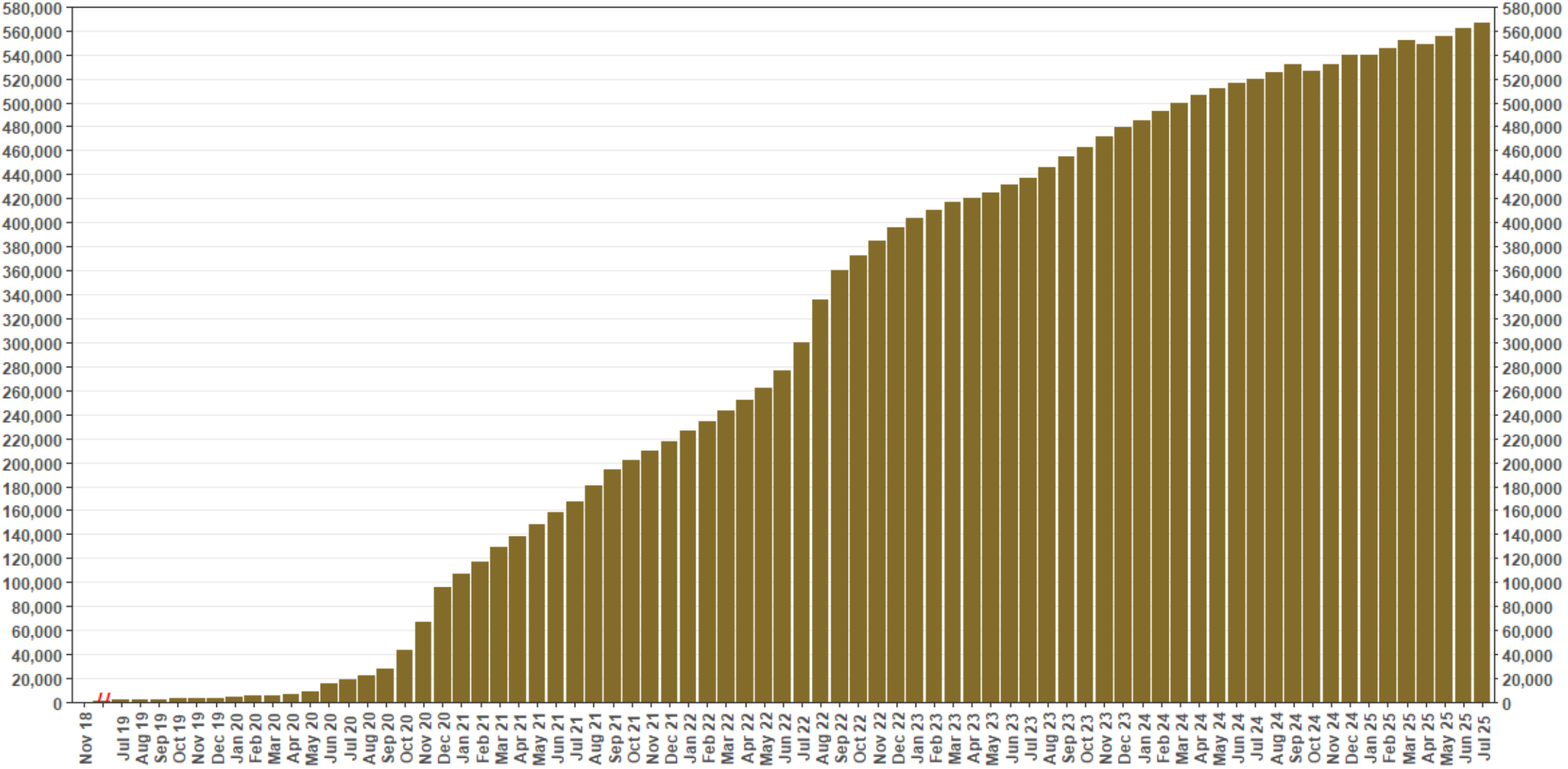


Chart 1: Funded Accounts

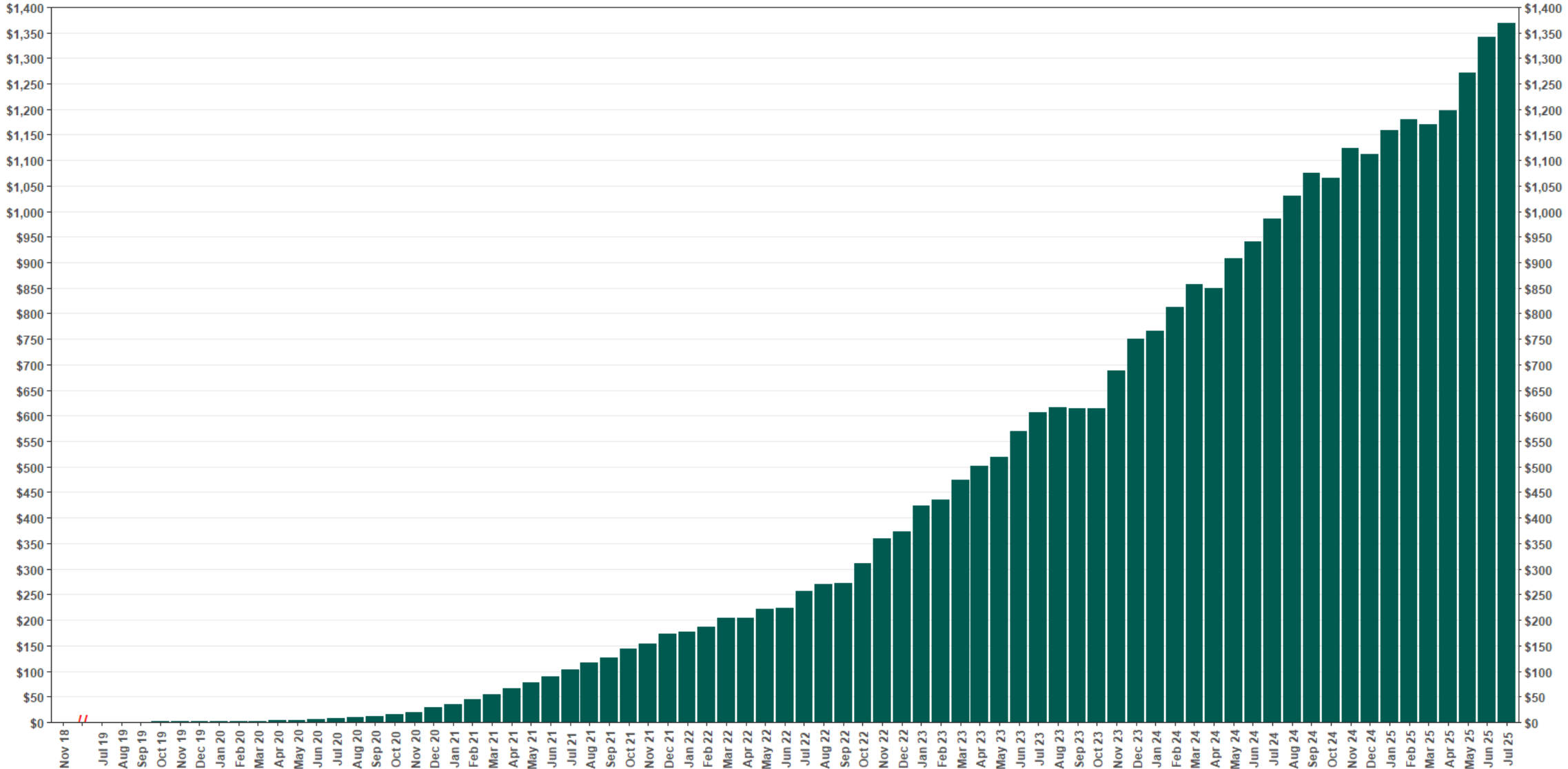
As of 7/31/25



The Program operated a limited scope pilot from November 2018 through June 2019 prior to full statewide launch on July 1, 2019.

Chart 2: Total Assets (millions)

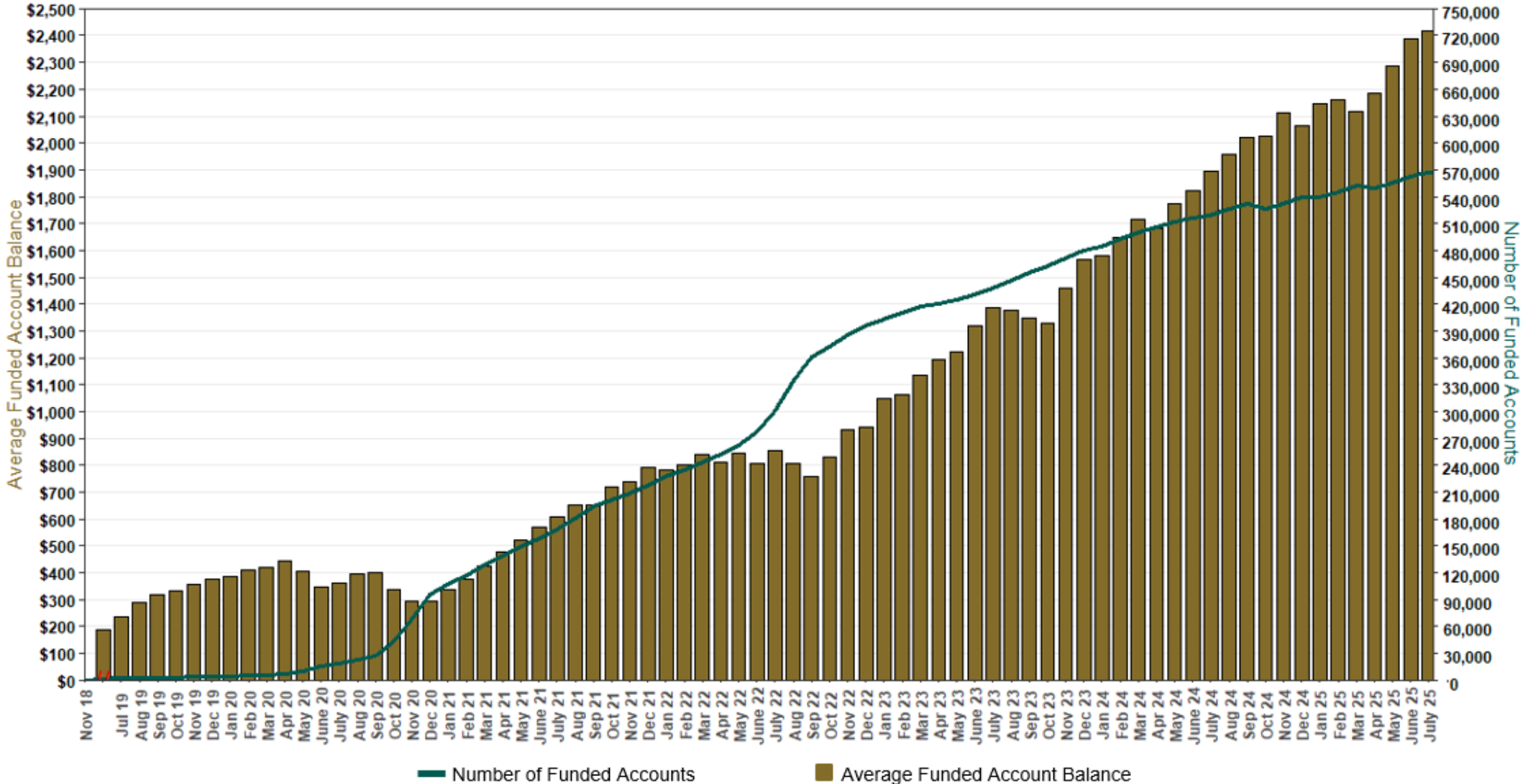
As of 7/31/25



The Program operated a limited scope pilot from November 2018 through June 2019 prior to full statewide launch on July 1, 2019.

Chart 3: Average Funded Account Balance

As of 7/31/25



The Program operated a limited scope pilot from November 2018 through June 2019 prior to full statewide launch on July 1, 2019.

Chart 4: Distribution of Accounts by Balance

As of 7/31/25

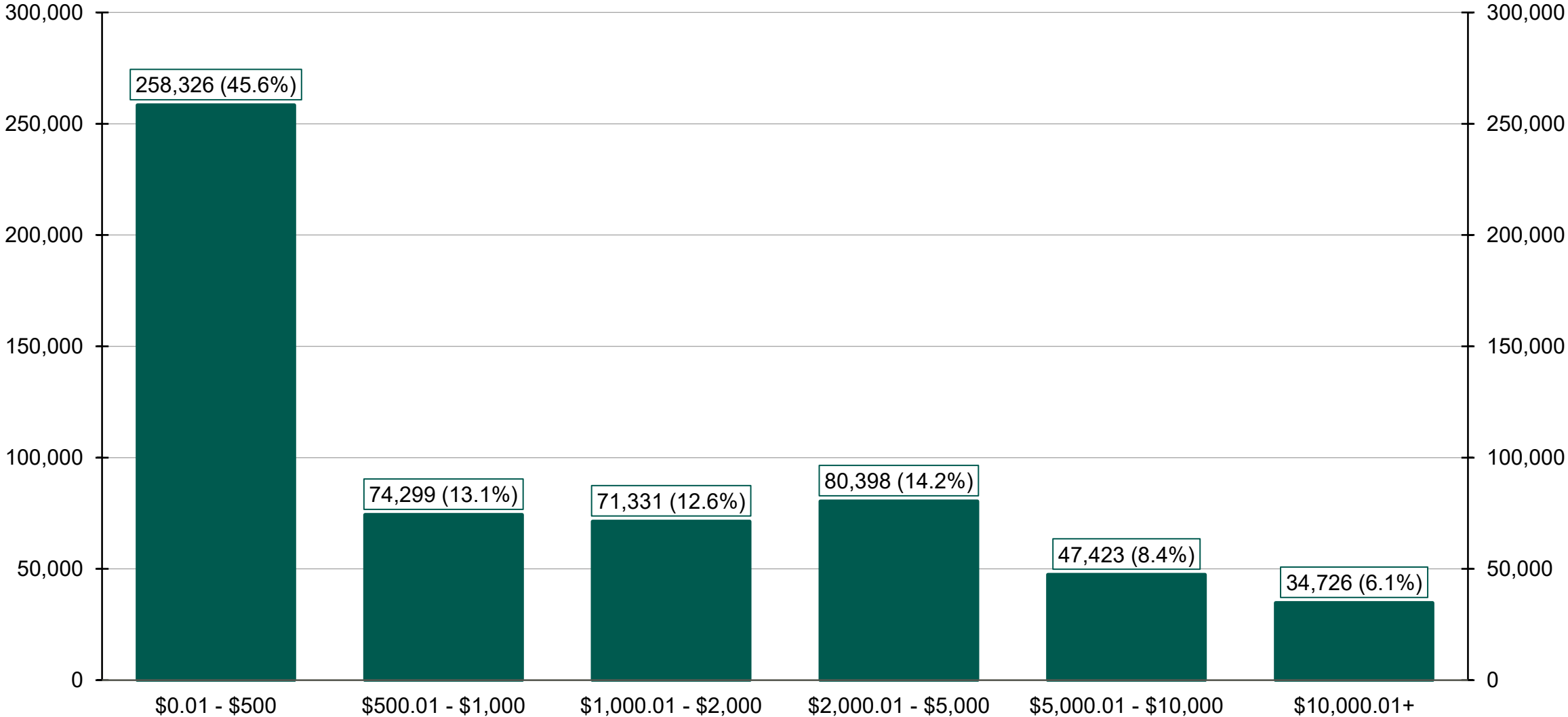
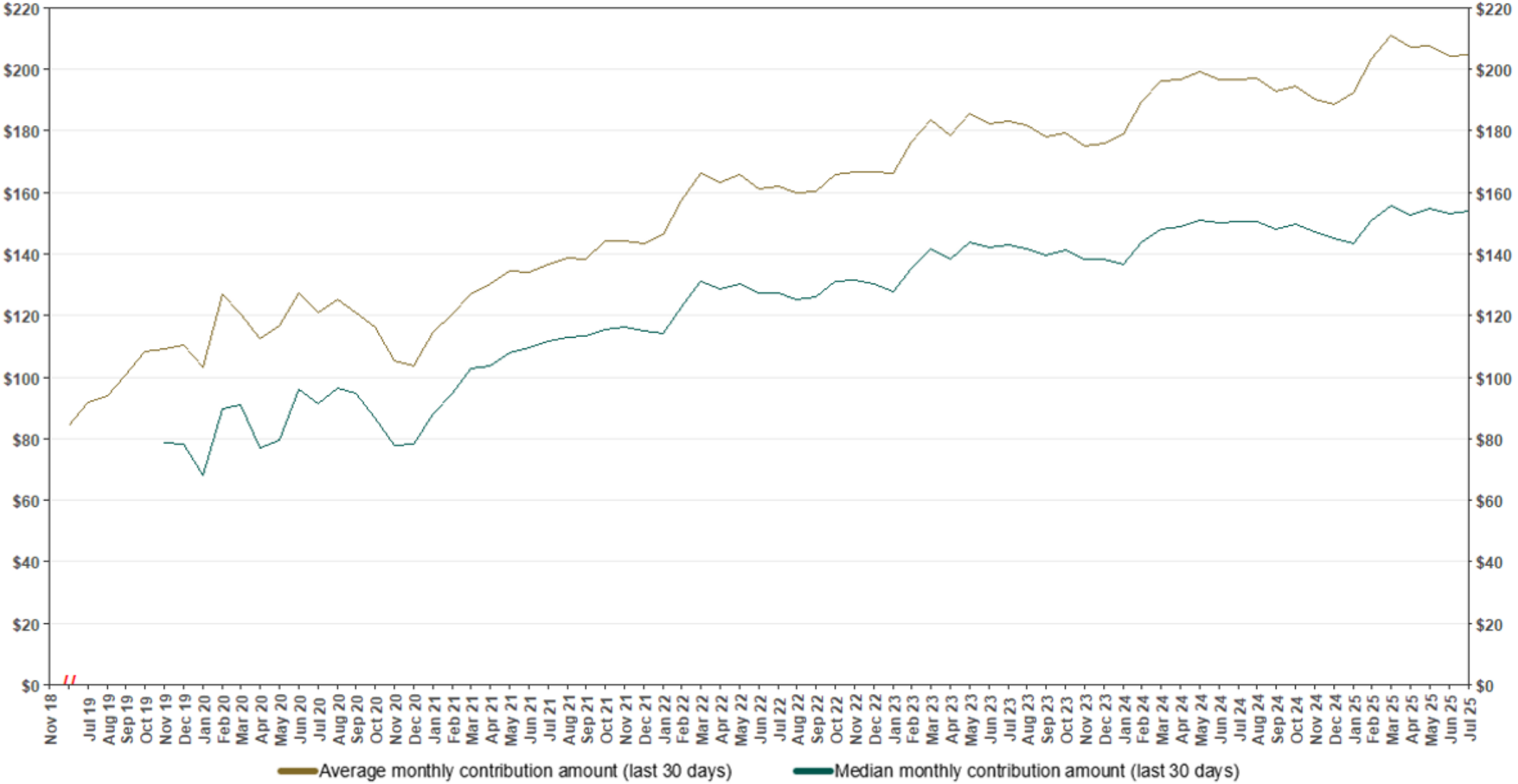


Chart 5: Monthly Contributions Per Saver

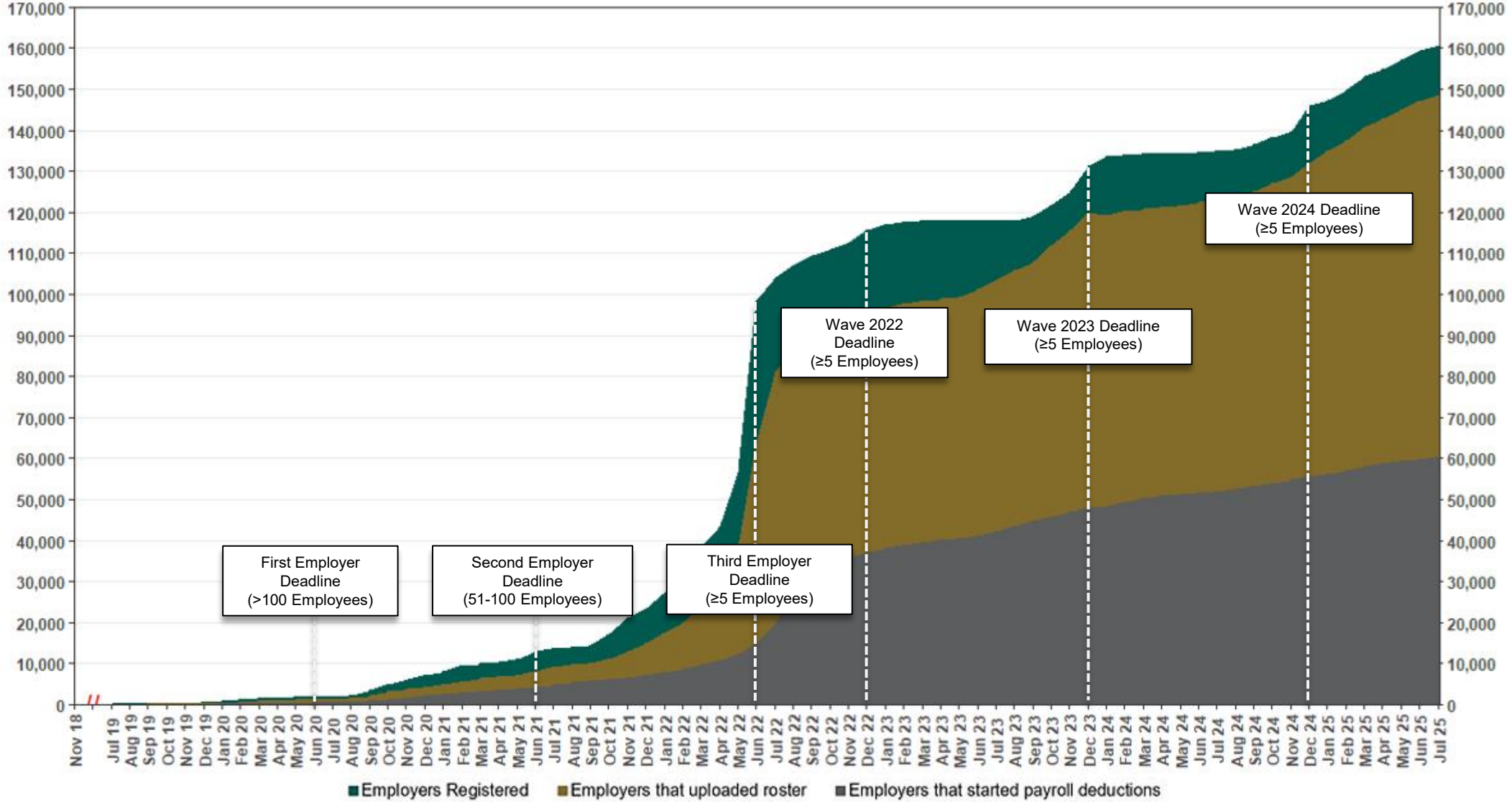
As of 7/31/25



The Program operated a limited scope pilot from November 2018 through June 2019 prior to full statewide launch on July 1, 2019.

Chart 6: Status of All Registered Employers

As of 7/31/25



The Program operated a limited scope pilot from November 2018 through June 2019 prior to full statewide launch on July 1, 2019.

Chart 7: Status of Post-Deadline Employers

As of 7/31/25

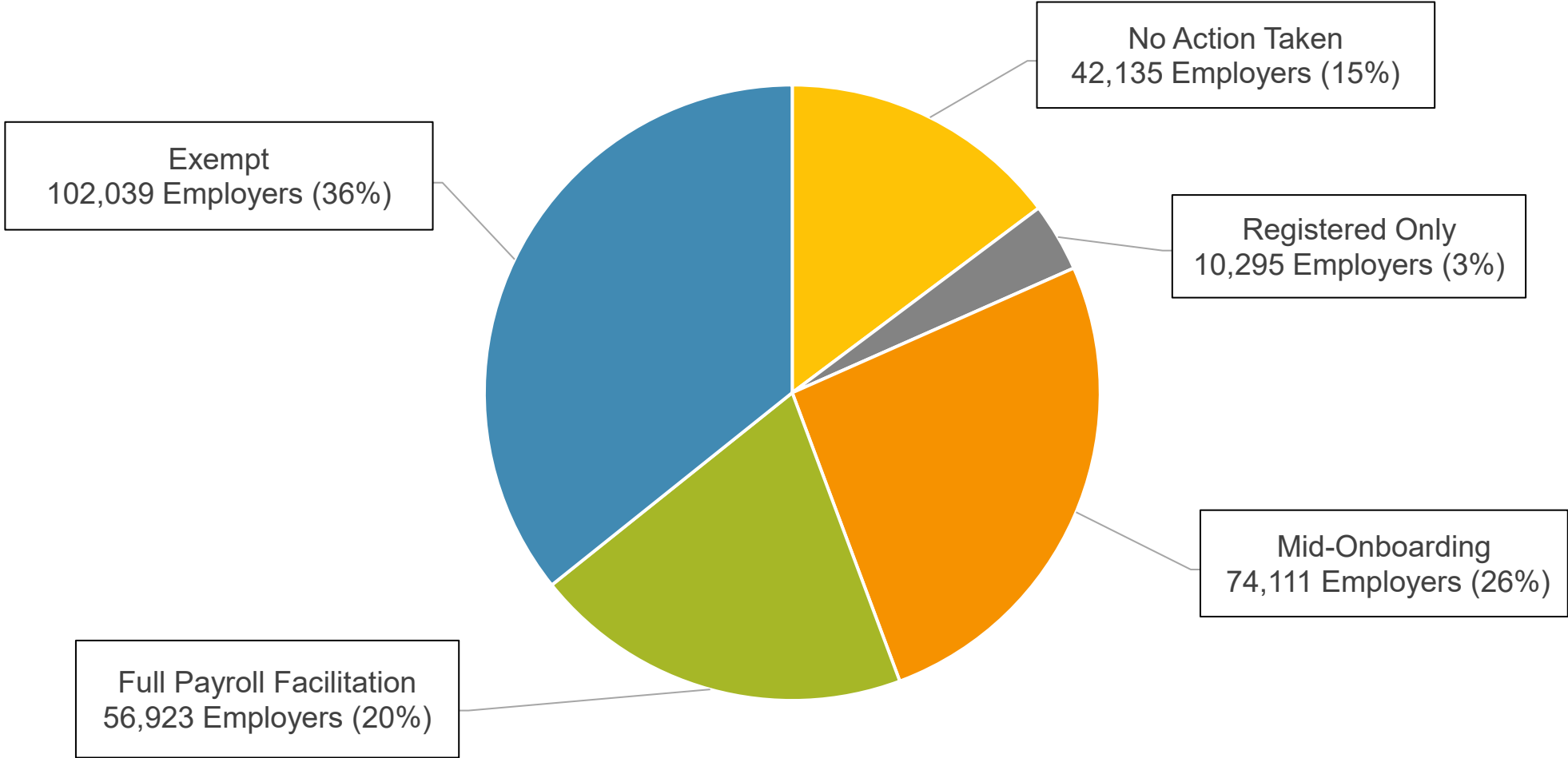
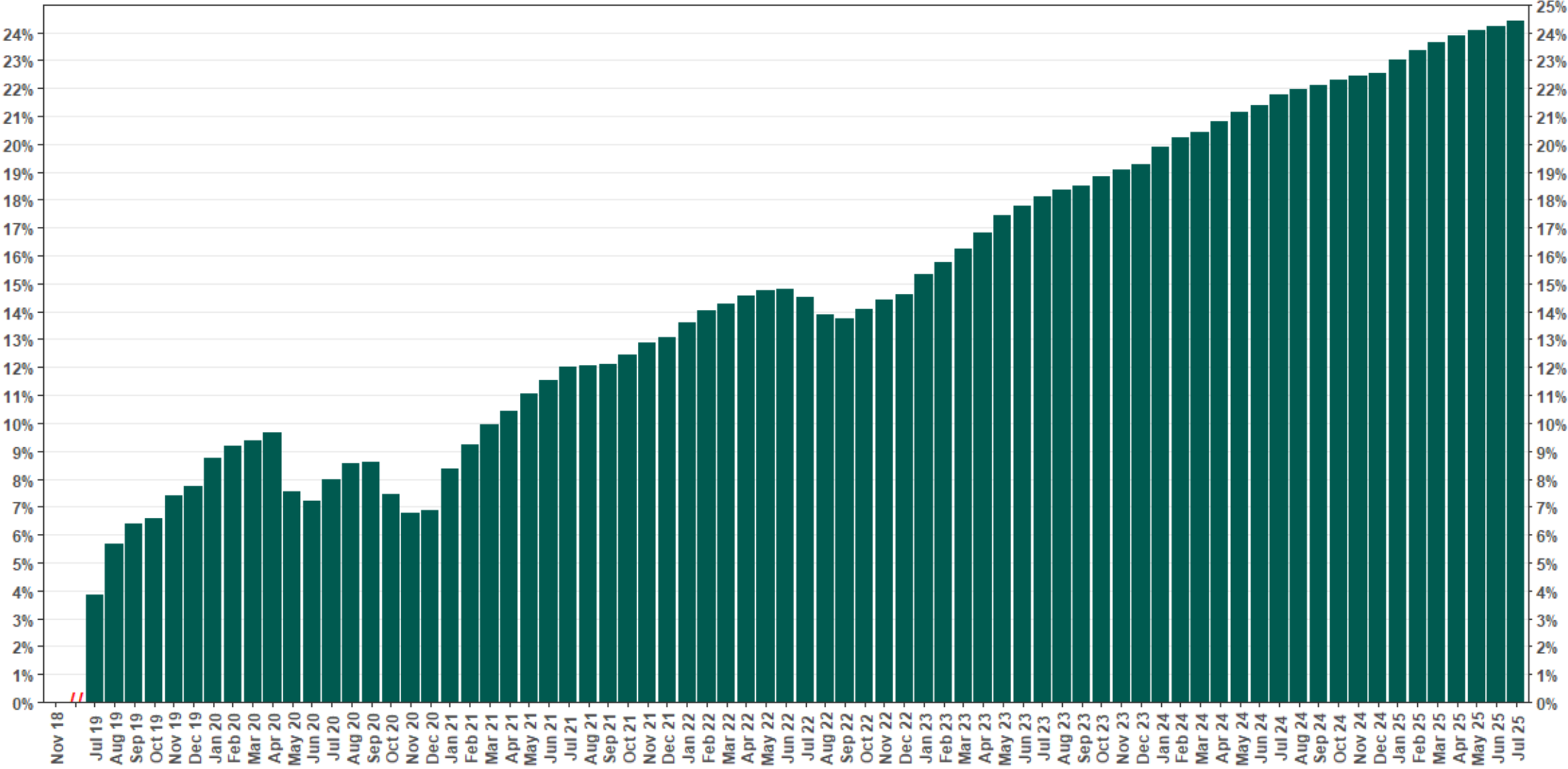


Chart 8: Accounts w/ Full Withdrawal as % of Payroll Contributing Accounts

As of 7/31/25



The Program operated a limited scope pilot from November 2018 through June 2019 prior to full statewide launch on July 1, 2019.