



CalSavers Retirement Savings Program
Participation & Funding Snapshot as of 6/30/2025

www.treasurer.ca.gov/calsavers/reports/2025

Employer Registration Status Changes

Employer Status	6/30/2025	3/31/2025	Change	% Change
Registered	159,225	153,019	6,206	4.1%
Uploaded Roster	147,079	140,676	6,403	4.6%
Started Payroll Deductions	59,888	57,953	1,935	3.3%
Facilitated Deductions in last 90 days	40,391	40,001	390	1.0%
Exempt	123,003	117,438	5,565	4.7%

Participant Savings and Enrollment Changes

Participant Account Status	6/30/2025	3/31/2025	Change	% Change
Funded Accounts	562,147	552,300	9,847	1.8%
Payroll Contributing Accounts	661,774	639,389	22,385	3.5%
Multiple Employer Accounts*	99,074	95,844	3,230	3.4%
Self-Enrolled Funded Accounts	3,018	2,935	83	2.8%
Effective Opt-Out Rate	35.07%	35.39%	-0.32%	-0.9%

Status of Eligible Employers by Wave

Wave (Deadline)	Employers Registered	Employers Exempted	Total Employers Responded	Total Estimated Eligible Employers	Employer Response Rate
Prior Waves	131,569	90,941	222,510	242,254	91.8%
Wave 2024 (12/31/24)	9,838	10,959	20,797	43,230	48.1%
Wave 4 (12/31/25)	17,812	21,103	38,915	N/A	N/A
Total	159,219	123,003	282,222	285,484	98.9%

* This data point reflects the number of funded account holders associated with more than one registered employer
** Withdrawal Rate is calculated as Accounts with a full withdrawal as a percent of Payroll Contributing Accounts

Funding Amounts and Withdrawals

Funding Amounts	6/30/2025	3/31/2025	Change	% Change
Total Assets	\$1,341,772,721	\$1,169,518,207	\$172,254,514	14.7%
Average Funded Account Balance	\$2,387	\$2,118	\$269	12.7%
Median Funded Account Balance	\$632	\$562	\$70	12.5%
Total Contributions Amount	\$1,518,004,655	\$1,402,796,849	\$115,207,806	8.2%
Average Monthly Contribution Amount	\$202	\$206	-\$4	-1.9%
Median Monthly Contribution Amount	\$151	\$152	-\$1	-0.7%
Average Contribution Rate	5.23%	5.24%	-0.01%	-0.2%
Amount of Withdrawals	\$413,325,074	\$366,469,687	\$46,855,387	12.8%
Accounts with a Full Withdrawal	160,288	151,072	9,216	6.1%
Accounts with a Partial Withdrawal	29,281	26,869	2,412	9.0%
Withdrawal Rate**	24.22%	23.63%	0.59%	2.5%

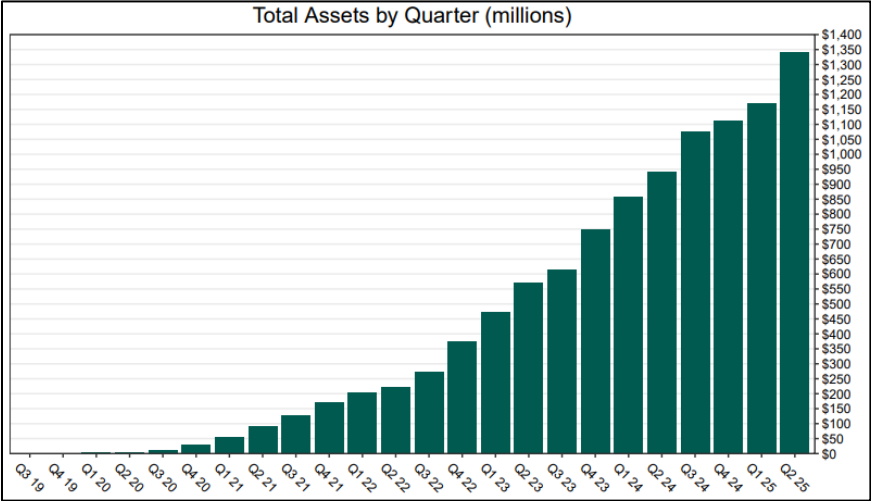
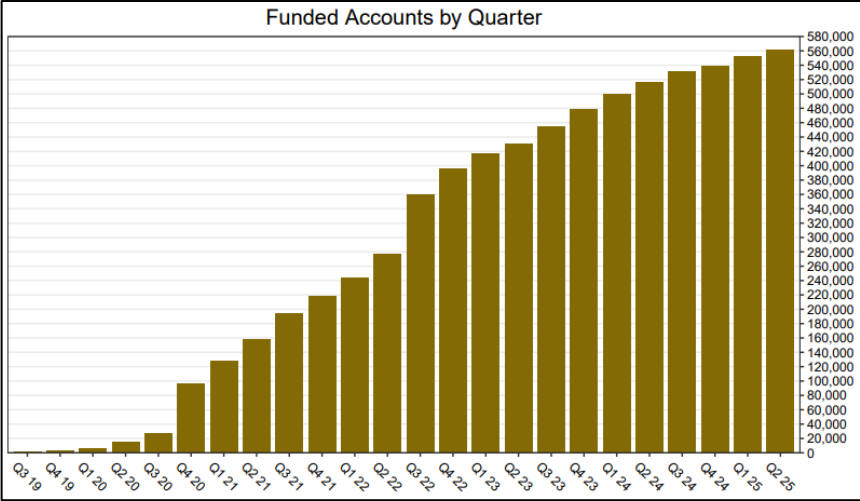
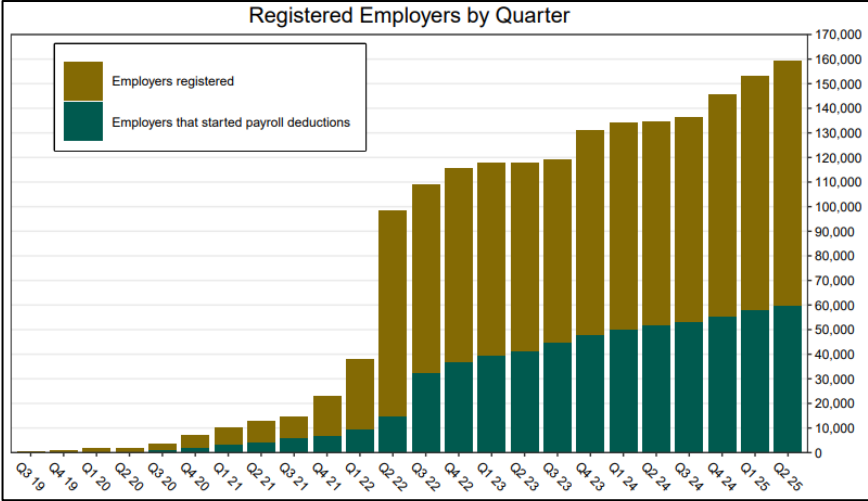
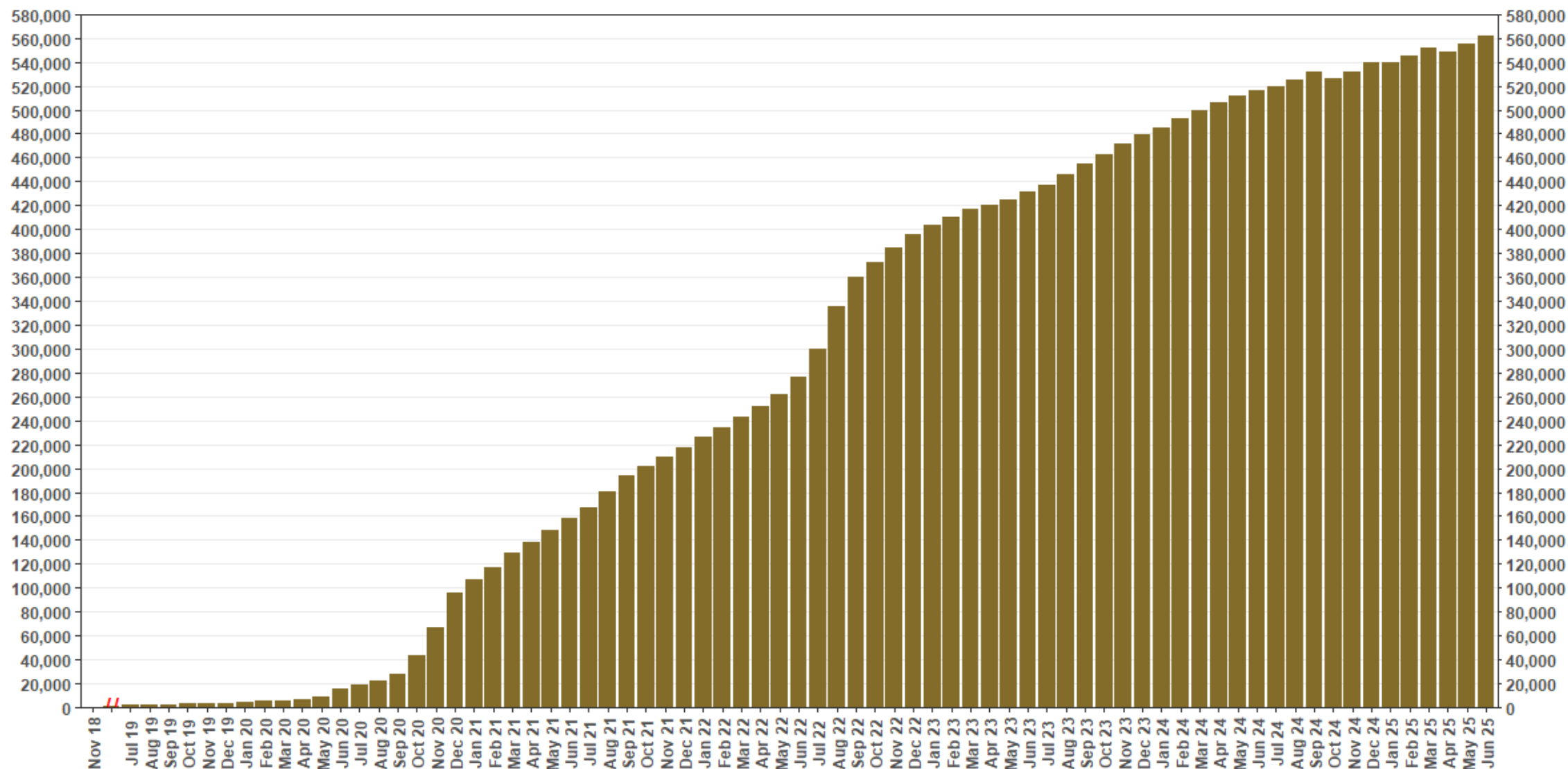


Chart 1: Funded Accounts

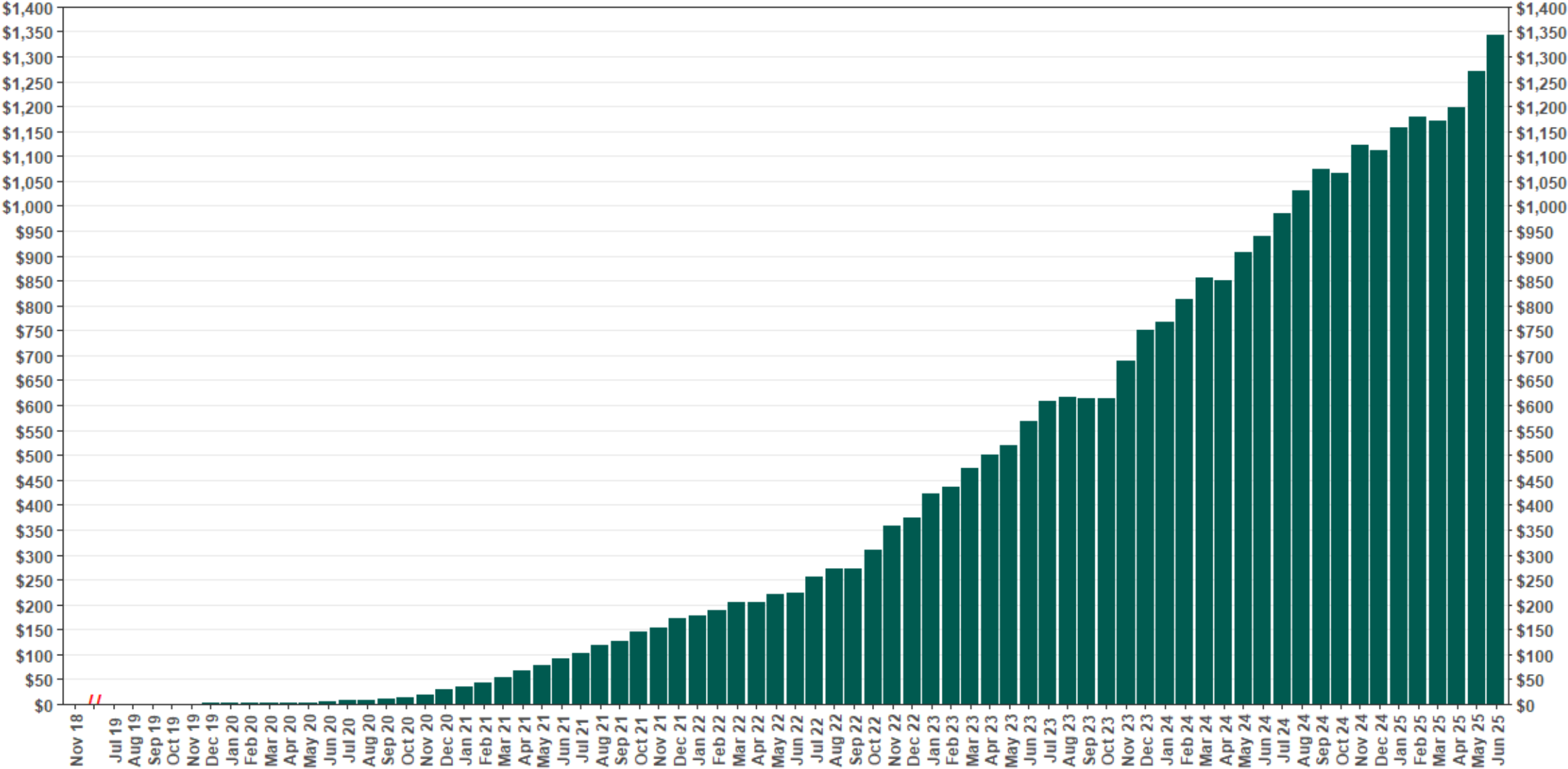
As of 6/30/25



The Program operated a limited scope pilot from November 2018 through June 2019 prior to full statewide launch on July 1, 2019.

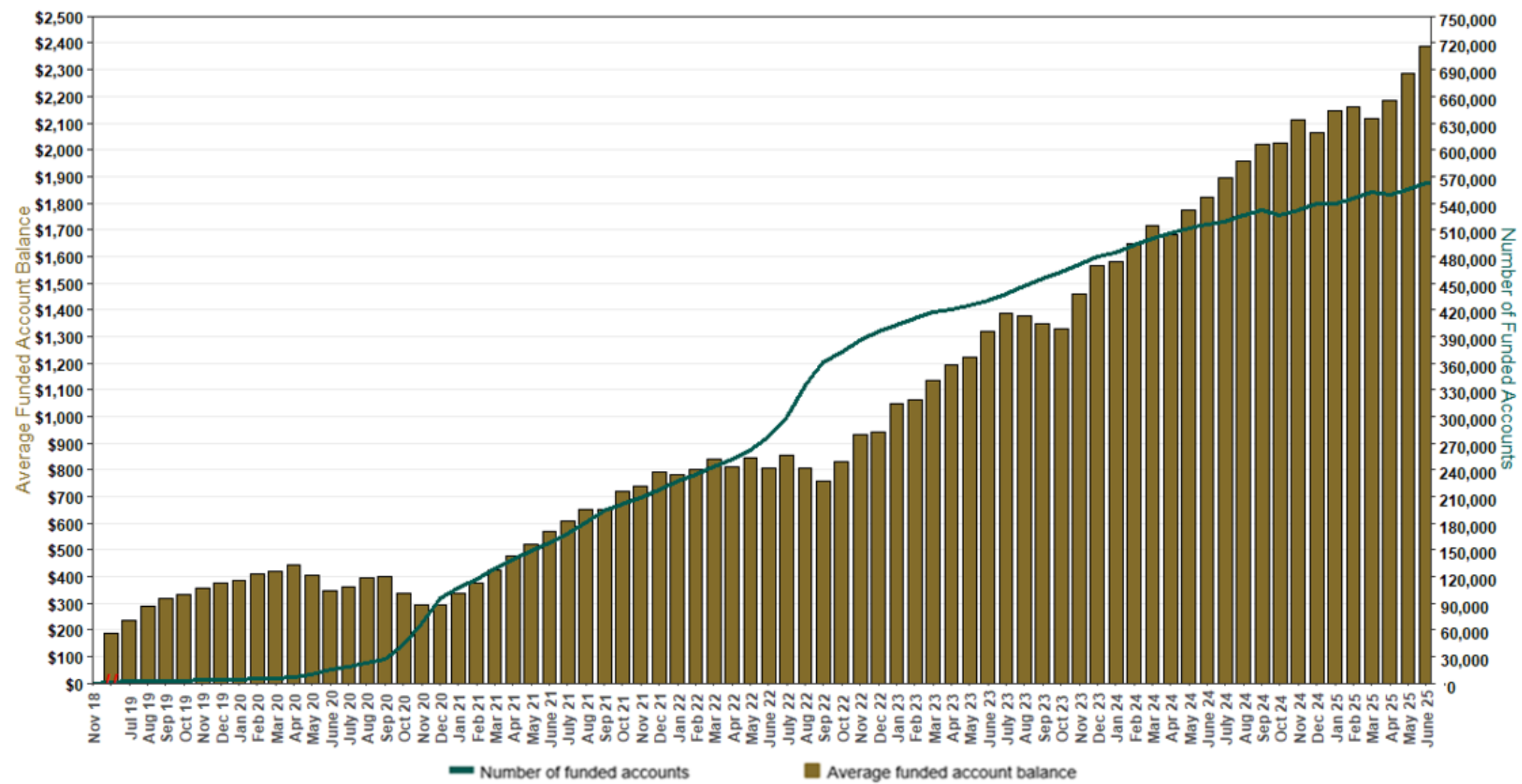
Chart 2: Total Assets (millions)

As of 6/30/25



The Program operated a limited scope pilot from November 2018 through June 2019 prior to full statewide launch on July 1, 2019.

Chart 3: Average Funded Account Balance
As of 6/30/25



The Program operated a limited scope pilot from November 2018 through June 2019 prior to full statewide launch on July 1, 2019.

Chart 4: Distribution of Accounts by Balance
As of 6/30/25

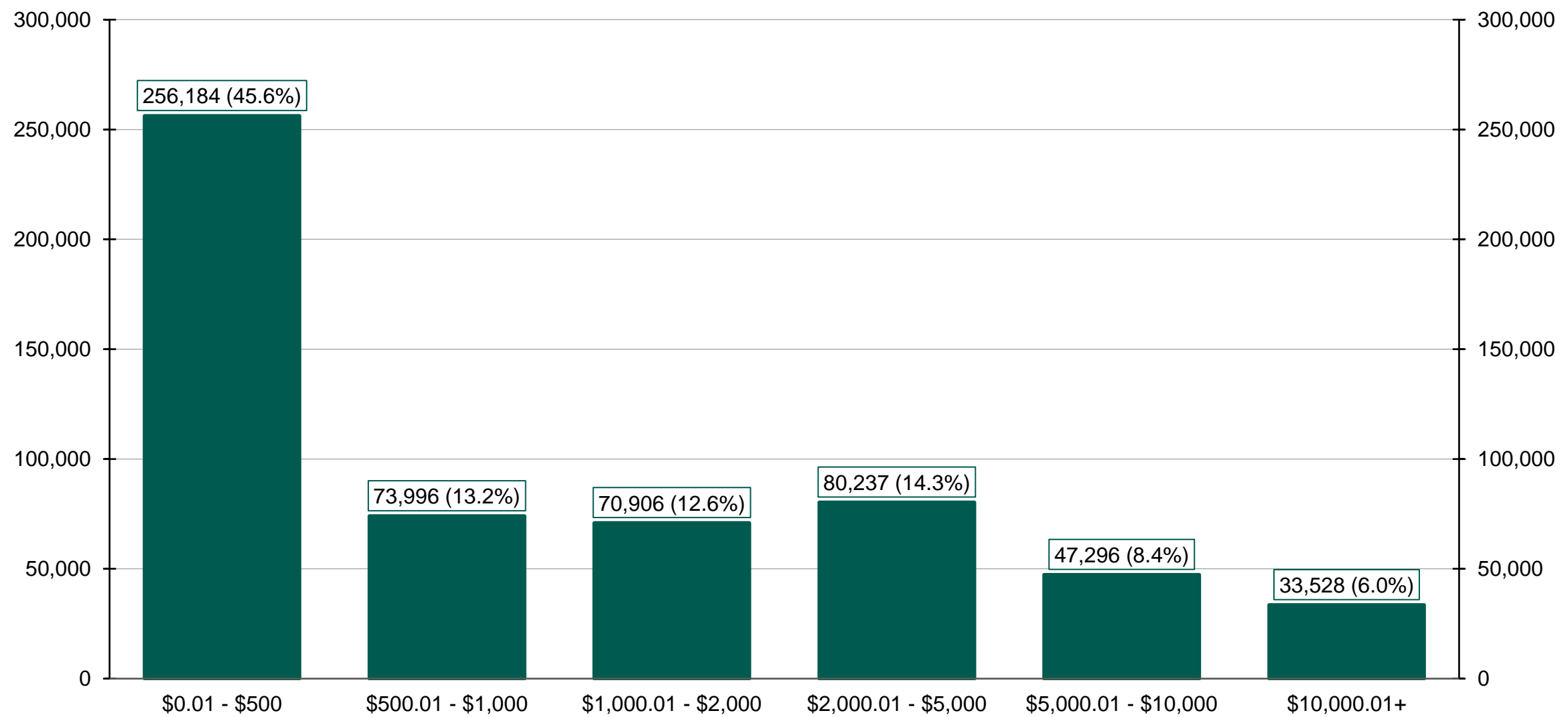
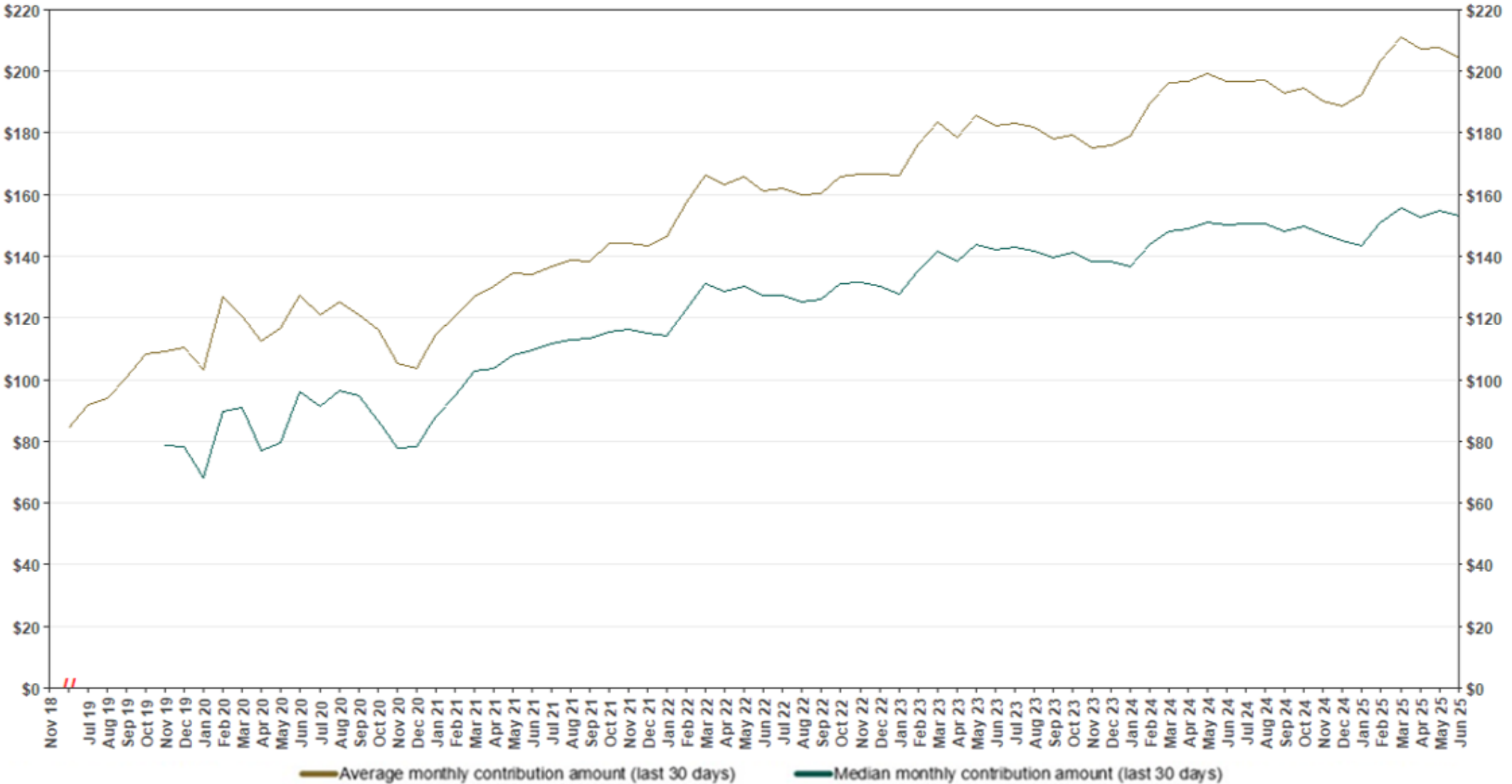
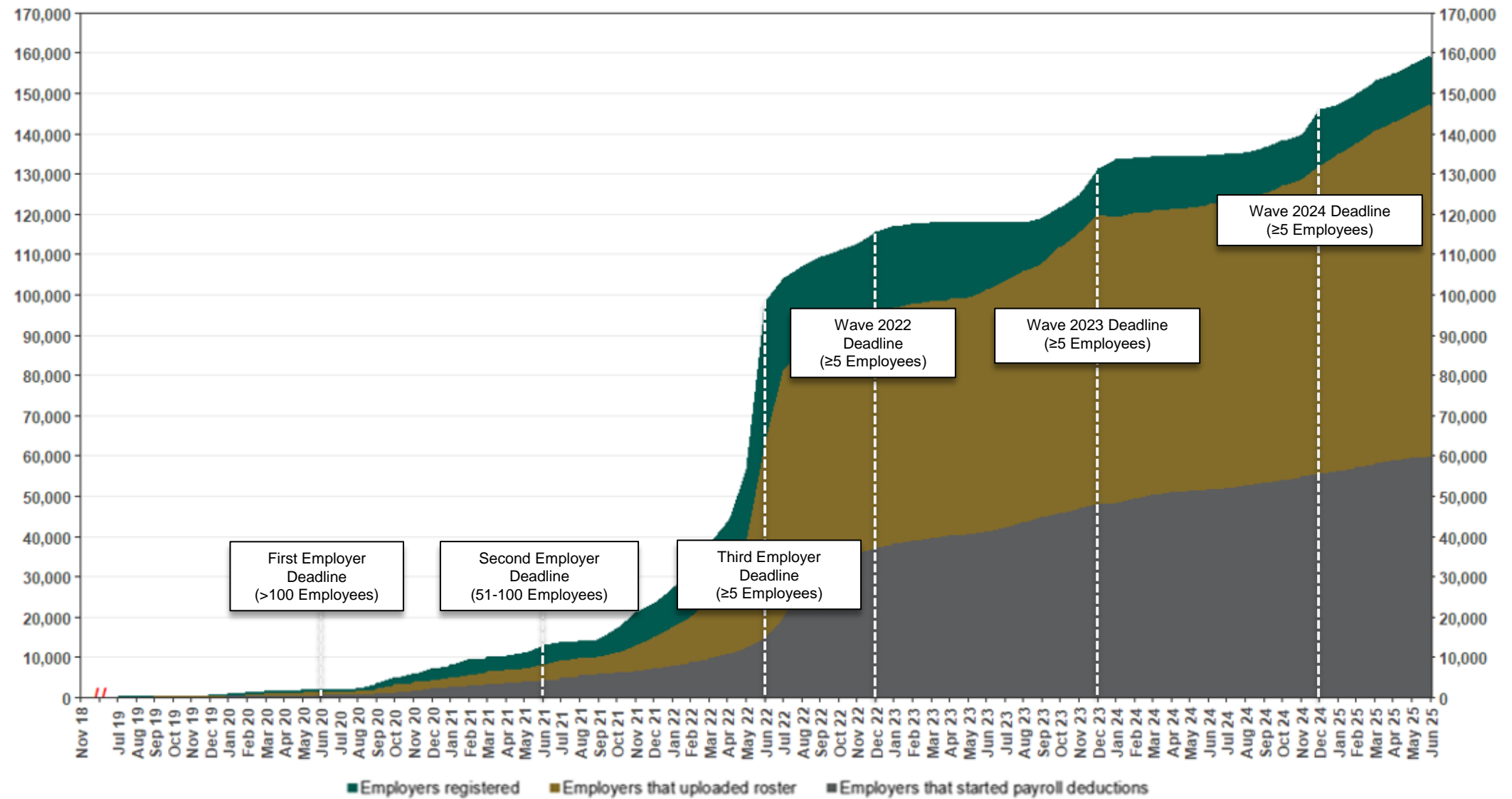


Chart 5: Monthly Contributions Per Saver
As of 6/30/25



The Program operated a limited scope pilot from November 2018 through June 2019 prior to full statewide launch on July 1, 2019.

Chart 6: Status of All Registered Employers
As of 6/30/25



The Program operated a limited scope pilot from November 2018 through June 2019 prior to full statewide launch on July 1, 2019.

Chart 7: Status of Post-Deadline Employers

As of 6/30/25

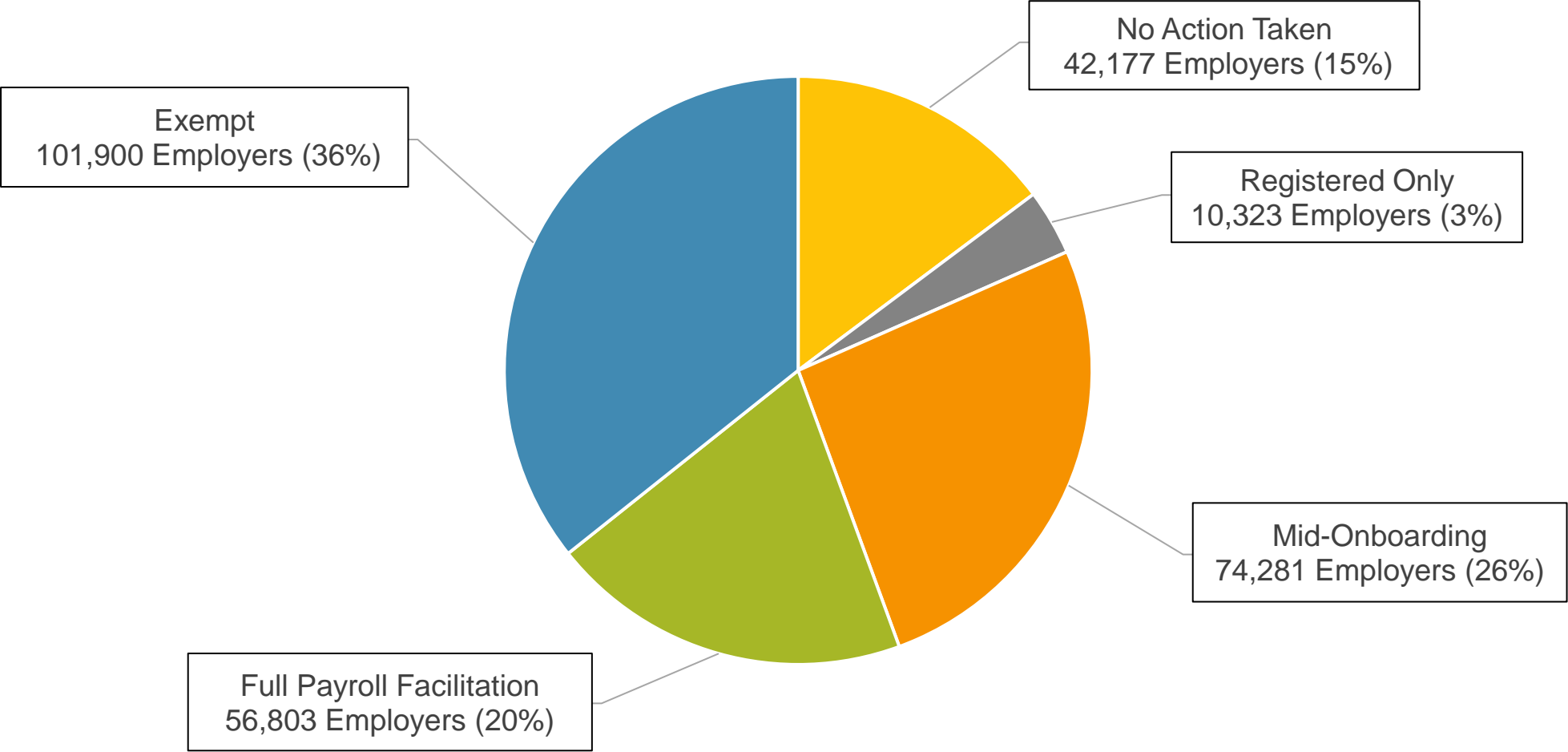
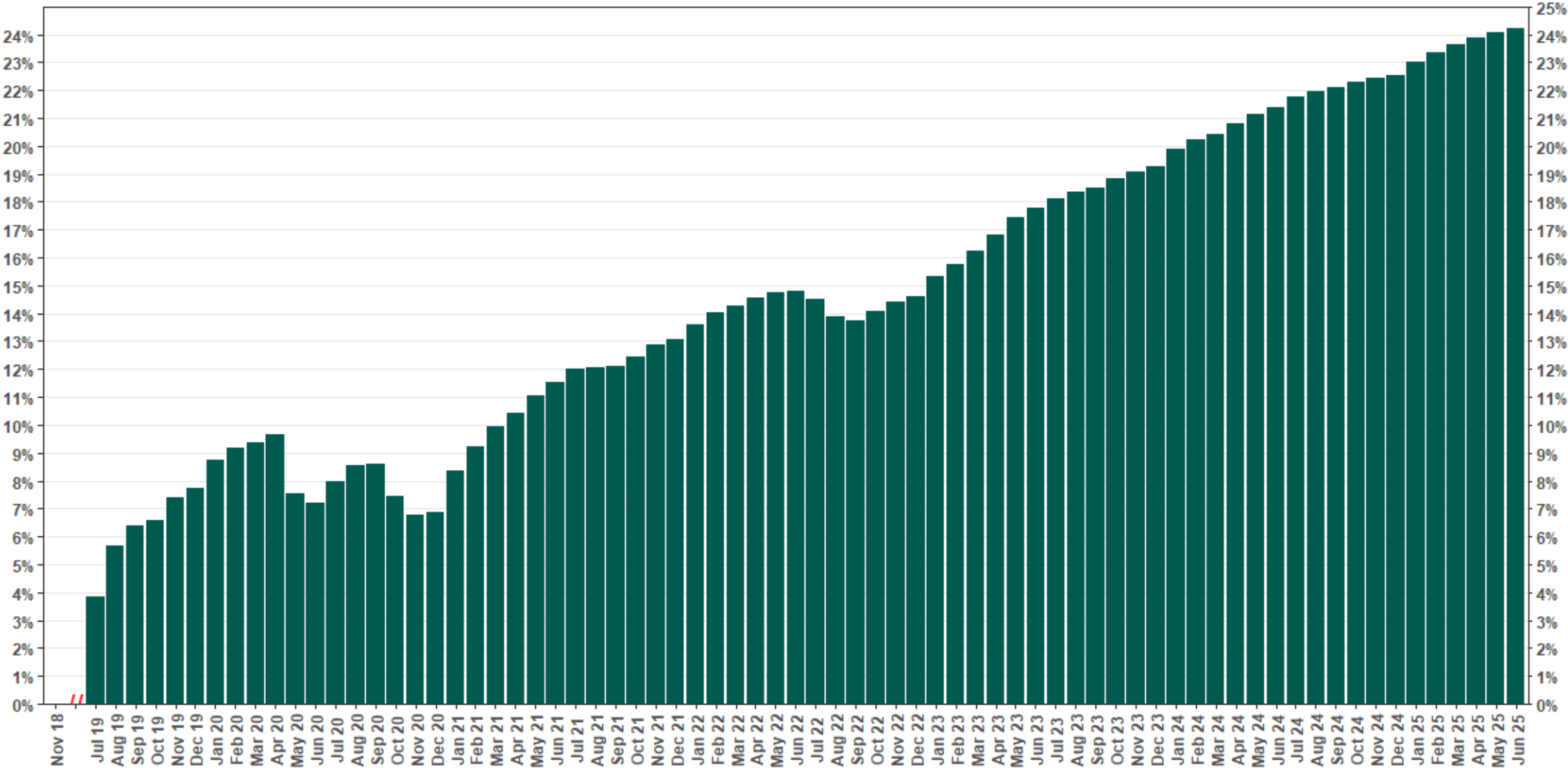


Chart 8: Accounts w/ Full Withdrawal as % of Payroll Contributing Accounts

As of 6/30/25



The Program operated a limited scope pilot from November 2018 through June 2019 prior to full statewide launch on July 1, 2019.