



CalSavers Retirement Savings Program

Participation & Funding Snapshot as of 3/31/2025

Employer Registration Status Changes

| Employer Status | 3/31/2025 | 12/31/2024 | Change | % Change |
|--|-----------|------------|--------|----------|
| Registered | 153,019 | 145,839 | 7,180 | 4.9% |
| Uploaded Roster | 140,676 | 131,967 | 8,709 | 6.6% |
| Started Payroll Deductions | 57,953 | 55,459 | 2,494 | 4.5% |
| Facilitated Deductions in last 90 days | 40,001 | 39,126 | 875 | 2.2% |
| Exempt | 117,438 | 109,434 | 8,004 | 7.3% |

Participant Savings and Enrollment Changes

| Participant Account Status | 3/31/2025 | 12/31/2024 | Change | % Change |
|-------------------------------|-----------|------------|--------|----------|
| Funded Accounts | 552,300 | 539,110 | 13,190 | 2.4% |
| Payroll Contributing Accounts | 639,389 | 617,016 | 22,373 | 3.6% |
| Multiple Employer Accounts* | 95,844 | 92,129 | 3,715 | 4.0% |
| Self-Enrolled Funded Accounts | 2,935 | 2,804 | 131 | 4.7% |
| Effective Opt-Out Rate | 35.39% | 35.34% | 0.05% | 0.1% |

Status of Eligible Employers by Wave

| Wave (Deadline) | Employers Registered | Employers Exempted | Total Employers Responded | Total Estimated Eligible Employers | Employer Response Rate |
|----------------------|----------------------|--------------------|---------------------------|------------------------------------|------------------------|
| Prior Waves | 132,017 | 90,300 | 222,317 | 242,229 | 91.8% |
| Wave 2024 (12/31/24) | 9,825 | 10,791 | 20,616 | 43,229 | 47.7% |
| Wave 4 (12/31/25) | 11,177 | 16,347 | 27,524 | N/A | N/A |
| Total | 153,019 | 117,438 | 270,457 | 285,458 | 94.7% |

* This data point reflects the number of funded account holders associated with more than one registered employer

** Withdrawal Rate is calculated as Accounts with a full withdrawal as a percent of Payroll Contributing Accounts

Funding Amounts and Withdrawals

| Funding Amounts | 3/31/2025 | 12/31/2024 | Change | % Change |
|-------------------------------------|-----------------|-----------------|---------------|----------|
| Total Assets | \$1,169,518,207 | \$1,111,340,561 | \$58,177,646 | 5.2% |
| Average Funded Account Balance | \$2,118 | \$2,061 | \$57 | 2.8% |
| Total Contributions Amount | \$1,402,796,849 | \$1,292,695,774 | \$110,101,075 | 8.5% |
| Average Monthly Contribution Amount | \$206 | \$200 | \$6 | 3.0% |
| Median Monthly Contribution Amount | \$152 | \$150 | \$2 | 1.3% |
| Average Contribution Rate | 5.24% | 5.18% | 0.06% | 1.2% |
| Amount of Withdrawals | \$366,469,687 | \$317,207,000 | \$49,262,687 | 15.5% |
| Accounts with a Full Withdrawal | 151,072 | 139,160 | 11,912 | 8.6% |
| Accounts with a Partial Withdrawal | 26,869 | 24,342 | 2,527 | 10.4% |
| Withdrawal Rate** | 23.63% | 22.55% | 1.08% | 4.8% |

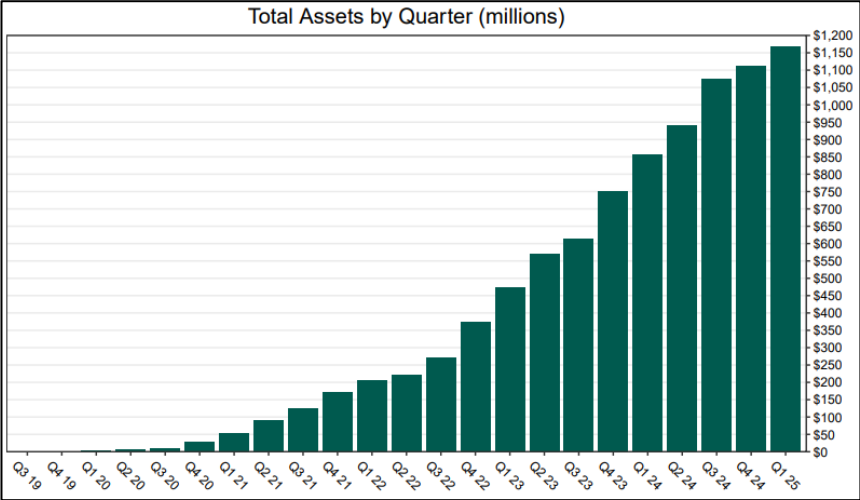
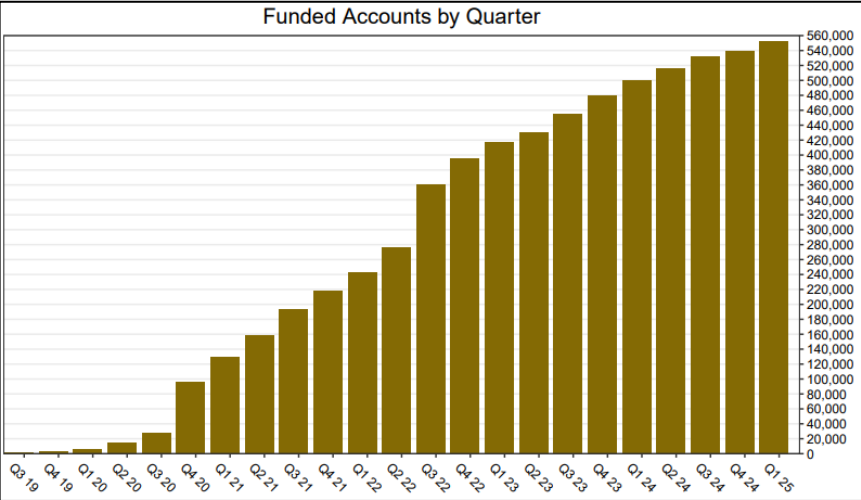
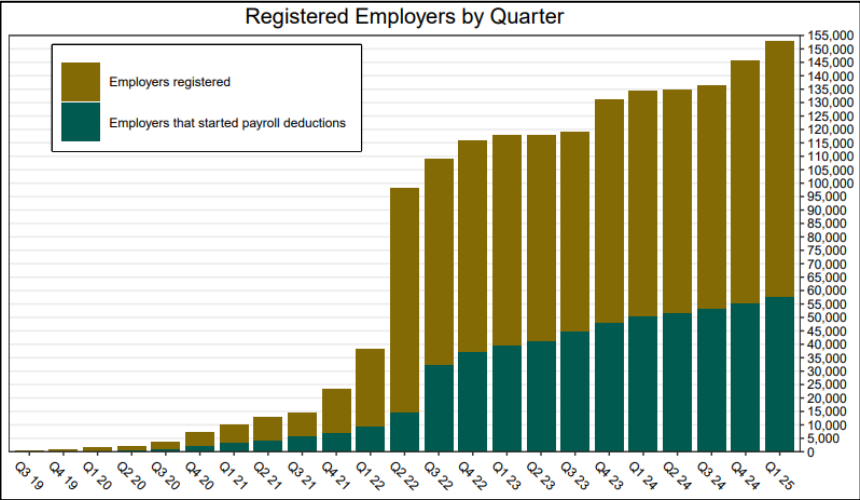
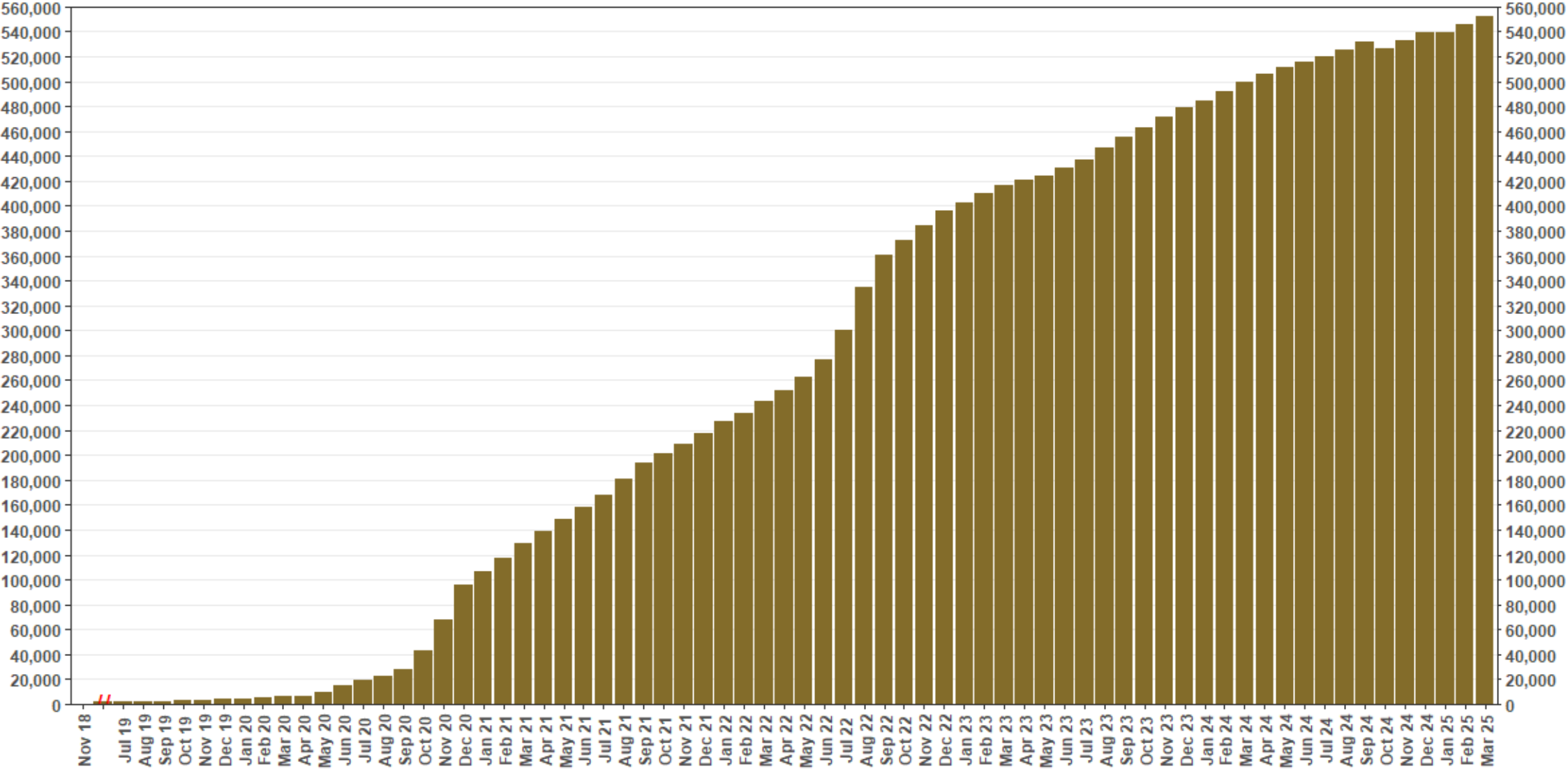


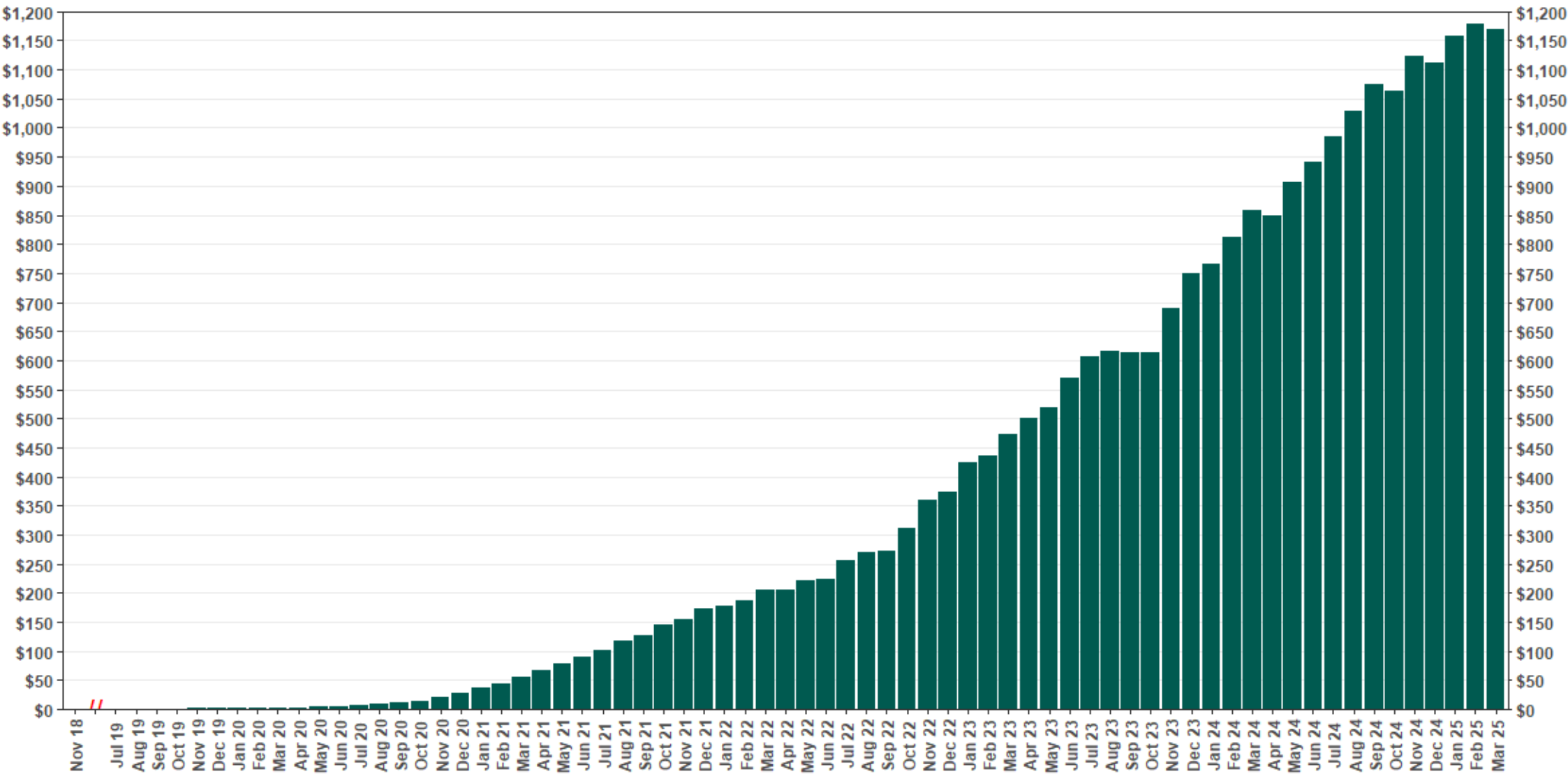
Chart 1: Funded Accounts

As of 3/31/25



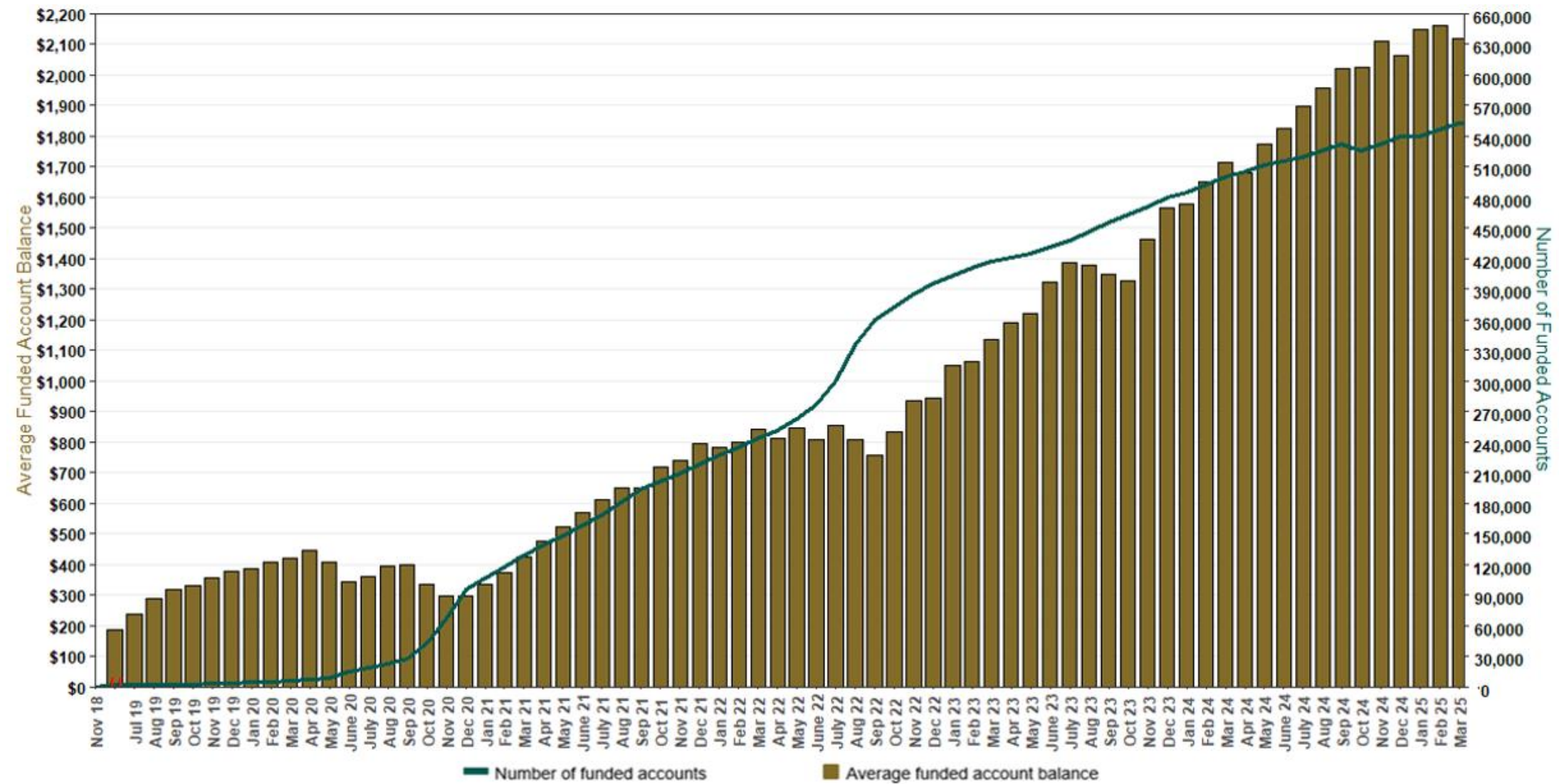
The Program operated a limited scope pilot from November 2018 through June 2019 prior to full statewide launch on July 1, 2019.

Chart 2: Total Assets (millions)
As of 3/31/25



The Program operated a limited scope pilot from November 2018 through June 2019 prior to full statewide launch on July 1, 2019.

Chart 3: Average Funded Account Balance
As of 3/31/25



The Program operated a limited scope pilot from November 2018 through June 2019 prior to full statewide launch on July 1, 2019.

Chart 4: Distribution of Accounts by Balance
As of 3/31/25

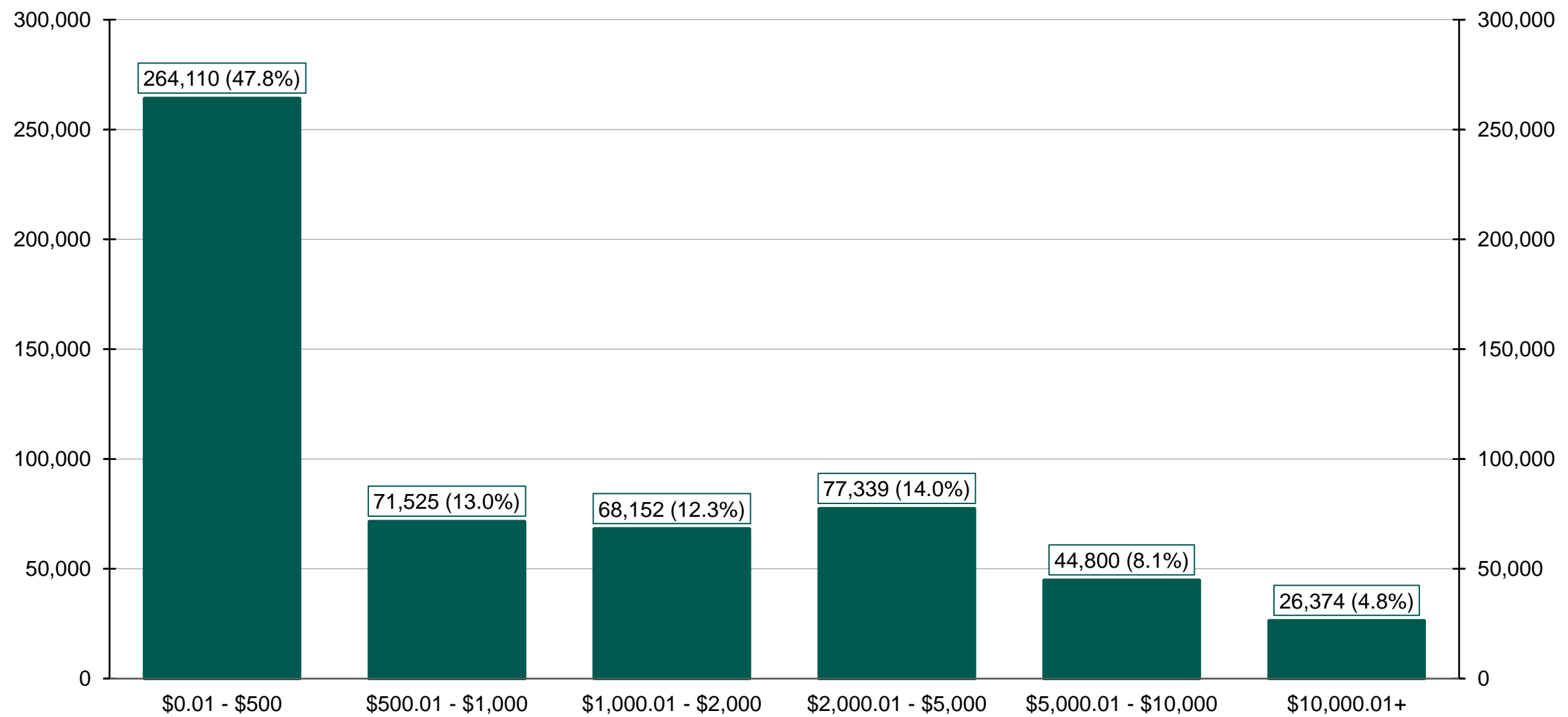
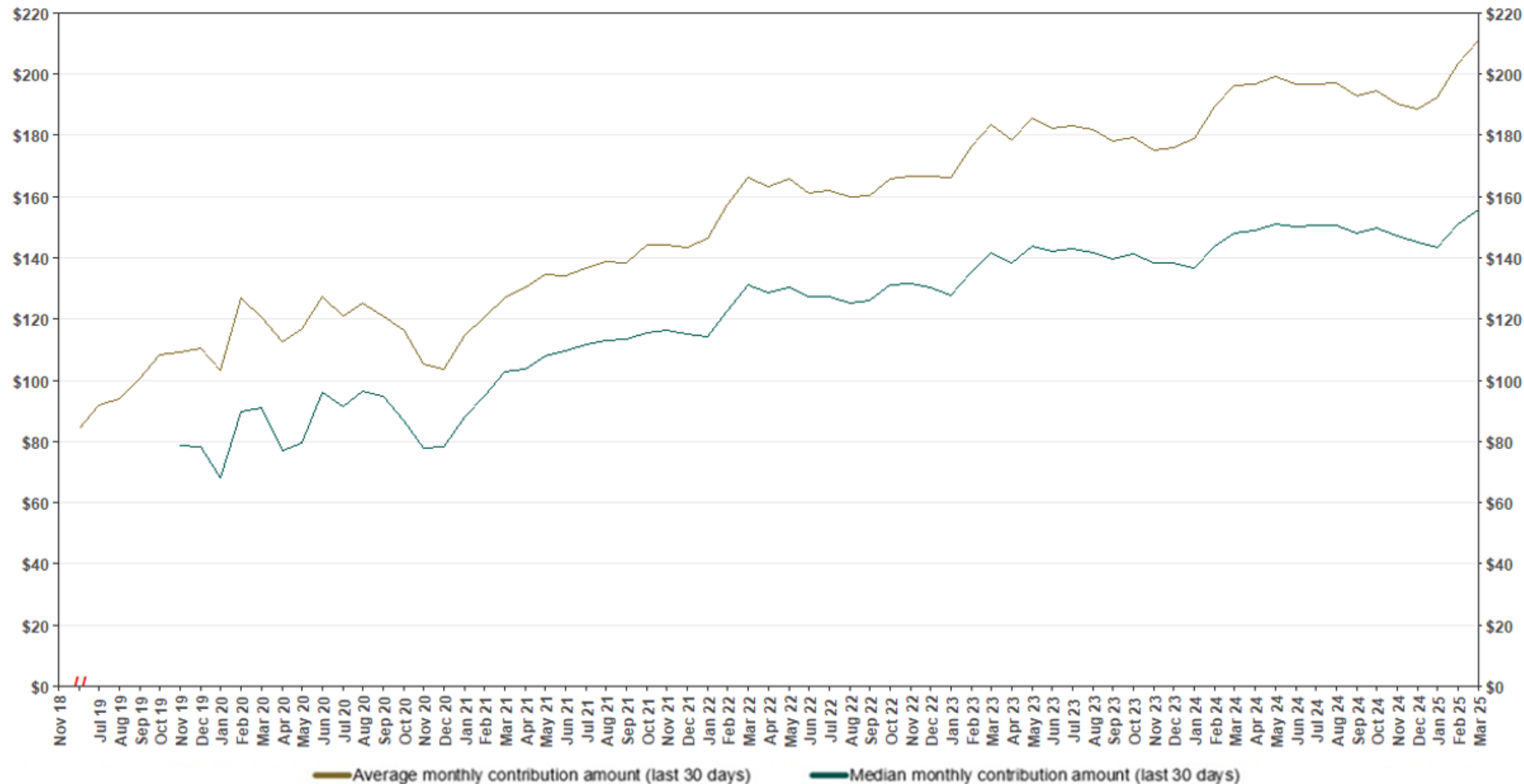
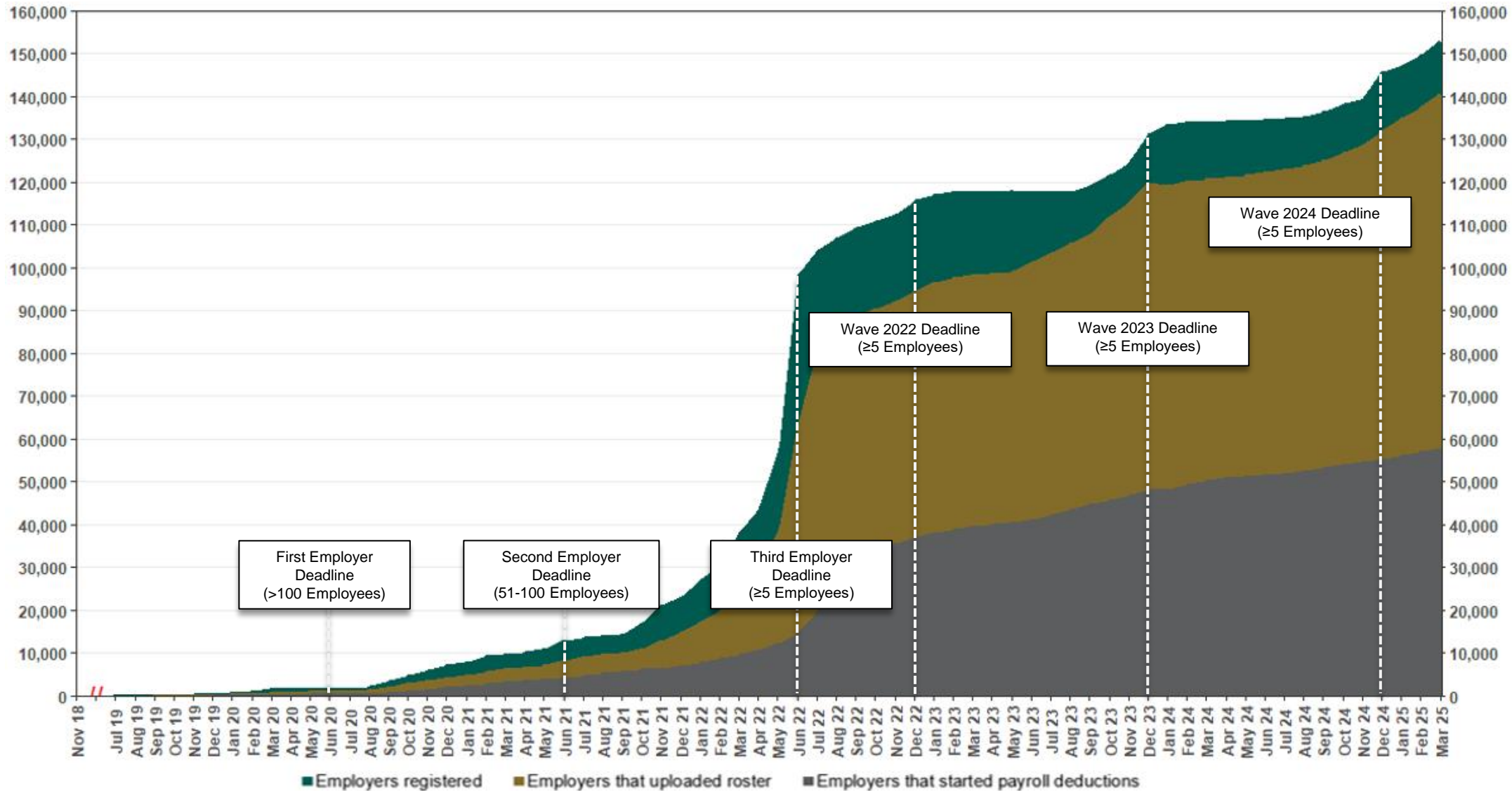


Chart 5: Monthly Contributions Per Saver
As of 3/31/25



The Program operated a limited scope pilot from November 2018 through June 2019 prior to full statewide launch on July 1, 2019.

Chart 6: Status of All Registered Employers
As of 3/31/25



The Program operated a limited scope pilot from November 2018 through June 2019 prior to full statewide launch on July 1, 2019.

Chart 7: Status of Post-Deadline Employers

As of 3/31/25

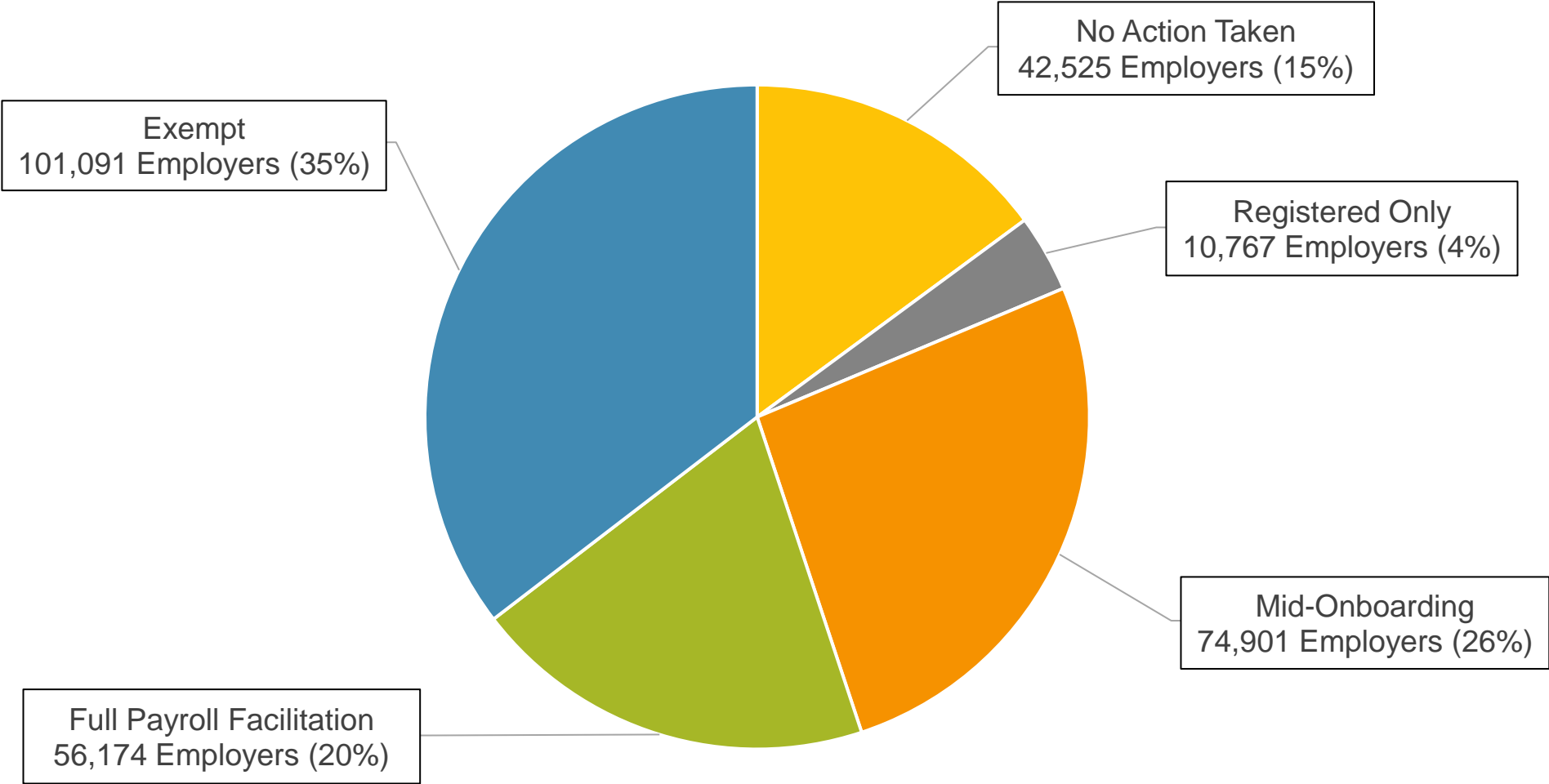
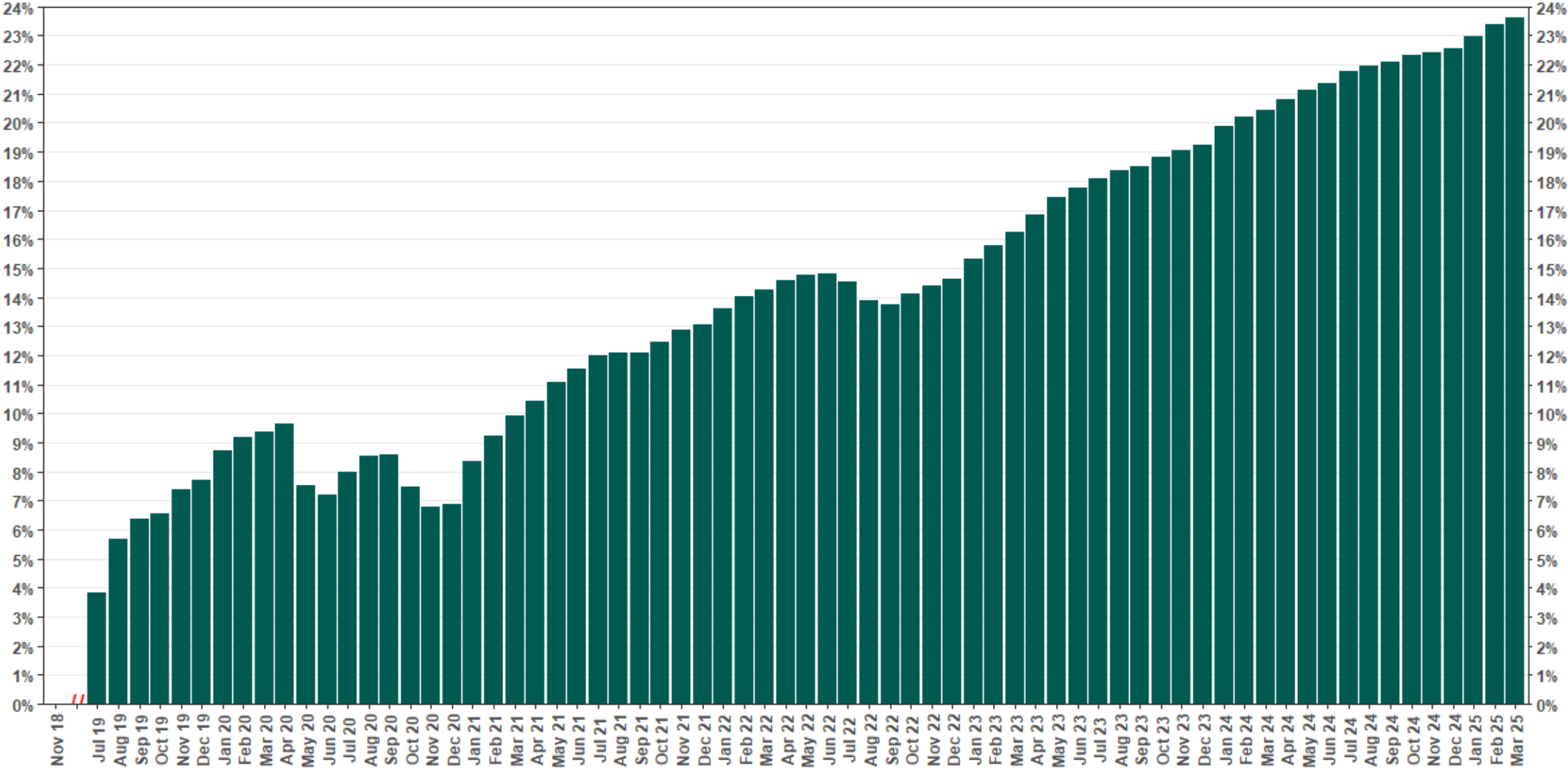


Chart 8: Accounts w/ Full Withdrawal as % of Payroll Contributing Accounts
As of 3/31/25



The Program operated a limited scope pilot from November 2018 through June 2019 prior to full statewide launch on July 1, 2019.