



CalSavers Retirement Savings Program  
Participation & Funding Snapshot as of 8/31/2024

Employer Registration Status Changes

Employer Status	8/31/2024	5/31/2024	Change	% Change
Registered	135,202	134,337	865	0.64%
Uploaded Roster	123,834	121,656	2,178	1.79%
Started Payroll Deductions	52,573	51,395	1,178	2.29%
Facilitated Deductions in last 90 days	38,368	38,766	-398	-1.03%
Exempt	131,573	129,092	2,481	1.92%

Participant Savings and Enrollment Changes

Participant Account Status	8/31/2024	5/31/2024	Change	% Change
Funded Accounts	525,616	511,387	14,229	2.78%
Payroll Contributing Accounts	586,353	569,213	17,140	3.01%
Multiple Employer Accounts*	85,423	81,672	3,751	4.59%
Self-Enrolled Funded Accounts	2,695	2,526	169	6.69%
Effective Opt-Out Rate	35.93%	36.13%	-0.21%	-0.57%

Status of Eligible Employers by Wave

Wave (Deadline)	Employers Registered	Employers Exempted	Total Employers Responded	Total Estimated Eligible Employers	Employer Response Rate
Post-Deadline Employers	131,805	121,515	253,320	281,801	89.9%
Wave 2024 (12/31/24)	45	3	48	N/A	N/A
Wave 4 (12/31/25)	3,352	10,055	13,407	N/A	N/A
Total	135,202	131,573	266,775	281,801	94.7%

\* This data point reflects the number of funded account holders associated with more than one registered employer  
\*\* Withdrawal Rate is calculated as Accounts with a full withdrawal as a percent of Payroll Contributing Accounts

Funding Amounts and Withdrawals

Funding Amounts	8/31/2024	5/31/2024	Change	% Change
Total Assets	\$1,029,472,426.28	\$907,415,314.65	\$122,057,111.63	13.45%
Average Funded Account Balance	\$1,959	\$1,774	\$184	10.38%
Total Contributions Amount	\$1,153,979,878	\$1,046,809,093	\$107,170,785	10.24%
Average Monthly Contribution Amount	\$197	\$202	-\$5	-2.54%
Median Monthly Contribution Amount	\$151	\$153	-\$2	-1.23%
Average Contribution Rate	5.20%	5.21%	-0.01%	-0.21%
Amount of Withdrawals	\$266,963,635	\$229,212,178	\$37,751,457	16.47%
Accounts with a Full Withdrawal	128,848	120,296	8,552	7.11%
Accounts with a Partial Withdrawal	21,283	18,873	2,410	12.77%
Withdrawal Rate**	21.97%	21.13%	0.84%	3.98%

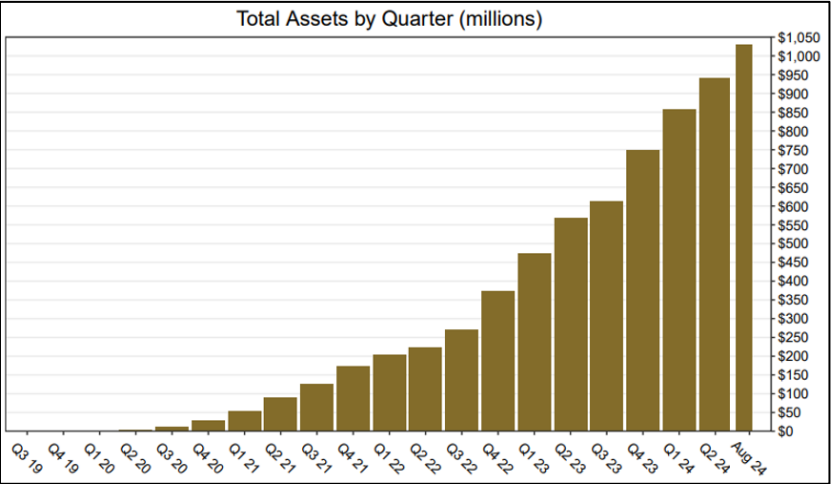
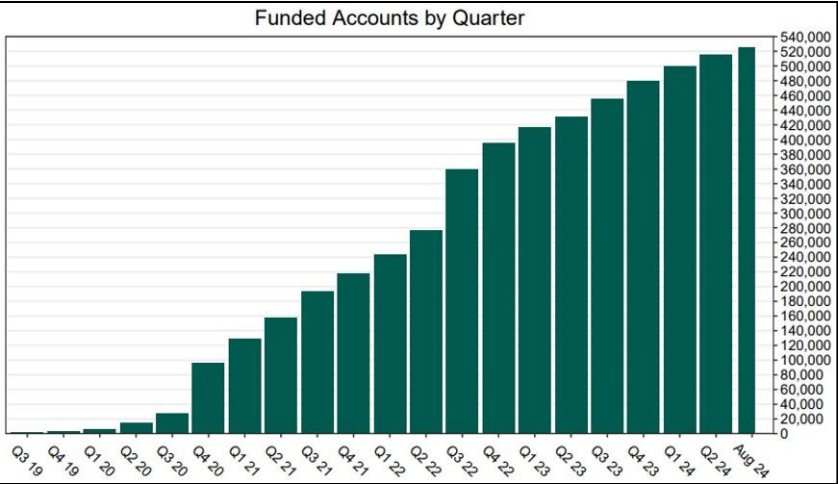
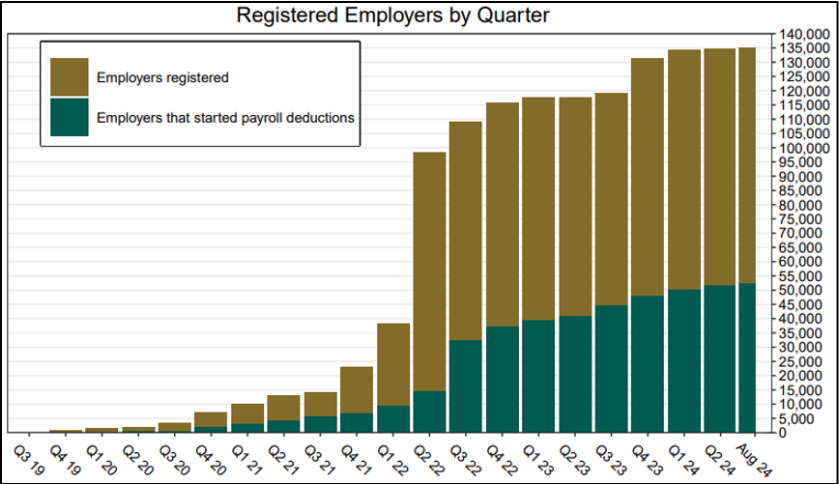
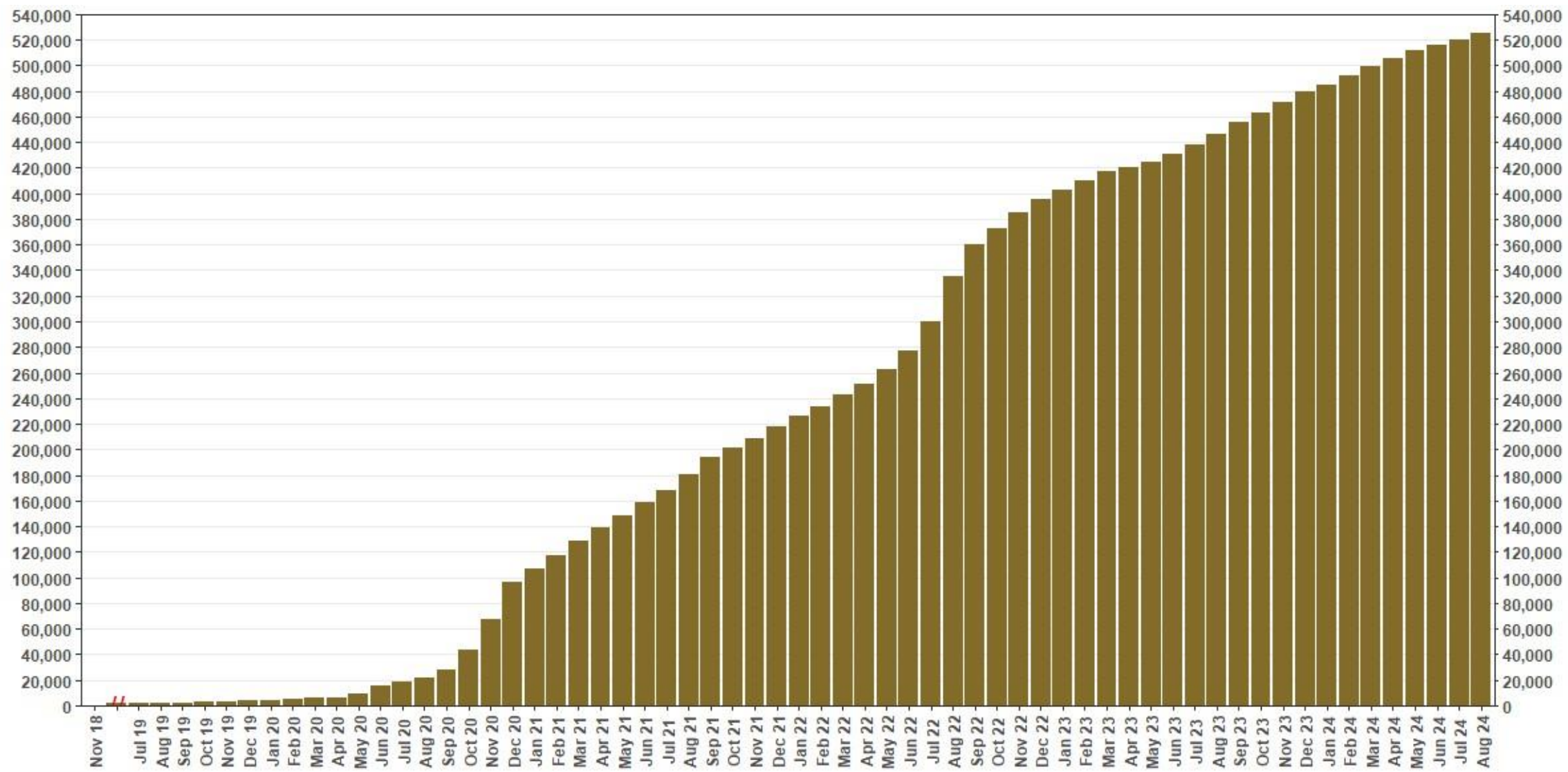
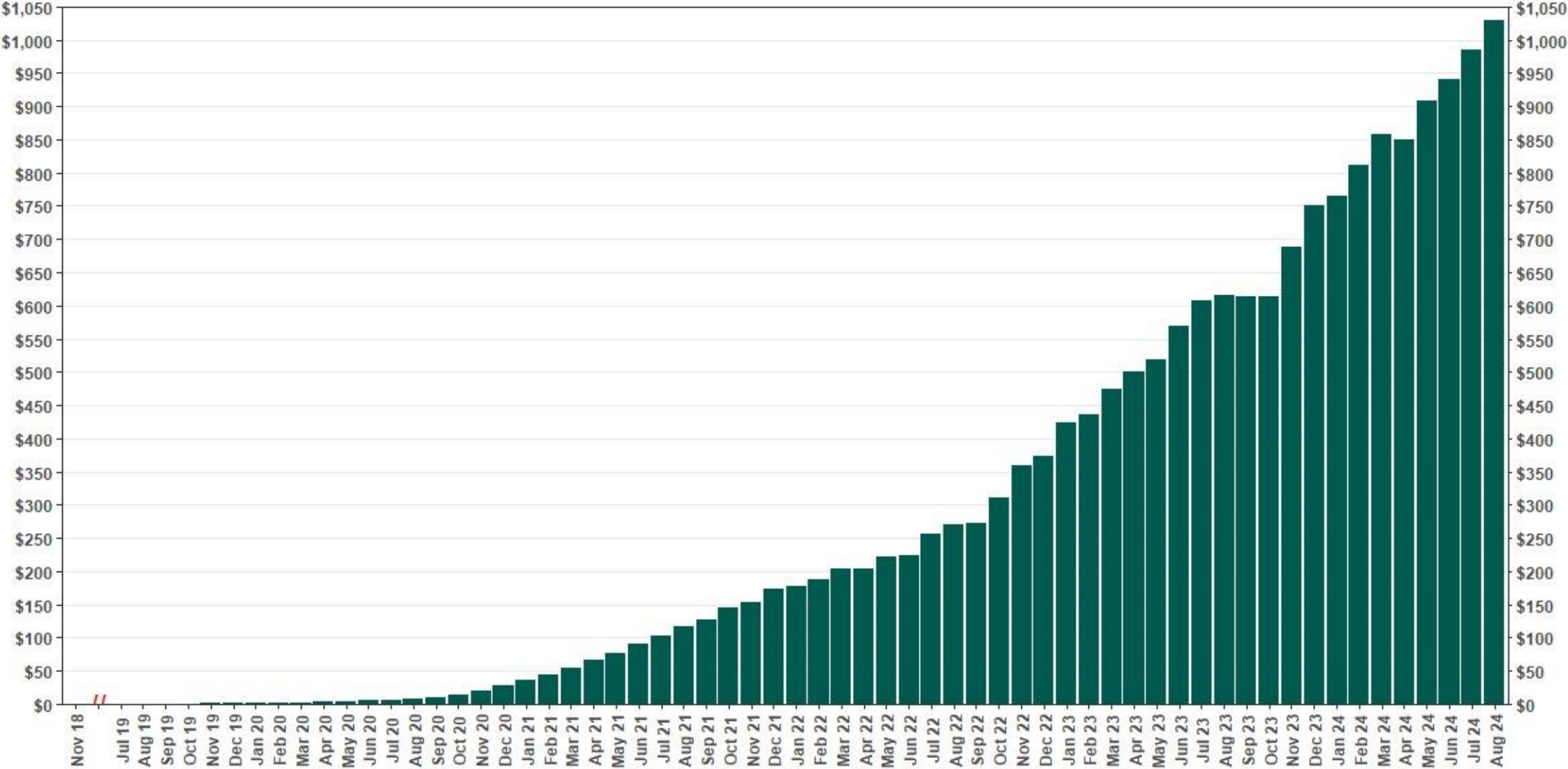


Chart 1: Funded Accounts  
As of 8/31/24



The Program operated a limited scope pilot from November 2018 through June 2019 prior to full statewide launch on July 1, 2019.

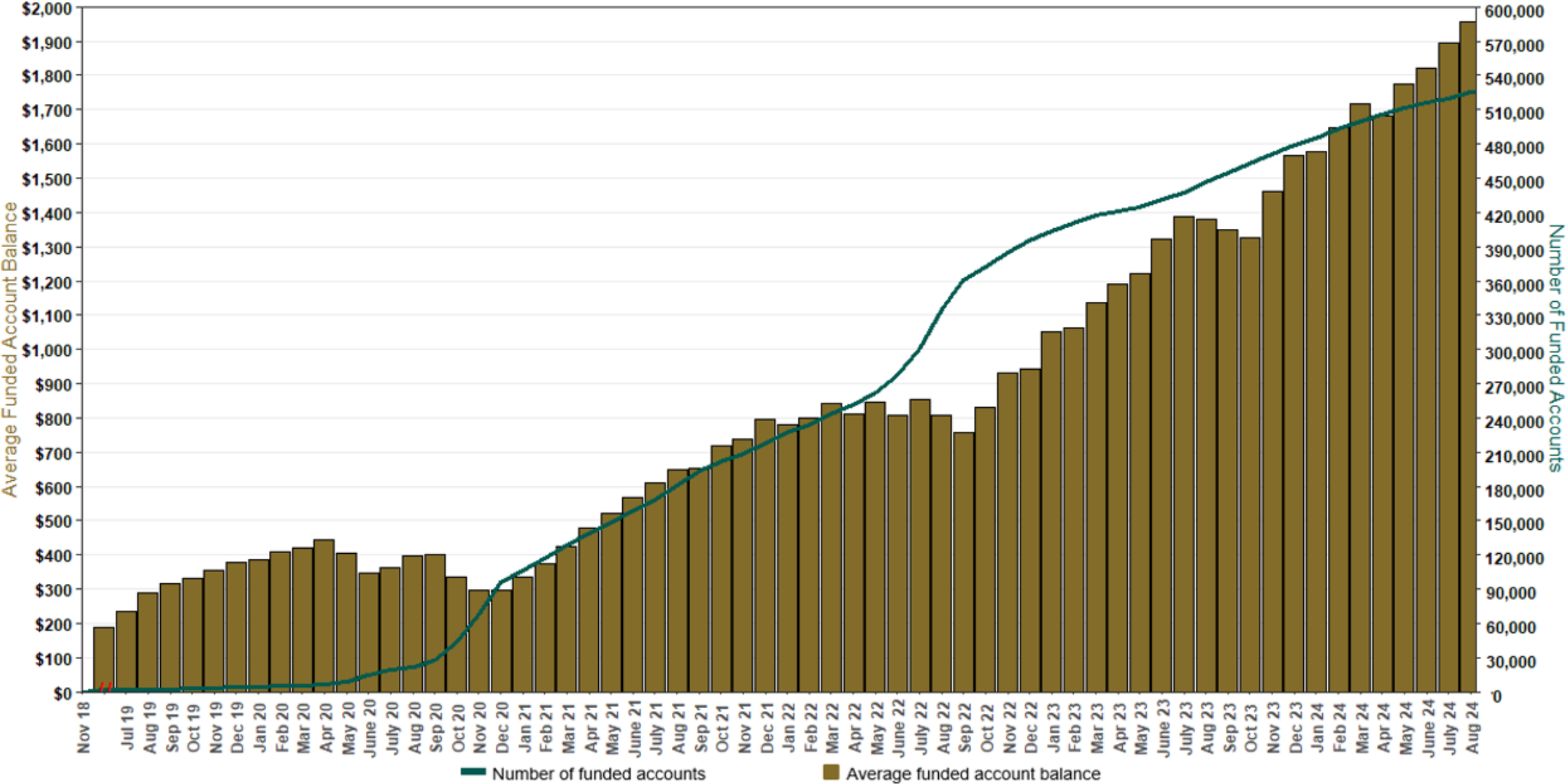
Chart 2: Total Assets (millions)  
As of 8/31/24



The Program operated a limited scope pilot from November 2018 through June 2019 prior to full statewide launch on July 1, 2019.

# Chart 3: Average Funded Account Balance

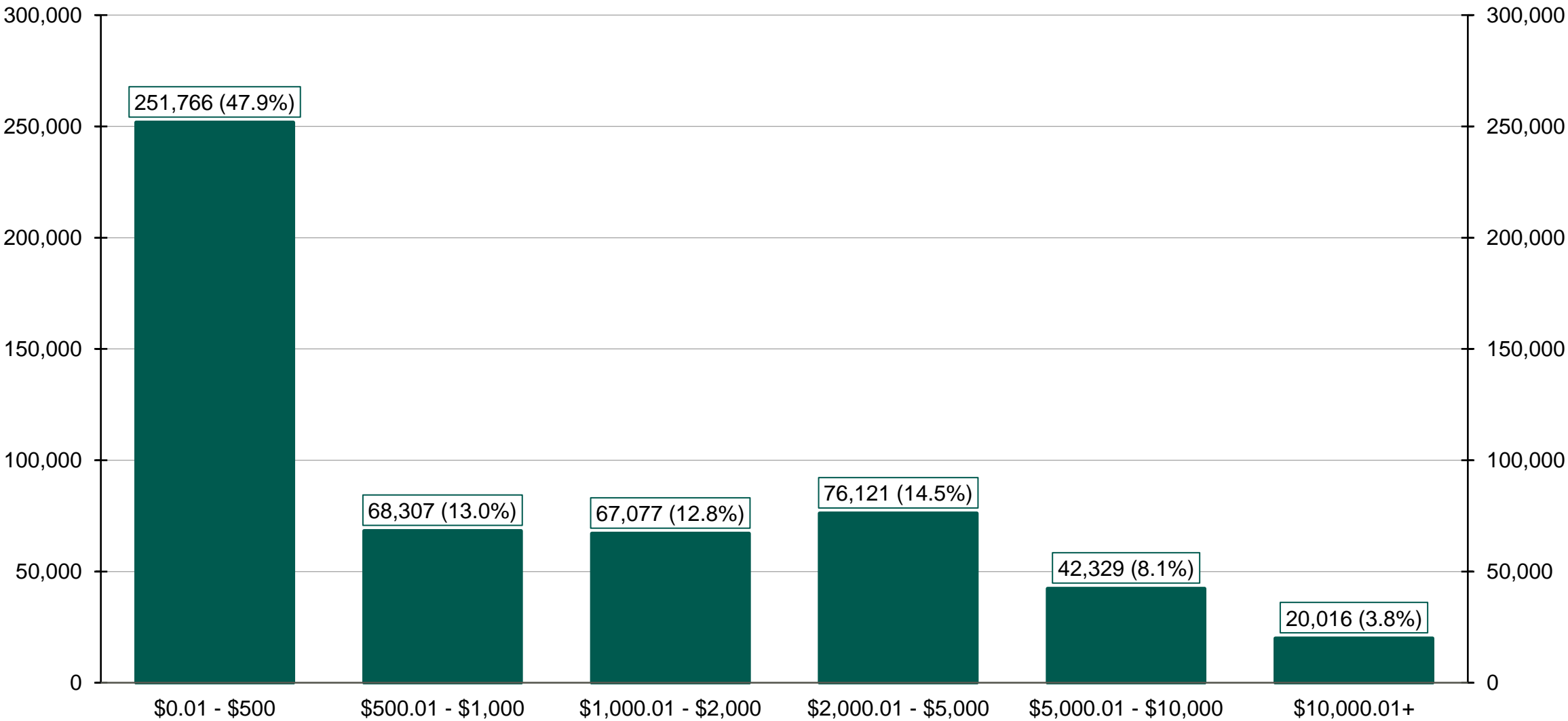
As of 8/31/24



The Program operated a limited scope pilot from November 2018 through June 2019 prior to full statewide launch on July 1, 2019.

# Chart 4: Distribution of Accounts by Balance

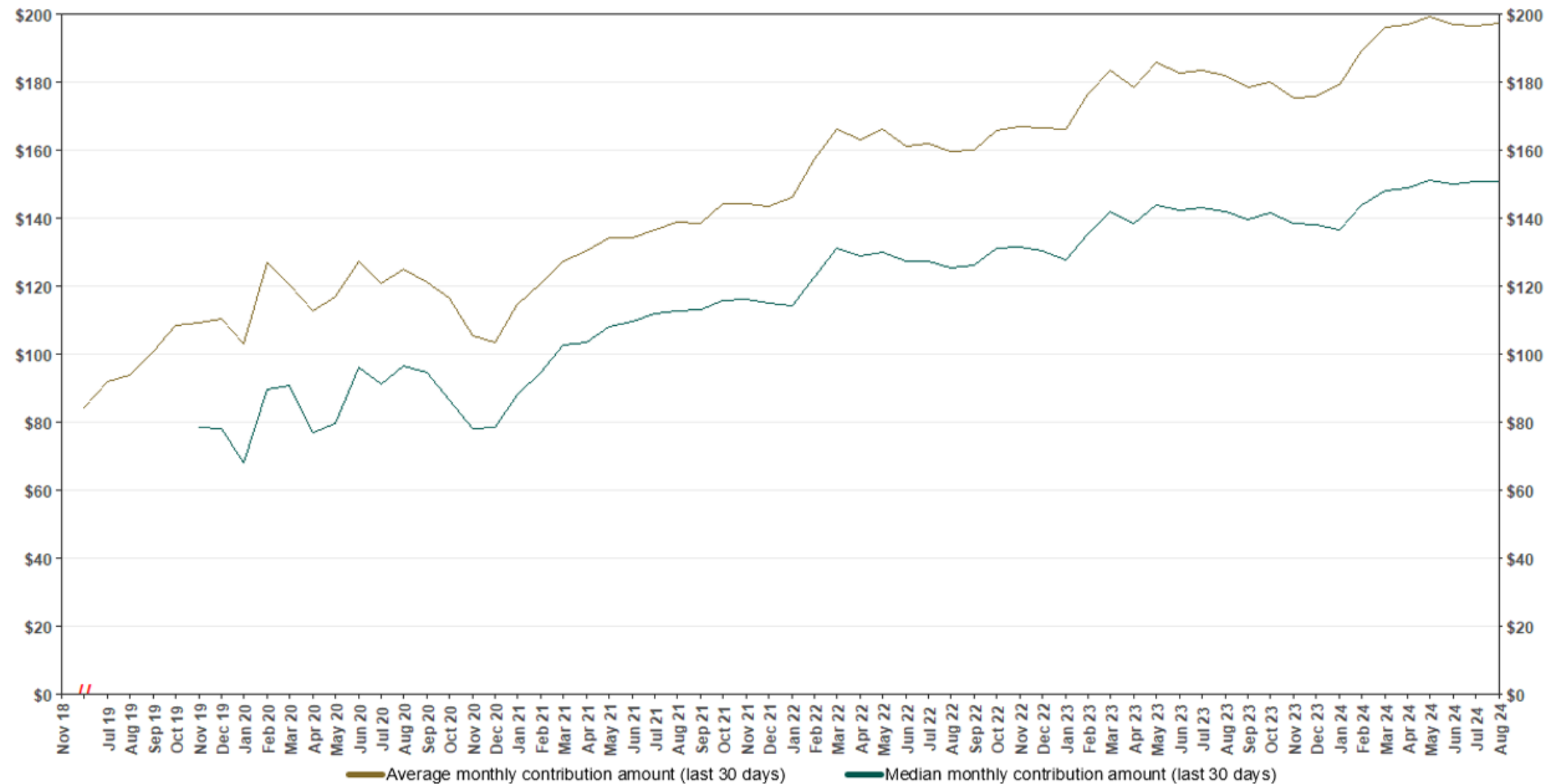
As of 8/31/24





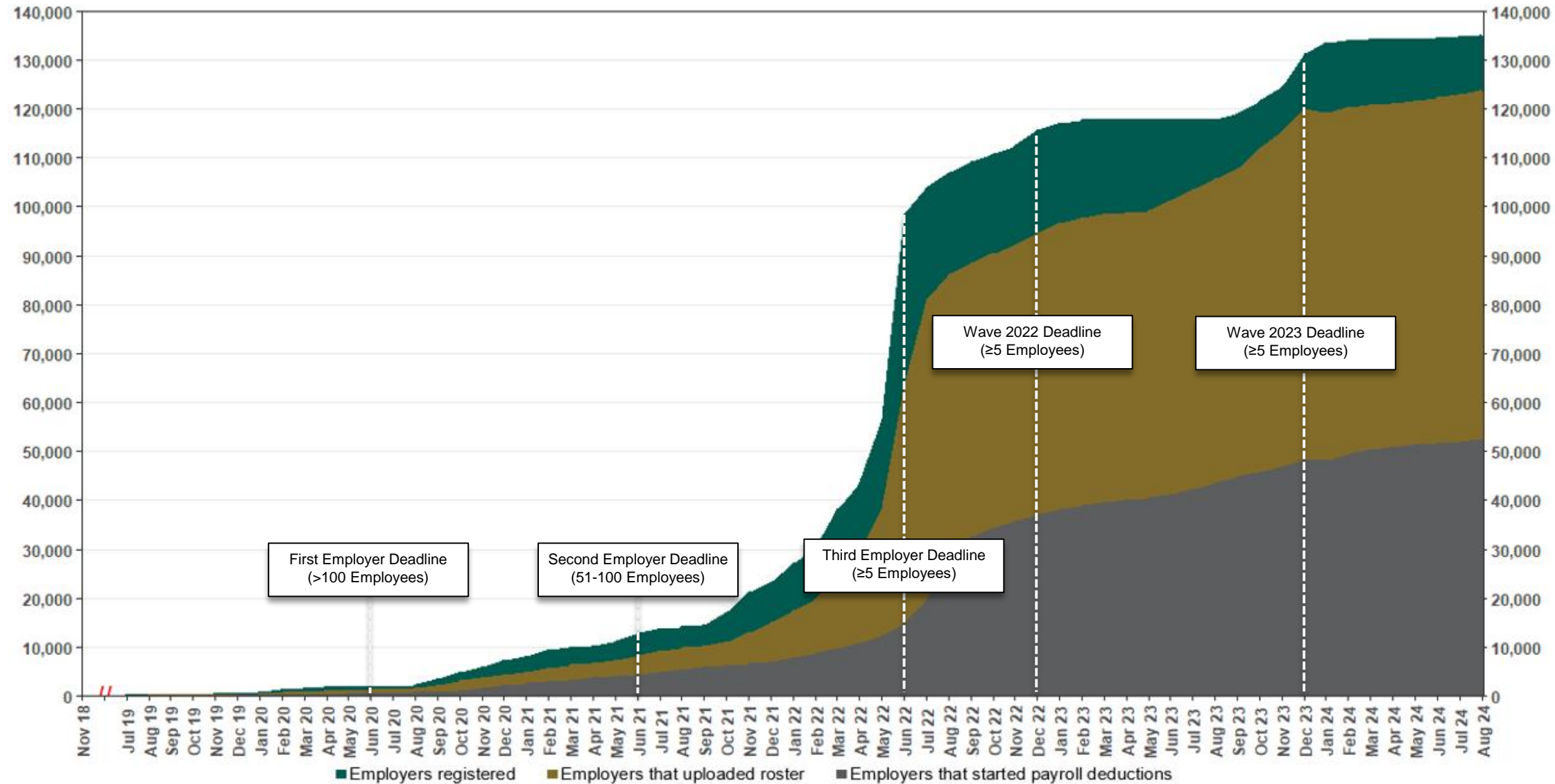
# Chart 5: Monthly Contributions Per Saver

As of 8/31/24



The Program operated a limited scope pilot from November 2018 through June 2019 prior to full statewide launch on July 1, 2019.

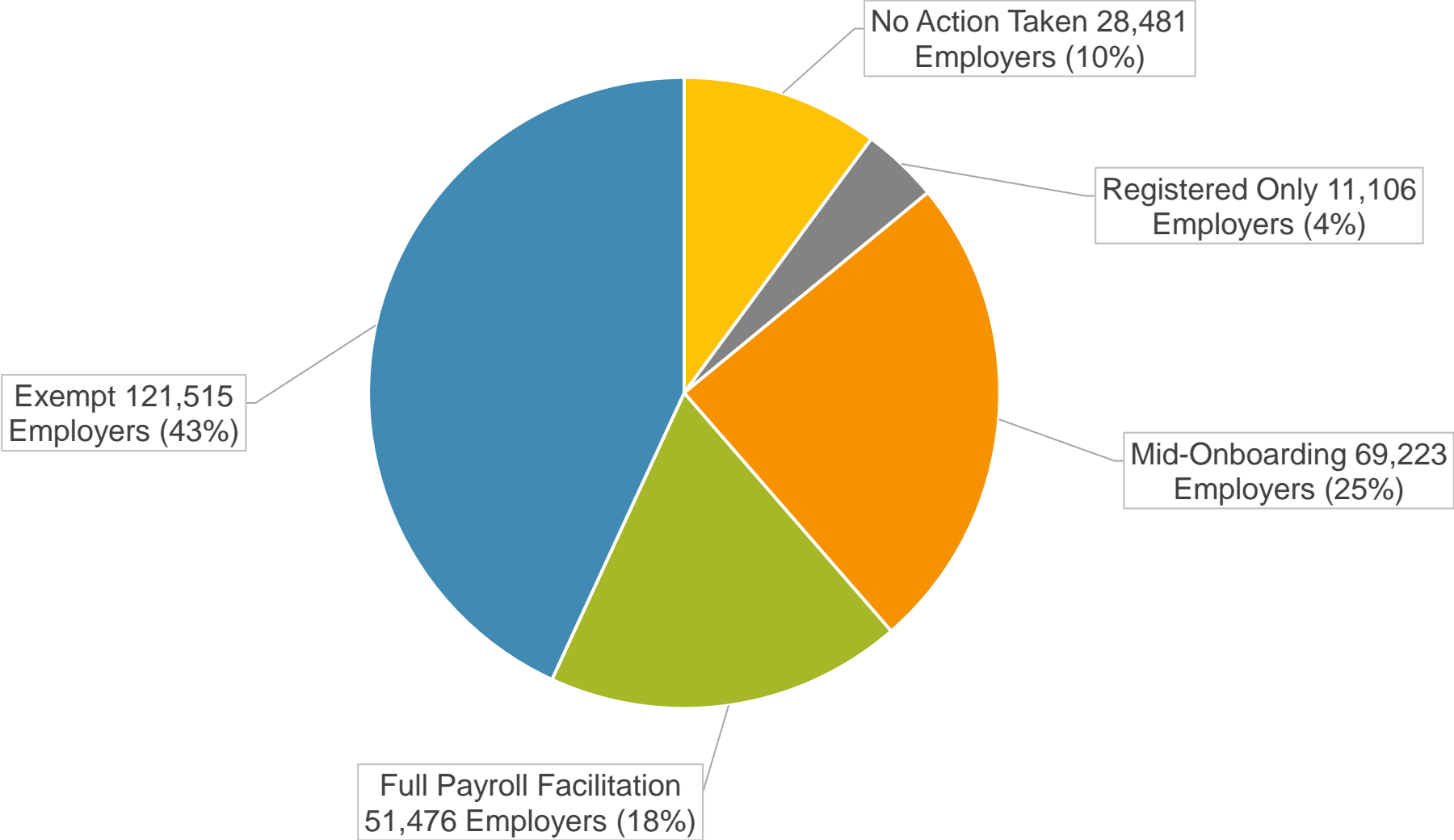
Chart 6: Status of All Registered Employers  
As of 8/31/24



The Program operated a limited scope pilot from November 2018 through June 2019 prior to full statewide launch on July 1, 2019.

# Chart 7: Status of Post-Deadline Employers

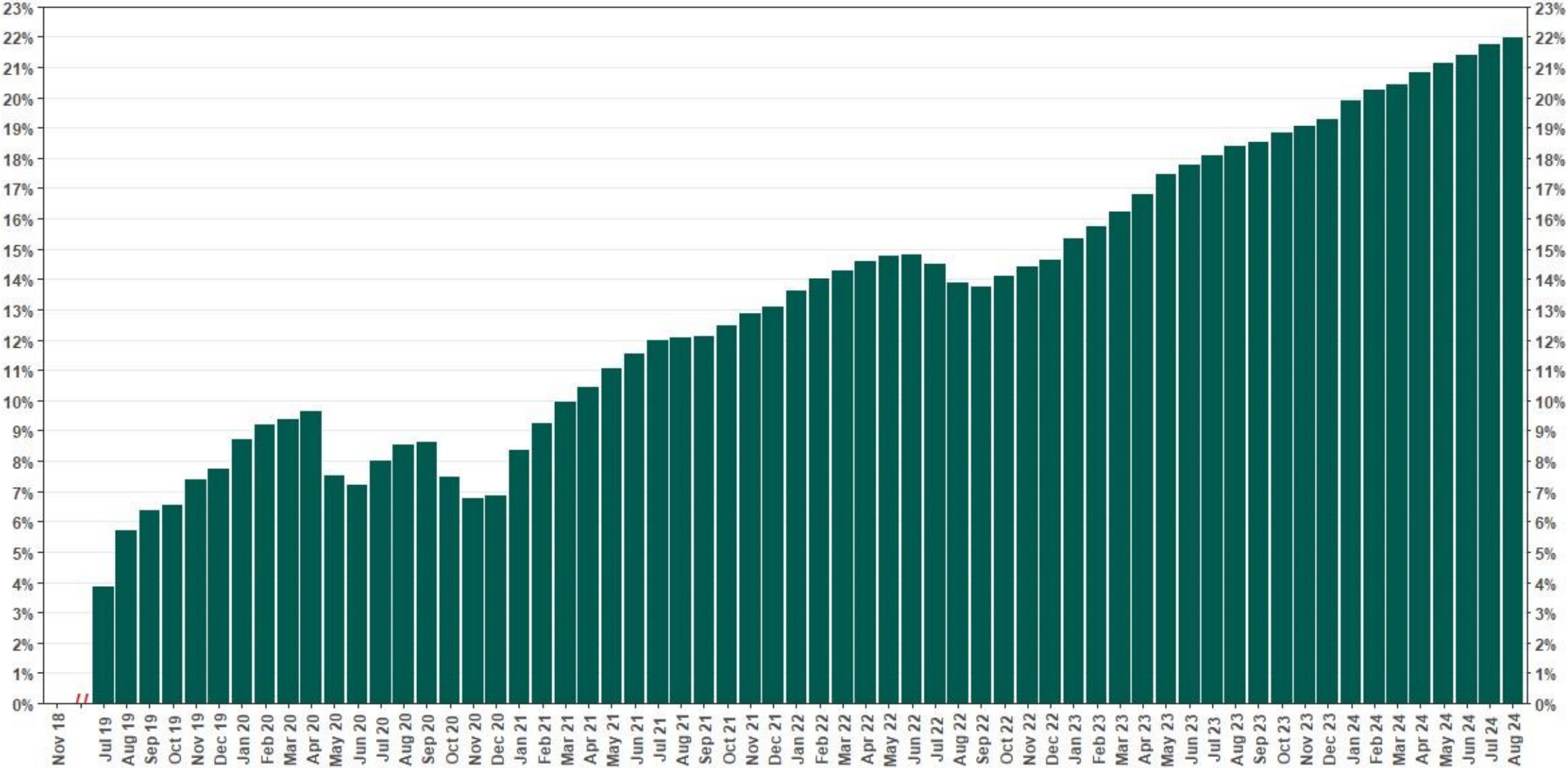
As of 8/31/24





# Chart 8: Accounts w/ Full Withdrawal as % of Payroll Contributing Accounts

As of 8/31/24



The Program operated a limited scope pilot from November 2018 through June 2019 prior to full statewide launch on July 1, 2019.