



CalSavers Retirement Savings Program
Participation & Funding Snapshot as of 7/31/2024

www.treasurer.ca.gov/calsavers/reports/2024

Employer Registration Status Changes

Employer Status	7/31/2024	4/30/2024	Change	% Change
Registered	134,862	134,255	607	0.5%
Uploaded Roster	122,946	121,139	1,807	1.5%
Started Payroll Deductions	51,988	50,943	1,045	2.1%
Facilitated Deductions in last 90 days	38,290	38,917	-627	-1.6%
Exempt	130,480	128,557	1,923	1.5%

Participant Savings and Enrollment Changes

Participant Account Status	7/31/2024	4/30/2024	Change	% Change
Funded Accounts	519,562	505,283	14,279	2.8%
Payroll Contributing Accounts	580,110	561,233	18,877	3.4%
Multiple Employer Accounts*	83,572	79,821	3,751	4.7%
Self-Enrolled Funded Accounts	2,638	2,430	208	8.6%
Effective Opt-Out Rate	35.91%	36.25%	-0.34%	-0.9%

Status of Eligible Employers by Wave

Wave (Deadline)	Employers Registered	Employers Exempted	Total Employers Responded	Total Estimated Eligible Employers	Employer Response Rate
Post-Deadline Employers	131,710	120,639	252,349	281,800	89.5%
Wave 2024 (12/31/24)	39	3	42	N/A	N/A
Wave 4 (12/31/25)	3,113	9,838	12,951	N/A	N/A
Total	134,862	130,480	265,342	281,800	94.2%

* This data point reflects the number of funded account holders associated with more than one registered employer

** Withdrawal Rate is calculated as Accounts with a full withdrawal as a percent of Payroll Contributing Accounts

Funding Amounts and Withdrawals

Funding Amounts	7/31/2024	4/30/2024	Change	% Change
Total Assets	\$984,708,724	\$858,491,021	\$126,217,703	14.7%
Average Funded Account Balance	\$1,895	\$1,699	\$196	11.5%
Total Contributions Amount	\$1,117,951,576	\$1,005,872,133	\$112,079,443	11.1%
Average Monthly Contribution Amount	\$198	\$204	-\$6	-2.9%
Median Monthly Contribution Amount	\$152	\$154	-\$2	-1.3%
Average Contribution Rate	5.20%	5.21%	-0.01%	-0.2%
Amount of Withdrawals	\$255,013,234	\$215,550,896	\$39,462,338	18.3%
Accounts with a Full Withdrawal	126,223	116,778	9,445	8.1%
Accounts with a Partial Withdrawal	20,519	17,998	2,521	14.0%
Withdrawal Rate**	21.76%	20.81%	0.95%	4.6%

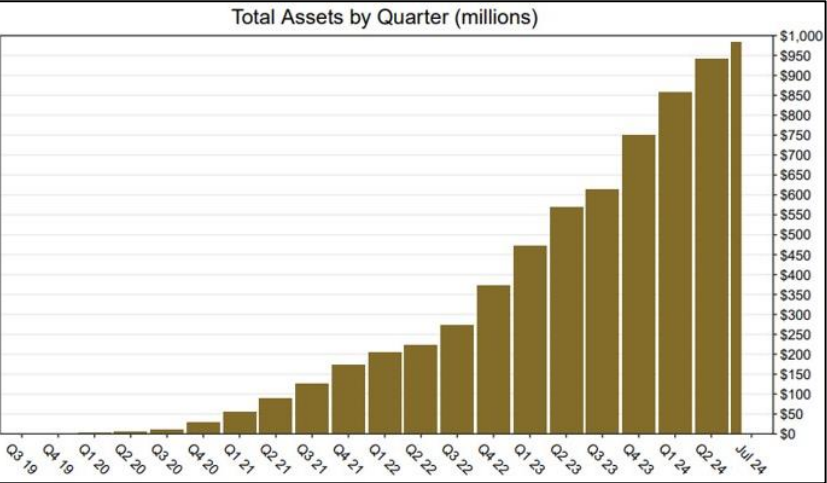
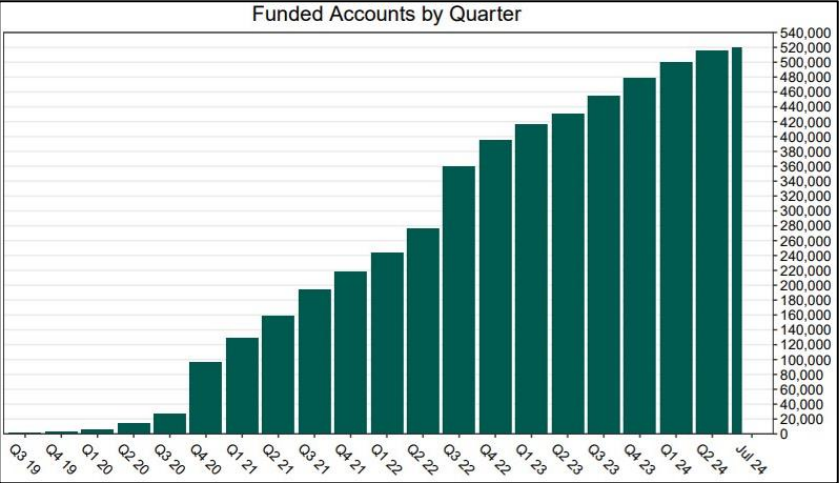
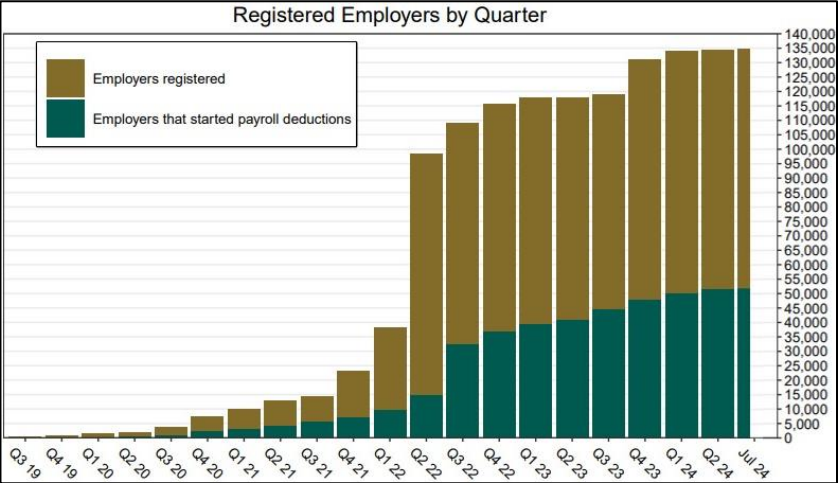
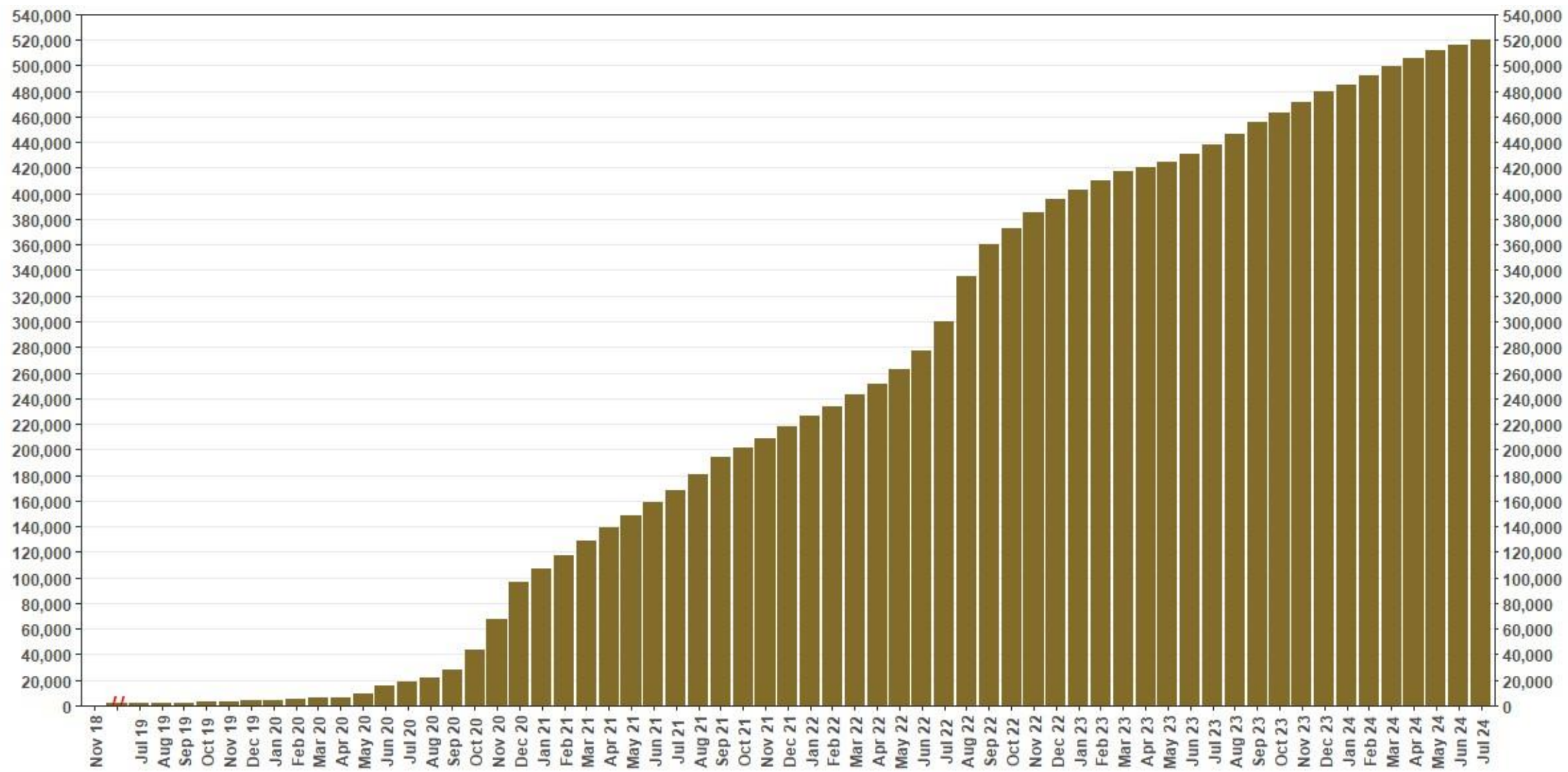


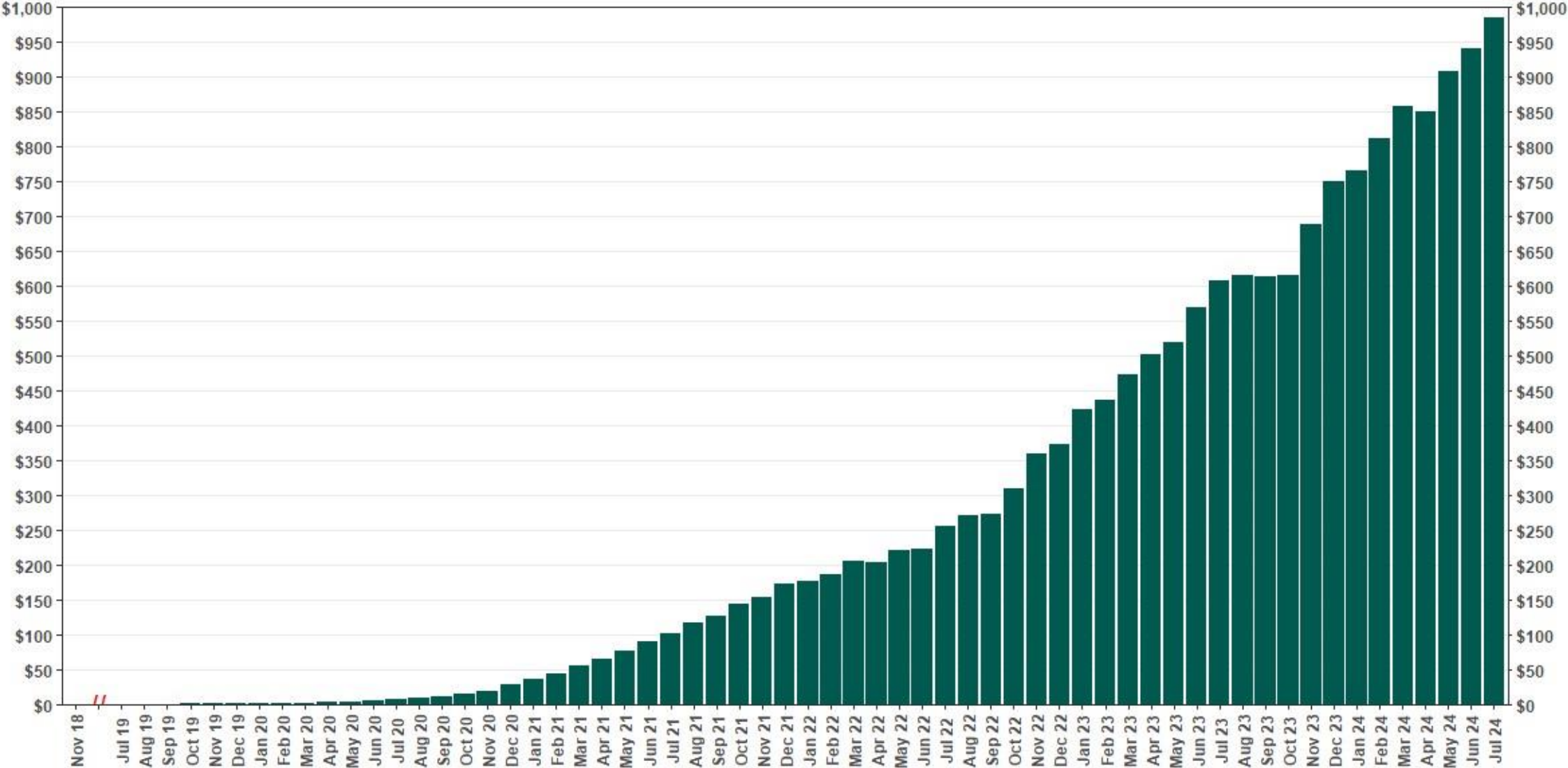
Chart 1: Funded Accounts

As of 7/31/24



The Program operated a limited scope pilot from November 2018 through June 2019 prior to full statewide launch on July 1, 2019.

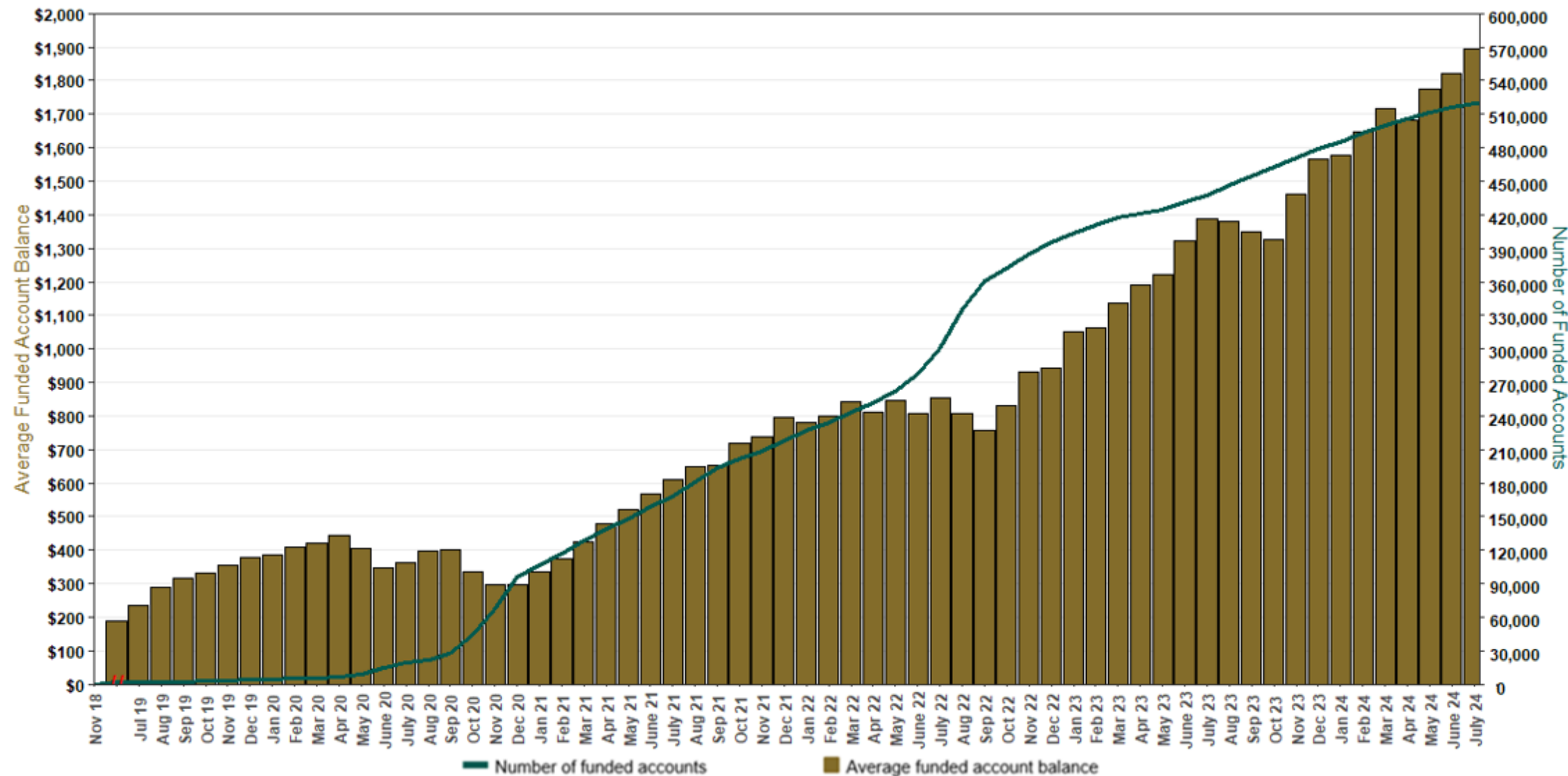
Chart 2: Total Assets (millions)
As of 7/31/24



The Program operated a limited scope pilot from November 2018 through June 2019 prior to full statewide launch on July 1, 2019.

Chart 3: Average Funded Account Balance

As of 7/31/24



The Program operated a limited scope pilot from November 2018 through June 2019 prior to full statewide launch on July 1, 2019.

Chart 4: Distribution of Accounts by Balance

As of 7/31/24

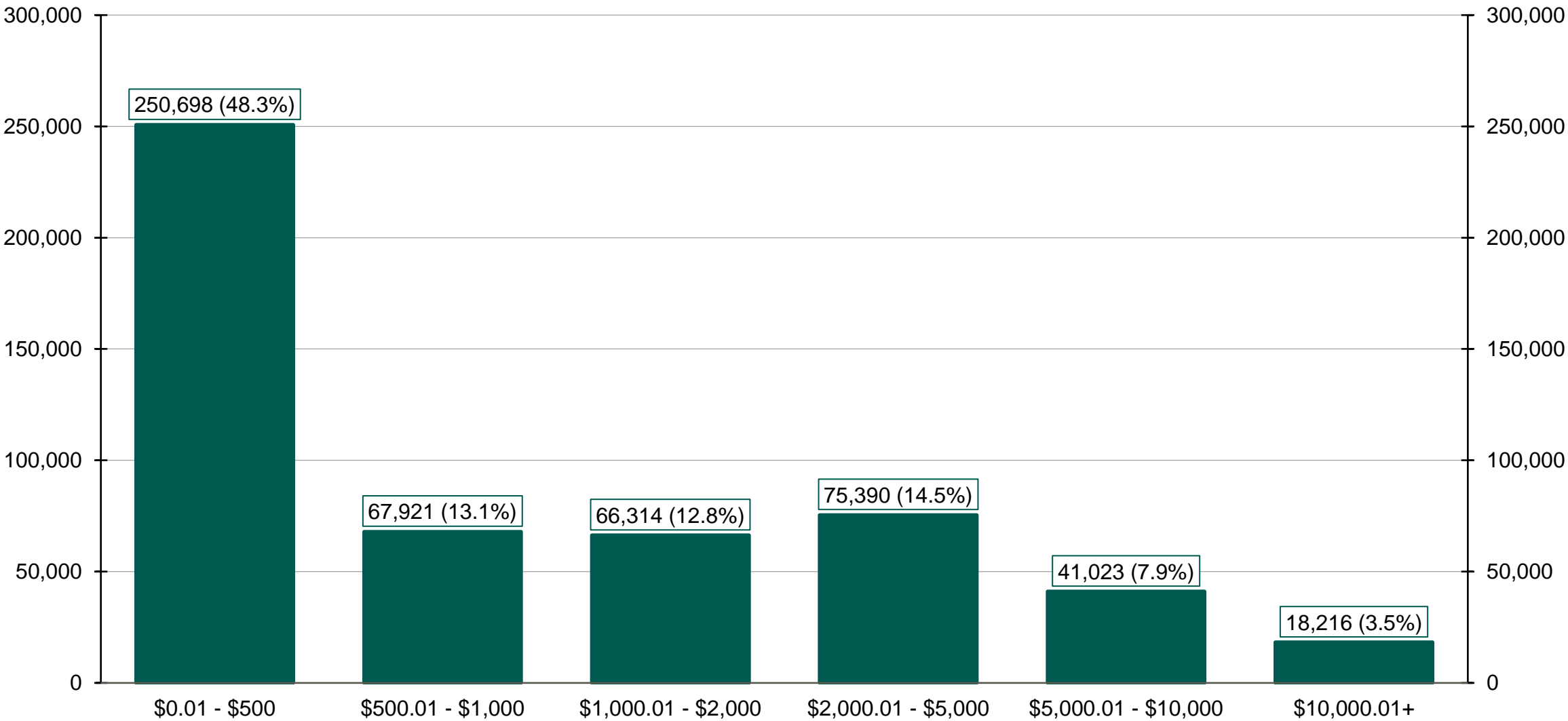
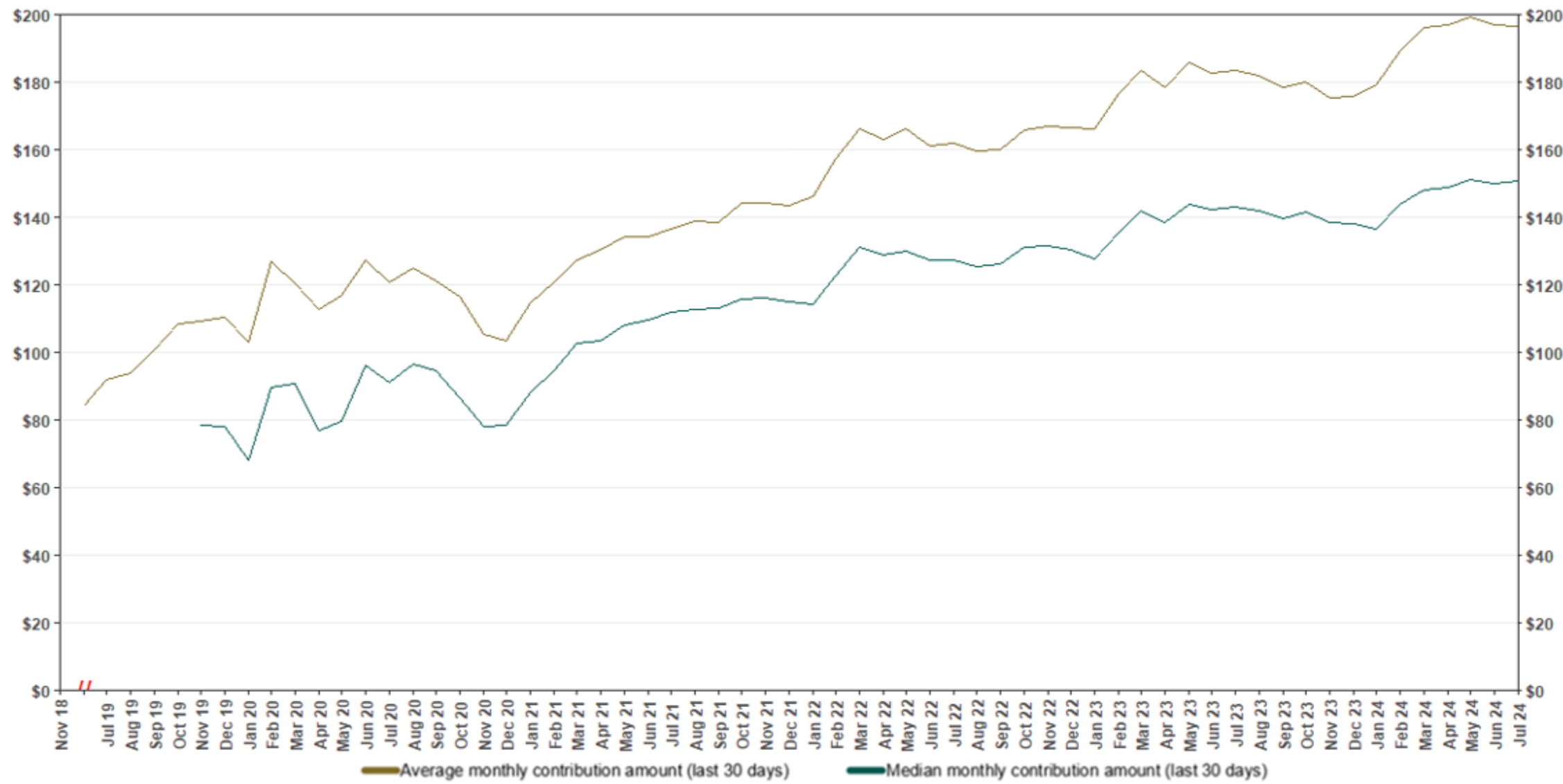
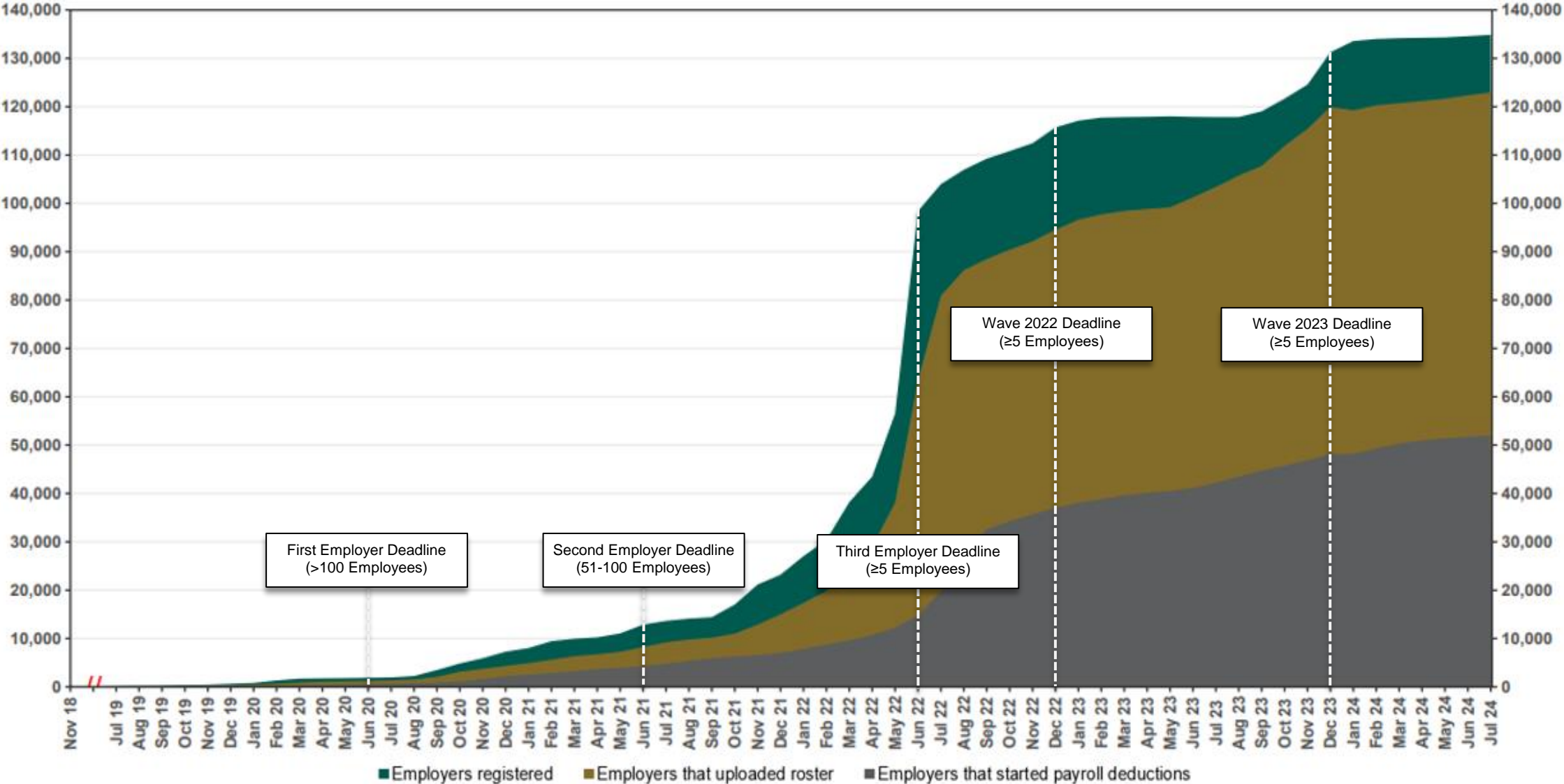


Chart 5: Monthly Contributions Per Saver
As of 7/31/24



The Program operated a limited scope pilot from November 2018 through June 2019 prior to full statewide launch on July 1, 2019.

Chart 6: Status of All Registered Employers
As of 7/31/24



The Program operated a limited scope pilot from November 2018 through June 2019 prior to full statewide launch on July 1, 2019.

Chart 7: Status of Post-Deadline Employers

As of 7/31/24

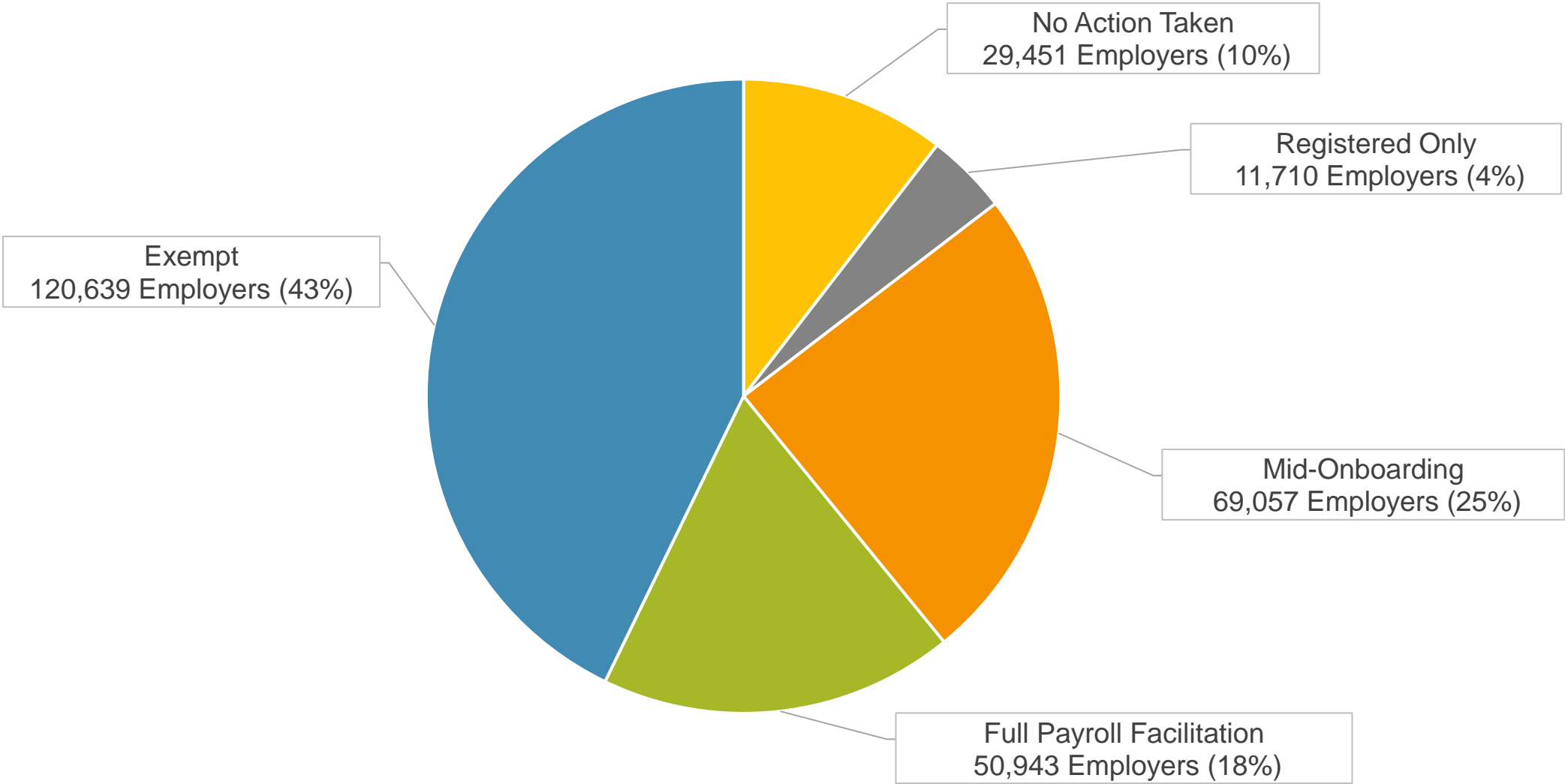
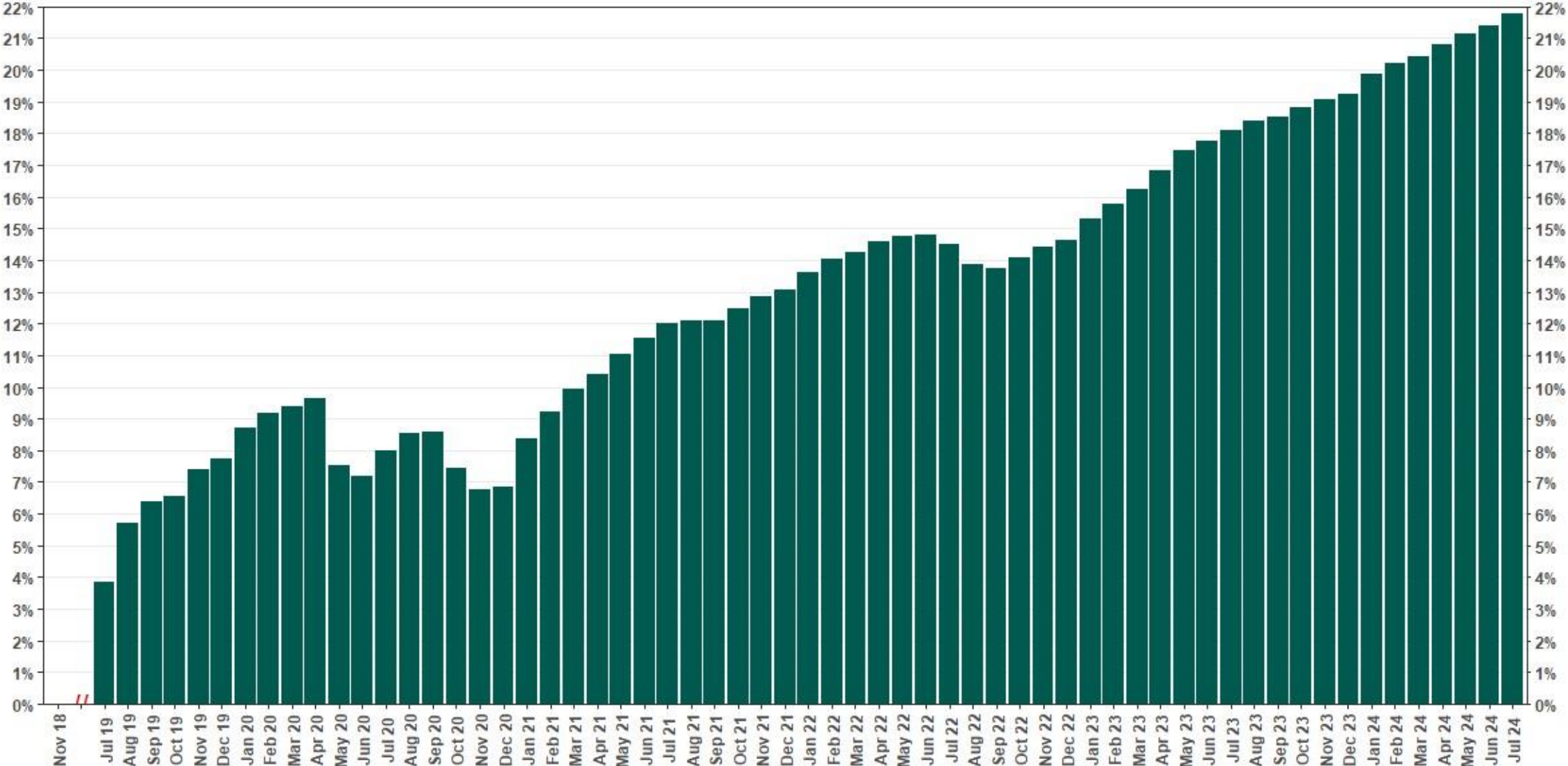


Chart 8: Accounts w/ Full Withdrawal as % of Payroll Contributing Accounts
As of 7/31/24



The Program operated a limited scope pilot from November 2018 through June 2019 prior to full statewide launch on July 1, 2019.