



CalSavers Retirement Savings Program
Participation & Funding Snapshot as of 9/30/2024

Employer Registration Status Changes

Employer Status	9/30/2024	6/30/2024	Change	% Change
Registered	136,497	134,595	1,902	1.4%
Uploaded Roster	125,085	122,358	2,727	2.2%
Started Payroll Deductions	53,310	51,709	1,601	3.1%
Facilitated Deductions in last 90 days	38,417	38,622	-205	-0.5%
Exempt	117,854	129,816	-11,962	-9.2%

Status of Eligible Employers by Wave

Wave (Deadline)	Employers Registered	Employers Exempted	Total Employers Responded	Total Estimated Eligible Employers	Employer Response Rate
Post-Deadline Employers	132,036	108,111	240,147	262,830	91.4%
Wave 2024 (12/31/24)	888	1,473	2,361	N/A	N/A
Wave 4 (12/31/25)	3,573	8,270	11,843	N/A	N/A
Total	136,497	117,854	254,351	262,830	96.8%

* This data point reflects the number of funded account holders associated with more than one registered employer
** Withdrawal Rate is calculated as Accounts with a full withdrawal as a percent of Payroll Contributing Accounts

Participant Savings and Enrollment Changes

Participant Account Status	9/30/2024	6/30/2024	Change	% Change
Funded Accounts	531,673	515,941	15,732	3.0%
Payroll Contributing Accounts	593,809	574,911	18,898	3.3%
Multiple Employer Accounts*	87,543	83,152	4,391	5.3%
Self-Enrolled Funded Accounts	2,739	2,586	153	5.9%
Effective Opt-Out Rate	35.84%	36.01%	-0.17%	-0.5%

Funding Amounts and Withdrawals

Funding Amounts	9/30/2024	6/30/2024	Change	% Change
Total Assets	\$1,074,113,277	\$940,562,084	\$133,551,193	14.2%
Average Funded Account Balance	\$2,020	\$1,823	\$197	10.8%
Total Contributions Amount	\$1,187,975,932	\$1,080,791,473	\$107,184,459	9.9%
Average Monthly Contribution Amount	\$191	\$188	\$3	1.6%
Median Monthly Contribution Amount	\$147	\$145	\$2	1.4%
Average Contribution Rate	5.19%	5.20%	-0.01%	-0.2%
Amount of Withdrawals	\$278,475,917	\$240,990,119	\$37,485,798	15.6%
Accounts with a Full Withdrawal	131,234	122,914	8,320	6.8%
Accounts with a Partial Withdrawal	21,990	19,602	2,388	12.2%
Withdrawal Rate**	22.10%	21.38%	0.72%	3.4%

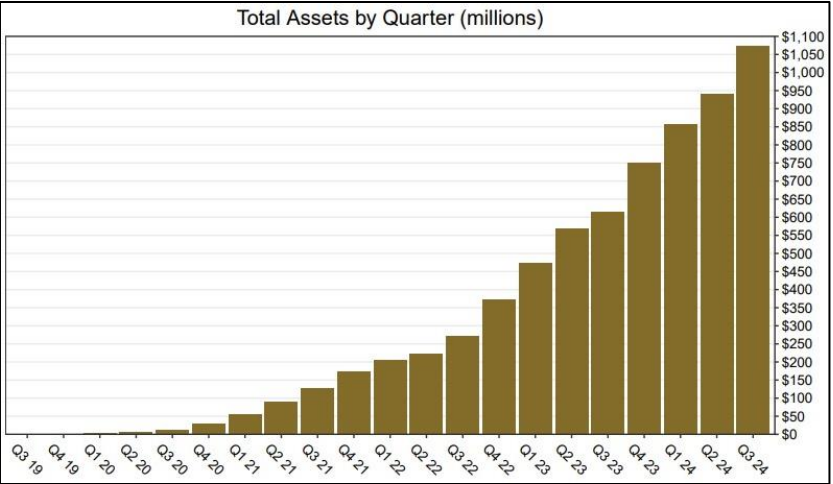
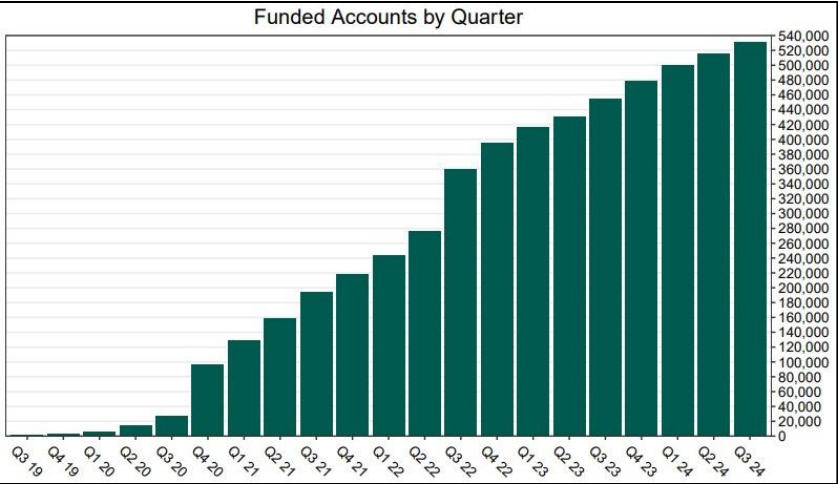
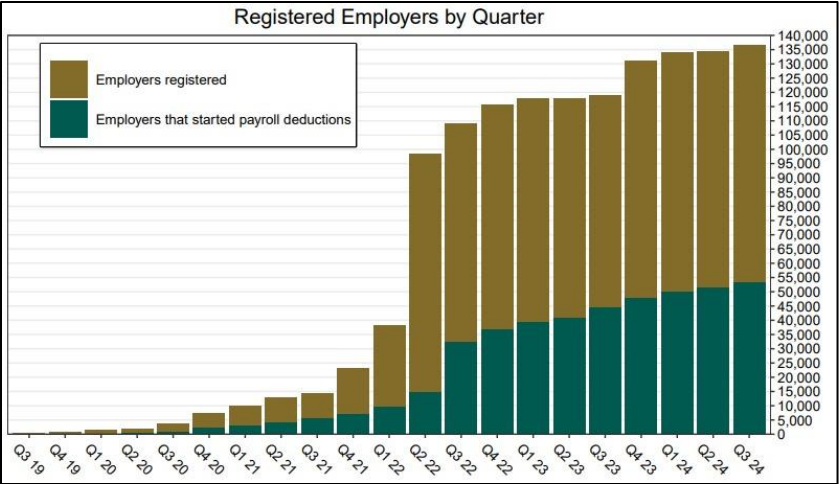
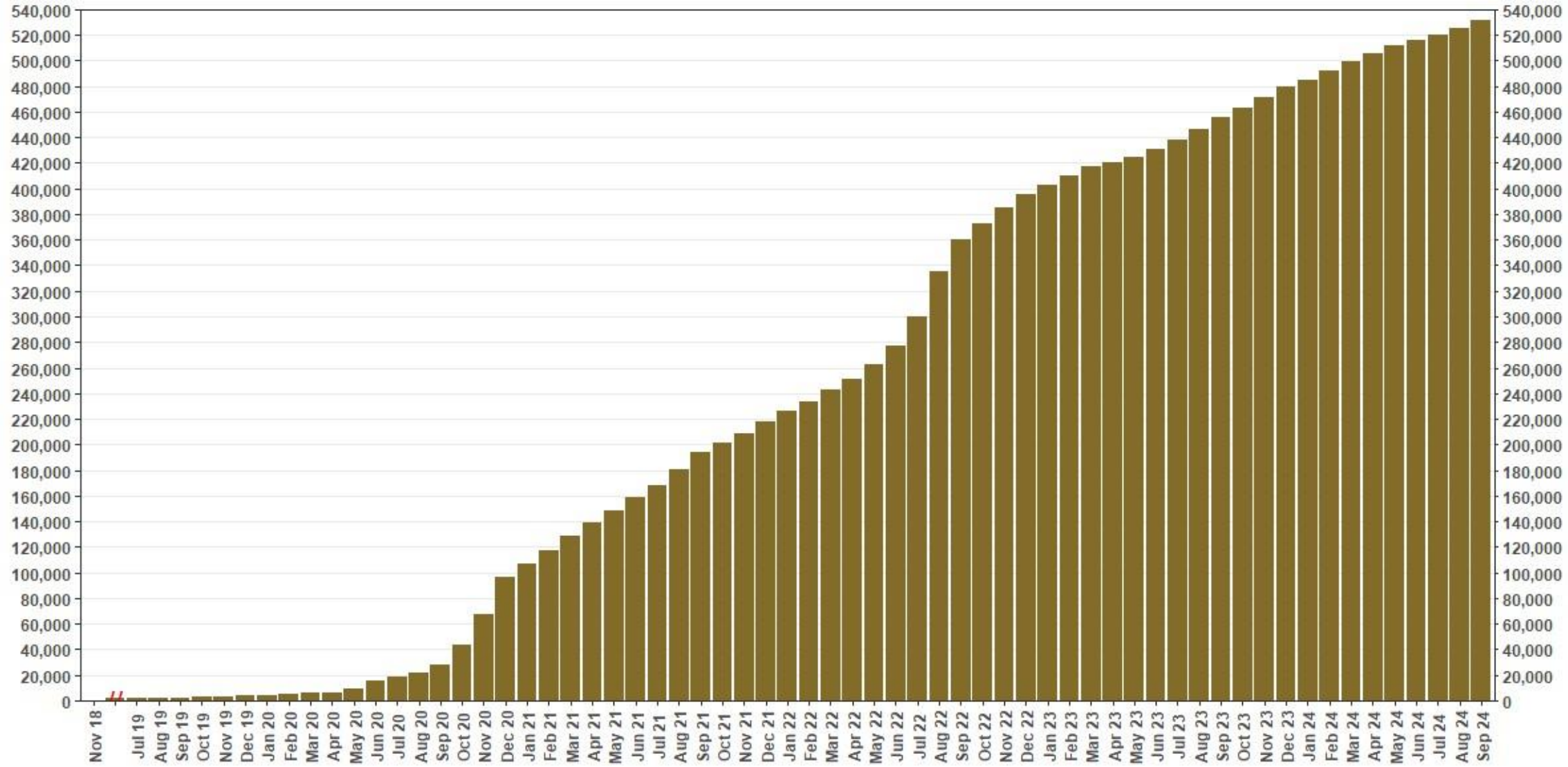


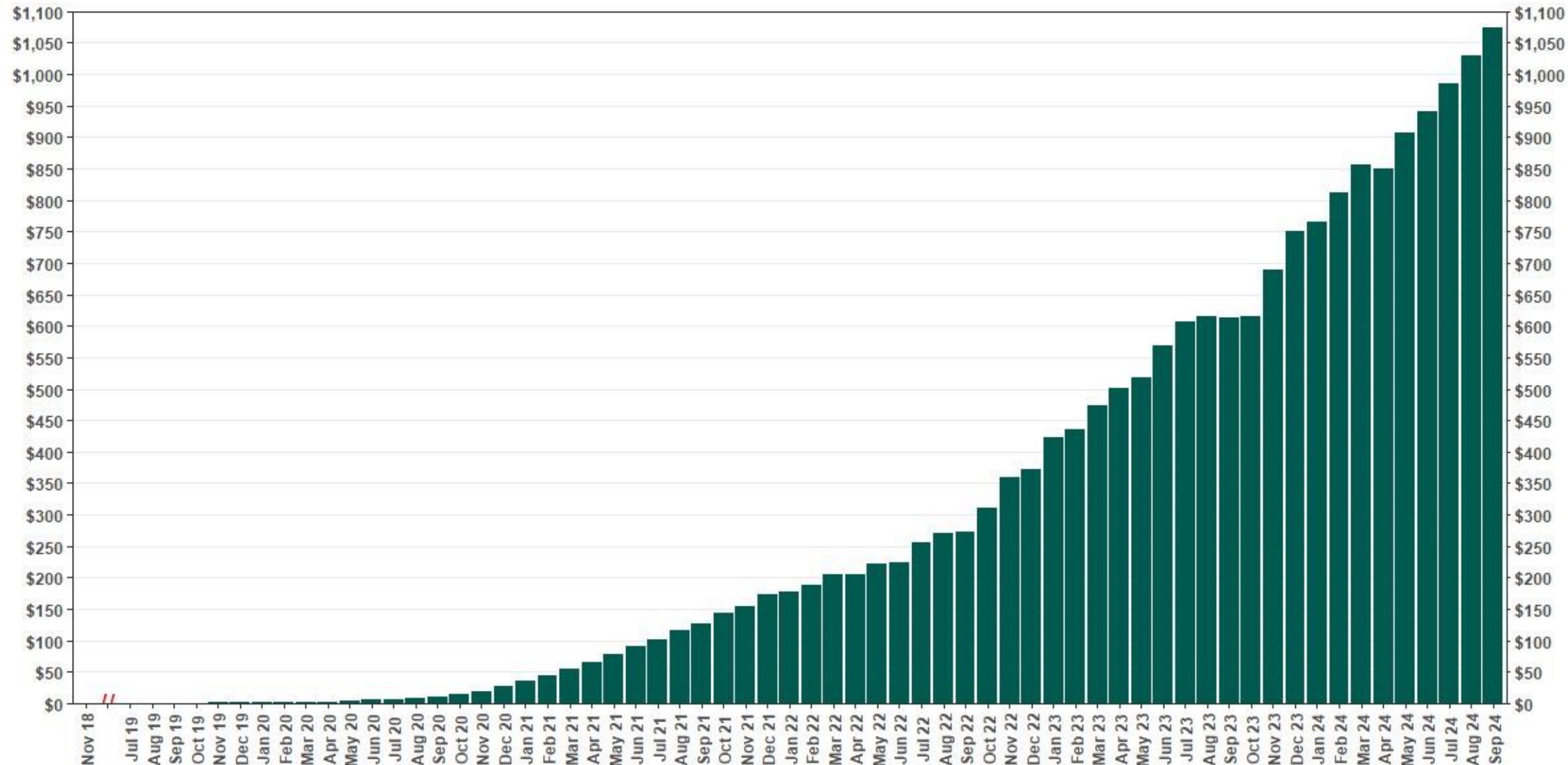
Chart 1: Funded Accounts

As of 9/30/24



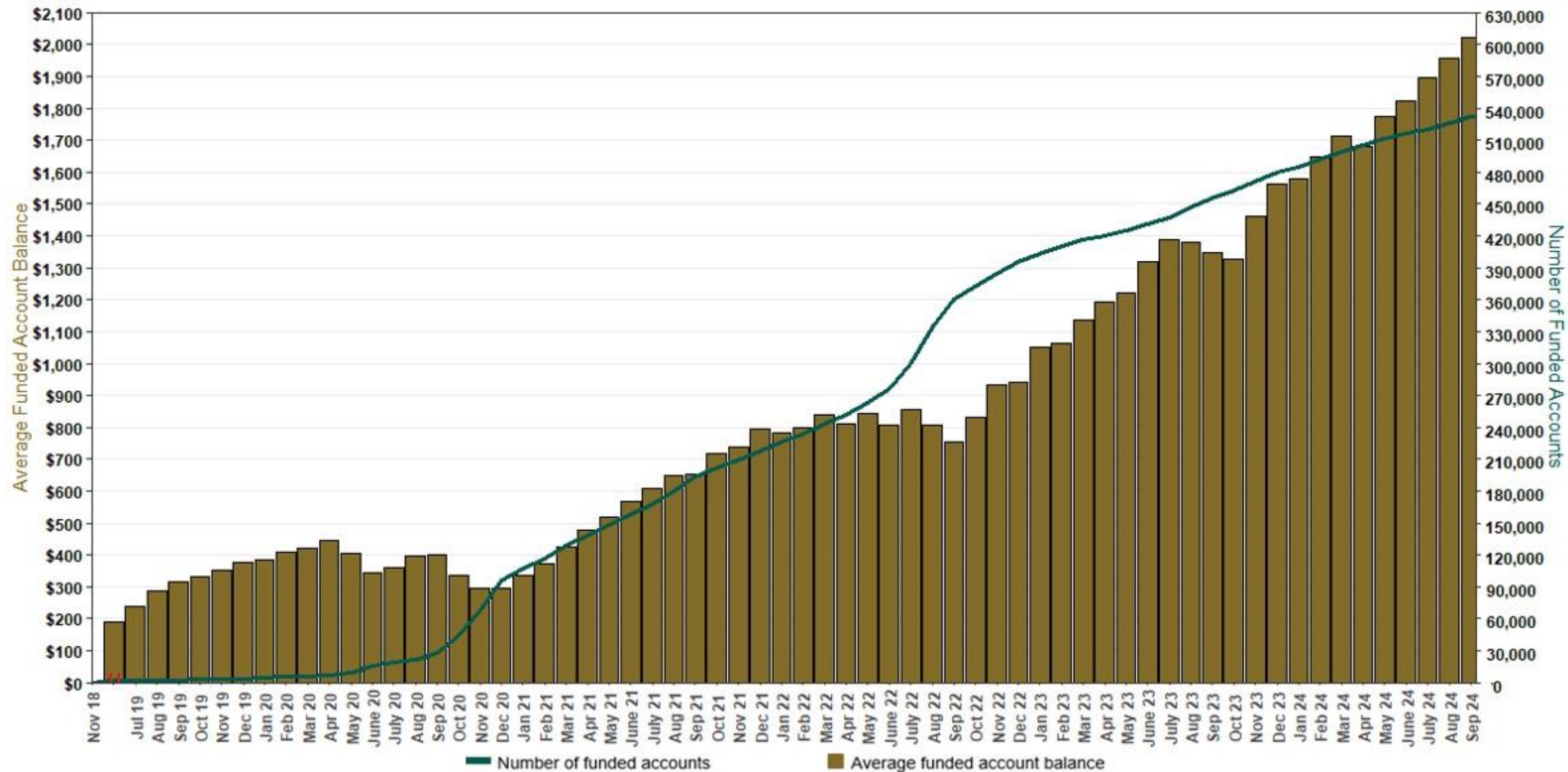
The Program operated a limited scope pilot from November 2018 through June 2019 prior to full statewide launch on July 1, 2019.

Chart 2: Total Assets (millions)
As of 9/30/24



The Program operated a limited scope pilot from November 2018 through June 2019 prior to full statewide launch on July 1, 2019.

Chart 3: Average Funded Account Balance
As of 9/30/24



The Program operated a limited scope pilot from November 2018 through June 2019 prior to full statewide launch on July 1, 2019.

Chart 4: Distribution of Accounts by Balance
As of 9/30/24

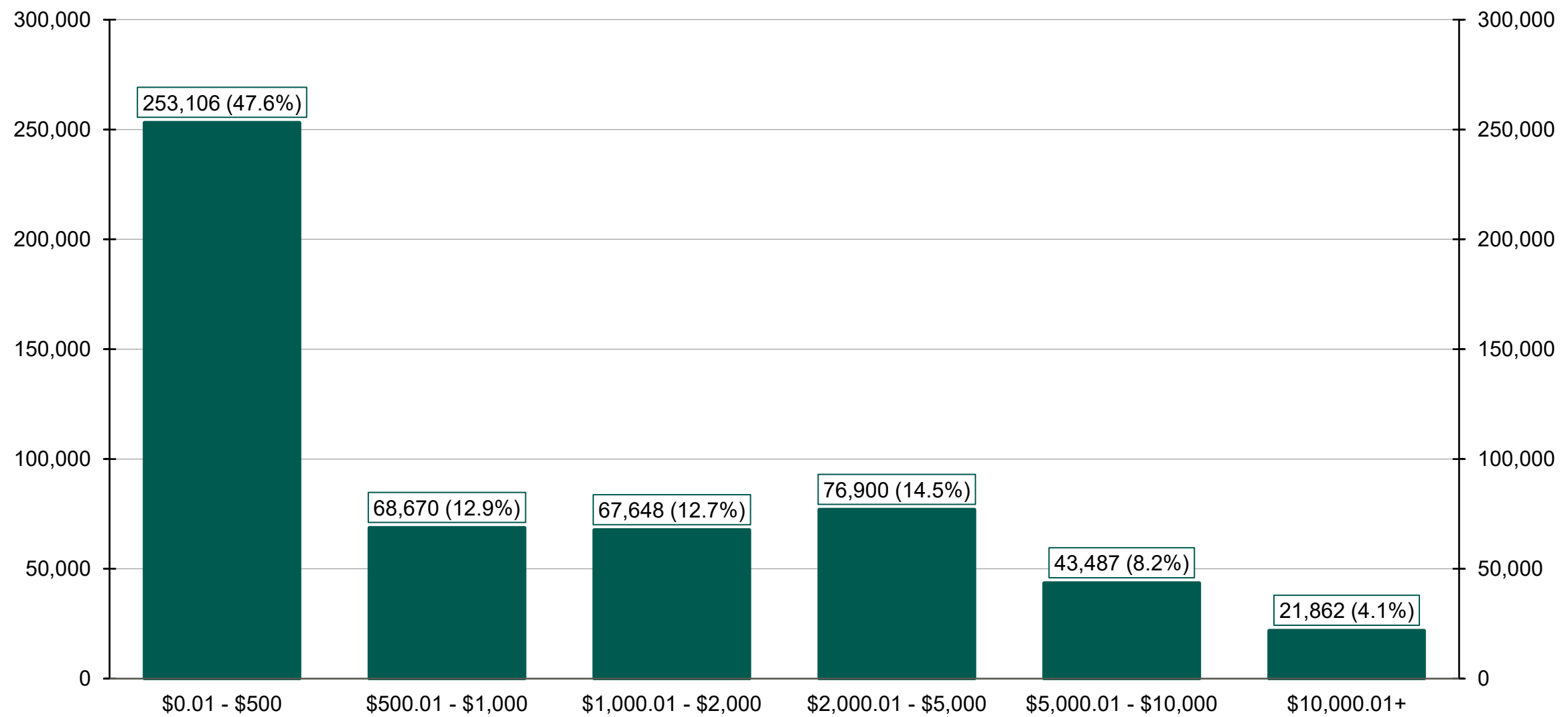
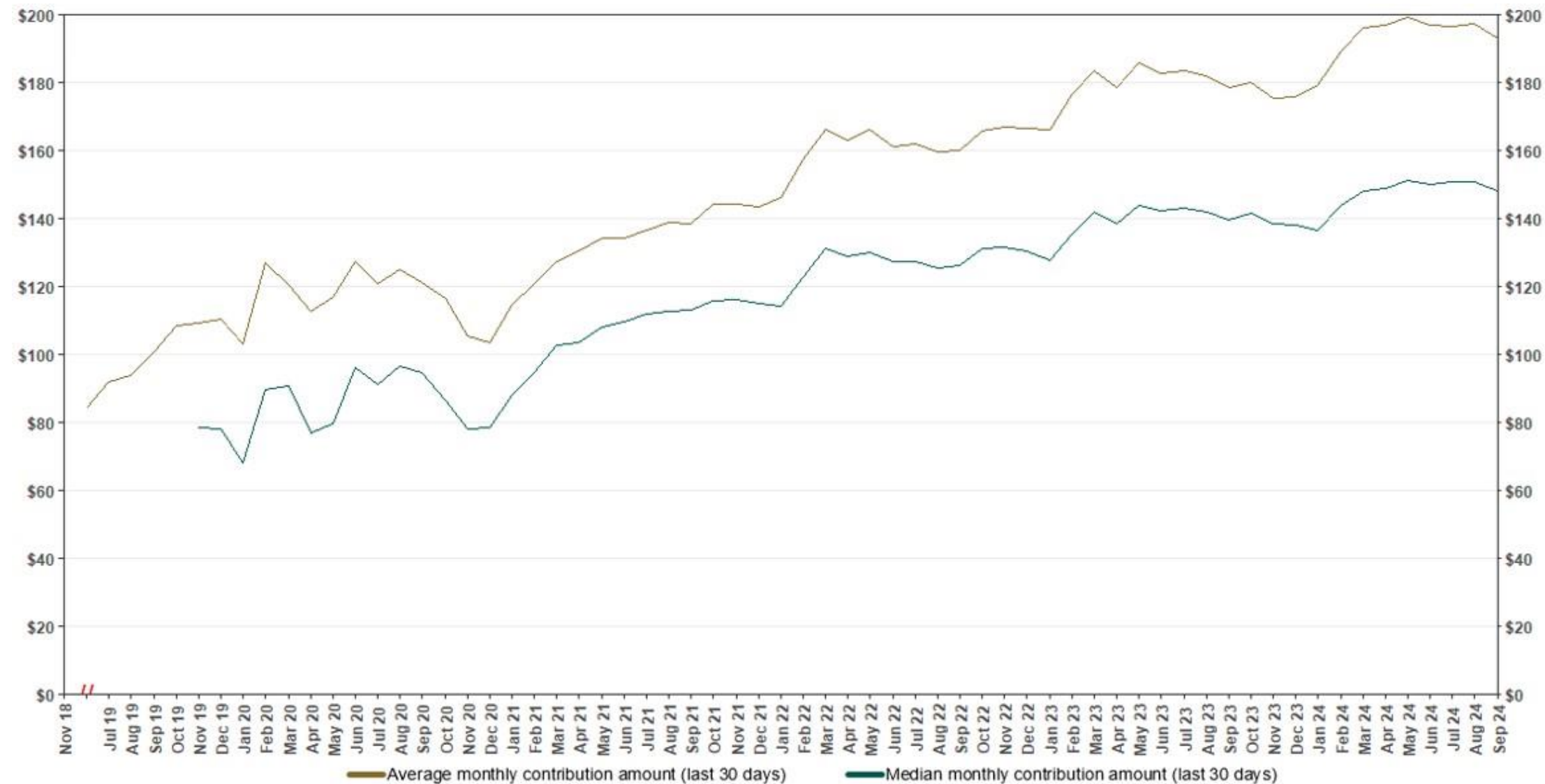
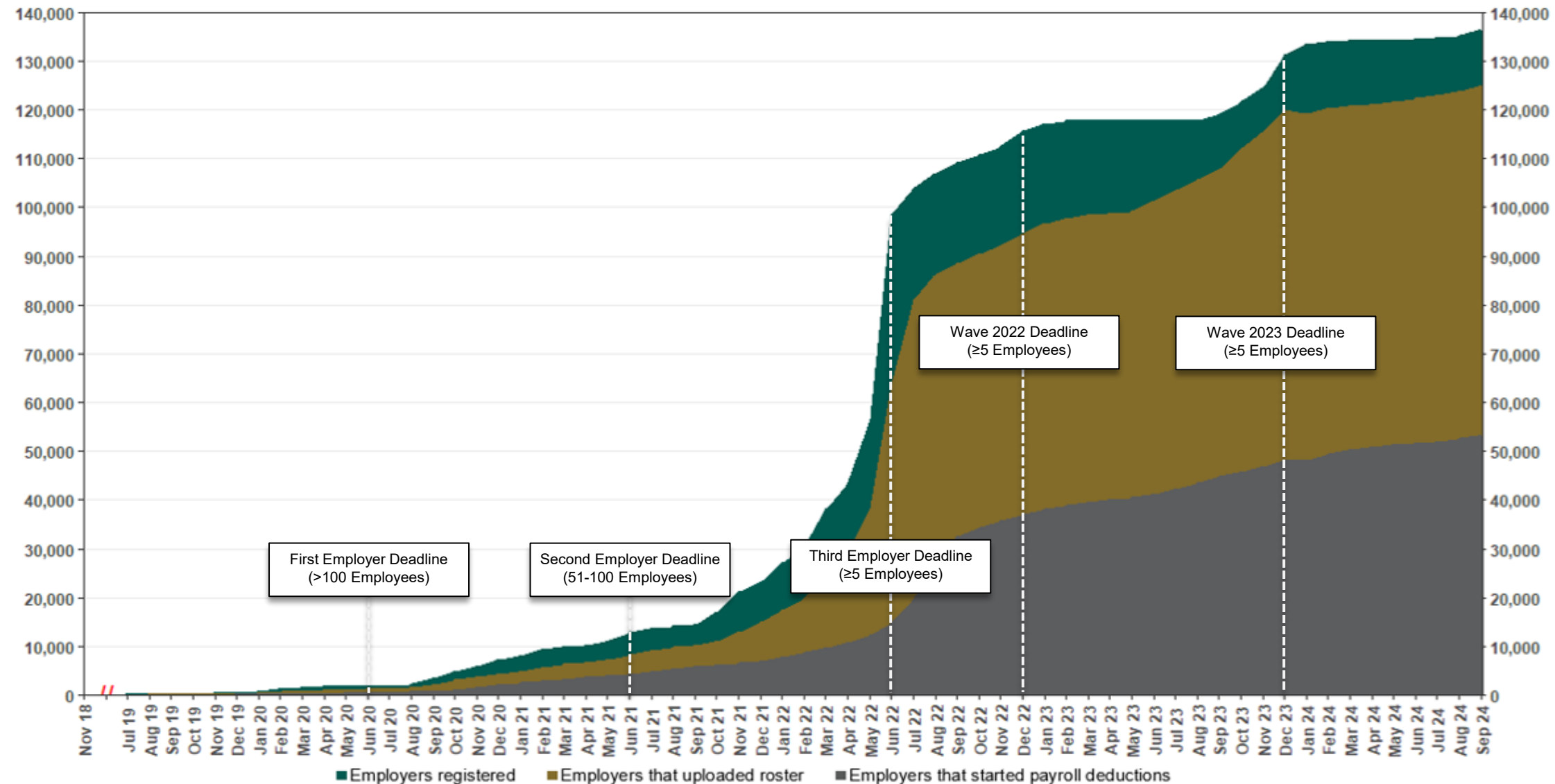


Chart 5: Monthly Contributions Per Saver
As of 9/30/24



The Program operated a limited scope pilot from November 2018 through June 2019 prior to full statewide launch on July 1, 2019.

Chart 6: Status of All Registered Employers
As of 9/30/24



The Program operated a limited scope pilot from November 2018 through June 2019 prior to full statewide launch on July 1, 2019.

Chart 7: Status of Post-Deadline Employers

As of 9/30/24

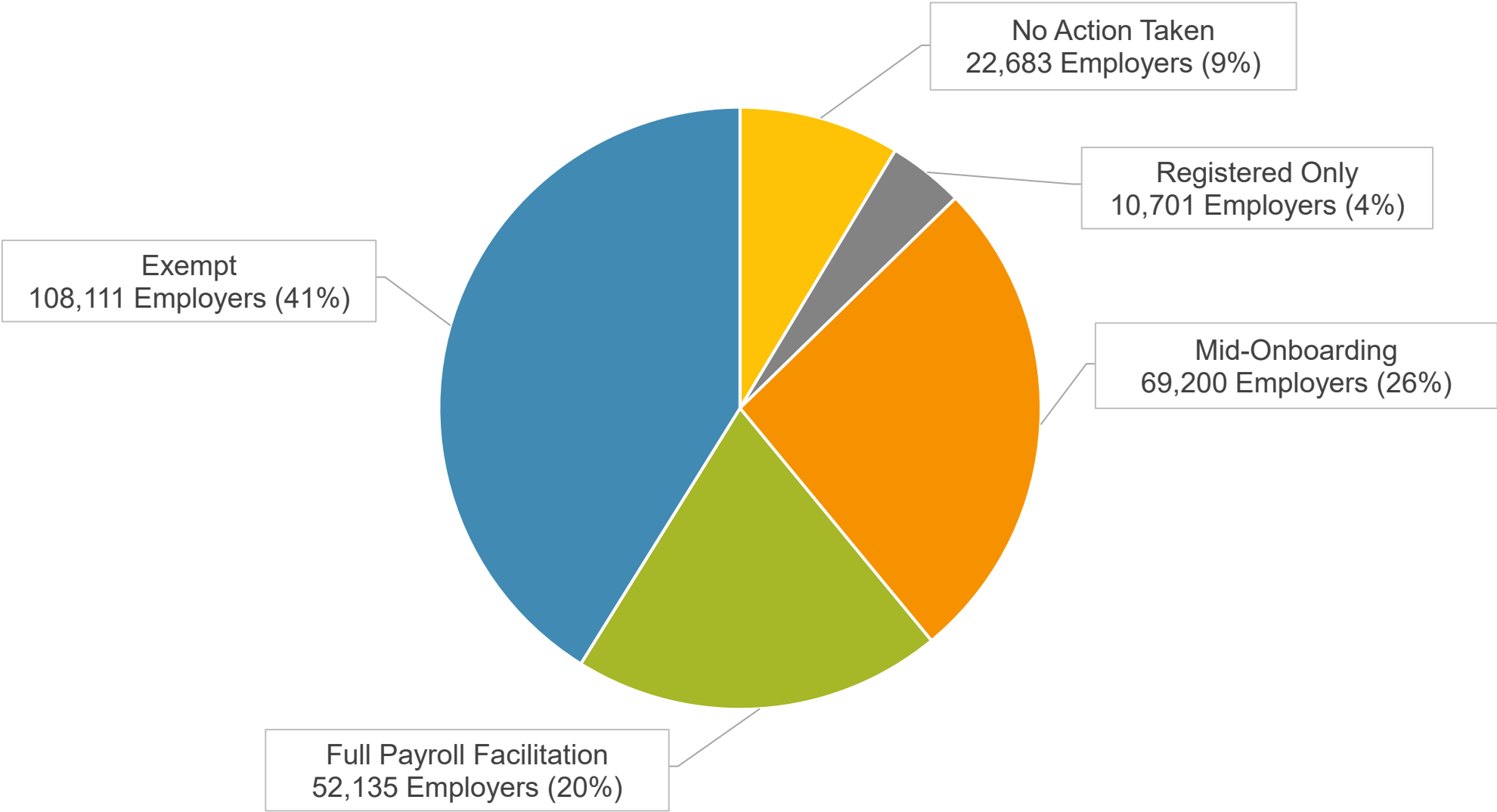
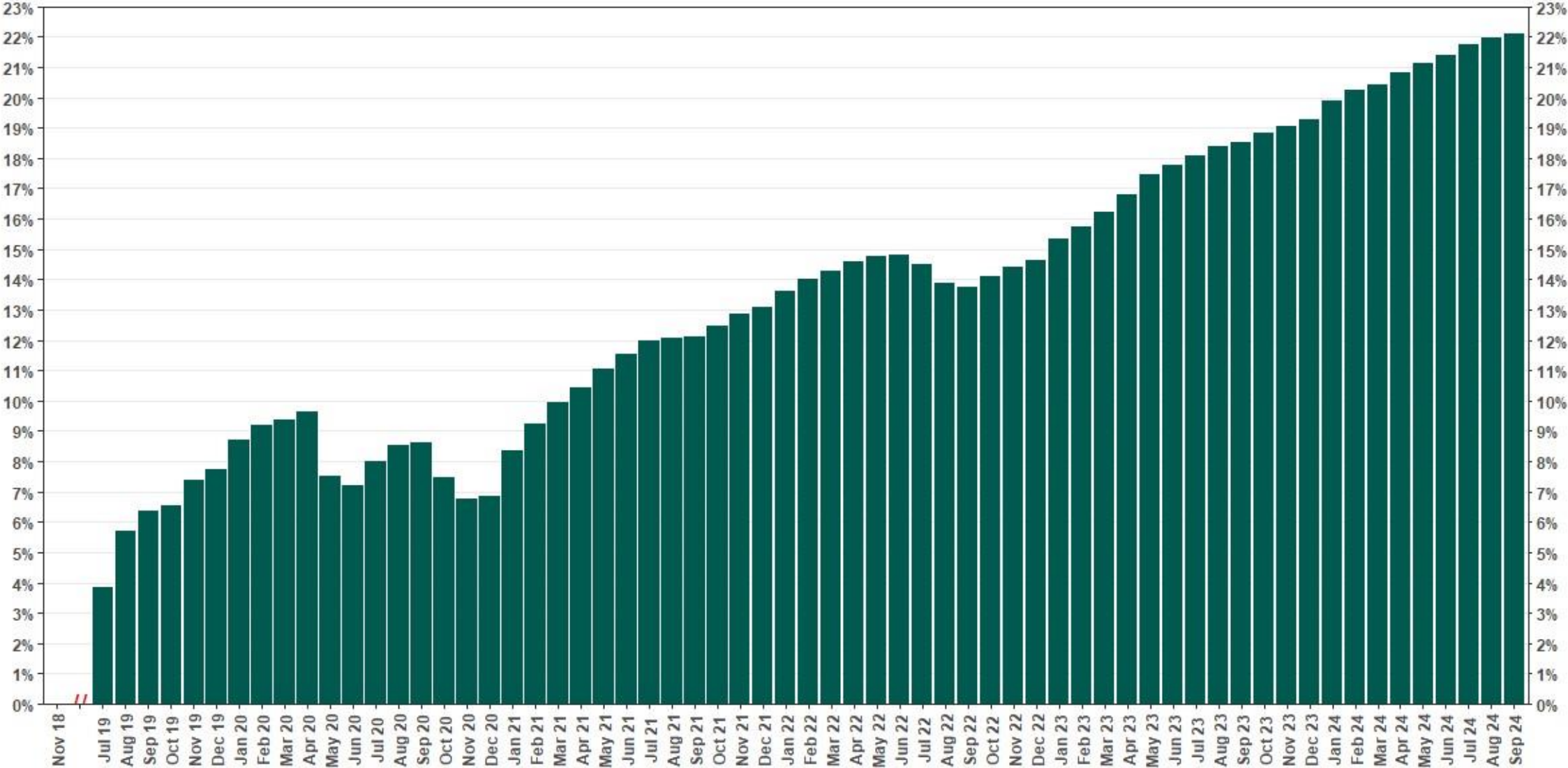


Chart 8: Accounts w/ Full Withdrawal as % of Payroll Contributing
Accounts
As of 9/30/24



The Program operated a limited scope pilot from November 2018 through June 2019 prior to full statewide launch on July 1, 2019.