

## CalSavers Retirement Savings Program Participation & Funding Snapshot as of 1/31/22

Employers	1/31/2022	12/31/2021	Change	% Change
1 Employers Registered	27,048	23,203	3,845	16.6%
2 Employers That Uploaded Roster	17,360	15,008	2,352	15.7%
3 Employers Ever Facilitated Deductions	7,865	7,059	806	11.4%
4 Employers Facilitating Deductions (last 90 days)	7,368	New Metric	N/A	N/A
5 Exempted Employers	59,845	58,220	1,625	2.8%

### Participants

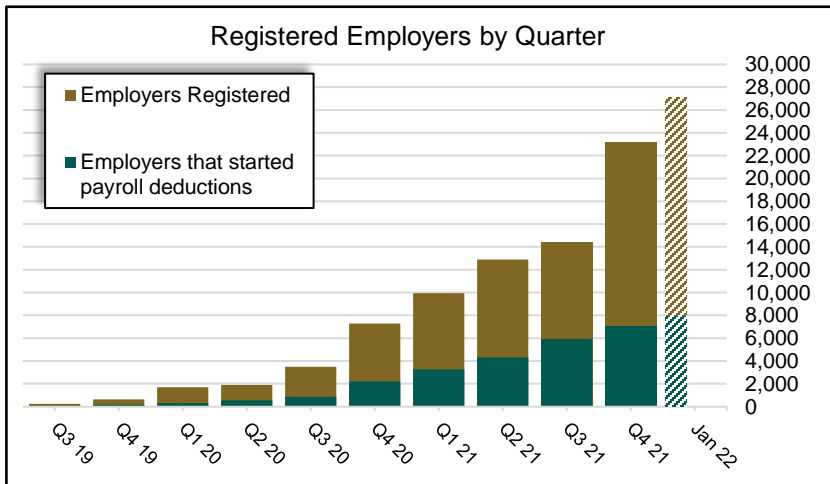
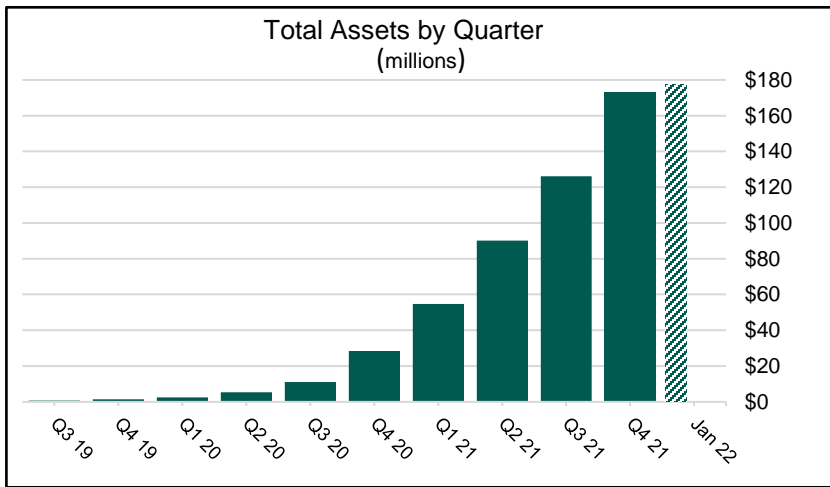
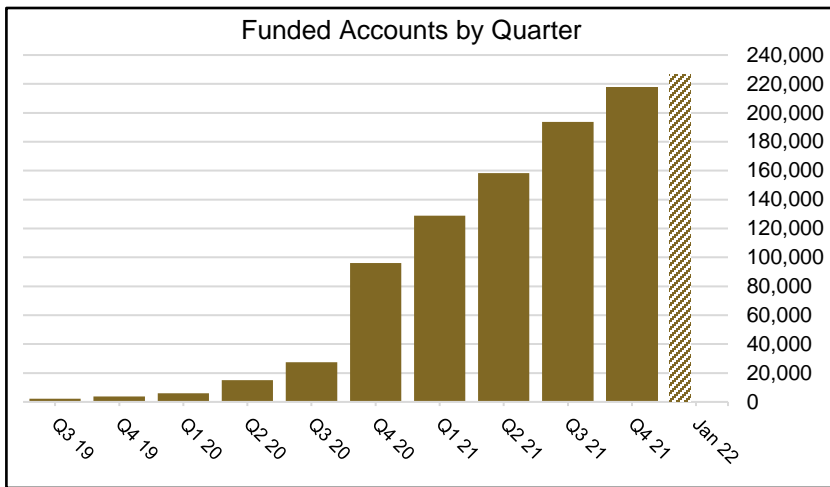
6 Funded Accounts	226,703	217,892	8,811	4.0%
7 Payroll Contributing Accounts	244,534	234,842	9,692	4.1%
8 Multiple Employer Accounts	81,631	76,241	5,390	7.1%
9 Self-Enrolled Funded Accounts	814	766	48	6.3%
10 Effective Opt-Out Rate	29.88%	29.74%	0.14%	0.5%

### Funding

11 Total Assets	\$177,257,196	\$173,022,007	\$4,235,189	2.4%
12 Average Funded Account Balance	\$782	\$794	-\$12	-1.5%
13 Total Contributions Amount	\$202,134,184	\$186,563,486	\$15,570,698	8.3%
14 Average Monthly Contribution Amount	\$145	\$150	-\$5	-3.2%
15 Median Monthly Contribution Amount	\$112	\$119	-\$6	-5.1%
16 Average Contribution Rate	5.13%	5.02%	0.11%	2.1%
17 Amount of Withdrawals	\$23,901,548	\$20,493,838	\$3,407,710	16.6%
18 Accounts with a Full Withdrawal	33,316	30,686	2,630	8.6%
19 Accounts with a Partial Withdrawal	2,554	2,237	317	14.2%
20 Withdrawal Rate*	13.62%	13.07%	0.56%	4.3%

### Status of Estimated Eligible Employers by Wave

Wave (Deadline)	Employers Registered	Employers Exempted	Total Employers Responded	Total Estimated Eligible Employers <sup>A</sup>	Employer Response Rate
Wave 1 (9/30/20)	1,696	5,442	7,138	7,833	91.1%
Wave 2 (6/30/21)	3,580	5,203	8,783	11,283	77.8%
Wave 3 (6/30/22)	21,772	49,200	70,972	267,982	26.5%
<b>Total</b>	<b>27,048</b>	<b>59,845</b>	<b>86,893</b>	<b>287,098</b>	<b>30.3%</b>

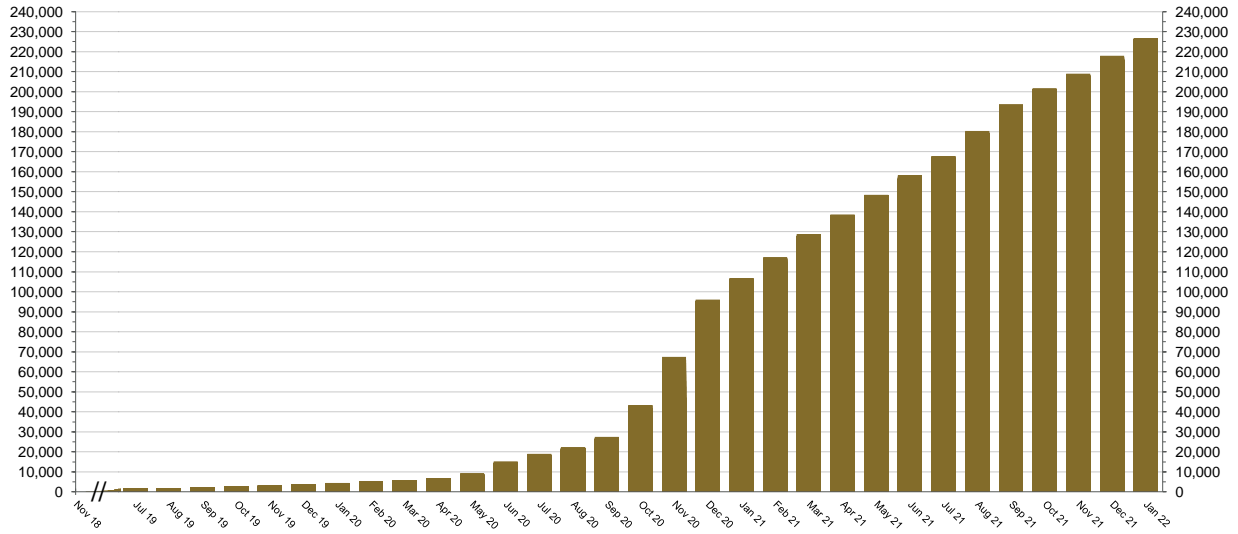


\*The withdrawal rate is calculated as Accounts with a full withdrawal as a percent of Payroll Contributing Accounts

<sup>A</sup>Employer size is recalculated annually based on data obtained from the Employment Development Department. Data in the table above reflects the recalculation based on 2020 EDD reports.

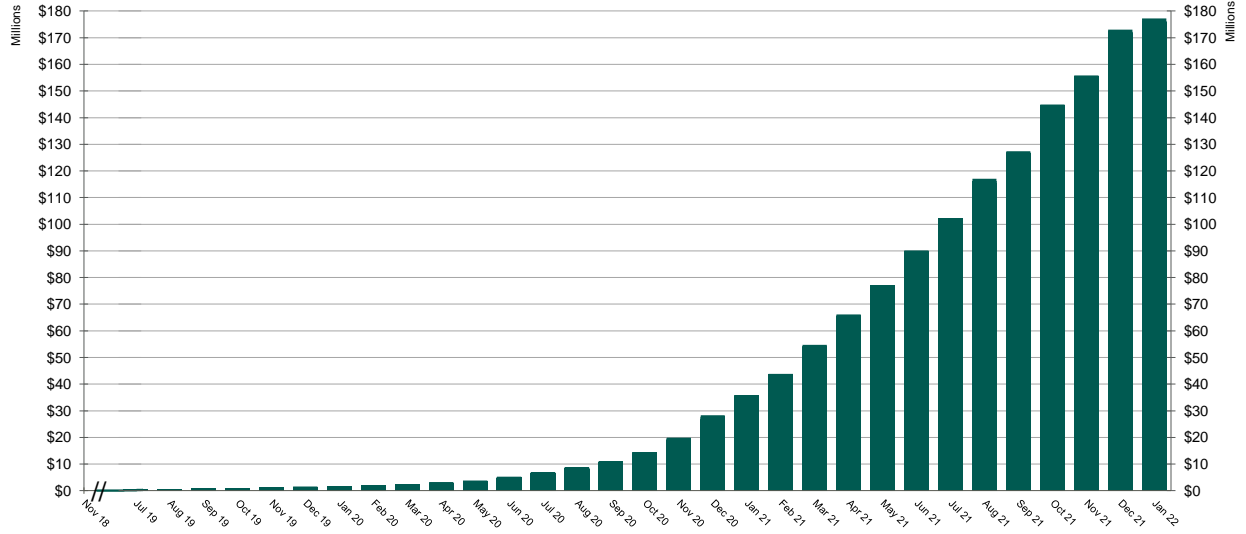
Historic participation reports are available at: <https://www.treasurer.ca.gov/calsavers/reports.asp>

**Chart 1: Funded Accounts**  
As of 1/31/22



The Program operated a limited scope pilot from November 2018 through June 2019 prior to full statewide launch on July 1, 2019.

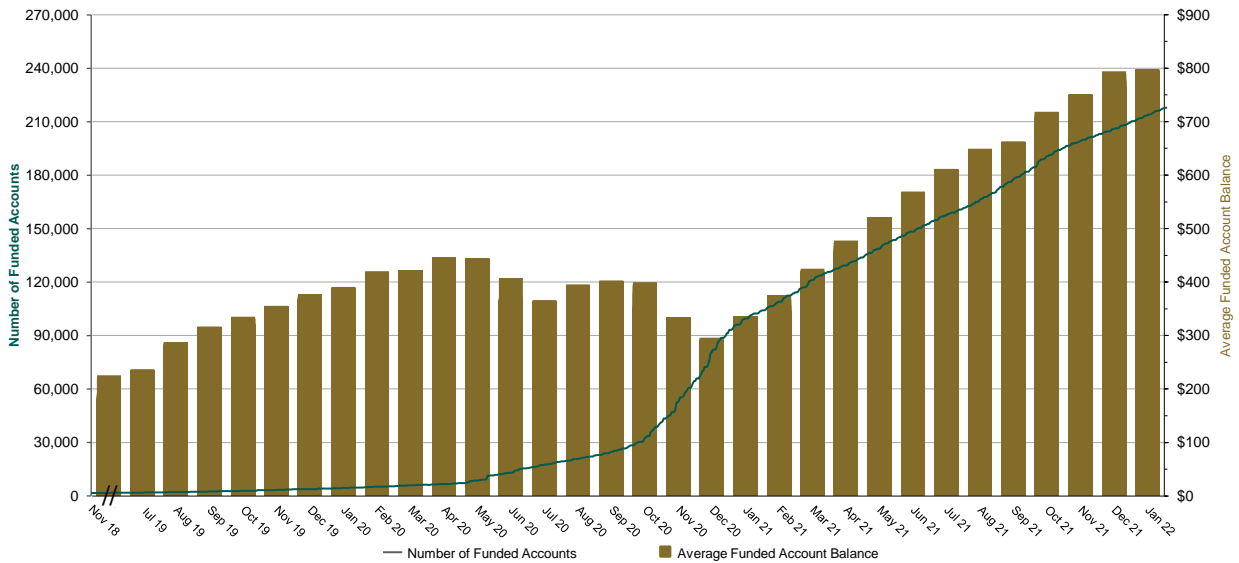
**Chart 2: Total Assets**  
As of 1/31/22



The Program operated a limited scope pilot from November 2018 through June 2019 prior to full statewide launch on July 1, 2019.

### Chart 3: Average Funded Account Balance

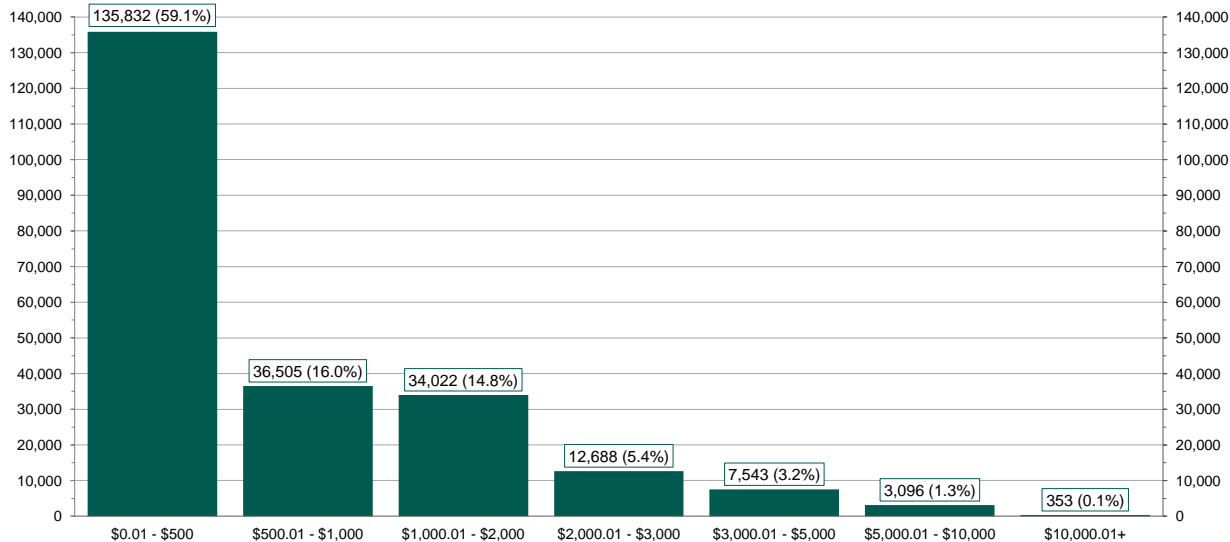
As of 1/31/22



The Program operated a limited scope pilot from November 2018 through June 2019 prior to full statewide launch on July 1, 2019.

### Chart 4: Distribution of Accounts by Balance

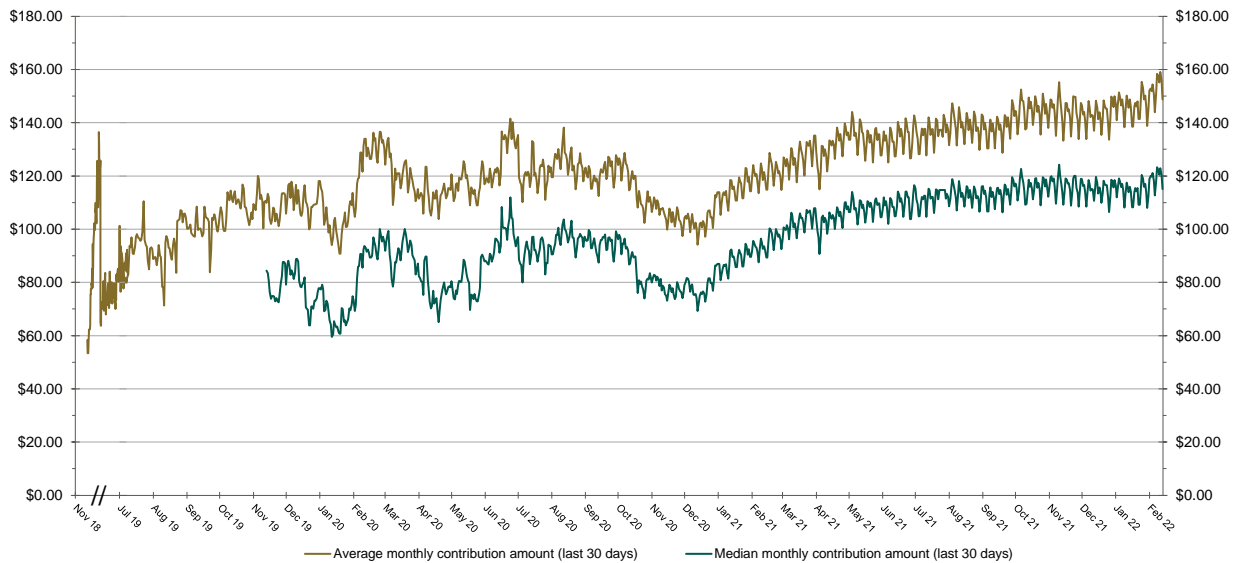
As of 1/31/22



The Program operated a limited scope pilot from November 2018 through June 2019 prior to full statewide launch on July 1, 2019.

**Chart 5: Monthly Contributions Per Saver**

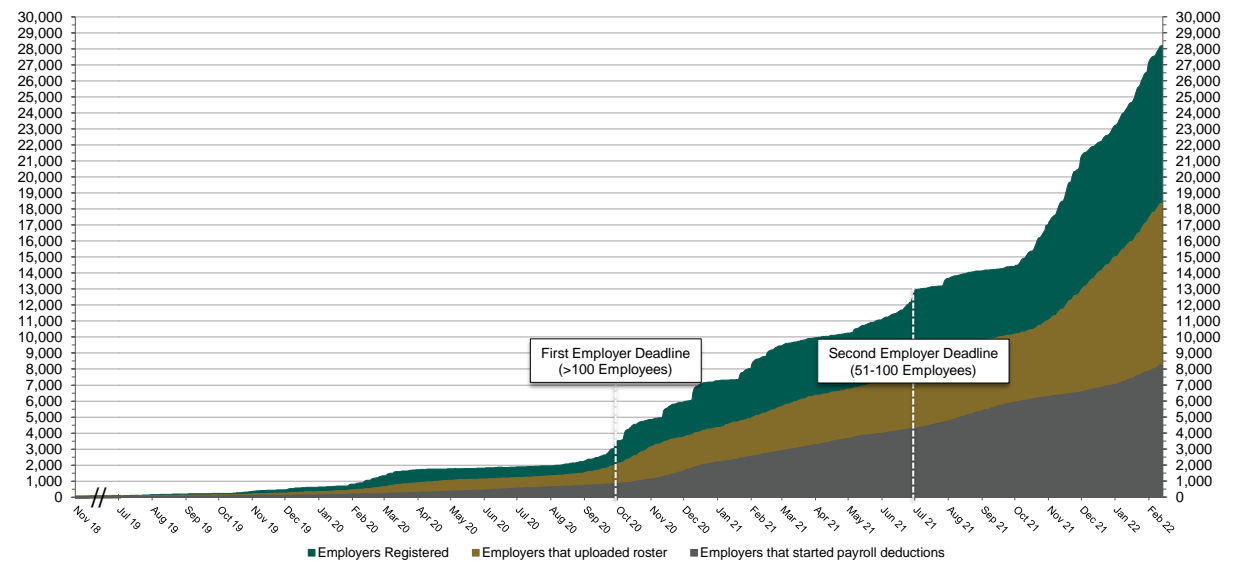
As of 1/31/22



The Program operated a limited scope pilot from November 2018 through June 2019 prior to full statewide launch on July 1, 2019.

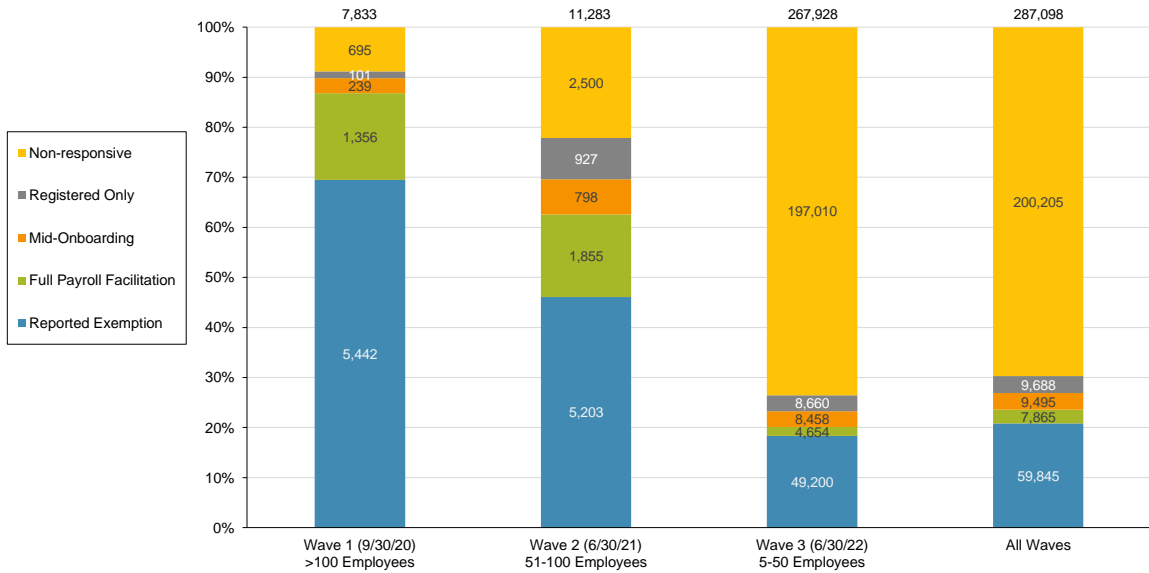
**Chart 6: Status of All Registered Employers**

As of 1/31/22

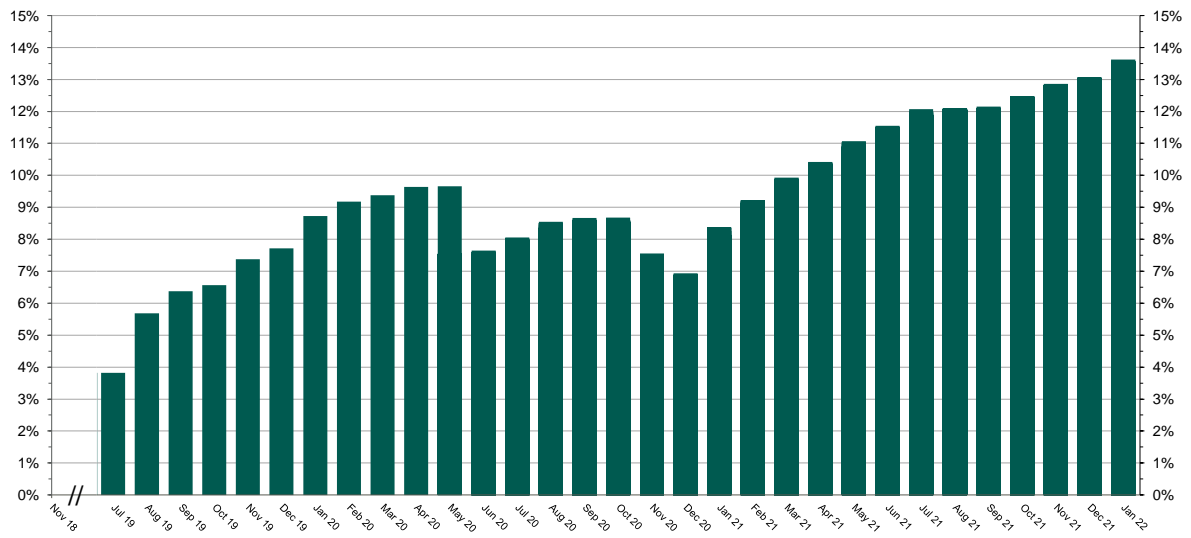


The Program operated a limited scope pilot from November 2018 through June 2019 prior to full statewide launch on July 1, 2019.

**Chart 7: Employer Status by Wave**  
As of 1/31/22



**Chart 8: Accounts w/a Full Withdrawal as % of Payroll Contributing Accounts**  
As of 1/31/22



The Program operated a limited scope pilot from November 2018 through June 2019 prior to full statewide launch on July 1, 2019.