



CalSavers Retirement Savings Program Participation & Funding Snapshot as of 9/30/21

| Employers | 9/30/2021 | 8/31/2021 | Change | % Change |
|---|-----------|-----------|--------|----------|
| 1 Employers Registered | 14,413 | 14,133 | 280 | 2.0% |
| 2 Employers That Uploaded Roster | 10,183 | 9,794 | 389 | 4.0% |
| 3 Employers That Started Payroll Deductions | 5,929 | 5,396 | 533 | 9.9% |
| 4 Exempted Employers | 52,859 | 52,261 | 598 | 1.1% |

Participants

| | | | | |
|---------------------------------|---------|---------|--------|-------|
| 5 Funded Accounts | 193,622 | 180,387 | 13,235 | 7.3% |
| 6 Payroll Contributing Accounts | 207,469 | 192,875 | 14,594 | 7.6% |
| 7 Multiple Employer Accounts | 60,729 | 55,669 | 5,060 | 9.1% |
| 8 Effective Opt-Out Rate | 29.70% | 29.85% | -0.15% | -0.5% |

Funding

| | | | | |
|--|---------------|---------------|--------------|-------|
| 9 Total Assets | \$126,145,383 | \$117,086,372 | \$9,059,011 | 7.7% |
| 10 Average Funded Account Balance | \$652 | \$649 | \$2 | 0.4% |
| 11 Total Contributions Amount | \$138,972,395 | \$123,711,124 | \$15,261,271 | 12.3% |
| 12 Average Monthly Contribution Amount | \$143 | \$143 | -\$1 | -0.4% |
| 13 Median Monthly Contribution Amount | \$116 | \$116 | \$0 | 0.0% |
| 14 Average Contribution Rate | 5.02% | 5.09% | -0.07% | -1.4% |
| 15 Amount of Withdrawals | \$13,720,246 | \$11,994,749 | \$1,725,496 | 14.4% |
| 16 Accounts with a Full Withdrawal | 25,102 | 23,306 | 1,796 | 7.7% |
| 17 Accounts with a Partial Withdrawal | 1,477 | 1,271 | 206 | 16.2% |
| 18 Withdrawal Rate* | 12.10% | 12.08% | 0.02% | 0.1% |

Status of Estimated Eligible Employers by Wave

| Wave (Deadline) | Employers Registered | Employers Exempted | Total Employers Responded | Total Estimated Eligible Employers^ | Employer Response Rate | Employers Added Roster | | Employers Started Payroll | |
|------------------|----------------------|--------------------|---------------------------|-------------------------------------|------------------------|------------------------|-----------------|---------------------------|-----------------|
| | | | | | | Employers | % of Registered | Employers | % of Registered |
| Wave 1 (9/30/20) | 1,913 | 5,148 | 7,061 | 8,028 | 87.95% | 1,620 | 84.68% | 1,320 | 69.00% |
| Wave 2 (6/30/21) | 3,402 | 4,746 | 8,148 | 11,135 | 73.17% | 2,457 | 72.22% | 1,598 | 46.97% |
| Wave 3 (6/30/22) | 9,098 | 42,965 | 52,063 | 281,577 | 18.49% | 6,106 | 67.11% | 3,011 | 33.10% |
| Total | 14,413 | 52,859 | 67,272 | 300,740 | 22.37% | 10,183 | 70.65% | 5,929 | 41.14% |

*The withdrawal rate is calculated as Accounts with a full withdrawal as a percent of Payroll Contributing Accounts

^Employer size is recalculated annually based on data obtained from the Employment Development Department. Data in the table above reflects the recalculation based on 2020 EDD reports.

Historic participation reports are available at: <https://www.treasurer.ca.gov/calsavers/reports.asp>

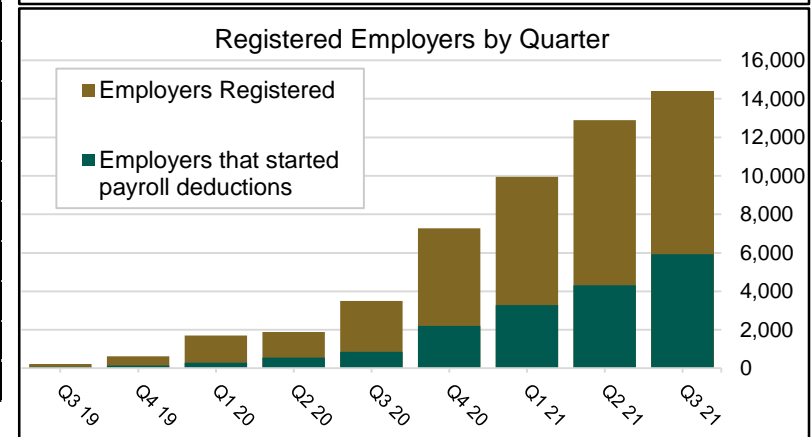
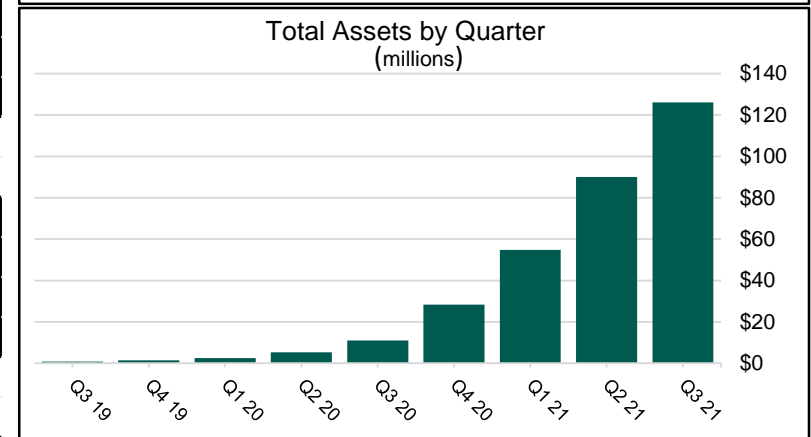
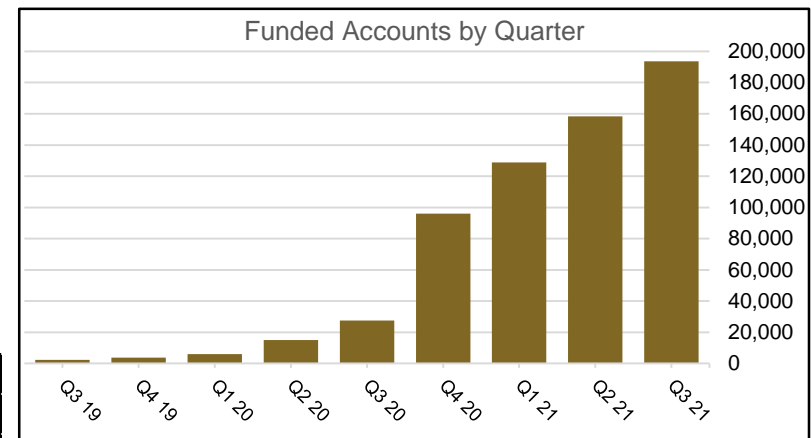
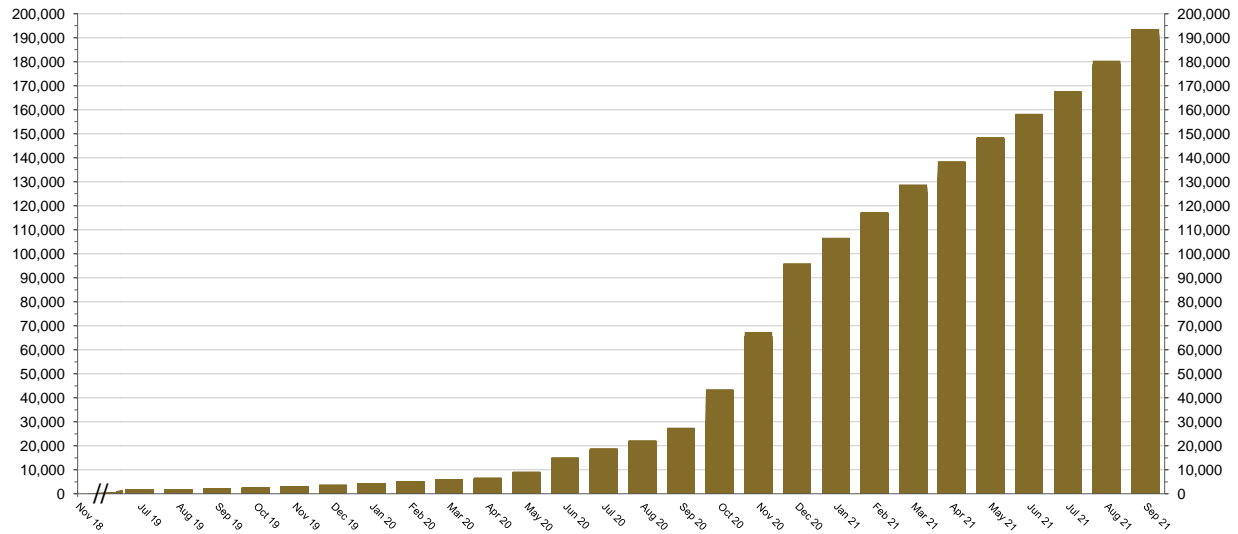


Chart 1: Funded Accounts

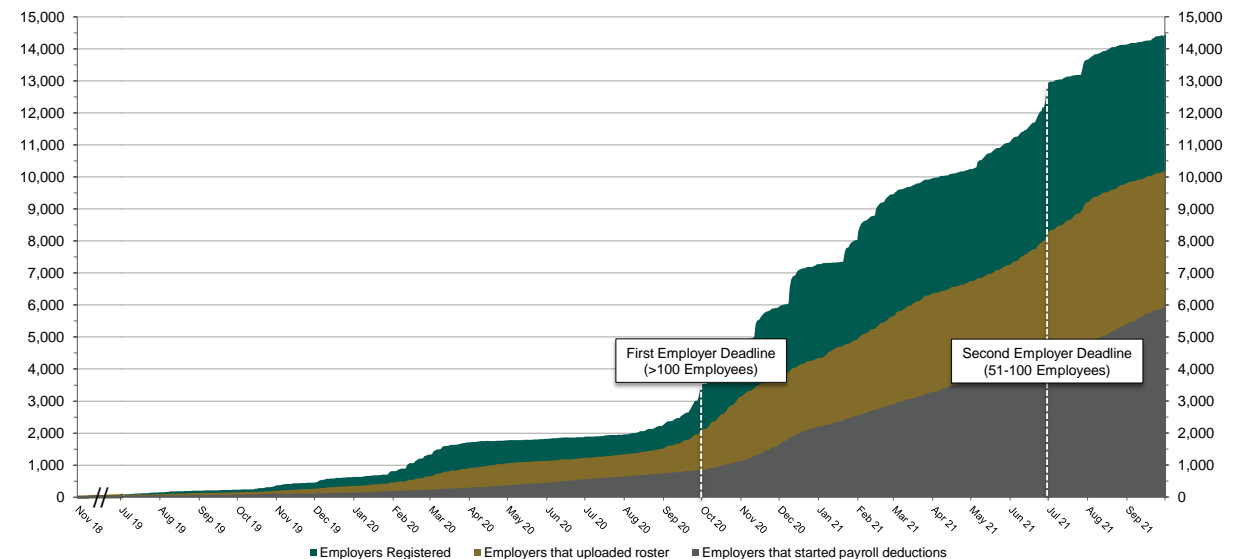
As of 9/30/21



The Program operated a limited scope pilot from November 2018 through June 2019 prior to full statewide launch on July 1, 2019.

Chart 2: Status of All Registered Employers

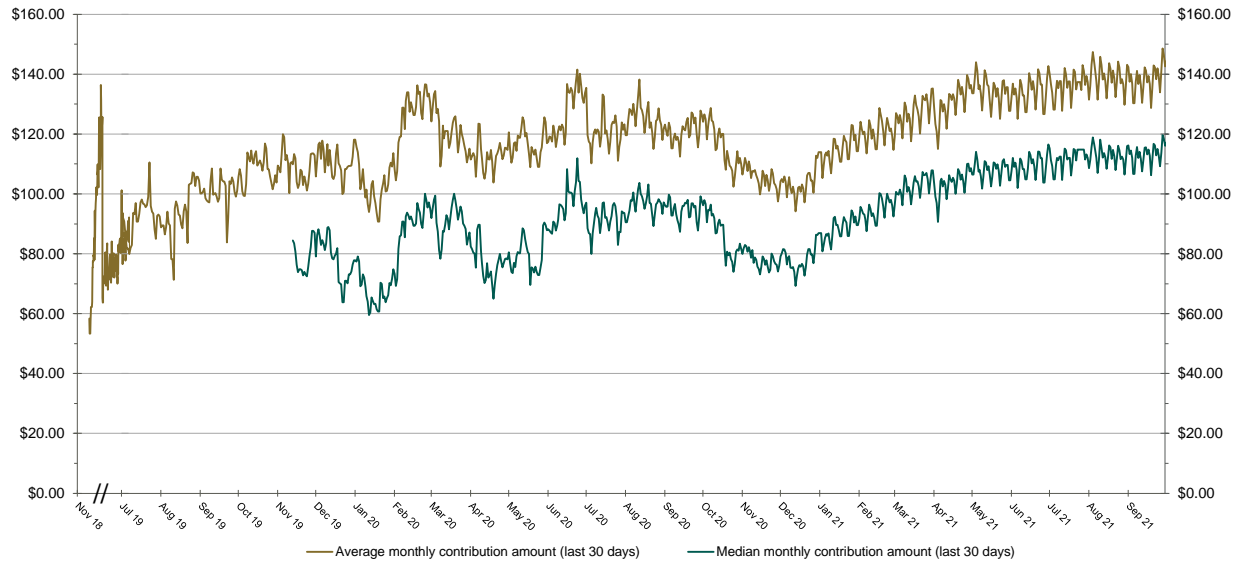
As of 9/30/21



The Program operated a limited scope pilot from November 2018 through June 2019 prior to full statewide launch on July 1, 2019.

Chart 3: Monthly Contributions Per Saver

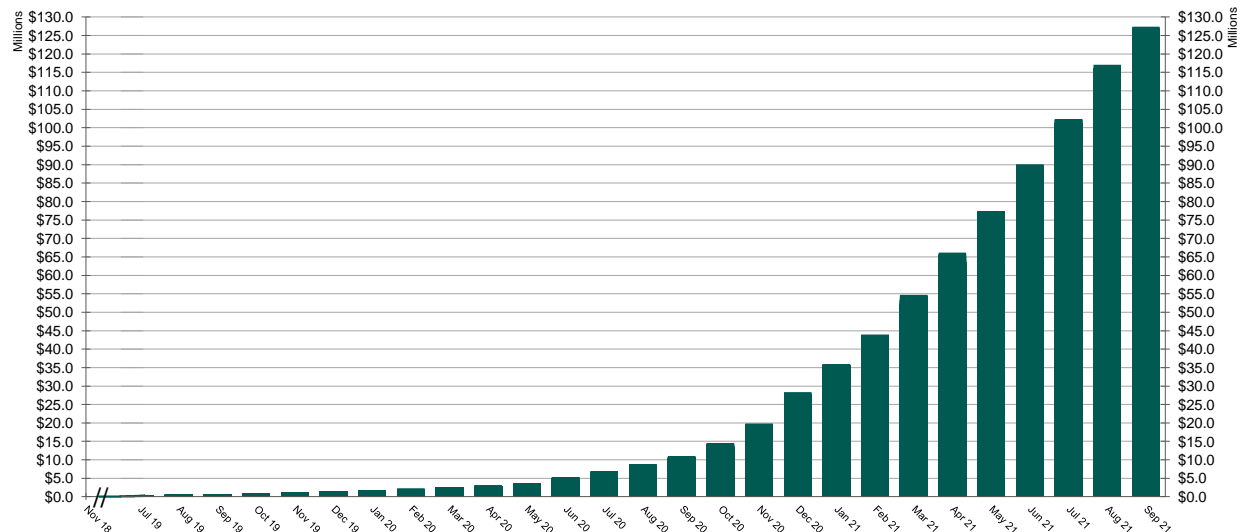
As of 9/30/21



The Program operated a limited scope pilot from November 2018 through June 2019 prior to full statewide launch on July 1, 2019.

Chart 4: Total Assets

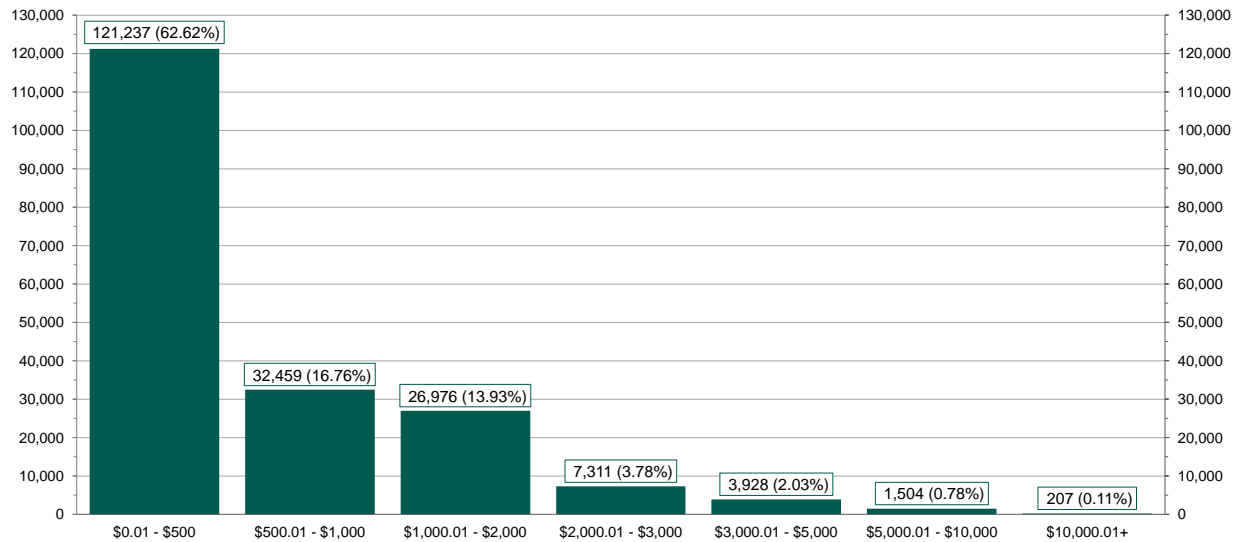
As of 9/30/21



The Program operated a limited scope pilot from November 2018 through June 2019 prior to full statewide launch on July 1, 2019.

Chart 5: Distribution of Accounts by Balance

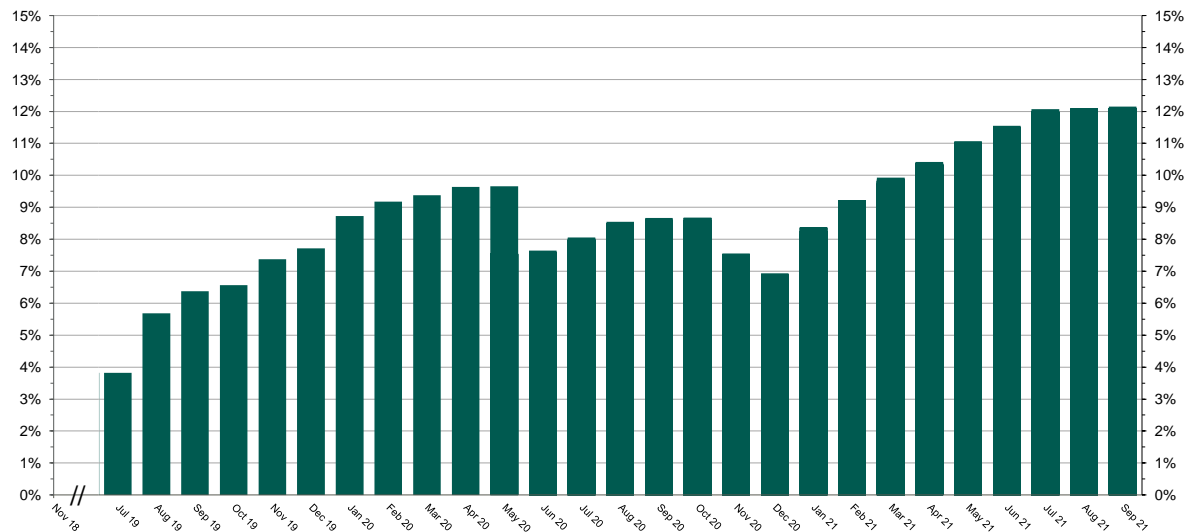
As of 9/30/21



The Program operated a limited scope pilot from November 2018 through June 2019 prior to full statewide launch on July 1, 2019.

Chart 6: Accounts w/a Full Withdrawal as % of Payroll Contributing Accounts

As of 9/30/21



The Program operated a limited scope pilot from November 2018 through June 2019 prior to full statewide launch on July 1, 2019.