



CalSavers Retirement Savings Program Participation & Funding Snapshot as of 2/28/2022

Employers	2/28/2022	1/31/2022	Change	% Change
1 Employers Registered	30,395	27,048	3,347	12.4%
2 Employers That Uploaded Roster	19,871	17,360	2,511	14.5%
3 Employers That Started Payroll Deductions	8,707	7,865	842	10.7%
4 Employers Facilitating Deductions (last 90 days)	8,160	7,368	792	10.7%
5 Exempted Employers	61,113	59,845	1,268	2.1%

Participants

6 Funded Accounts	233,965	226,703	7,262	3.2%
7 Payroll Contributing Accounts	253,027	244,534	8,493	3.5%
8 Multiple Employer Accounts	89,005	81,631	7,374	9.0%
9 Self-Enrolled Funded Accounts	863	814	49	6.0%
10 Effective Opt-Out Rate	30.36%	29.88%	0.48%	1.6%

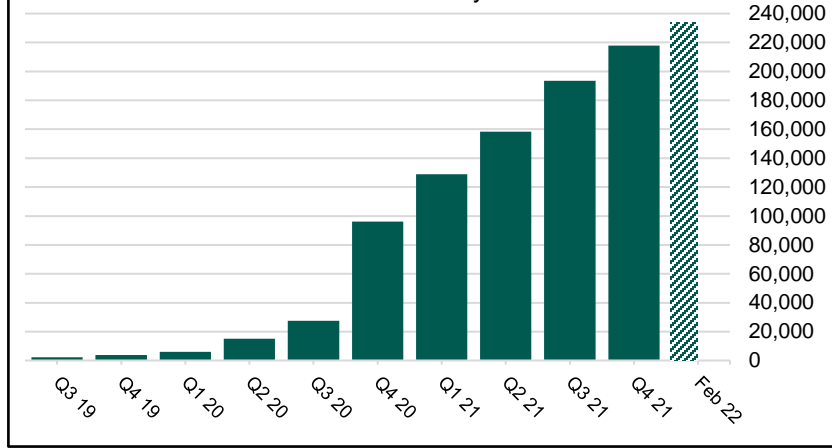
Funding

11 Total Assets	\$187,206,191	\$177,257,196	\$9,948,995	5.6%
12 Average Funded Account Balance	\$800	\$782	\$18	2.3%
13 Total Contributions Amount	\$218,921,375	\$202,134,184	\$16,787,191	8.3%
14 Average Monthly Contribution Amount	\$162	\$145	\$17	11.7%
15 Median Monthly Contribution Amount	\$127	\$112	\$14	12.7%
16 Average Contribution Rate	5.12%	5.13%	-0.01%	-0.1%
17 Amount of Withdrawals	\$26,779,792	\$23,901,548	\$2,878,244	12.0%
18 Accounts with a Full Withdrawal	35,465	33,316	2,149	6.5%
19 Accounts with a Partial Withdrawal	2,811	2,554	257	10.1%
20 Withdrawal Rate*	14.02%	13.62%	0.39%	2.9%

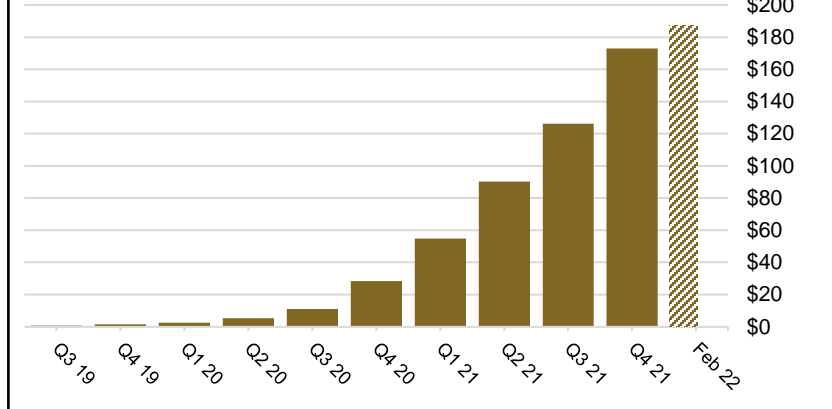
Status of Estimated Eligible Employers by Wave

Wave (Deadline)	Employers Registered	Employers Exempted	Total Employers Responded	Total Estimated Eligible Employers^	Employer Response Rate
Wave 1 (9/30/20)	1,687	5,584	7,271	7,832	92.8%
Wave 2 (6/30/21)	3,607	5,293	8,900	11,284	78.9%
Wave 3 (6/30/22)	25,101	50,236	75,337	268,017	28.1%
Total	30,395	61,113	91,508	287,133	31.9%

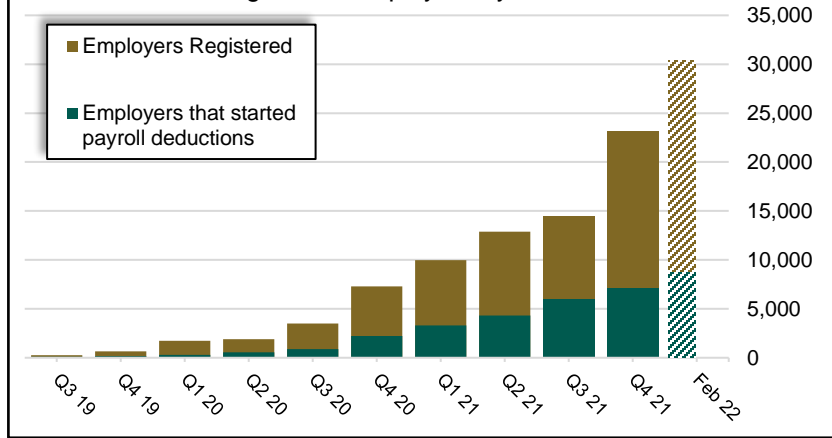
Funded Accounts by Quarter



Total Assets by Quarter
(millions)



Registered Employers by Quarter



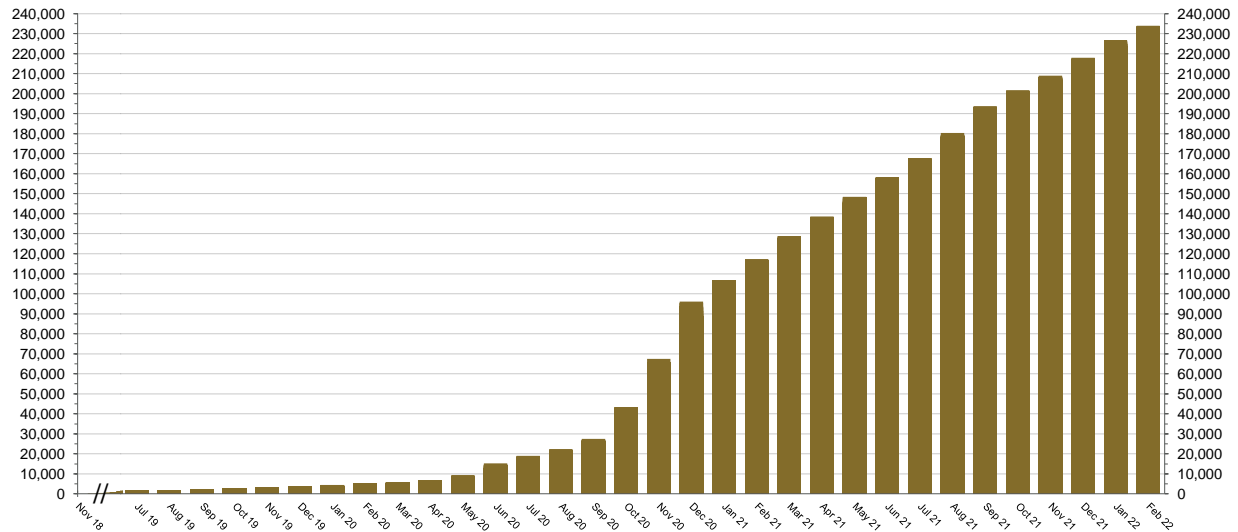
*The withdrawal rate is calculated as Accounts with a full withdrawal as a percent of Payroll Contributing Accounts

^Employer size is recalculated annually based on data obtained from the Employment Development Department. Data in the table above reflects the recalculation based on 2020 EDD reports.

Historic participation reports are available at: <https://www.treasurer.ca.gov/calsavers/reports.asp>

Chart 1: Funded Accounts

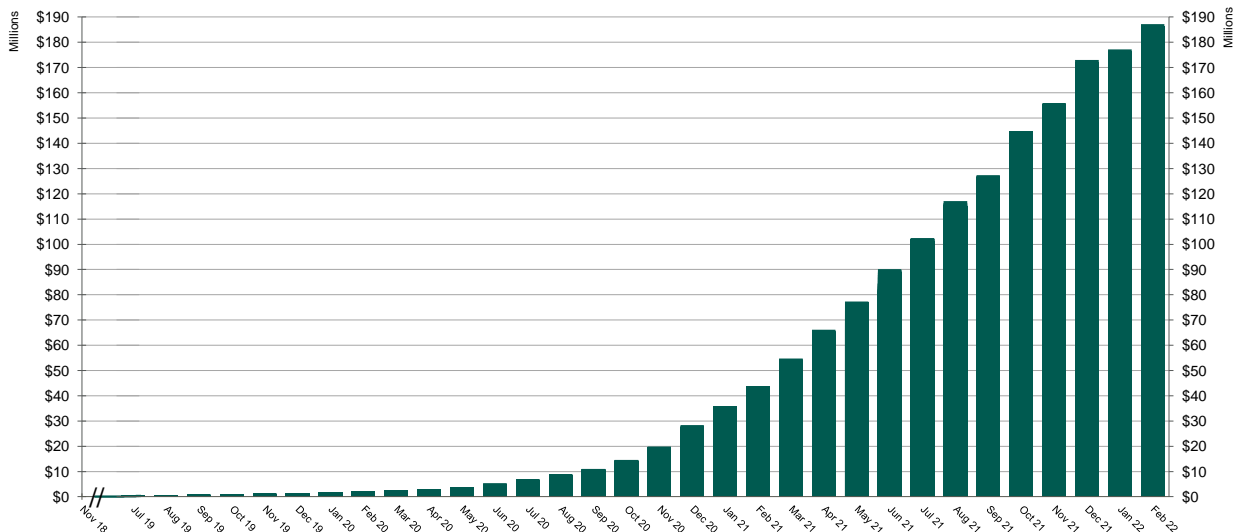
As of 2/28/22



The Program operated a limited scope pilot from November 2018 through June 2019 prior to full statewide launch on July 1, 2019.

Chart 2: Total Assets

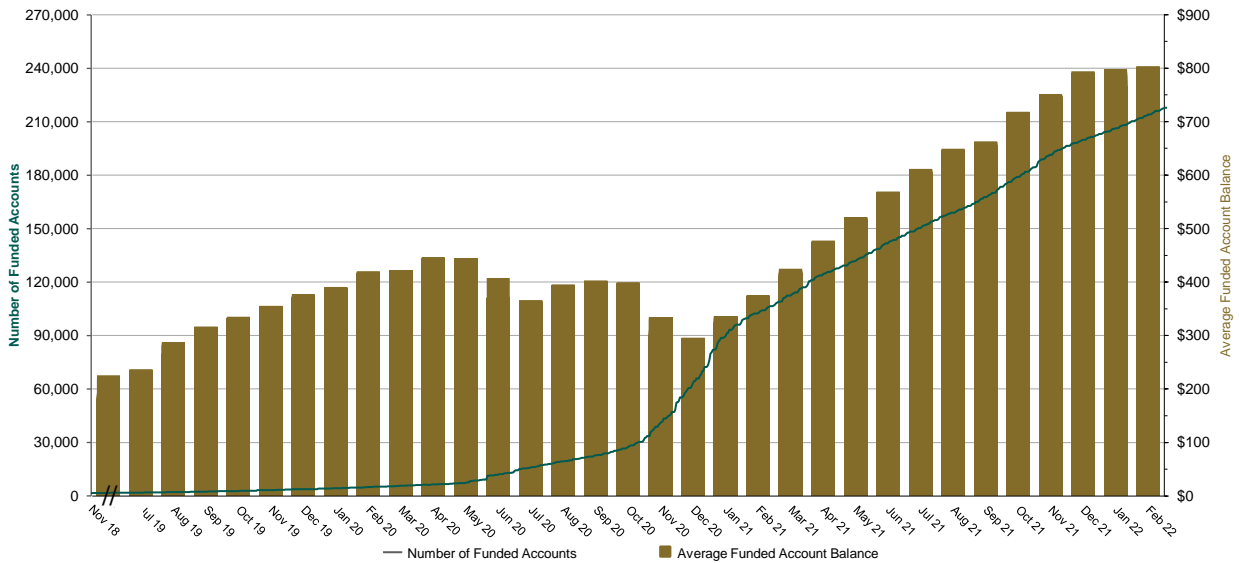
As of 2/28/22



The Program operated a limited scope pilot from November 2018 through June 2019 prior to full statewide launch on July 1, 2019.

Chart 3: Average Funded Account Balance

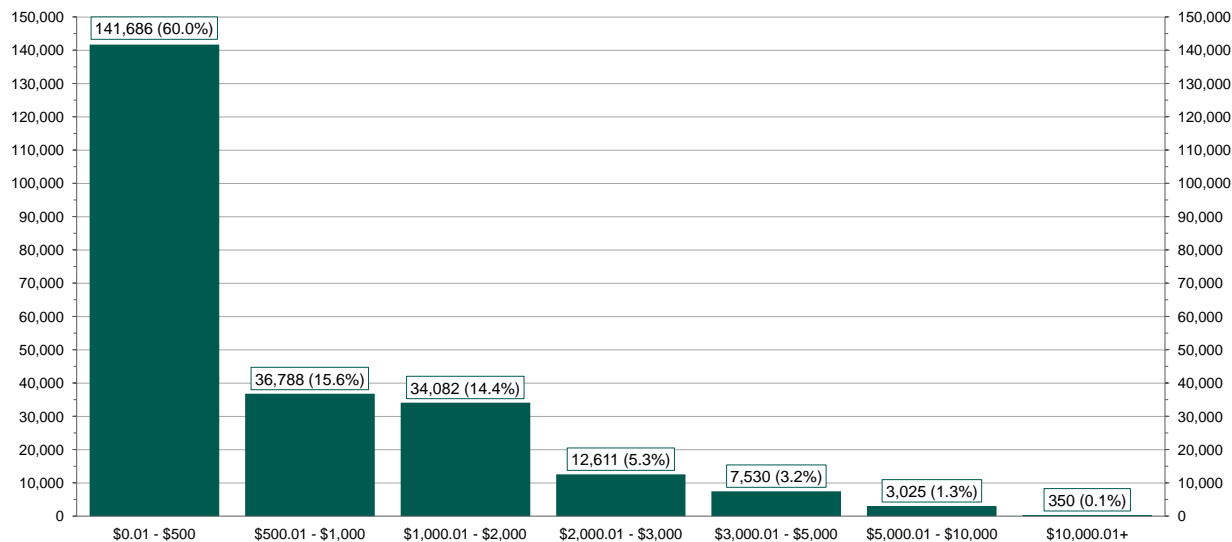
As of 2/28/22



The Program operated a limited scope pilot from November 2018 through June 2019 prior to full statewide launch on July 1, 2019.

Chart 4: Distribution of Accounts by Balance

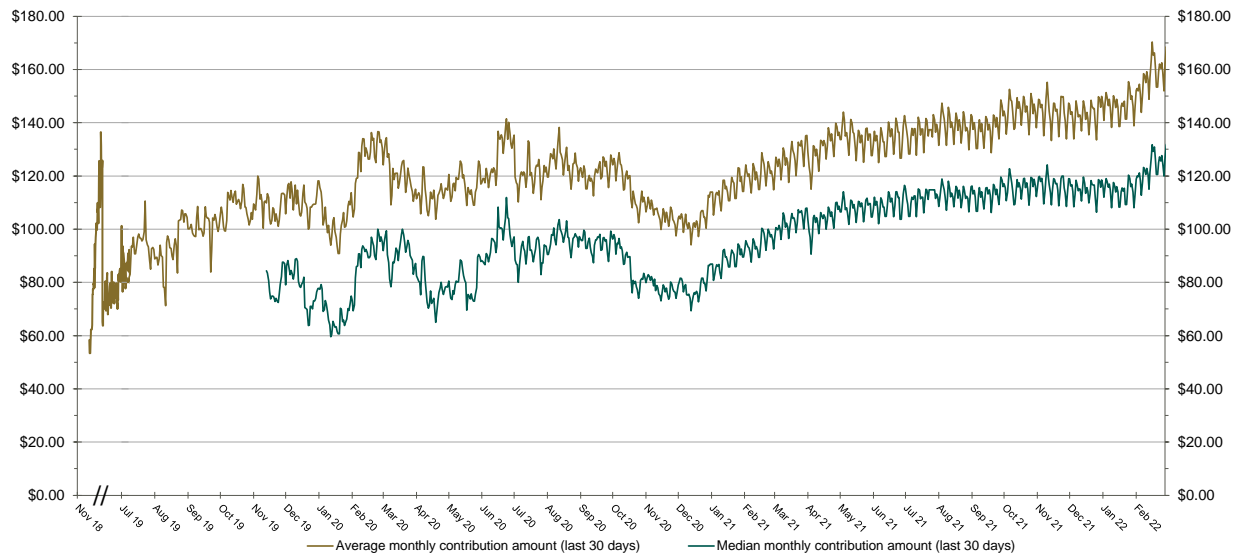
As of 2/28/22



The Program operated a limited scope pilot from November 2018 through June 2019 prior to full statewide launch on July 1, 2019.

Chart 5: Monthly Contributions Per Saver

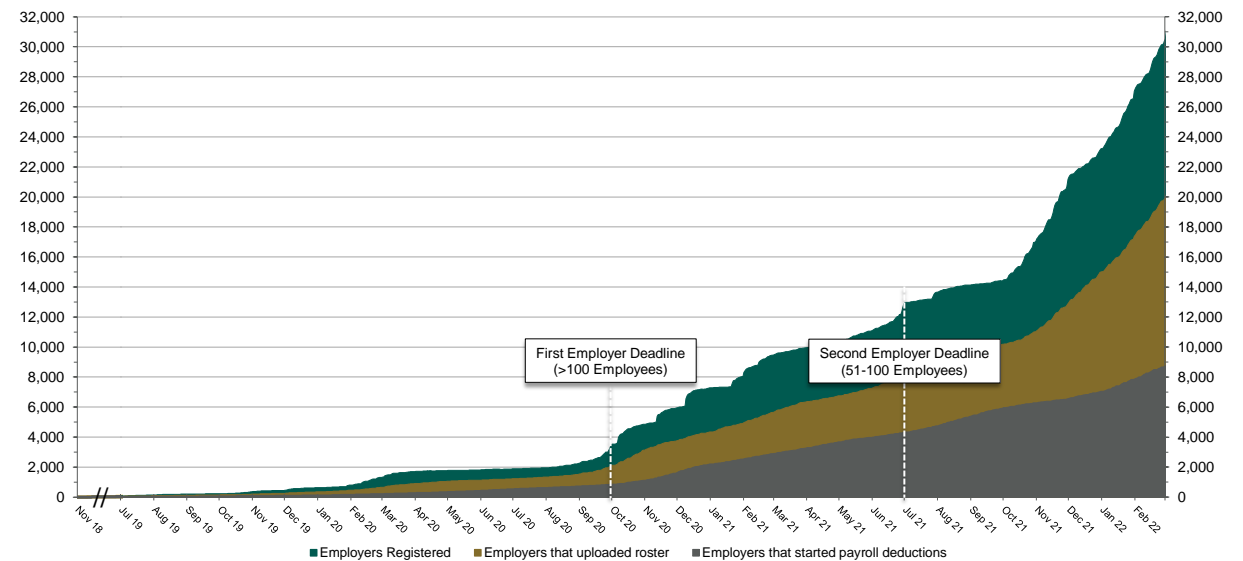
As of 2/28/22



The Program operated a limited scope pilot from November 2018 through June 2019 prior to full statewide launch on July 1, 2019.

Chart 6: Status of All Registered Employers

As of 2/28/22



The Program operated a limited scope pilot from November 2018 through June 2019 prior to full statewide launch on July 1, 2019.

Chart 7: Employer Status by Wave
As of 2/28/22

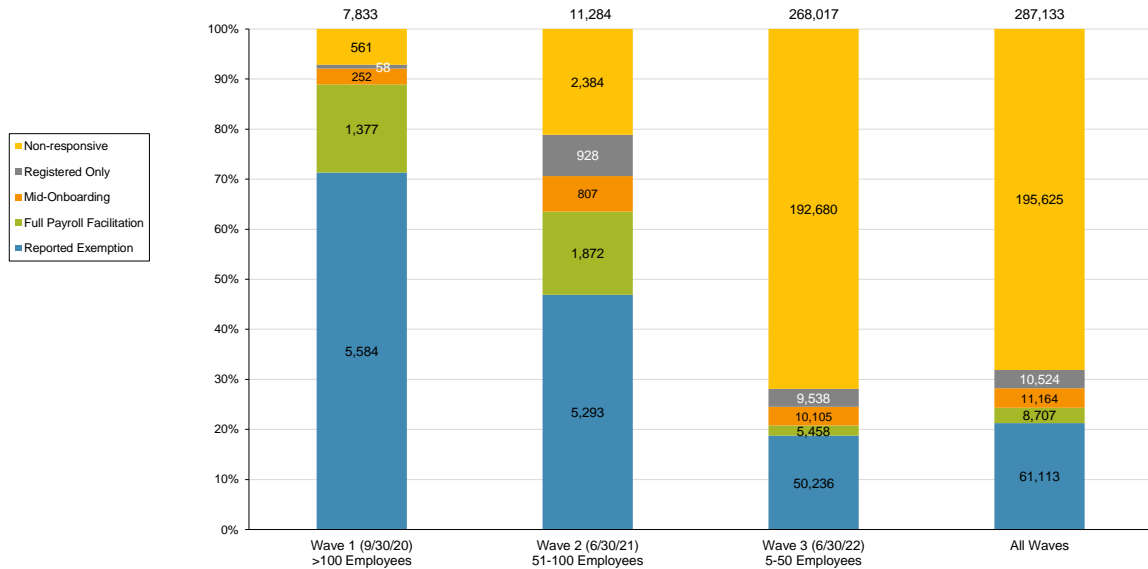
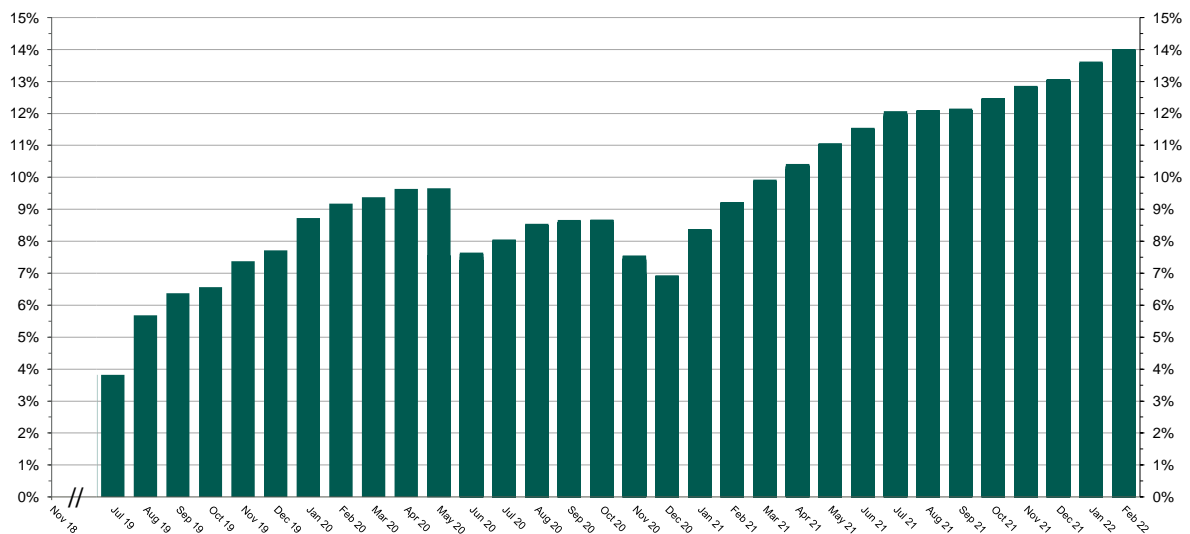


Chart 8: Accounts w/a Full Withdrawal as % of Payroll Contributing Accounts
As of 2/28/22



The Program operated a limited scope pilot from November 2018 through June 2019 prior to full statewide launch on July 1, 2019.