



CalSavers Retirement Savings Program Participation & Funding Snapshot as of 1/31/2024

Employer Registration Status Changes

Employer Status	1/31/2024	10/31/2023	Change	Percentage Change
Registered	133,569	121,661	11,908	9.8%
Uploaded Roster	119,245	111,913	7,332	6.6%
Started Payroll Deductions	48,172	45,725	2,447	5.4%
Facilitated Deductions in last 90 days	38,040	36,241	1,799	5.0%
Exempt	126,767	118,940	7,827	6.6%

Participant Savings and Enrollment Changes

Participant Account Status	1/31/2024	10/31/2023	Change	Percentage Change
Funded Accounts	484,859	462,951	21,908	4.7%
Payroll Contributing Accounts	536,497	510,564	25,933	5.1%
Multiple Employer Accounts*	74,969	69,287	5,682	8.2%
Self-Enrolled Funded Accounts	1,768	1,519	249	16.4%
Effective Opt-Out Rate	36.83%	35.93%	0.90%	2.5%

Status of Eligible Employers by Wave

Wave (Deadline)	Employers Registered	Employers Exempted	Total Employers Responded	Total Estimated Eligible Employers	Employer Response Rate
Post-Deadline Employers	131,305	117,103	248,408	281,886	88.1%
Wave 2024 (12/31/24)	8	2	10	N/A	N/A
Wave 4 (12/31/25)	2,256	9,662	11,918	N/A	N/A
Total	133,569	126,767	260,336	281,886	92.4%

* This data point reflects the number of funded account holders associated with more than one registered employer

** Withdrawal Rate is calculated as Accounts with a full withdrawal as a percent of Payroll Contributing Accounts

Funding Amounts and Withdrawals

Funding Amounts	1/31/2024	10/31/2023	Change	Percentage Change
Total Assets	\$765,695,409	\$614,558,520	\$151,136,889	24.6%
Average Funded Account Balance	\$1,579	\$1,327	\$252	19.0%
Total Contributions Amount	\$899,209,451	\$800,742,939	\$98,466,512	12.3%
Average Monthly Contribution Amount	\$190	\$183	\$7	3.8%
Median Monthly Contribution Amount	\$144	\$144	\$0	0.0%
Average Contribution Rate	5.22%	5.13%	0.09%	1.8%
Amount of Withdrawals	\$180,232,294	\$148,318,965	\$31,913,329	21.5%
Accounts with a Full Withdrawal	106,689	96,194	10,495	10.9%
Accounts with a Partial Withdrawal	15,769	13,530	2,239	16.5%
Withdrawal Rate**	19.89%	18.84%	1.05%	5.6%

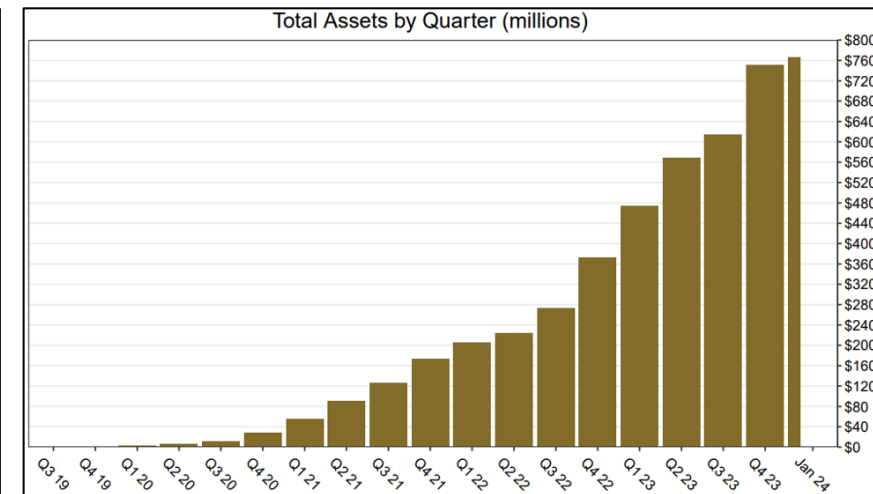
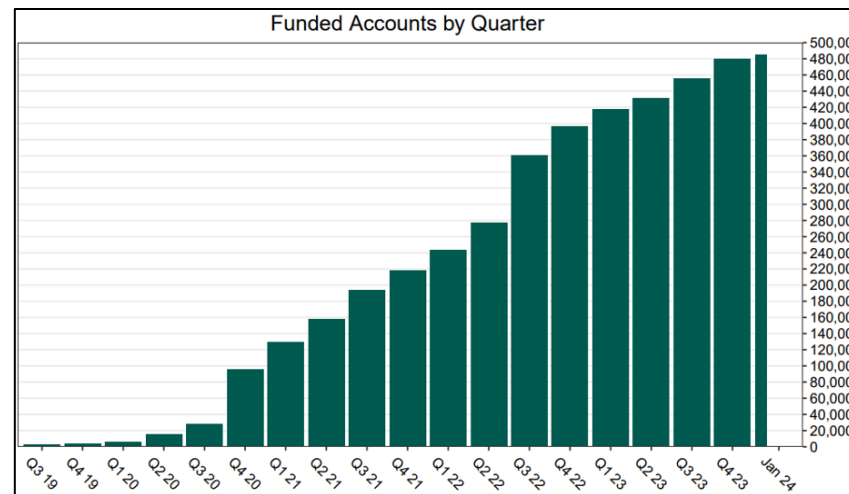
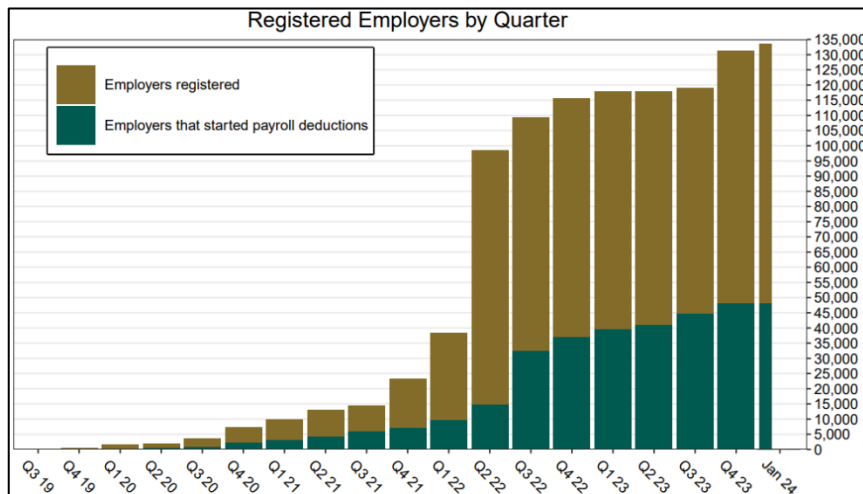
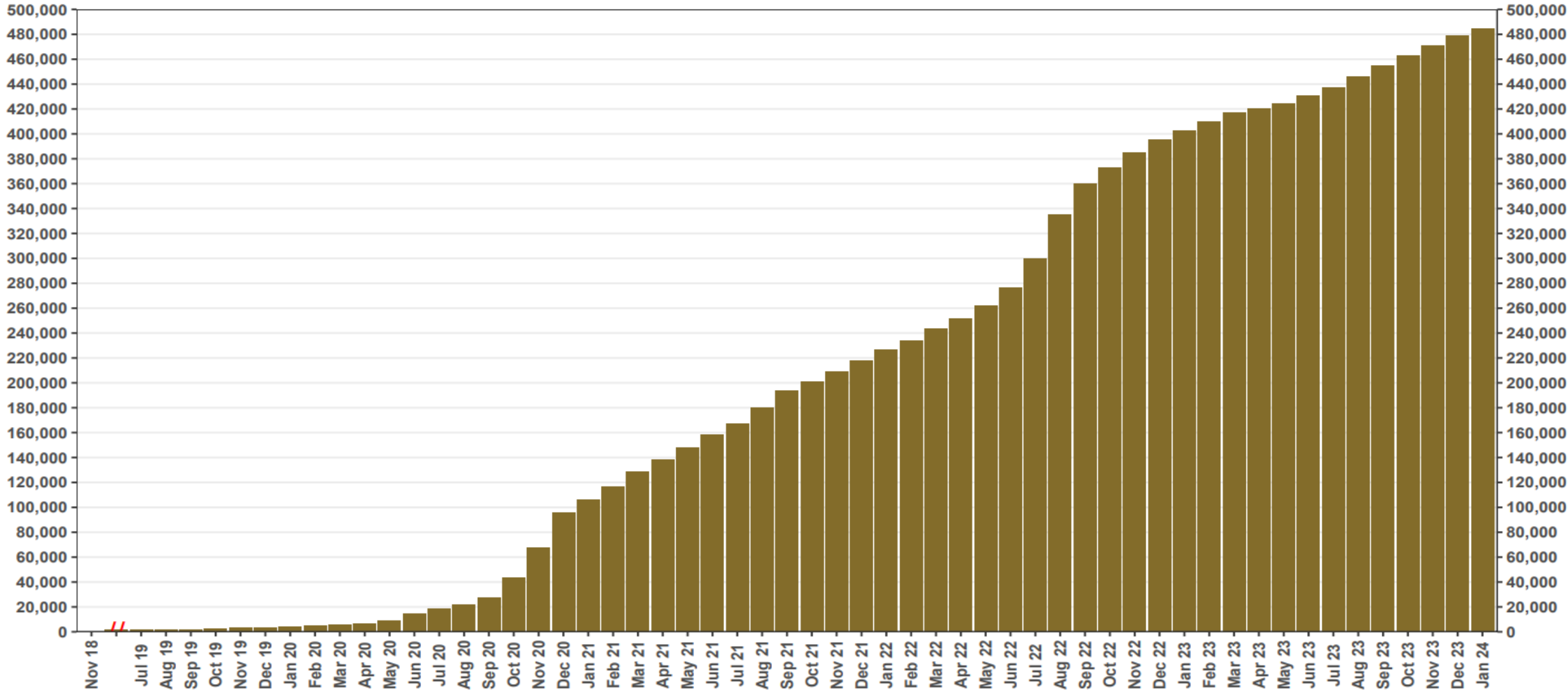


Chart 1: Funded Accounts

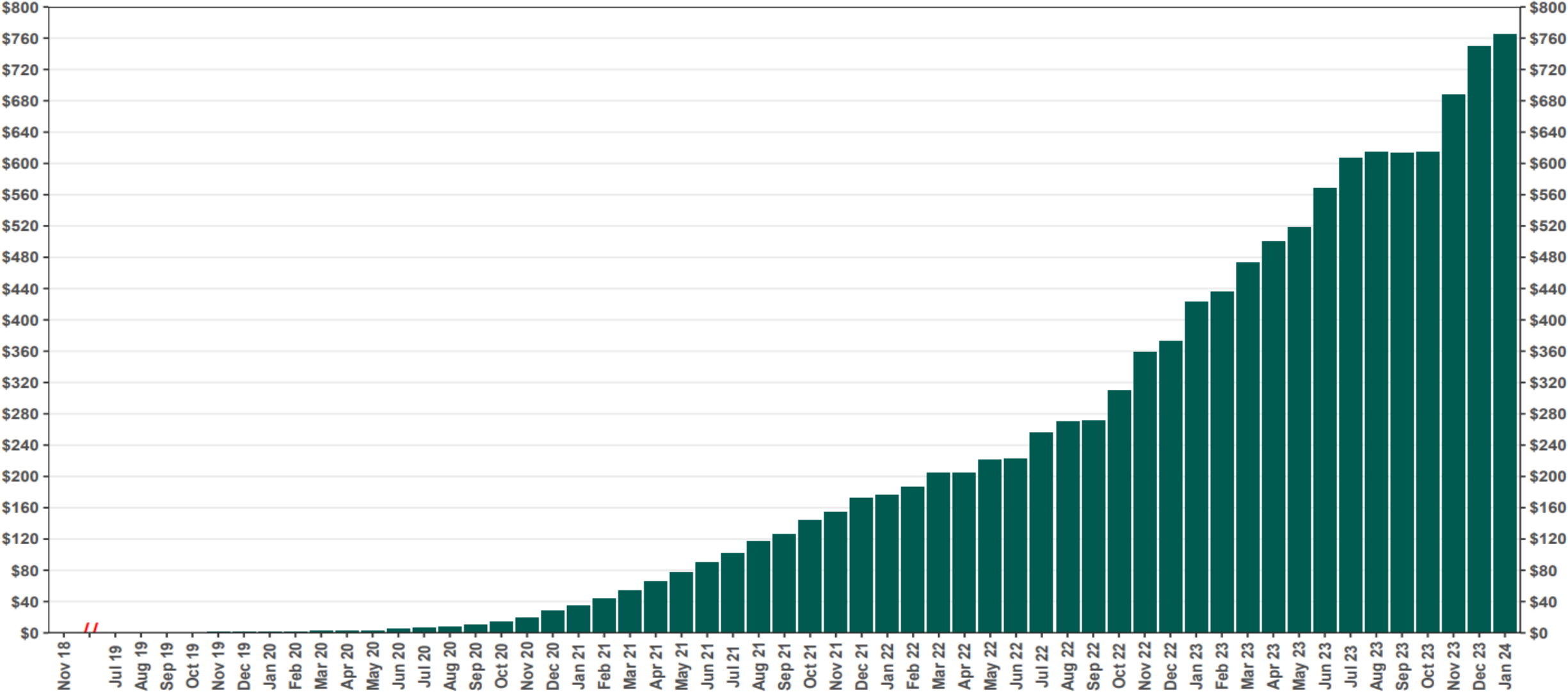
As of 1/31/24



The Program operated a limited scope pilot from November 2018 through June 2019 prior to full statewide launch on July 1, 2019.

Chart 2: Total Assets (millions)

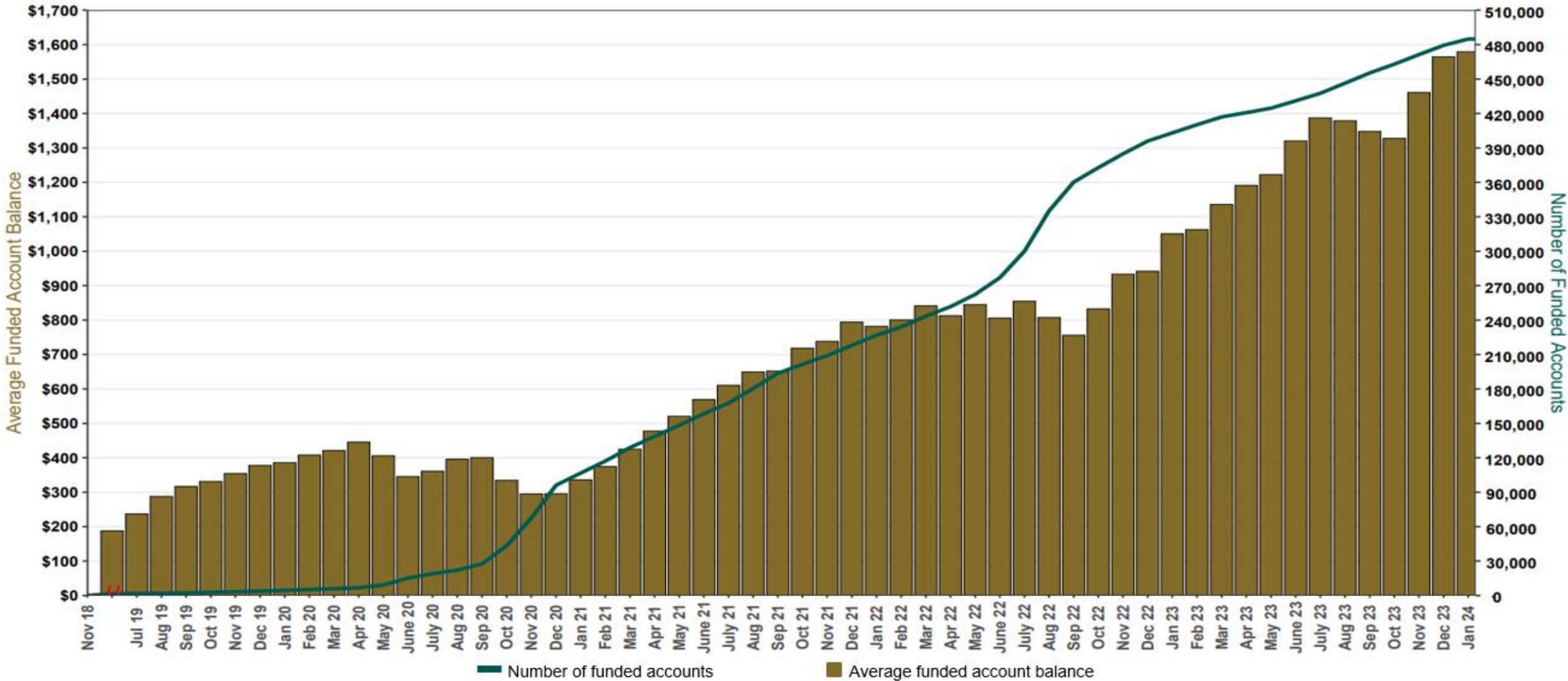
As of 1/31/24



The Program operated a limited scope pilot from November 2018 through June 2019 prior to full statewide launch on July 1, 2019.

Chart 3: Average Funded Account Balance

As of 1/31/24



The Program operated a limited scope pilot from November 2018 through June 2019 prior to full statewide launch on July 1, 2019.

Chart 4: Distribution of Accounts by Balance

As of 1/31/24

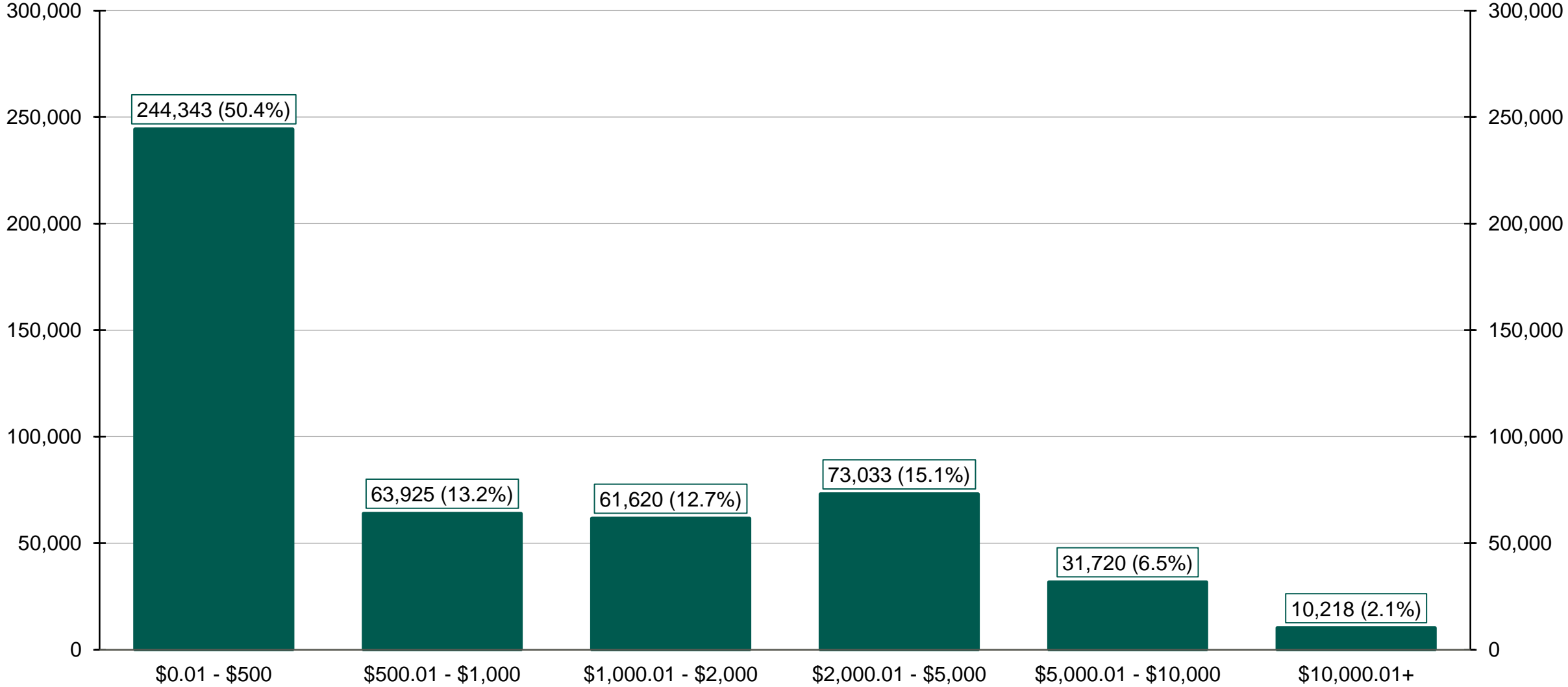
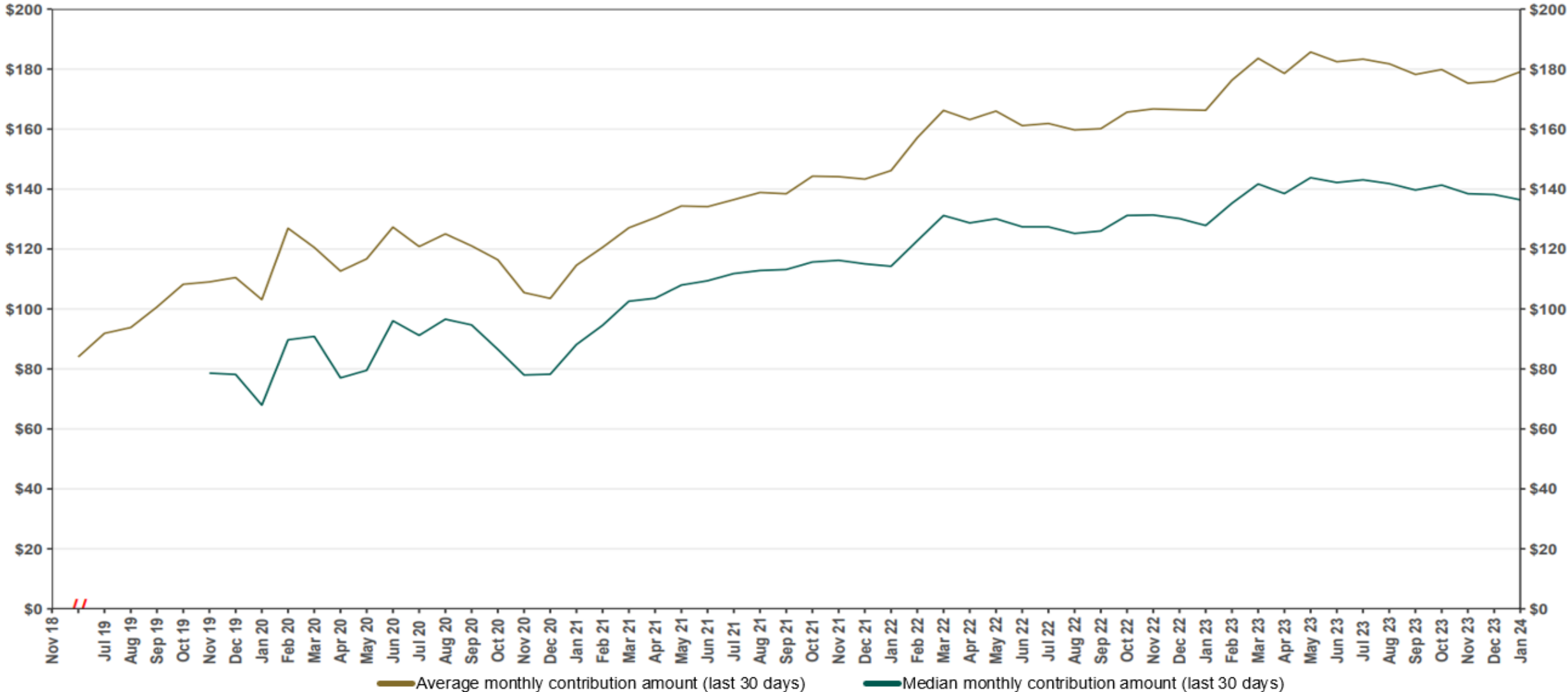


Chart 5: Monthly Contributions Per Saver

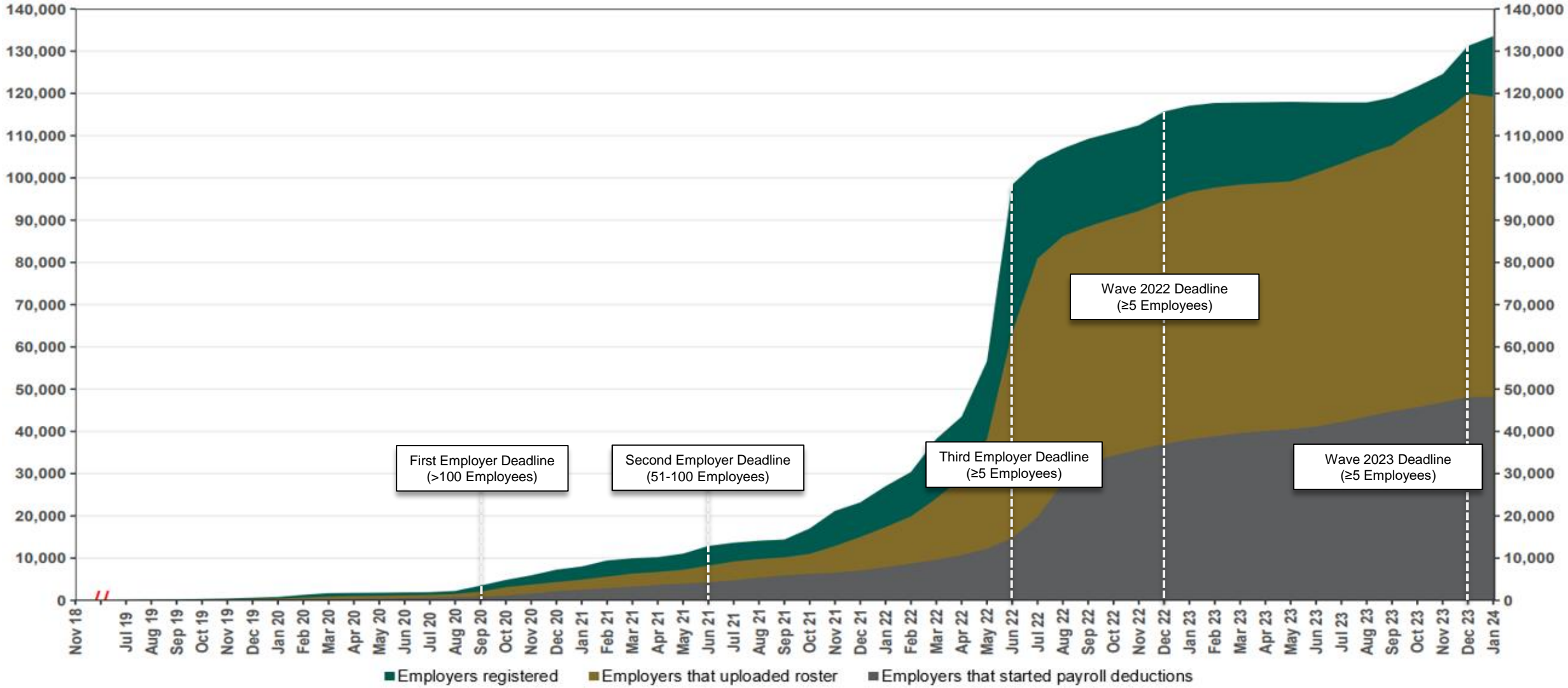
As of 1/31/24



The Program operated a limited scope pilot from November 2018 through June 2019 prior to full statewide launch on July 1, 2019.

Chart 6: Status of All Registered Employers

As of 1/31/24



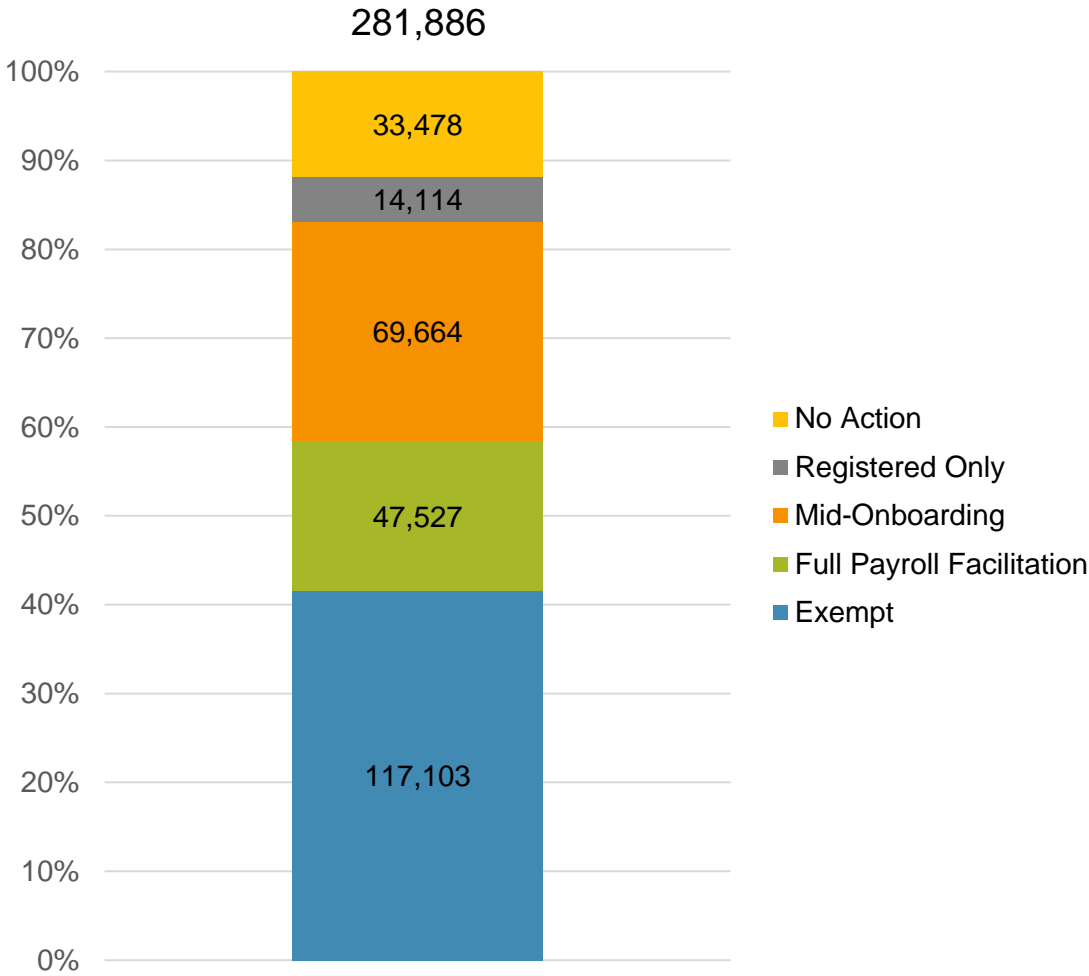
The Program operated a limited scope pilot from November 2018 through June 2019 prior to full statewide launch on July 1, 2019.

Chart 7: Employer Status by Wave Deadline

As of 1/31/24



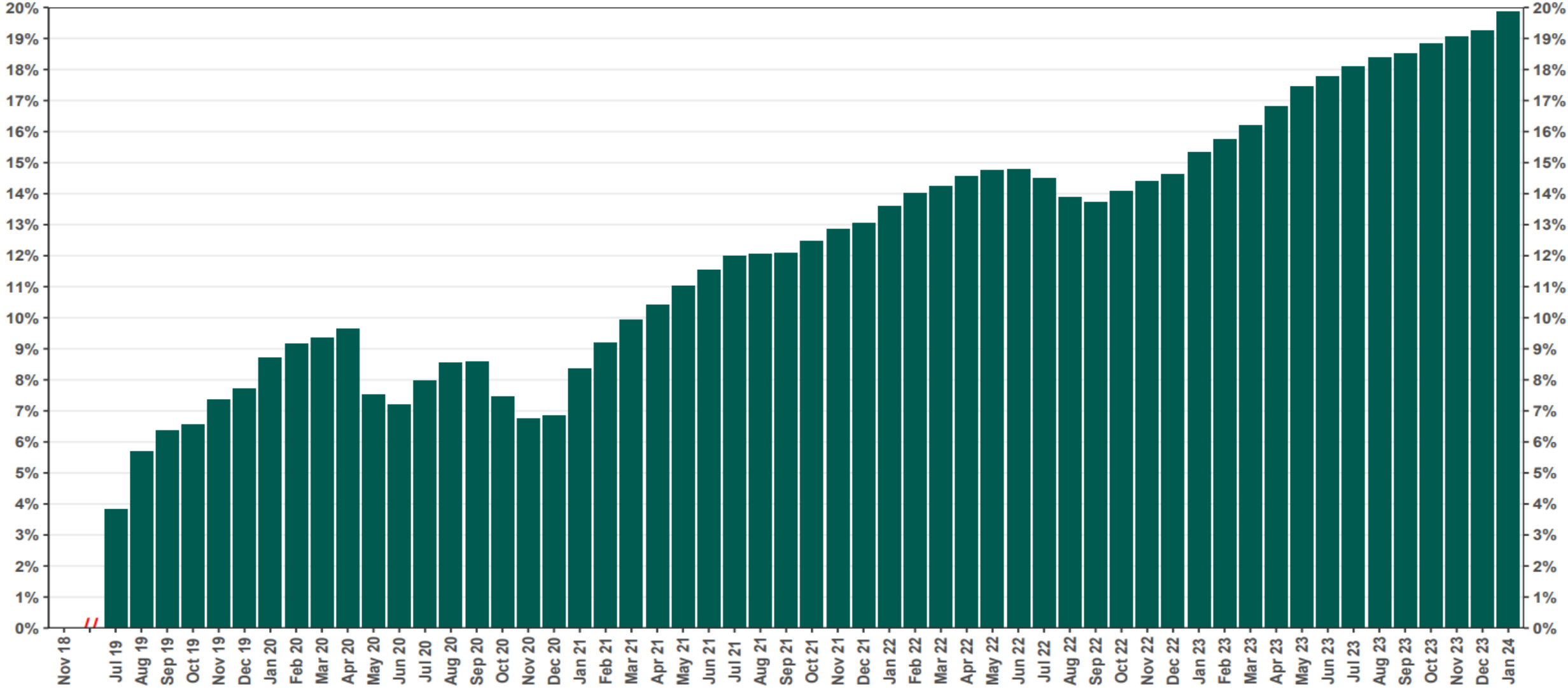
Post-Deadline Employers



* Early Action refers to employers who registered or reported an exemption prior to any notifications distribution.

Chart 8: Accounts w/ Full Withdrawal as % of Payroll Contributing Accounts

As of 1/31/24



The Program operated a limited scope pilot from November 2018 through June 2019 prior to full statewide launch on July 1, 2019.