



CalSavers Retirement Savings Program Participation & Funding Snapshot as of 3/31/2022

Employers	3/31/2022	2/28/2022	Change	% Change
1 Employers Registered	38,215	30,395	7,820	25.7%
2 Employers That Uploaded Roster	24,133	19,871	4,262	21.4%
3 Employers That Started Payroll Deductions	9,635	8,707	928	10.7%
4 Employers Facilitating Deductions (last 90 days)	8,963	8,160	803	9.8%
5 Exempted Employers	65,808	61,113	4,695	7.7%

Participants

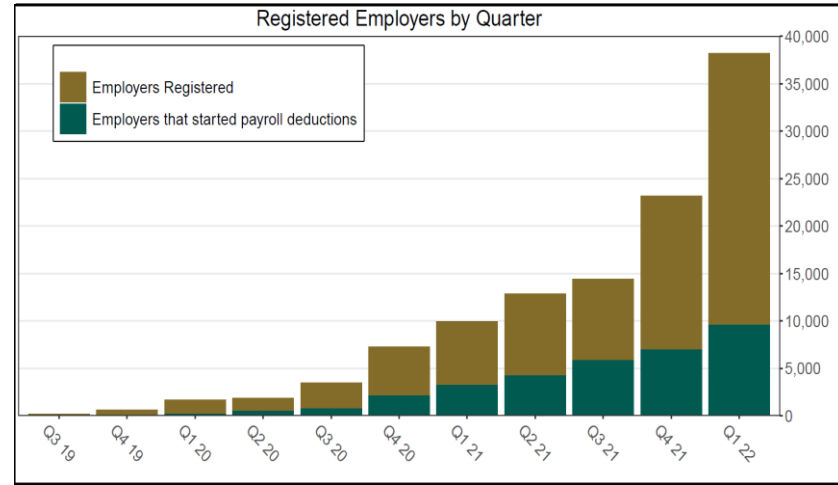
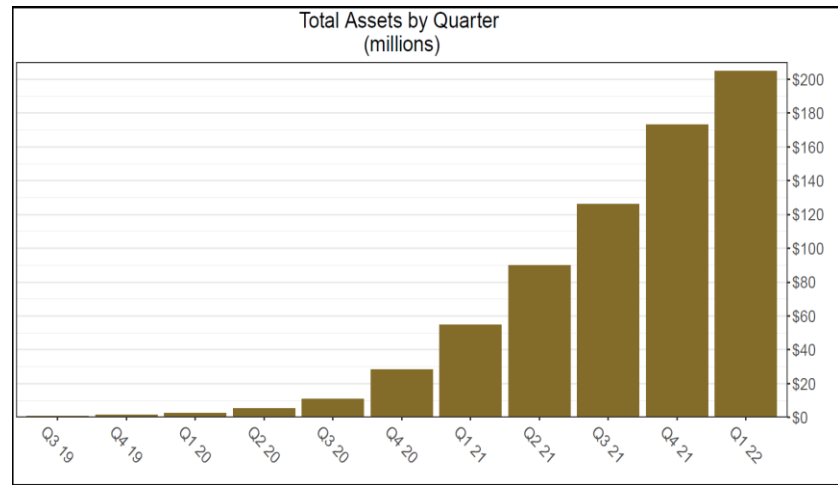
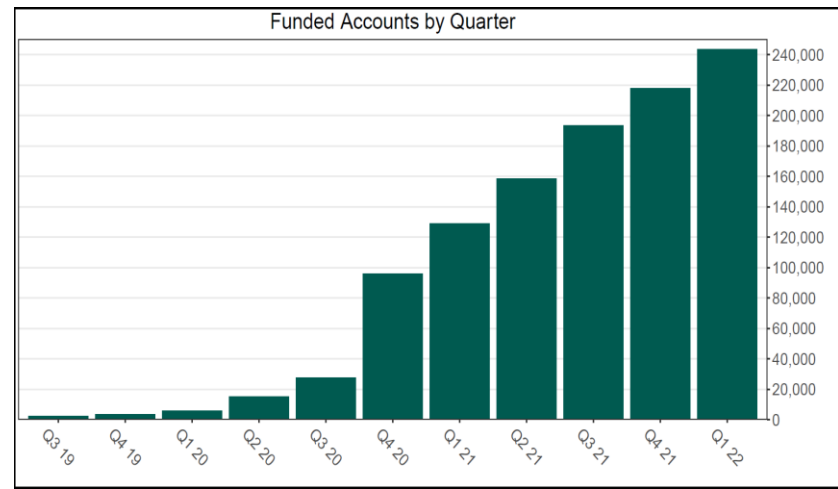
6 Funded Accounts	243,394	233,965	9,429	4.0%
7 Payroll Contributing Accounts	263,527	253,027	10,500	4.1%
8 Multiple Employer Accounts	96,173	89,005	7,168	8.1%
9 Self-Enrolled Funded Accounts	905	863	42	4.9%
10 Effective Opt-Out Rate	31.01%	30.36%	0.64%	2.1%

Funding

11 Total Assets	\$204,725,602	\$187,206,191	\$17,519,411	9.4%
12 Average Funded Account Balance	\$841	\$800	\$41	5.1%
13 Total Contributions Amount	\$238,352,515	\$218,921,375	\$19,431,139	8.9%
14 Average Monthly Contribution Amount	\$164	\$162	\$2	1.4%
15 Median Monthly Contribution Amount	\$130	\$127	\$3	2.5%
16 Average Contribution Rate	5.12%	5.12%	-0.01%	-0.1%
17 Amount of Withdrawals	\$30,065,635	\$26,779,792	\$3,285,843	12.3%
18 Accounts with a Full Withdrawal	37,590	35,465	2,125	6.0%
19 Accounts with a Partial Withdrawal	3,099	2,811	288	10.2%
20 Withdrawal Rate*	14.26%	14.02%	0.25%	1.8%

Status of Estimated Eligible Employers by Wave

Wave (Deadline)	Employers Registered	Employers Exempted	Total Employers Responded	Total Estimated Eligible Employers [^]	Employer Response Rate
Wave 1 (9/30/20)	1,681	5,603	7,284	7,834	93.0%
Wave 2 (6/30/21)	3,629	5,377	9,006	11,289	79.8%
Wave 3 (6/30/22)	32,905	54,828	87,733	268,075	32.7%
Total	38,215	65,808	104,023	287,198	36.2%



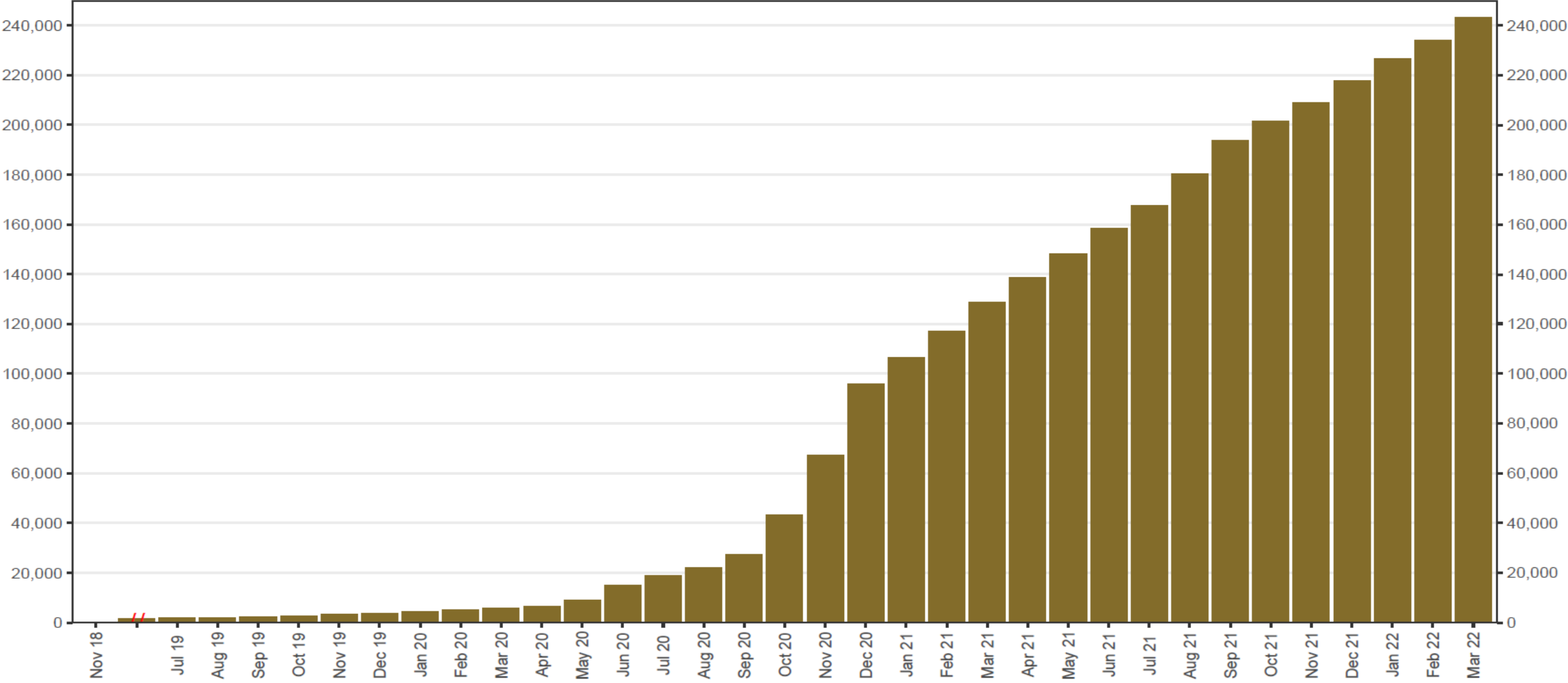
*The withdrawal rate is calculated as Accounts with a full withdrawal as a percent of Payroll Contributing Accounts

[^]Employer size is recalculated annually based on data obtained from the Employment Development Department. Data in the table above reflects the recalculation based on 2020 EDD reports.

Historic participation reports are available at: <https://www.treasurer.ca.gov/calsavers/reports.asp>

Chart 1: Funded Accounts

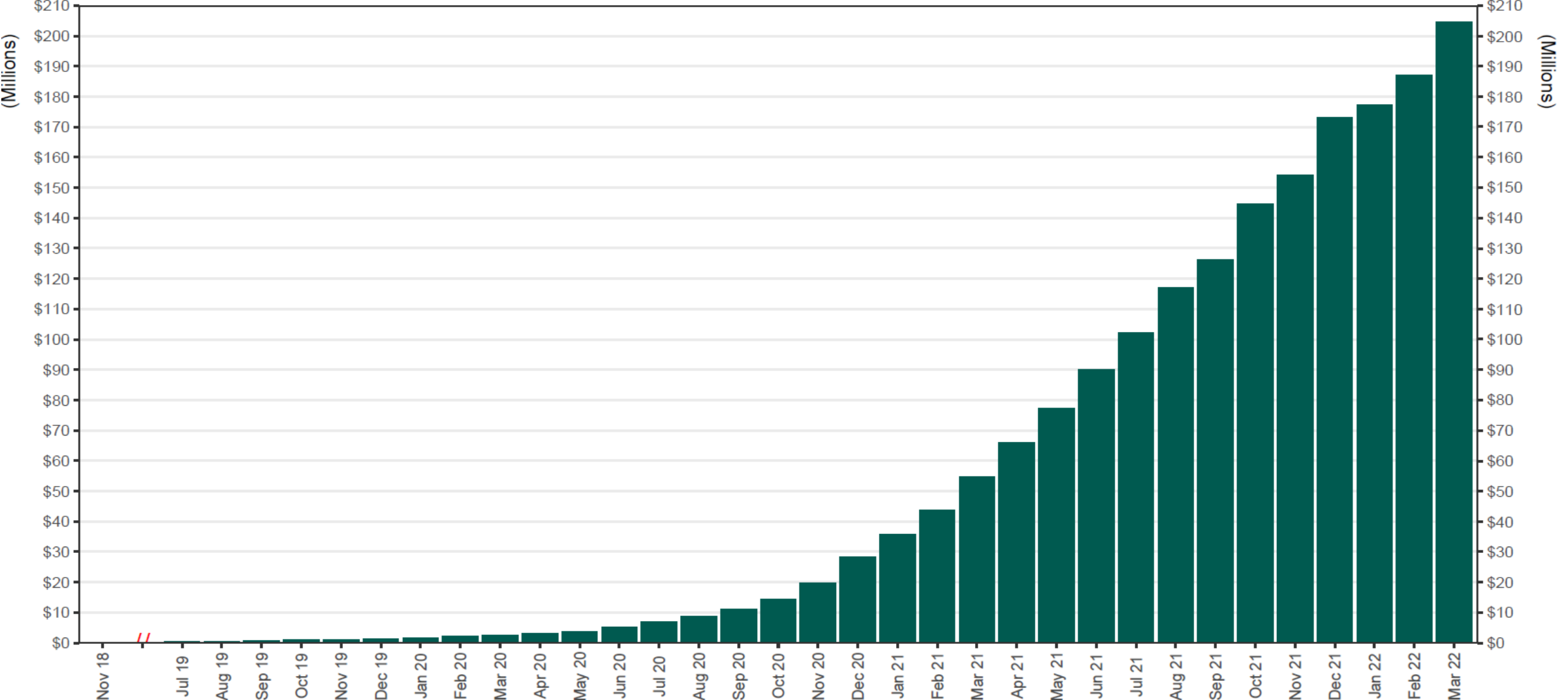
As of 3/31/22



The Program operated a limited scope pilot from November 2018 through June 2019 prior to full statewide launch on July 1, 2019.

Chart 2: Total Assets

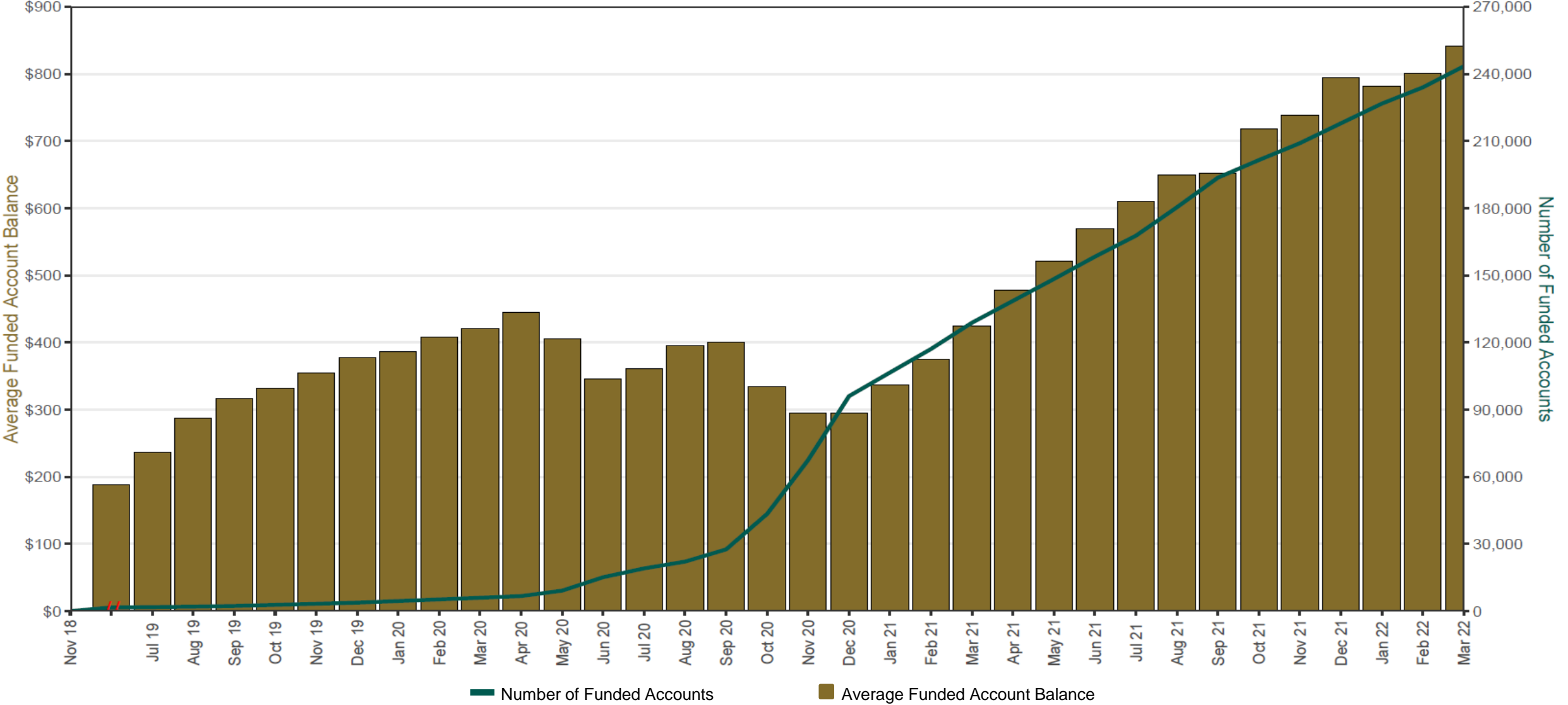
As of 3/31/22



The Program operated a limited scope pilot from November 2018 through June 2019 prior to full statewide launch on July 1, 2019.

Chart 3: Average Funded Account Balance

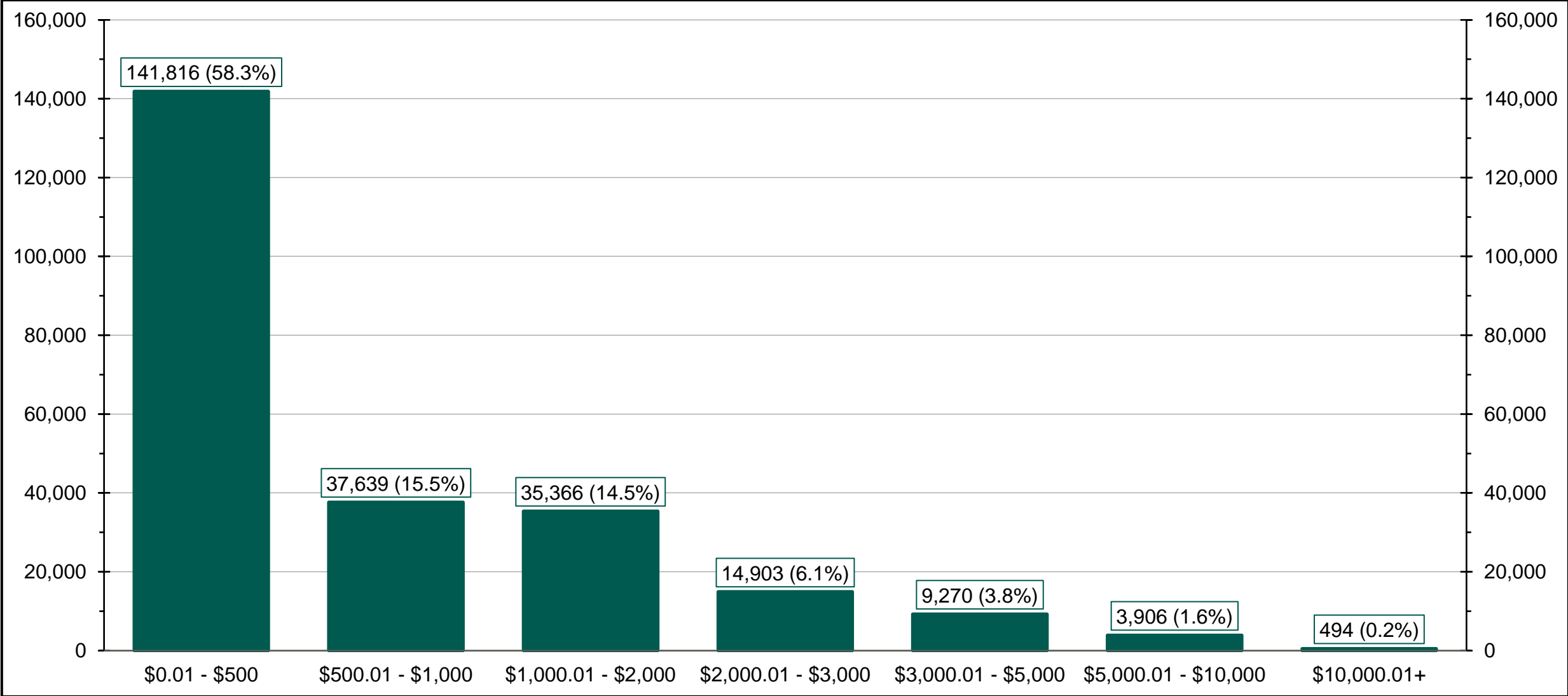
As of 3/31/22



The Program operated a limited scope pilot from November 2018 through June 2019 prior to full statewide launch on July 1, 2019.

Chart 4: Distribution of Accounts by Balance

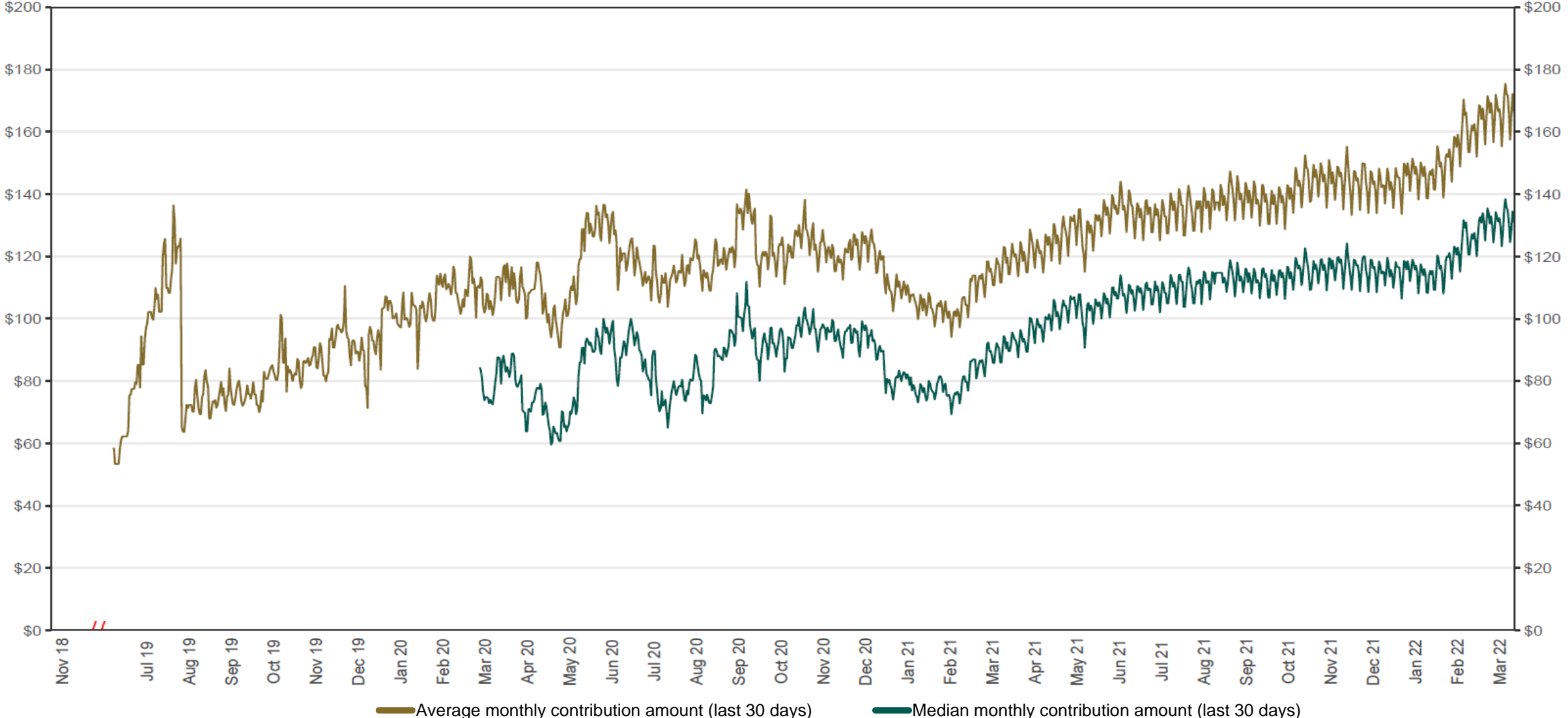
As of 3/31/22



The Program operated a limited scope pilot from November 2018 through June 2019 prior to full statewide launch on July 1, 2019.

Chart 5: Monthly Contributions Per Saver

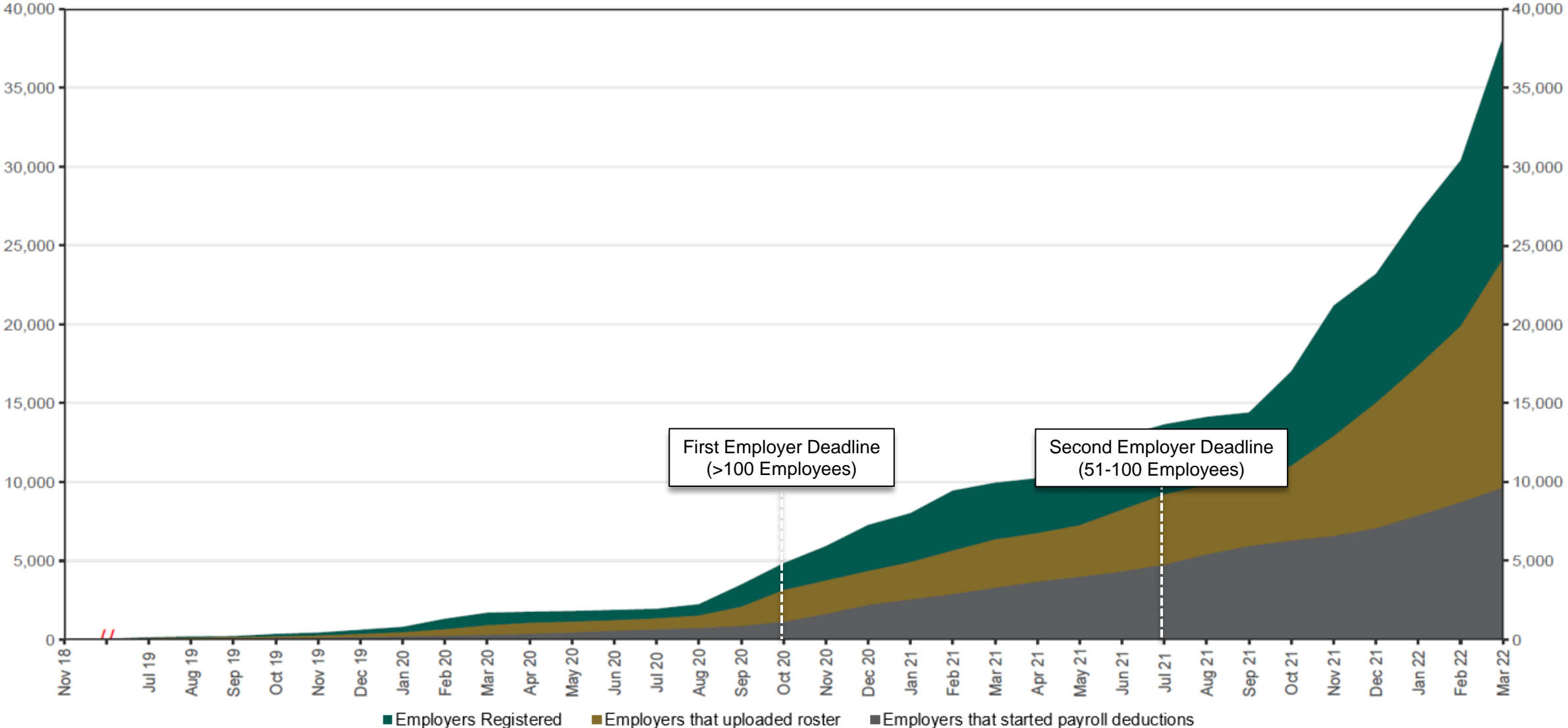
As of 3/31/22



The Program operated a limited scope pilot from November 2018 through June 2019 prior to full statewide launch on July 1, 2019.

Chart 6: Status of All Registered Employers

As of 3/31/22



The Program operated a limited scope pilot from November 2018 through June 2019 prior to full statewide launch on July 1, 2019.

Chart 7: Employer Status by Wave

As of 3/31/22

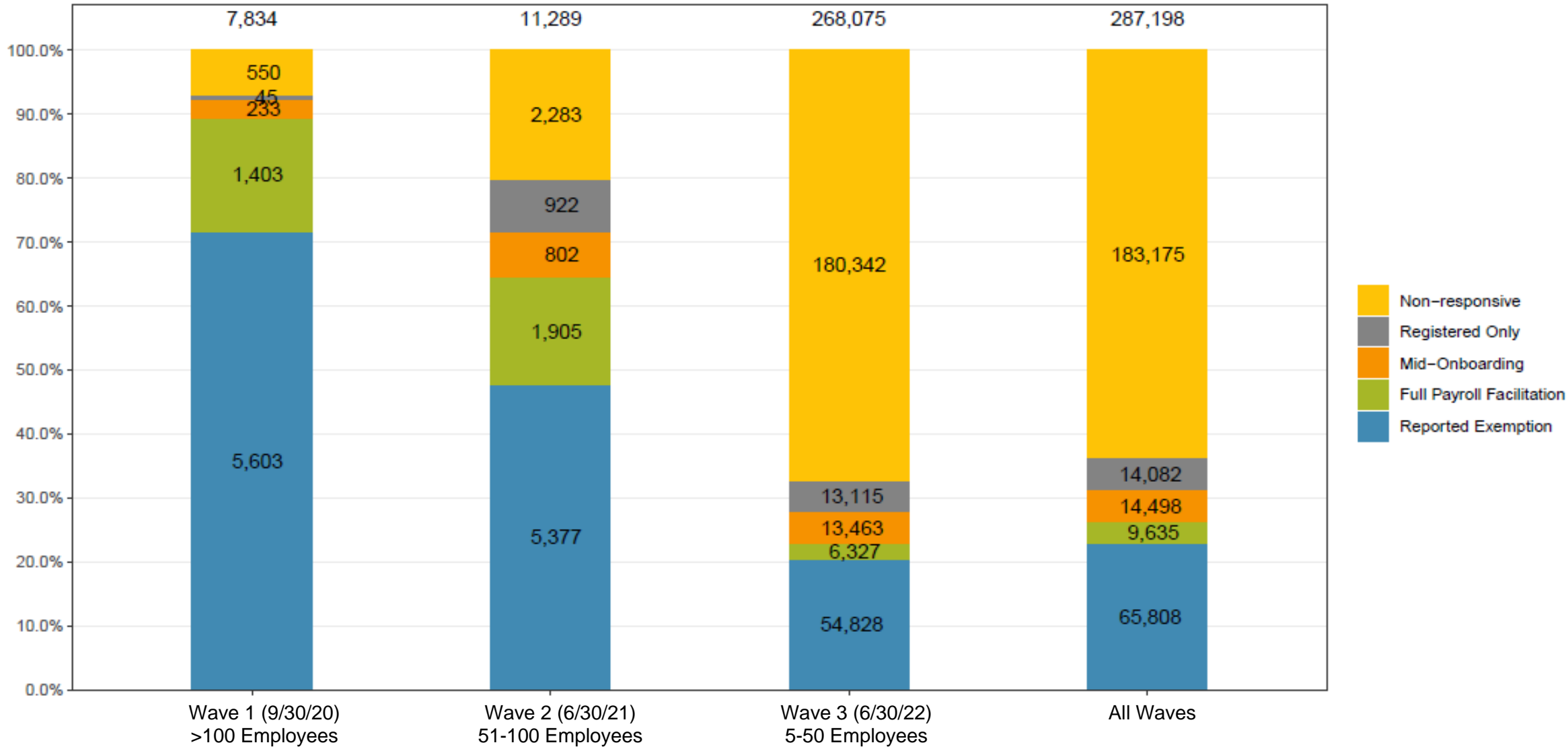
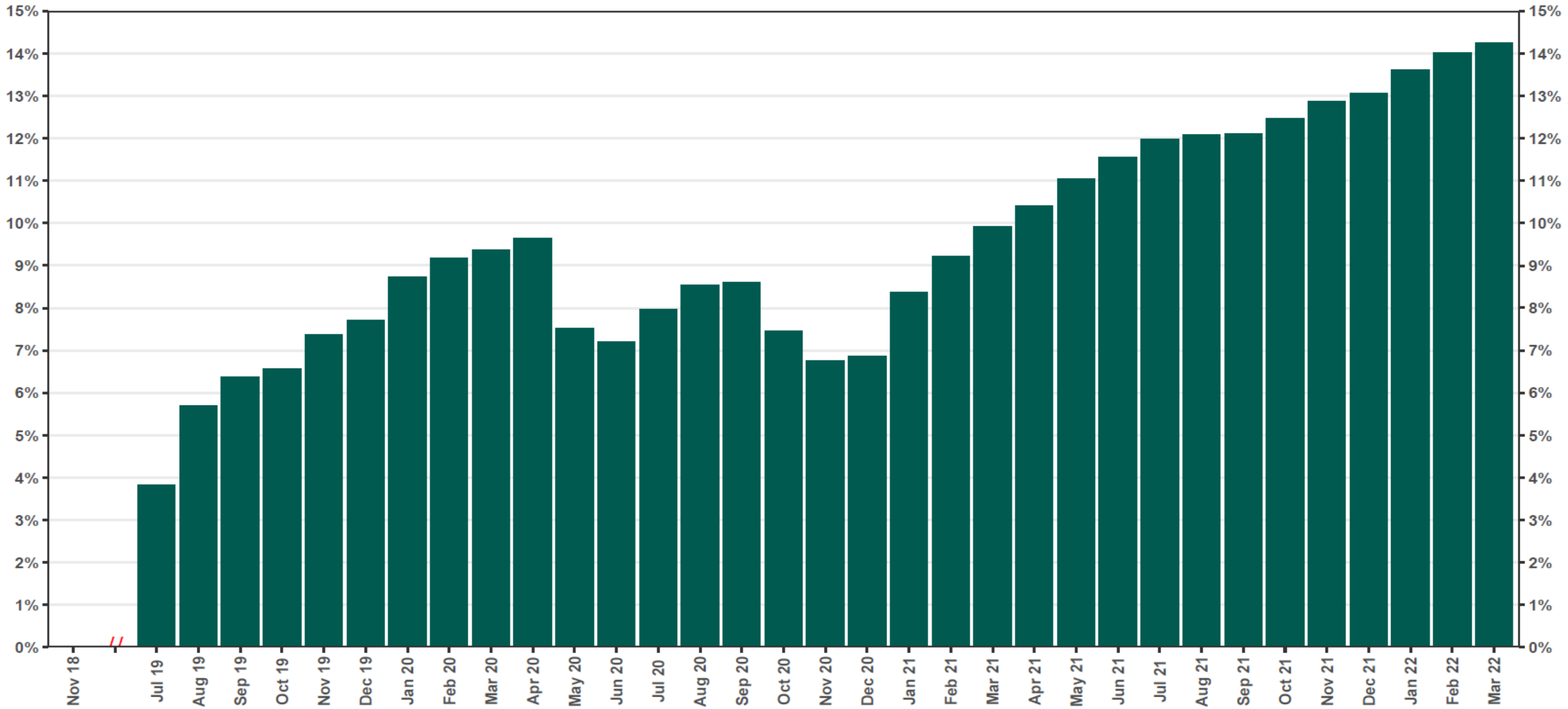


Chart 8: Accounts w/a Full Withdrawal as % of Payroll Contributing Accounts

As of 3/31/22



The Program operated a limited scope pilot from November 2018 through June 2019 prior to full statewide launch on July 1, 2019.