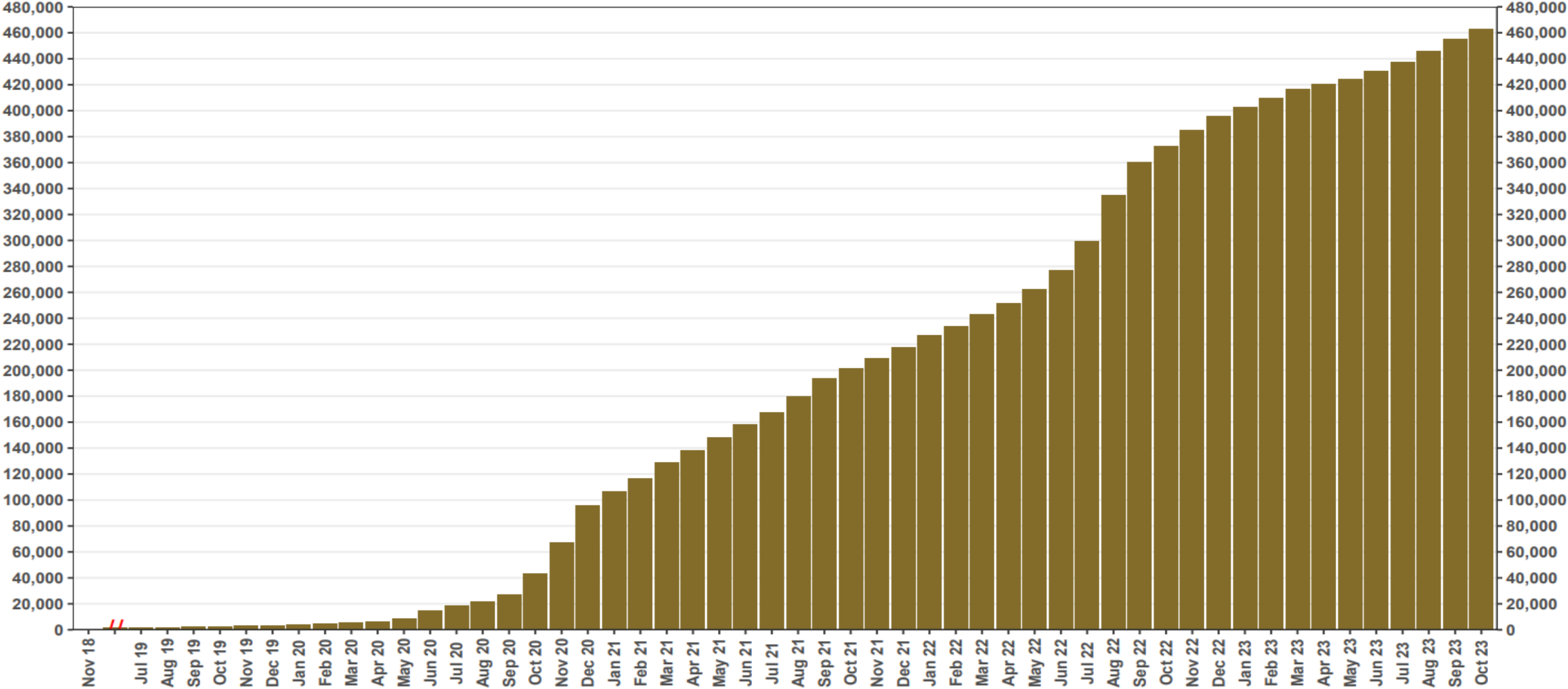


Chart 1: Funded Accounts

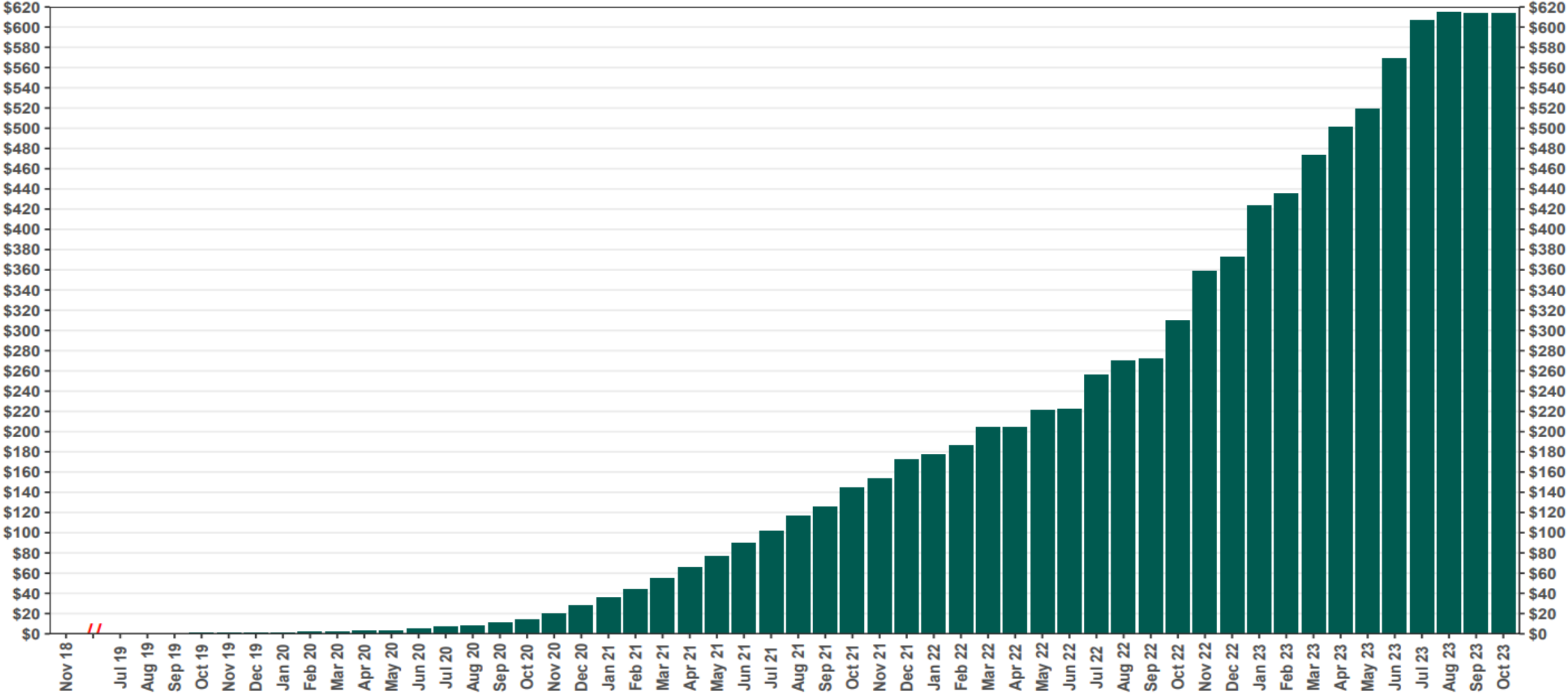
As of 10/31/23



The Program operated a limited scope pilot from November 2018 through June 2019 prior to full statewide launch on July 1, 2019.

Chart 2: Total Assets (millions)

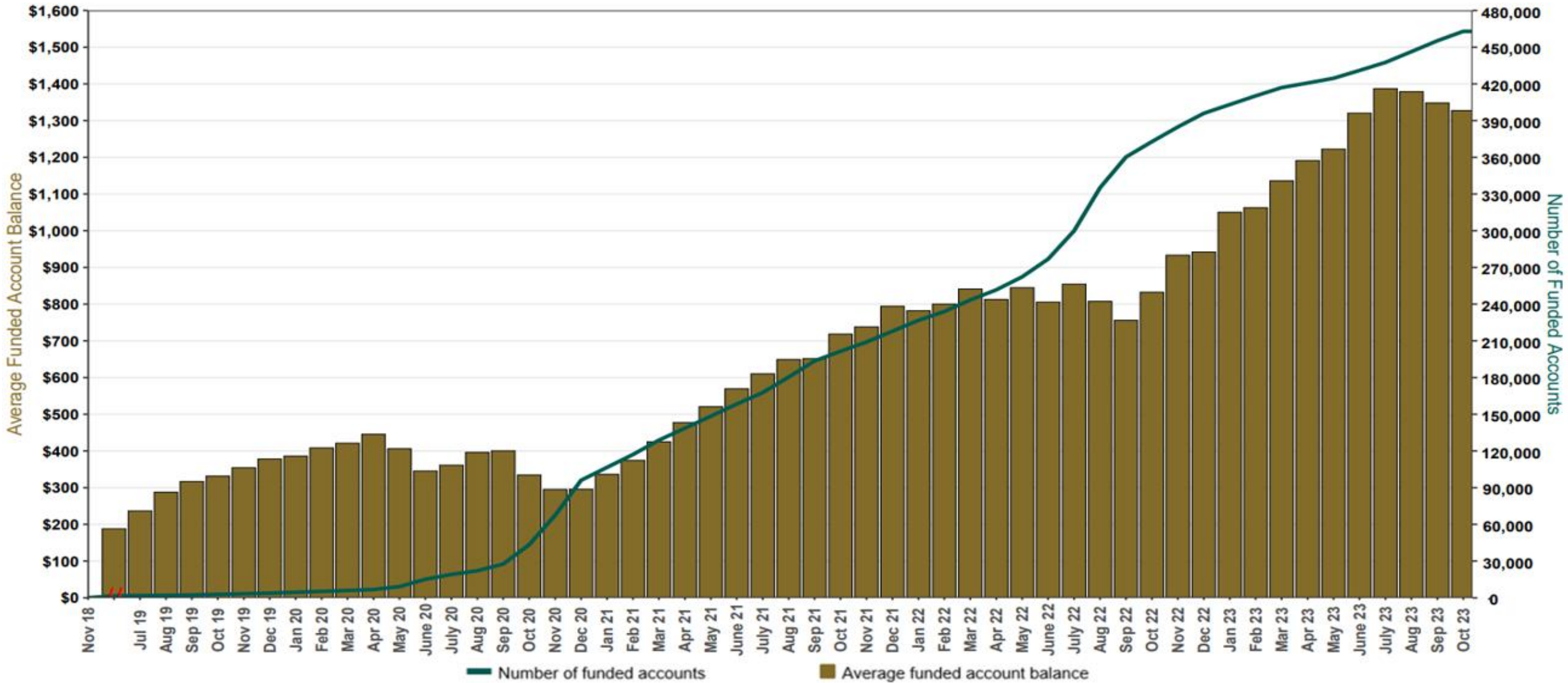
As of 10/31/23



The Program operated a limited scope pilot from November 2018 through June 2019 prior to full statewide launch on July 1, 2019.

Chart 3: Average Funded Account Balance

As of 10/31/23



The Program operated a limited scope pilot from November 2018 through June 2019 prior to full statewide launch on July 1, 2019.

Chart 4: Distribution of Accounts by Balance

As of 10/31/23

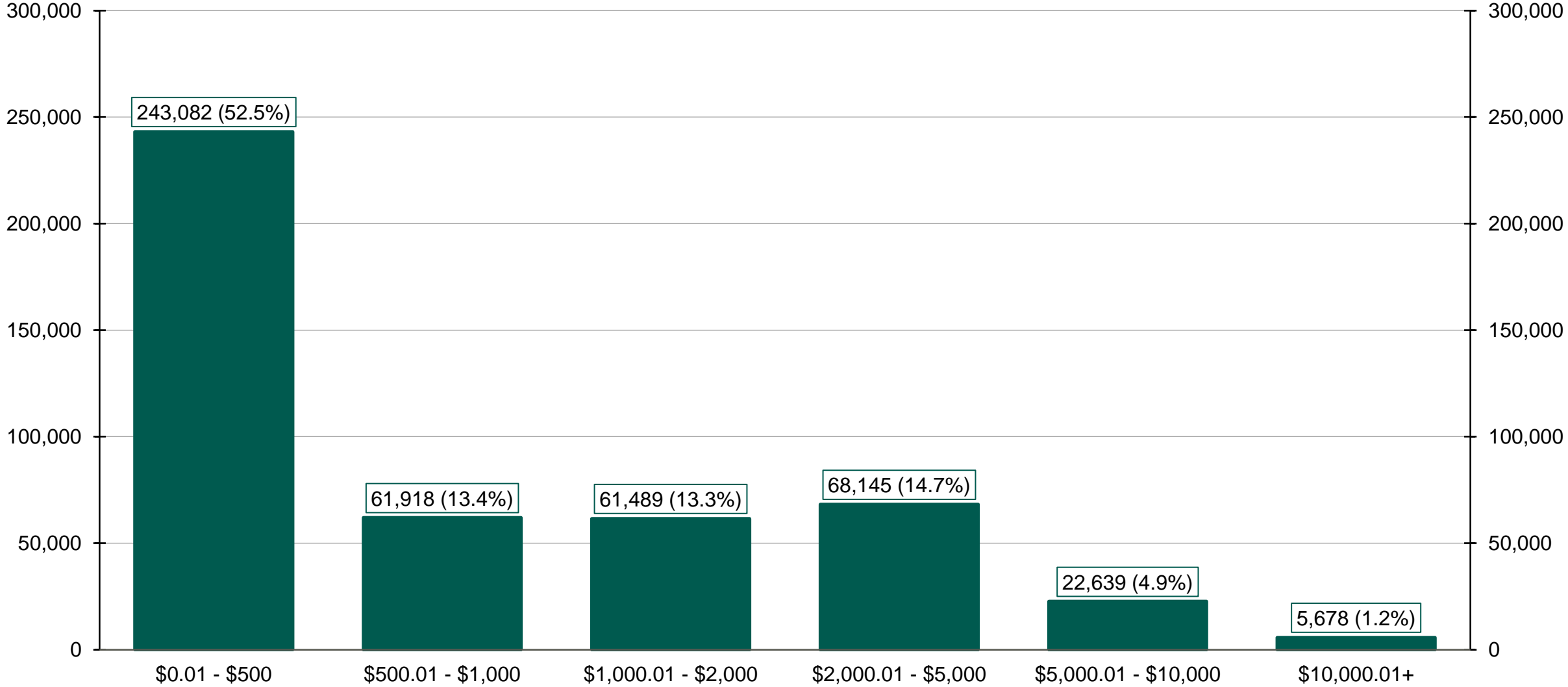
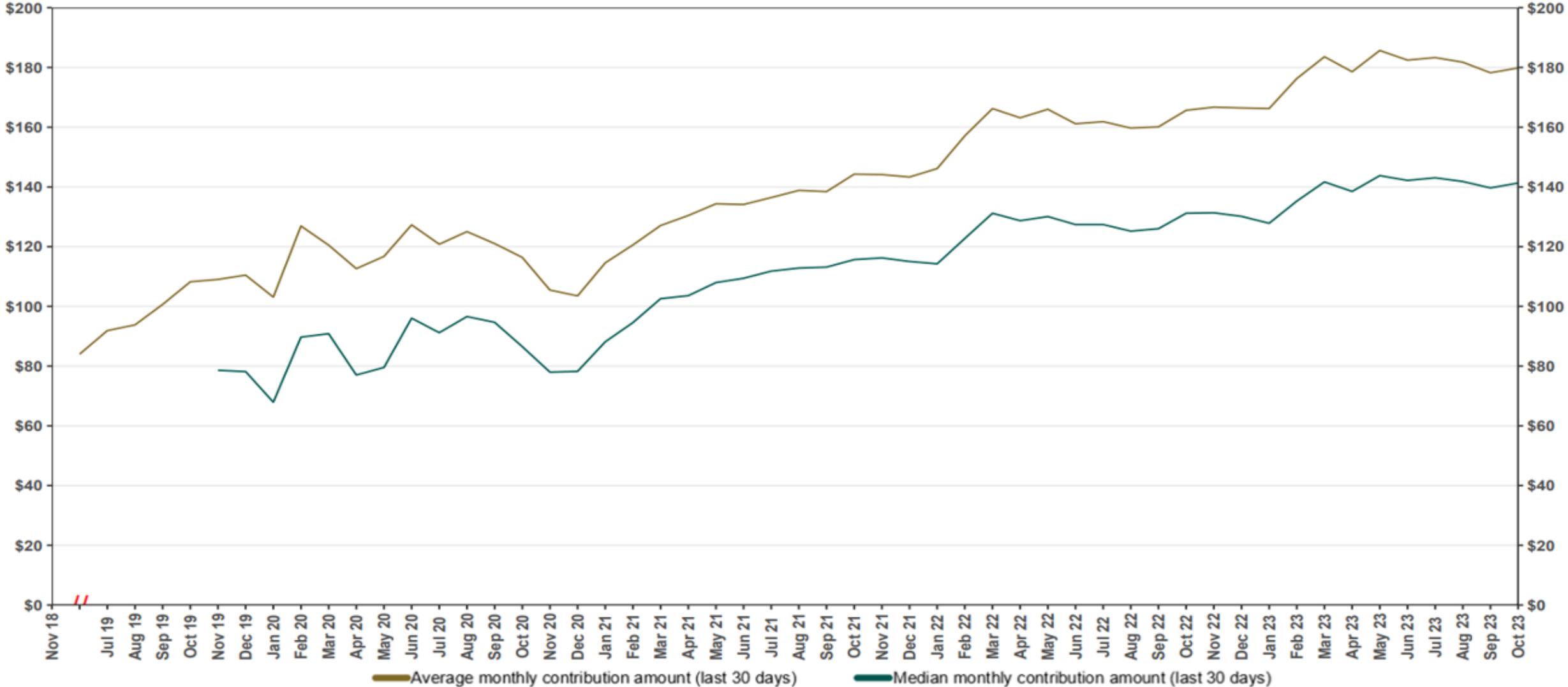


Chart 5: Monthly Contributions Per Saver

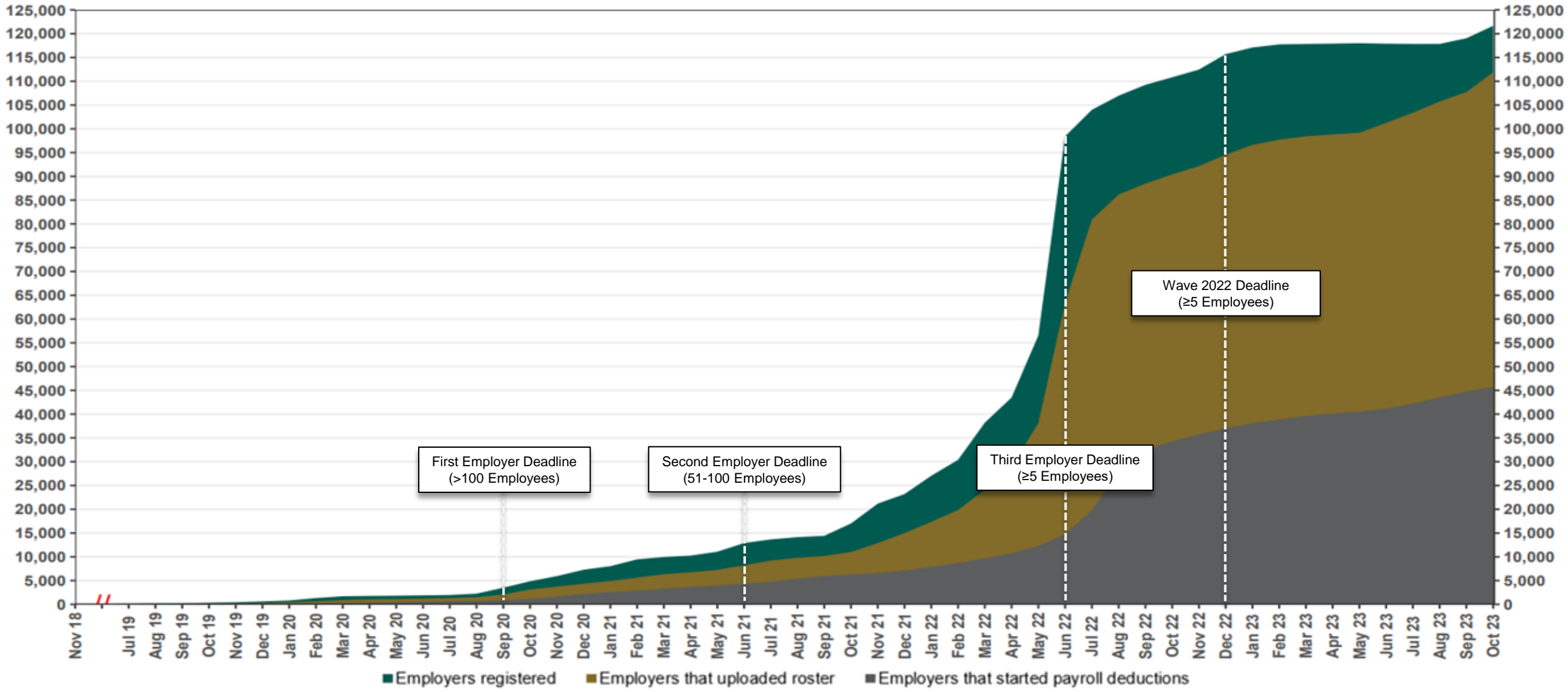
As of 10/31/23



The Program operated a limited scope pilot from November 2018 through June 2019 prior to full statewide launch on July 1, 2019.

Chart 6: Status of All Registered Employers

As of 10/31/23



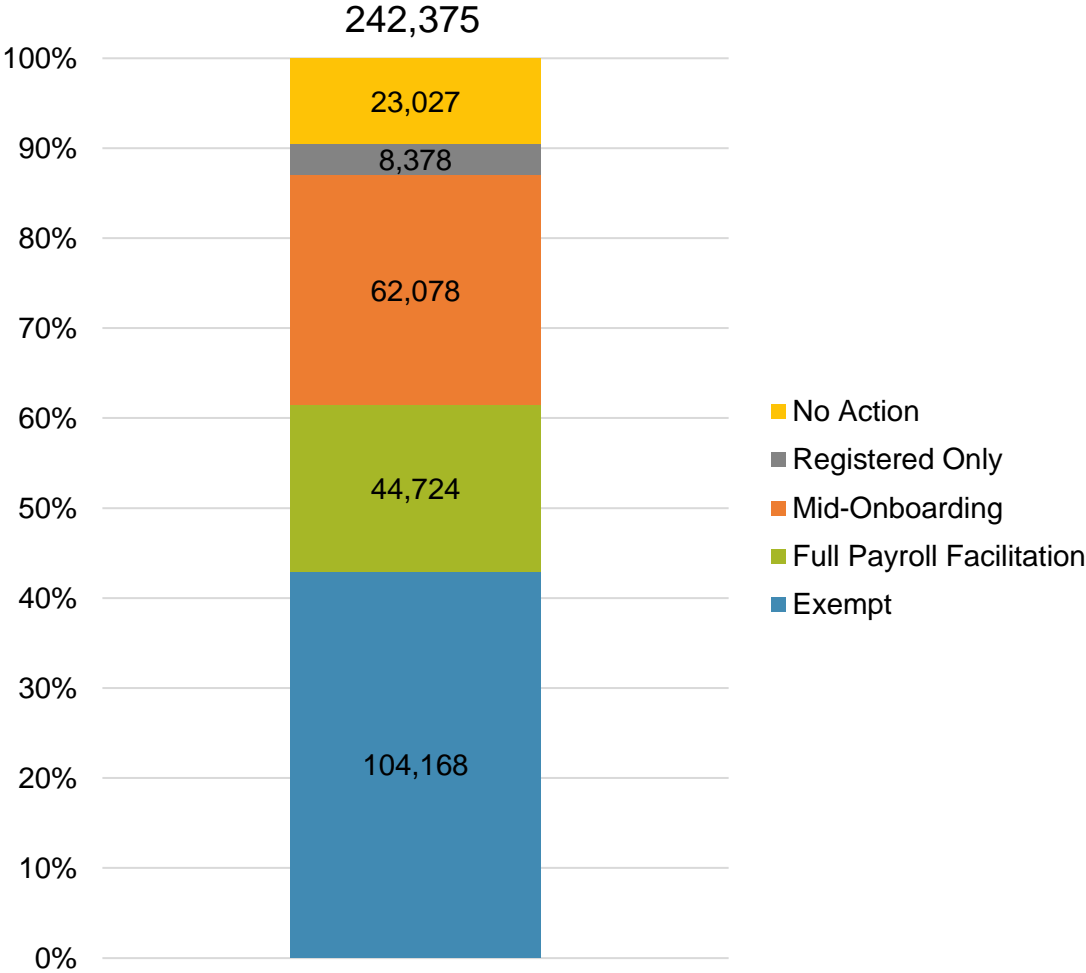
The Program operated a limited scope pilot from November 2018 through June 2019 prior to full statewide launch on July 1, 2019.

Chart 7: Employer Status by Wave Deadline

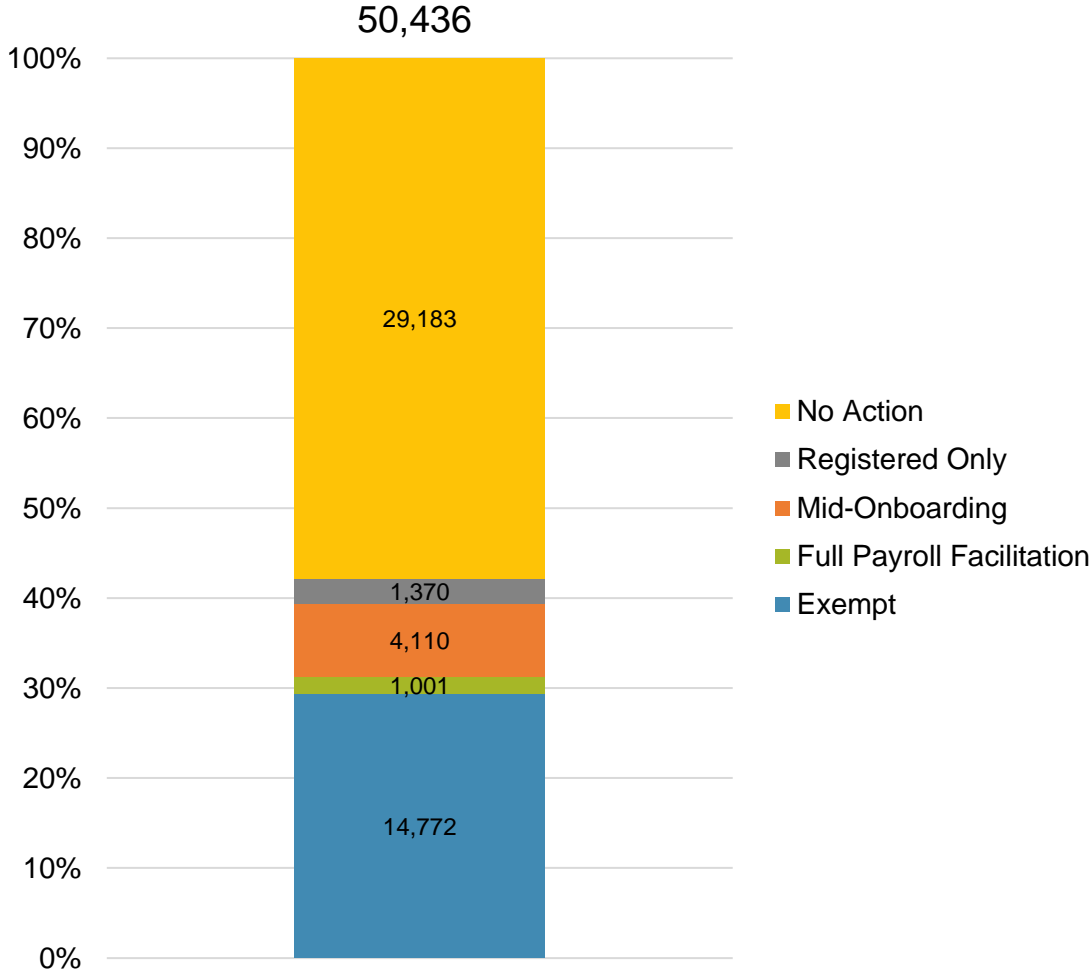
As of 10/31/2023



Post-Deadline Employers



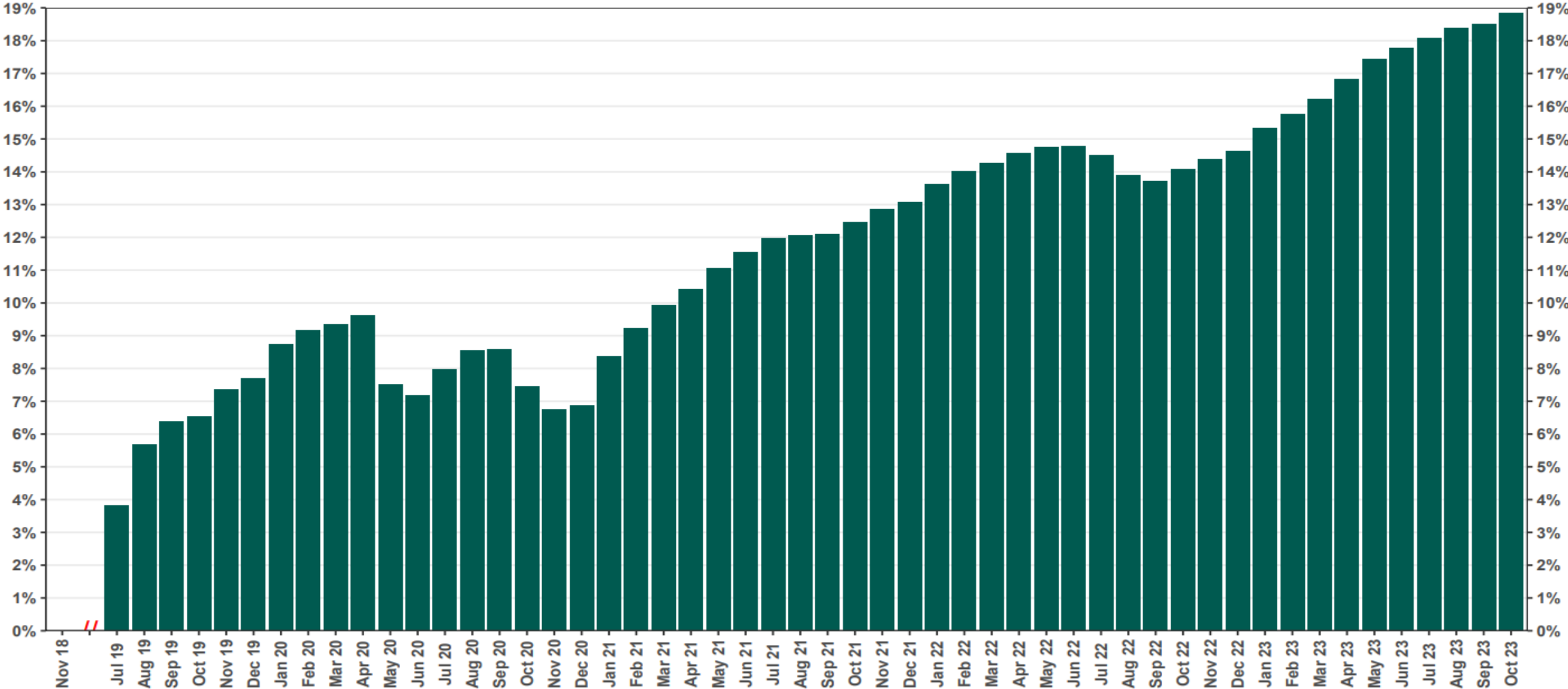
Newly Mandated Employers



* Early Action refers to employers who registered or reported an exemption prior to any notifications distribution.

Chart 8: Accounts w/ Full Withdrawal as % of Payroll Contributing Accounts

As of 10/31/23



The Program operated a limited scope pilot from November 2018 through June 2019 prior to full statewide launch on July 1, 2019.