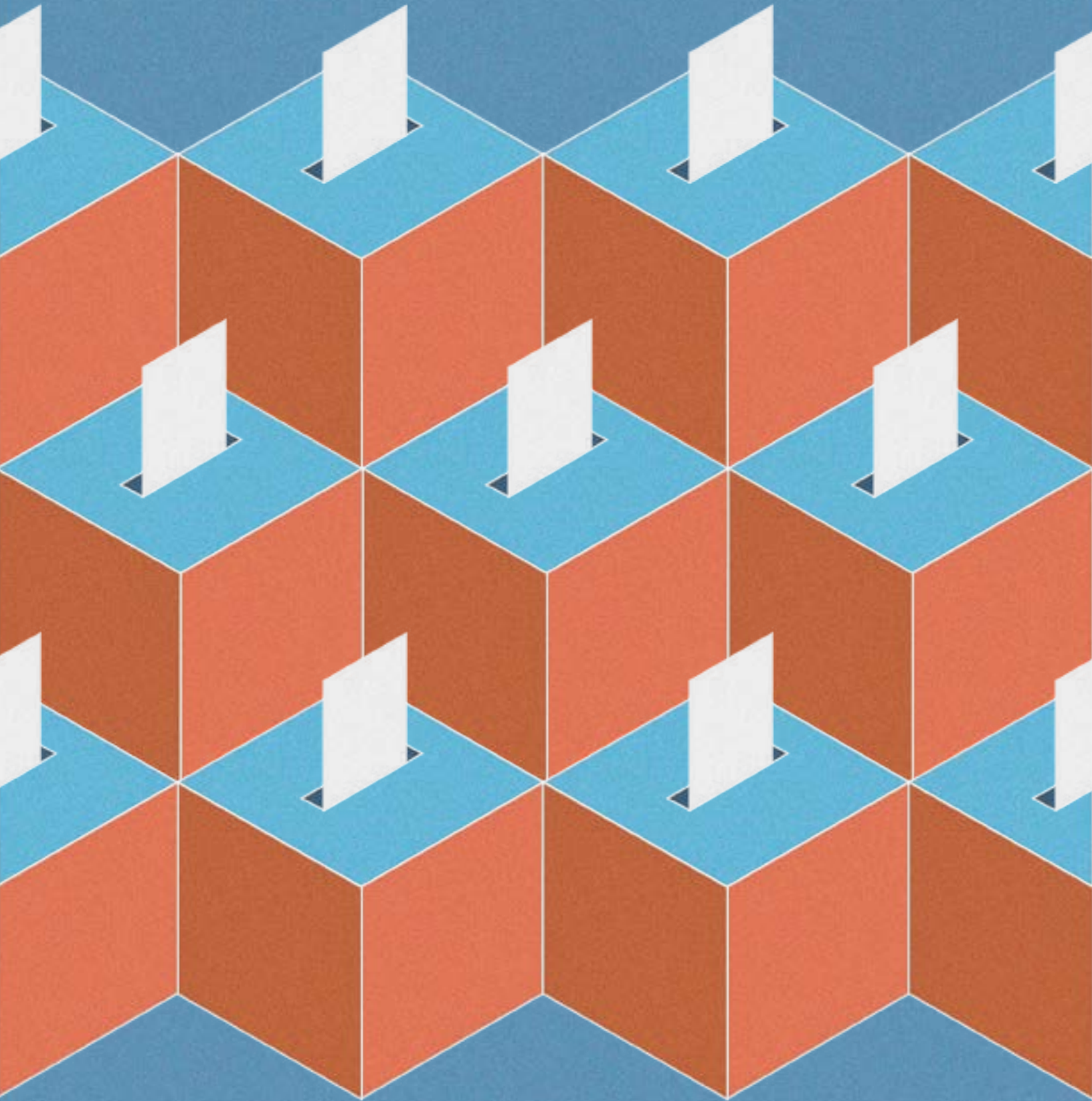


# Results of the 2024 Local and General Elections

BOND AND TAX MEASURES APPEARING ON THE 2024 LOCAL AND GENERAL BALLOTS



# California Debt and Investment Advisory Commission

For over forty years, the California Debt and Investment Advisory Commission (CDIAC) has provided information, education, and technical assistance on debt issuance and public funds investments to local public agencies and other public finance professionals. CDIAC was created in 1981 to serve as the state's clearinghouse for public debt issuance information and to assist state and local agencies with the monitoring, issuance, and management of public debt.

## COMMISSION MEMBERS

FIONA MA, CPA  
California State Treasurer and Chair

GAVIN NEWSOM  
Governor

MALIA M. COHEN  
State Controller

TIMOTHY GRAYSON  
State Senator

LAURA RICHARDSON  
State Senator

DAVID ALVAREZ  
Assemblymember

AVELINO VALENCIA  
Assemblymember

SANDIE ARNOTT  
Treasurer-Tax Collector, County of San Mateo

NIKOLAI SKLAROFF  
Capital Finance Director  
San Francisco Public Utilities Commission

## EXECUTIVE DIRECTOR

ROBERT BERRY

Additional information concerning this report or CDIAC programs may be obtained by contacting CDIAC directly via phone (916) 653-3269, fax (916) 654-7440, e-mail ([cdiac@treasurer.ca.gov](mailto:cdiac@treasurer.ca.gov)) or by visiting CDIAC's website: [www.treasurer.ca.gov/cdiac](http://www.treasurer.ca.gov/cdiac).

All rights reserved. No part of the *Results of the 2024 Local and General Elections: Bond and Tax Measures Appearing on the 2024 Local and General Ballots* may be reproduced without written credit given to CDIAC. Permission to reprint with written credit given to CDIAC is hereby granted.

# CONTENTS

ACKNOWLEDGEMENT . . . . .	1
INTRODUCTION . . . . .	2
2024 LOCAL AND GENERAL ELECTION RESULTS . . . . .	3
Summary . . . . .	3
General Obligation Bond Measures. . . . .	3
Tax Measures . . . . .	4
Results by Region. . . . .	5
COMPARISON OF THE 2022 AND 2024 GENERAL ELECTIONS . . . . .	7
Summary . . . . .	9
FIGURES	
FIGURE 1 Measure Type and Threshold . . . . .	2
FIGURE 2 Summary of Results for Fiscal Measures by Type, Results of the 2024 Local and General Elections. . . . .	3
FIGURE 3 GO Bond Measures by Number and Authorized Volume, Results of the 2024 Local and General Elections. . . . .	4
FIGURE 4 GO Bond Measures by Purpose, Results of the 2024 General Election . . . . .	4
FIGURE 5 Tax Measures, Results of the General Election, November 5, 2024 . . . . .	4
FIGURE 6 Tax Measures by Purpose, Results of the 2024 Local and General Elections . . . . .	5
FIGURE 7 Counties Included in Region . . . . .	5

FIGURE 8 Election Results by Region, Results of the 2024 Local and General Elections. . . . .	6
FIGURE 9 Election Results by Vote Requirement, 2022 and 2024 General Elections . . . . .	7
FIGURE 10 Election Results by Type of Measure, 2022 and 2024 General Elections . . . . .	8
FIGURE 11 Local Election Results by Region, 2022 and 2024 General Elections . . . . .	8
FIGURE 12 Election Results by Purpose, 2022 and 2024 General Elections . . . . .	9

## APPENDIX A

Summary of Statewide Fiscal Measures, 2024 Local and General Elections . . . . .	10
----------------------------------------------------------------------------------	----

## APPENDIX B

Summary of Local Government Bond and Tax Measures, by County, 2024 Local and General Elections Elections . . . . .	12
-----------------------------------------------------------------------------------------------------------------------	----

# ACKNOWLEDGEMENT

Jean Shih of the Policy Research Unit compiled the data and prepared the analysis. Darlene Medrano assisted in gathering the data. Tara Dunn and Angelica Hernandez reviewed and edited the report.

# INTRODUCTION

Constitutional and statutory provisions require voters to authorize general obligation (GO) bonds issued by state and local governments. For bonds issued by the state, the authorization must be made through a statewide election. Local bonds must be approved by voters within the jurisdiction authorizing the bond. The state and local governments must also seek voter approval for levies of certain revenue exactions and taxes. For both state and local measures, the voter approval threshold depends on the type and purpose of the bond or tax (see Figure 1).

After each statewide election, The California Debt and Investment Advisory Commission (CDIAC) publishes a statistical summary and review of bond and tax measures appearing on state and local ballots. This report, the 43rd in the series, summarizes the results of bond and tax measures on the November 5, 2024 General Election, as well as local elections that occurred on May 7, 2024 and July 30, 2024. This report also contains appendices which summarize statewide measures and local elections by county.

**Figure 1**  
MEASURE TYPE AND THRESHOLD

BALLOT MEASURE	REQUIREMENT FOR PASSAGE
Local GO - Education (Prop. 39 Limits)	55 percent
Local GO - Education (without Prop. 39 Limits)	Two-thirds
Local GO - Non-Education	Two-thirds
Local Special Tax	Two-thirds
Local General Tax	Majority
State Bond and Tax	Majority

# 2024 LOCAL AND GENERAL ELECTION RESULTS

## SUMMARY

- **TOTAL MEASURES.** Voters considered two statewide fiscal measures and 555 local fiscal measures; 270 were tax measures and 285 were general obligation bond measures. (Figure 2)
- **APPROVED MEASURES.** Voters approved 424 (76.1%) of the measures.
- **PASSAGE RATES.** General tax measures had a passage rate of 85.1%; GO Bonds had a passage rate of 76.3%; Special tax measures had the lowest approval rate at 63.8%.

## GENERAL OBLIGATION BOND MEASURES

- **GOOD SUPPORT FOR GO BOND MEASURES.** Voters approved 77.4% of general obligation bond measures. (Figures 3 & 4)
- **VOLUME OF APPROVED MEASURES.** Voters approved approximately \$69.4 billion in GO bond measures.
- **K-12 EDUCATIONAL FOCUS.** K-12 school facilities/programs dominated the purposes of proposed GO bond measures (88.5%). (Figure 4)

**Figure 2**  
SUMMARY OF RESULTS FOR FISCAL MEASURES, BY TYPE  
RESULTS OF THE 2024 LOCAL AND GENERAL ELECTIONS

FISCAL MEASURE TYPE	TOTAL NUMBER	PASSED	PASSAGE RATE
LOCAL ELECTION			
Special Tax	7	2	28.6%
GENERAL ELECTION			
General Tax <sup>A</sup>	154	131	85.1
GO Bond <sup>B</sup>	287	219	76.3
Special Tax <sup>C</sup>	109	72	66.1
TOTAL	557	424	76.1%

<sup>A</sup> Includes one general tax measure that required two-thirds voter approval.  
<sup>B</sup> Includes 17 local bond measures that required two-thirds voter approval and two state bond measures that required majority approval, of which 10 measures passed.  
<sup>C</sup> Includes 22 special tax measures, which required majority voter approval, of which 15 measures passed.

### Figure 3

GO BOND MEASURES BY NUMBER AND AUTHORIZED VOLUME (IN MILLIONS)  
RESULTS OF THE 2024 LOCAL AND GENERAL ELECTIONS

RESULT	NUMBER	VOLUME
Fail	68	\$4,430
Pass*	219	69,369
TOTAL	287	\$73,799

\* Total may not add due to rounding.

- GOOD SUPPORT FOR K-12 EDUCATIONAL GO BONDS. Voters approved 76.8% (approximately \$69.4 billion) of K-12 education GO bond measures.
- MODERATE SUPPORT FOR FIRE PROTECTION/POLICE SERVICES/EMERGENCY MEDICAL SERVICES GO BONDS. Voters approved 57.1% (\$816.8 million) for these GO bond measures.

### TAX MEASURES

- GOOD SUPPORT FOR TAX MEASURES. Voters approved 75.9% of local general and special tax measures. (Figure 5)

### Figure 4

GO BOND MEASURES BY PURPOSE, RESULTS OF THE GENERAL ELECTION, NOVEMBER 5, 2024

PURPOSE	NUMBER OF PROPOSED MEASURES	PERCENT OF MEASURES <sup>A</sup>	NUMBER OF PASSED MEASURES	PASSAGE RATE
College, University Facilities	15	5.2%	14	93.3%
Fire, Police Protection/Emergency Medical	7	2.4	4	57.1
Health Care Facilities	1	0.3	0	0.0
K-12 School Facilities <sup>B</sup>	254	88.5	195	76.8
Parks, Open Space	3	1.0	1	33.3
Public Buildings	3	1.0	2	66.7
Public Safety	2	0.7	2	100.0
Street Construction and Improvements	2	0.7	1	50.0
TOTAL	287	100.0%	219	76.3%

<sup>A</sup> Percentages may not add due to rounding.

<sup>B</sup> Includes one state GO bond measure for elementary and secondary educational facilities and community college facilities.

<sup>C</sup> Includes one state GO bond measure for water, wildfire prevention, and protection of communities and lands.

### Figure 5

TAX MEASURES, RESULTS OF THE 2024 LOCAL AND GENERAL ELECTIONS

TYPE OF TAX	TOTAL NUMBER	PERCENT OF MEASURES	PASSED	PASSAGE RATE
LOCAL ELECTION				
Special Tax	7	2.6%	2	28.6%
GENERAL ELECTION				
General Tax*	154	57.0	131	85.1
Special Tax**	109	40.4	72	66.1
TOTAL	270	100.0%	205	75.9%

\* Includes one general tax measure that required two-thirds voter approval, which passed.

\*\* 22 special tax measures which required majority voter approval, 15 of which received voter approval.



**Figure 6**

TAX MEASURES BY PURPOSE, RESULTS OF THE 2024 LOCAL AND GENERAL ELECTIONS

PURPOSE	TOTAL NUMBER	PERCENT OF MEASURES	PASSED	PASSAGE RATE
LOCAL ELECTION				
Education	4	1.5%	2	50.0%
Public Health and Safety	3	1.1	0	0.0
GENERAL ELECTION				
Capital Improvements and Public Works	54	20.0	35	64.8
Education	27	10.0	25	92.6
General Government*	130	48.1	113	86.9
Housing	3	1.1	2	66.7
Miscellaneous**	10	3.7	7	70.0
Public Health and Safety	39	14.4	21	53.8
TOTAL	270	100.0%	205	75.9%

\* General Government includes measures that describe a variety of purposes provided by the public agency.

\*\*Miscellaneous includes measures that describe specific purposes such as housing, beach and coastal maintenance, childcare and early education, park and recreation facilities, public library services, removal of abandoned vehicles, and parks, trees, and landscaping.

- **STRONG SUPPORT FOR LOCAL GENERAL TAX MEASURES.** Voters approved 85.1% of local general tax measures.
- **MAJORITY VS. TWO-THIRDS VOTING REQUIREMENT.** General measures typically require majority threshold to pass. If these measures had a two-thirds voting requirement, only 47.4% (73 of the 154 general tax measures) would have passed. In contrast, special tax measures typically require two-thirds voter approval to pass. If these measures required a majority vote, 81.0% (94 of the 116 special tax measures) would have passed.
- **PURPOSE OF TAXES.** Most of the tax measures were general taxes for various *General Government* purposes (48.1%). The highest purpose categories for the remaining measures include *Capital Improvements and Public Works*, *Public Health and Safety*, and *Education*. (Figure 6)

## RESULTS BY REGION

The election results are divided into five regions: Bay Area, Central Valley, Los Angeles, San Diego/Inland Empire, and Other. (Figure 7)

**Figure 7**

COUNTIES INCLUDED IN REGION

<b>BAY AREA</b>	Alameda, Contra Costa, Marin, Napa, San Francisco, San Mateo, Santa Clara, Solano, and Sonoma Counties.
<b>CENTRAL VALLEY</b>	Butte, Colusa, El Dorado, Fresno, Glenn, Kern, Kings, Madera, Merced, Placer, Sacramento, San Joaquin, Shasta, Sutter, Stanislaus, Tehama, Tulare, Yolo, and Yuba Counties.
<b>LOS ANGELES</b>	Los Angeles, Orange, and Ventura Counties.
<b>SAN DIEGO/INLAND EMPIRE</b>	Imperial, San Diego, Riverside, and San Bernardino Counties.
<b>OTHER</b>	Alpine, Amador, Calaveras, Del Norte, Humboldt, Inyo, Lake, Lassen, Mariposa, Mendocino, Modoc, Mono, Monterey, Nevada, Plumas, San Benito, San Luis Obispo, Santa Barbara, Santa Cruz, Sierra, Siskiyou, Trinity, and Tuolumne Counties. Also includes measures that overlap multiple county boundaries.

## Figure 8

### ELECTION RESULTS BY REGION RESULTS OF THE 2024 LOCAL AND GENERAL ELECTIONS

REGION	TOTAL PROPOSED	PASSED	PASSAGE RATE
LOCAL ELECTION			
Bay Area	4	2	50.0%
Central Valley	1	0	0.0
Other	2	0	0.0
GENERAL ELECTION			
Bay Area	121	108	89.3
Central Valley	152	100	65.8
Los Angeles	87	73	83.9
Other	138	98	71.0
San Diego/ Inland Empire	43	36	83.7
Multiple*	7	5	71.4
TOTAL	555	422	76.0%

\* Multiple includes measures that overlap more than one region.

- **APPROVED MEASURES.** Central Valley region voters were presented with the most measures (152) during the General Election. Voters on measures that overlapped multiple regions were presented with the least measures (seven). (Figure 8)
- **PASSAGE RATES.** For the General Election, Bay Area region had the highest passage for GO bond and tax measures (89.3%), followed by Los Angeles region, with a passage rate of 83.9%. Central Valley region had the lowest passage rate (65.8%).

# COMPARISON OF THE 2022 AND 2024 GENERAL ELECTIONS

- **COMPARATIVE PASSAGE RATES.** The passage rate of bond and tax measures during the 2024 General Election was higher (76.7%) than the 2022 General Election (69.0%). (Figure 9)
- **COMPARATIVE NUMBER OF APPROVED MEASURES.** The 2024 General Election had both more measures on the ballot (550) compared to 2022 (303) and had more measures approved in 2024 (422) compared to 2022 (209).
- **TYPE OF LOCAL MEASURES COMPARISON.** Local general tax measures represented the greatest number of proposed measures on local ballots in 2022 (125); however, in 2024, GO bonds represented the greatest number of proposed measures (285). (Figure 10)
- **SPECIAL TAX MEASURE PASSAGE RATES.** The passage rate for special tax measures was higher in 2024 (66.1%) than 2022 (50.0%).
- **REGIONAL PASSAGE RATES.** In the 2024 General Election, the Bay Area region had the highest passage rate (89.3%), but in 2022, the measures that overlapped multiple regions had the highest passage rate (100%) followed by Los Angeles (82.5%). (Figure 11)

Figure 9 provides a summary of the passage requirements for the bond and tax measures appearing on the 2022 and 2024 General Election ballots.

**Figure 9**

ELECTION RESULTS BY VOTE REQUIREMENT, 2022 AND 2024 GENERAL ELECTIONS

VOTE REQUIREMENT	2022 PROPOSED MEASURES	2022 PASSED MEASURES	2022 PASSAGE RATE	2024 PROPOSED MEASURES	2024 PASSED MEASURES	2024 PASSAGE RATE
Majority	143	109	76.2%	177	147	83.1%
55%	99	71	71.7	268	209	78.0
Two-thirds	61	29	47.5	105	66	62.9
TOTAL	303	209	69.0%	550	422	76.7%

Figure 10 provides a summary of the types of bond and tax measures on the General Election ballots.

## Figure 10

### ELECTION RESULTS BY TYPE OF MEASURE, 2022 AND 2024 GENERAL ELECTIONS

MEASURE TYPE	2022 PROPOSED MEASURES*	2022 PASSED MEASURES	2022 PASSAGE RATE	2024 PROPOSED MEASURES**	2024 PASSED MEASURES	2024 PASSAGE RATE
STATE						
GO Bond	0	0	0.0%	2	2	100.0%
LOCAL						
General Tax	125	99	79.2	154	131	85.1
GO Bond	106	74	69.8	285	217	76.1
Special Tax	70	35	50.0	109	72	66.1
Special Tax Bond	2	1	50.0	0.0	0	0.0
TOTAL	303	209	69.0%	550	422	76.7%

\* In the 2022 General Election, there were 18 special tax measures, which required majority voter approval.

\*\*In the 2024 General Election, there was one general tax measure that required two-thirds voter approval and 22 special tax measures that required majority voter approval.

A summary of votes by regions is provided in Figure 11.

## Figure 11

### LOCAL ELECTION RESULTS BY REGION, 2022 AND 2024 GENERAL ELECTIONS

REGION	2022 PROPOSED MEASURES	2022 PASSED MEASURES	2022 PASSAGE RATE	2024 PROPOSED MEASURES	2024 PASSED MEASURES*	2024 PASSAGE RATE
Bay Area	78	64	82.1%	121	108	89.3%
Central Valley	80	46	57.5	152	100	65.8
Los Angeles	57	47	82.5	87	73	83.9
San Diego/ Inland Empire	29	21	72.4	43	36	83.7
Other	56	28	50.0	138	98	71.0
Multiple**	3	3	100.0	7	5	71.4
TOTAL	303	209	69.0%	548	420	76.6%

\* Total does not include the two state measures on the ballot in 2024.

\*\*Multiple includes measures that overlap more than one region.

- **PASSAGE RATES BY PURPOSE.** In both 2024 and 2022, the passage rate for *General Government* was the highest (86.9% in 2024 and 78.9% in 2022). The passage rate for *Education* came in second in both 2024 and 2022, with 79.3% and 70.6%, respectively. (Figure 12)
- **COMPARATIVE NUMBER OF PROPOSED MEASURES BY PURPOSE CATEGORY.** In 2024, the greatest number of proposed measures was for *Education* (295 or 53.6%); however in 2022, *General Government* had the greatest number of proposed measures (128 or 42.2%). The purpose

Figure 12 summarizes the types of projects appearing on the local elections' ballots.

**Figure 12**

ELECTION RESULTS BY PURPOSE, 2022 AND 2024 GENERAL ELECTIONS

PURPOSE	2022 PROPOSED MEASURES	2022 PASSED MEASURES	2022 PASSAGE RATE	2024 PROPOSED MEASURES	2024 PASSED MEASURES	2024 PASSAGE RATE
Capital Improvements and Public Works	24	11	45.8%	63	39	61.9%
Education	109	77	70.6	295	234	79.3
General Government*	128	101	78.9	130	113	86.9
Housing	3	2	66.7	3	2	66.7
Miscellaneous**	17	10	58.8	10	7	70.0
Public Health and Safety	22	8	36.4	49	27	55.1
TOTAL	303	209	69.0%	550	422	76.7%

\* General Government includes measures that describe a variety of purposes provided by the public agency.

\*\*In 2022, miscellaneous includes cemetery improvements, childcare and early education, flood control, gate operations, homeless prevention and services, public libraries and public library services, removal of abandoned vehicles, town maintenance/landscaping, and zoo maintenance. In 2024, miscellaneous includes abandoned vehicle disposal, beach/coastal maintenance, childcare and early education, decarbonization programs, public library services, rental assistance program, and water service.

with the lowest number of proposed measures was *Housing* in both the 2024 and 2022 General Elections with three proposed measures each.

- CANNABIS MEASURES. Cannabis measures which are mainly included as *General Government* measures significantly decreased 78.6% in the 2024 General Election (6) compared to 2022 (28), as well as the passage rate (66.7% in 2024 and 89.3% in 2022).

## SUMMARY

In both the 2024 and 2022 General Elections, voters positively supported bond and tax measures; however, the 2024 General Election had a higher passage rate (76.7%) compared to the 2022 General Election (69.0%). The 2024 General Election had more measures on the ballot (550) compared to the 2022 General Election (303), representing an 81.5% increase from 2022 to 2024.

In addition, *Education* measures had an increase of 170.6% in the total number of proposed measures presented to voters from 2022 to 2024 as well as an increase in the amount of support from voters with a 79.3% passage rate in 2024 and 70.6% in 2022.

In the 2024 elections, *Education* comprised the majority of ballot measures with 295 measures (53.6%), while, in 2022, *General Government* comprised the majority of the ballot measures (42.2%). Cannabis measures made up only 1.1% of all measures in the 2024 General Election while in 2022, cannabis measures made up 9.2% of all measures. Under the *Education* purpose category, the number of measures for *College, University Facilities* almost doubled with 15 measures (all bond measures) in the 2024 General Election compared to nine (9) measures (eight bond and one tax) in the 2022 General Election.

# APPENDIX A

## SUMMARY OF STATEWIDE FISCAL MEASURES

SUMMARY OF STATEWIDE FISCAL MEASURES, 2024 GENERAL ELECTION, NOVEMBER 5, 2024

DESCRIPTION	PURPOSE	PROPOSITION	% YES	% NO	RESULT
GO Bond - \$10,000,000,000	Authorizes \$8,500,000,000 dedicated to elementary and secondary educational facilities and \$1,500,000,000 for community college facilities	2	58.7	41.3	Pass
GO Bond - \$10,000,000,000	Authorizes \$10,000,000,000 in general obligation bonds for water, wildfire prevention, and protection of communities and lands.	4	59.8	40.2	Pass

# APPENDIX B

## SUMMARY OF LOCAL GOVERNMENT BOND AND TAX MEASURES BY COUNTY



SUMMARY OF LOCAL GOVERNMENT BOND AND TAX MEASURES BY COUNTY, 2024 LOCAL AND GENERAL ELECTIONS

COUNTY	REGION	ELECTION DATE	AGENCY NAME	TYPE OF TAX/DEBT	AMOUNT OF BOND/TAX	PURPOSE	MEASURE	% YES	% NO	RESULT	THRESHOLD
Contra Costa	Bay Area	5/7/2024	San Ramon Valley Unified School District	Special Tax	Parcel Tax: renew existing \$144 annual parcel tax, providing approximately \$6,800,000 annually for 9 years	K-12 School Programs	E	63.0	37.1	Fail	Two-thirds
Contra Costa	Bay Area	5/7/2024	San Ramon Valley Unified School District	Special Tax	Parcel Tax: \$98 per parcel, providing approximately \$4,600,000 annually for 9 years	K-12 School Programs	F	57.9	42.1	Fail	Two-thirds
Marin	Bay Area	5/7/2024	Nicasio School District	Special Tax	Parcel Tax: extend the existing parcel tax of \$748.21 per year per assessor's parcel for a period of 10 years beginning July 1, 2025, and expiring June 30, 2035. Beginning on July 1, 2026, the rate of the special tax shall be increased by 3% each year.	K-12 School Programs	J	74.3	25.7	Pass	Two-thirds
Plumas	Other	5/7/2024	Chester Public Utilities District	Special Tax	Parcel Tax: annual \$450 per parcel for 2023-2024, with anticipated revenues of \$665,000	Fire Protection/ Emergency Medical Services	B	50.1	49.9	Fail	Two-thirds
Plumas	Other	5/7/2024	Chester Public Utilities District	Special Tax	Parcel Tax: annual \$1,500 per parcel for 2023-2024, with anticipated revenues of \$2,200,000	Fire Protection/ Emergency Medical Services	C	28.6	71.4	Fail	Two-thirds
Santa Clara	Bay Area	5/7/2024	Los Gatos-Saratoga Union High School District	Special Tax	Parcel Tax: renew at \$49, plus \$79 per parcel, providing \$2,520,000 annually for nine years	K-12 School Programs	A	67.8	32.2	Pass	Two-thirds
Kern	Central Valley	7/30/2024	California City	Special Tax	Parcel Tax: a maximum of \$120 for improved parcels and \$60 for unimproved parcels for the first year, reducing by one-sixth for each subsequent year, for 6 years	Fire Protection/Police Services/Emergency Medical Services	B	37.8	62.2	Fail	Two-thirds
Alameda	Bay Area	11/5/2024	Albany Unified School District	GO Bond	\$63,800,000	K-12 School Facilities	L	72.2	27.8	Pass	55%
Alameda	Bay Area	11/5/2024	Fremont Unified School District	GO Bond	\$919,000,000	K-12 School Facilities	M	64.3	35.7	Pass	55%
Alameda	Bay Area	11/5/2024	New Haven Unified School District	GO Bond	\$272,000,000	K-12 School Facilities	N	67.5	32.5	Pass	55%
Alameda	Bay Area	11/5/2024	Newark Unified School District	GO Bond	\$205,000,000	K-12 School Facilities	O	67.6	32.4	Pass	55%

SUMMARY OF LOCAL GOVERNMENT BOND AND TAX MEASURES BY COUNTY, 2024 LOCAL AND GENERAL ELECTIONS

COUNTY	REGION	ELECTION DATE	AGENCY NAME	TYPE OF TAX/DEBT	AMOUNT OF BOND/TAX	PURPOSE	MEASURE	% YES	% NO	RESULT	THRESHOLD
Alameda	Bay Area	11/5/2024	Piedmont Unified School District	Special Tax	Parcel Tax: renew parcel tax at \$0.50 per square foot of building improvements, providing \$5,000,000 in annual school funding for 8 years	K-12 School Programs/Teacher Recruitment	P	81.1	18.9	Pass	Two-thirds
Alameda	Bay Area	11/5/2024	San Lorenzo Unified School District	GO Bond	\$195,000,000	K-12 School Facilities	Q	66.5	33.5	Pass	55%
Alameda	Bay Area	11/5/2024	Albany	Special Tax	Parcel Tax: \$0.017 per lot square foot on non-exempt property	Street Improvements	C	70.5	29.5	Pass	Two-thirds
Alameda	Bay Area	11/5/2024	Albany	Special Tax	Business License Tax: 0.36% of gross receipts for renting four or fewer units in the City and 1% of gross receipts for renting five or more units, providing approximately \$475,000 annually	Rental Assistance Program	R	47.6	52.4	Fail	Two-thirds
Alameda	Bay Area	11/5/2024	Berkeley	General Tax	Real Property Transfer Tax: 2.5% for properties valued \$1,600,000 or higher, increasing the rate from 2.5% to 3% for properties valued \$1,900,000 or higher and from 3% to 3.5% for properties valued \$3,000,000 or higher, generating an estimated \$2,000,000 to \$4,000,000 annually	General Government	W	60.9	39.1	Pass	Majority
Alameda	Bay Area	11/5/2024	Berkeley	Special Tax	Parcel Tax: \$0.06 per square foot for dwelling units and \$0.09 per square foot for other properties, generating \$5,600,000 annually	Public Libraries	X	78.6	21.5	Pass	Two-thirds
Alameda	Bay Area	11/5/2024	Berkeley	Special Tax	Parcel Tax: increase from \$0.221 to \$0.2652 per square foot of taxable improvements, generating an additional approximately \$3,800,000 annually for a total of approximately \$22,000,000 annually	Parks, Trees, and Landscaping	Y	75.2	24.8	Pass	Two-thirds
Alameda	Bay Area	11/5/2024	Berkeley	General Tax	Sugary Drink Tax: remove the January 1, 2027 expiration date and extend indefinitely the 1 cent per fluid ounce tax of sugary drinks, raising approximately \$1,150,000 per year	General Government	Z	79.9	20.1	Pass	Majority
Alameda	Bay Area	11/5/2024	Berkeley	Special Tax	Parcel Tax: \$0.13 per square foot of improvements, generating \$10,500,000 annually for 12 years	Street Improvements	EE	45.6	54.4	Fail	Majority

SUMMARY OF LOCAL GOVERNMENT BOND AND TAX MEASURES BY COUNTY, 2024 LOCAL AND GENERAL ELECTIONS

COUNTY	REGION	ELECTION DATE	AGENCY NAME	TYPE OF TAX/DEBT	AMOUNT OF BOND/TAX	PURPOSE	MEASURE	% YES	% NO	RESULT	THRESHOLD
Alameda	Bay Area	11/5/2024	Berkeley	Special Tax	Parcel Tax: \$0.17 per square foot of improvements to dwelling units and \$0.25 per square foot of improvements to other property, generating approximately \$14,000,000 annually for 14 years	Street Improvements	FF	60.9	39.2	Pass	Majority
Alameda	Bay Area	11/5/2024	Berkeley	Special Tax	Fossil Fuel Tax: \$2.9647 per therm of natural gas for buildings of 15,000 square feet or larger, excluding government buildings, single-family residences, and residential buildings with at least 50% affordable units, adjusted annually for inflation plus 6%, generating an estimated \$26,700,000 the first year and more thereafter until December 31, 2050	Decarbonization Programs	GG	31.0	69.0	Fail	Majority
Alameda	Bay Area	11/5/2024	Hayward	General Tax	Sales Tax: continue an existing half cent sales tax for 20 years, providing \$20,000,000 annually	General Government	K1	83.1	16.9	Pass	Majority
Alameda	Bay Area	11/5/2024	Newark	General Tax	Transient Occupancy Tax: increase from 10% to 14%, providing \$2,100,000 more annually	General Government	LL	80.4	19.6	Pass	Majority
Alameda	Bay Area	11/5/2024	Oakland	Special Tax	Parcel Tax: \$99 for single-family parcel, and \$65 per condominium/multifamily unit for 20 years, generating \$2,670,000 in 2025-2026	Fire Protection	MM	71.2	28.8	Pass	Two-thirds
Alameda	Bay Area	11/5/2024	Oakland	Special Tax	Parcel Tax: extend and increase the existing parking tax surcharge to 10% and the parcel tax to \$198 annually for single-family parcels, \$132 for multiple residential unit parcels, and non-residential parcels as specified, for 9 years, raising approximately \$47,400,000 annually	Fire Protection/Police Services	NN	70.8	29.2	Pass	Majority
Alameda	Bay Area	11/5/2024	Pleasanton	General Tax	Sales Tax: establish a half-cent sales tax, providing \$10,000,000 annually for 10 years	General Government	PP	45.8	54.2	Fail	Majority
Alameda	Bay Area	11/5/2024	Union City	General Tax	Business License Tax: amending Union City's business license ordinance to lower taxes for small businesses, with rates up to 0.25% of gross receipts, raising \$3,500,000 annually	Fire Protection/Police Services	QQ	81.6	18.4	Pass	Majority
Alpine	Other	11/5/2024	Alpine County	General Tax	Transient Occupancy Tax: increase from 10% to 14%, providing approximately an additional \$400,000 annually	General Government	G	67.8	32.2	Pass	Majority

SUMMARY OF LOCAL GOVERNMENT BOND AND TAX MEASURES BY COUNTY, 2024 LOCAL AND GENERAL ELECTIONS

COUNTY	REGION	ELECTION DATE	AGENCY NAME	TYPE OF TAX/DEBT	AMOUNT OF BOND/TAX	PURPOSE	MEASURE	% YES	% NO	RESULT	THRESHOLD
Amador	Other	11/5/2024	Sutter Creek	General Tax	Sales Tax: 1% transaction and use tax, providing approximately \$579,000 annually	General Government	P	63.8	31.0	Pass	Majority
Amador	Other	11/5/2024	Amador County	Special Tax	Sales Tax: limited term 0.75% transaction and use tax for 10 years, providing approximately \$3,400,000 annually	Road Improvements	Q	42.8	57.2	Fail	Two-thirds
Butte	Central Valley	11/5/2024	Biggs Unified School District	GO Bond	\$16,500,000	K-12 School Facilities	A	56.7	43.3	Pass	55%
Butte	Central Valley	11/5/2024	Durham Unified School District	GO Bond	\$24,500,000	K-12 School Facilities	B	57.6	42.4	Pass	55%
Butte	Central Valley	11/5/2024	Chico Unified School District	GO Bond	\$239,000,000	K-12 School Facilities	C	63.6	36.4	Pass	55%
Butte	Central Valley	11/5/2024	Thermalito Union Elementary School District	GO Bond	\$6,800,000	K-12 School Facilities	D	56.8	43.2	Pass	55%
Butte	Central Valley	11/5/2024	Oroville City Elementary School District	GO Bond	\$18,000,000	K-12 School Facilities	E	53.8	46.3	Fail	55%
Butte	Central Valley	11/5/2024	Paradise Unified School District	GO Bond	\$43,000,000	K-12 School Facilities	G	46.4	53.6	Fail	55%
Butte	Central Valley	11/5/2024	Butte County	General Tax	Sales Tax: \$0.01 sales tax providing \$44,000,000 annually	General Government	H	67.7	32.3	Pass	Majority
Calaveras	Other	11/5/2024	Calaveras County	Special Tax	Abandoned Vehicle Abatement Program: renew the Calaveras County Abandoned Vehicle Abatement Program through November 5, 2033 (\$1 per vehicle registered in Calaveras County and an additional \$2 for certain commercial vehicles)	Abandoned Vehicle Disposal	C	71.4	28.6	Pass	Two-thirds
Calaveras	Other	11/5/2024	Middle River Community Services District	Special Tax	Parcel Tax: \$200 per improved lot and \$150 per unimproved lot, generating an approximate additional \$13,000 annually	Road Improvements	E	69.2	30.8	Pass	Two-thirds
Colusa	Central Valley	11/5/2024	Maxwell Unified School District	GO Bond	\$9,100,000	K-12 School Facilities	A	60.2	39.8	Pass	55%
Colusa	Central Valley	11/5/2024	Williams Unified School District	GO Bond	\$23,000,000	K-12 School Facilities	B	58.6	41.4	Pass	55%

SUMMARY OF LOCAL GOVERNMENT BOND AND TAX MEASURES BY COUNTY, 2024 LOCAL AND GENERAL ELECTIONS

COUNTY	REGION	ELECTION DATE	AGENCY NAME	TYPE OF TAX/DEBT	AMOUNT OF BOND/TAX	PURPOSE	MEASURE	% YES	% NO	RESULT	THRESHOLD
Colusa	Central Valley	11/5/2024	Colusa Unified School District	GO Bond	\$13,800,000	K-12 School Facilities	C	60.6	39.4	Pass	55%
Colusa	Central Valley	11/5/2024	Williams	Special Tax	Sales Tax: increase from 0.5% to 1%	Road Improvements, Park and Rec, Fire Protection	W	50.8	49.2	Fail	Two-thirds
Contra Costa	Bay Area	11/5/2024	El Cerrito	General Tax	Sales Tax: extend existing \$0.01 sales tax providing approximately \$4,000,000 annually	General Government	G	81.0	19.0	Pass	Majority
Contra Costa	Bay Area	11/5/2024	Lafayette	General Tax	Sales Tax: enact a \$0.005 sales tax for 7 years, generating approximately \$2,400,000 annually	General Government	H	64.8	35.2	Pass	Majority
Contra Costa	Bay Area	11/5/2024	Pinole	General Tax	Sales Tax: establish a \$0.005 sales tax providing \$2,500,000 annually	General Government	I	67.8	32.2	Pass	Majority
Contra Costa	Bay Area	11/5/2024	San Pablo	General Tax	Cannabis Tax: 7% of gross receipts or \$10 per square foot of commercial grow area, estimated to generate \$1,500,000 to \$2,200,000 annually	General Government	M	72.7	27.4	Pass	Majority
Contra Costa	Bay Area	11/5/2024	San Ramon	General Tax	Sales Tax: \$0.01 sales tax, providing approximately \$16,000,000 annually for 10 years	General Government	N	56.2	43.8	Pass	Majority
Contra Costa	Bay Area	11/5/2024	Martinez Unified School District	GO Bond	\$90,000,000	K-12 School Facilities	O	56.1	43.9	Pass	55%
Contra Costa	Bay Area	11/5/2024	Pittsburg Unified School District	GO Bond	\$140,000,000	K-12 School Facilities	P	71.6	28.4	Pass	55%
Contra Costa	Bay Area	11/5/2024	San Ramon Valley Unified School District	Special Tax	Parcel Tax: renew \$144 annual parcel tax, providing approximately \$6.8 million annually for 9 years	K-12 School Programs	Q	74.9	25.1	Pass	Two-thirds
Contra Costa	Bay Area	11/5/2024	Byron Union School District	GO Bond	\$24,000,000	K-12 School Facilities	R	55.4	44.6	Pass	55%
Contra Costa	Bay Area	11/5/2024	Pleasant Hill Recreation and Park District	GO Bond	\$77,000,000	Park and Recreation Facilities	S	64.8	35.2	Fail	Two-thirds
Del Norte	Other	11/5/2024	Del Norte Unified School District	GO Bond	\$59,000,000	K-12 School Facilities	H	48.5	51.5	Fail	55%

SUMMARY OF LOCAL GOVERNMENT BOND AND TAX MEASURES BY COUNTY, 2024 LOCAL AND GENERAL ELECTIONS

COUNTY	REGION	ELECTION DATE	AGENCY NAME	TYPE OF TAX/DEBT	AMOUNT OF BOND/TAX	PURPOSE	MEASURE	% YES	% NO	RESULT	THRESHOLD
El Dorado	Central Valley	11/5/2024	Black Oak Mine Unified School District	GO Bond	\$12,700,000	K-12 School Facilities	A	58.2	41.8	Pass	55%
El Dorado	Central Valley	11/5/2024	River Pines Zone of Benefit	Special Tax	Parcel Tax: \$500 on each parcel of land within the River Pines Zone of Benefit commencing fiscal year 2025/2026, generating an annual revenue of approximately \$47,000	Road Improvements	B	63.0	37.0	Fail	Two-thirds
El Dorado	Central Valley	11/5/2024	Walnut Drive Road Zone of Benefit	Special Tax	Parcel Tax: \$685 on each parcel of land within the Walnut Drive Zone of Benefit commencing fiscal year 2025/2026, generating an annual revenue of approximately \$51,375	Road Improvements	C	66.2	33.8	Fail	Two-thirds
El Dorado	Central Valley	11/5/2024	Ryan Ranch Zone of Benefit	Special Tax	Parcel Tax: \$1,000 on each parcel of land within the Ryan Ranch Zone of Benefit commencing fiscal year 2025/2026, generating an annual revenue of approximately \$81,000	Road Improvements	E	69.3	30.7	Pass	Two-thirds
El Dorado	Central Valley	11/5/2024	Pilot View Zone of Benefit	Special Tax	Parcel Tax: \$400 on each parcel of land within the Pilot View Zone of Benefit commencing fiscal year 2025/2026, generating an annual revenue of approximately \$28,800	Road Improvements	G	45.9	54.1	Fail	Two-thirds
El Dorado	Central Valley	11/5/2024	King of the Mountain Zone of Benefit	Special Tax	Parcel Tax: \$550 on each parcel of land within the King of the Mountain Zone of Benefit commencing fiscal year 2025/2026, generating an annual revenue of approximately \$11,550	Road Improvements	H	86.7	13.3	Pass	Two-thirds
El Dorado	Central Valley	11/5/2024	Blanchard Estates Zone of Benefit	Special Tax	Parcel Tax: \$1,000 on each parcel of land within the Blanchard Estates Zone of Benefit commencing fiscal year 2025/2026, generating an annual revenue of approximately \$12,000	Road and Drainage Improvements	J	40.0	60.0	Fail	Two-thirds
El Dorado	Central Valley	11/5/2024	Emerald Meadows Zone of Benefit	Special Tax	Parcel Tax: \$375 on each parcel of land within the Emerald Meadows Zone of Benefit commencing fiscal year 2025/2026, generating an annual revenue of approximately \$41,625	Drainage Maintenance	K	85.5	14.5	Pass	Two-thirds
El Dorado	Central Valley	11/5/2024	Cavalry Meadows Zone of Benefit	Special Tax	Parcel Tax: \$350 on each parcel of land within the Cavalry Meadows Zone of Benefit commencing fiscal year 2025/2026, generating an annual revenue of approximately \$3,850	Drainage Maintenance	L	0.0	100.0	Fail	Two-thirds

SUMMARY OF LOCAL GOVERNMENT BOND AND TAX MEASURES BY COUNTY, 2024 LOCAL AND GENERAL ELECTIONS

COUNTY	REGION	ELECTION DATE	AGENCY NAME	TYPE OF TAX/DEBT	AMOUNT OF BOND/TAX	PURPOSE	MEASURE	% YES	% NO	RESULT	THRESHOLD
El Dorado	Central Valley	11/5/2024	Sundown Estates Zone of Benefit	Special Tax	Parcel Tax: \$350 on each parcel of land within the Sundown Estates Zone of Benefit commencing fiscal year 2025/2026, generating an annual revenue of approximately \$3,500	Drainage Maintenance	M	18.8	81.3	Fail	Two-thirds
El Dorado	Central Valley	11/5/2024	South Lake Tahoe	Special Tax	Vacant Property Tax: \$3,000 per unit for the first year of vacancy and \$6,000 per unit for subsequent consecutive years, for vacant properties more than 182 days per year, generating between \$10,000,000 to \$20,000,000 annually	Housing, Road-works, Transit	N	29.3	70.7	Fail	Two-thirds
El Dorado	Central Valley	11/5/2024	Pollock Pines Elementary School District	GO Bond	\$11,500,000	K-12 School Facilities	P	63.0	37.1	Pass	55%
El Dorado	Central Valley	11/5/2024	El Dorado Hills Community Services District – Promontory Park Landscaping and Lighting Assessment District #22	Special Tax	Parcel Tax: repeal Landscape and Lighting District No. 22 and re-fund levied special assessments	Park and Recreation Facilities	R	71.0	29.0	Pass	Majority
El Dorado	Central Valley	11/5/2024	El Dorado Hills Community Services District - Carson Creek Park Landscaping and Lighting Assessment District #39	Special Tax	Parcel Tax: repeal Landscape and Lighting District No. 39 and re-fund levied special assessments	Park and Recreation Facilities	S	91.0	9.0	Pass	Majority
El Dorado	Central Valley	11/5/2024	Hickok Road Community Services District	Special Tax	Parcel Tax: increase from \$200 to \$400 per year, resulting in a maximum annual income of \$24,800	Road Improvements	T	72.4	27.6	Pass	Two-thirds
El Dorado	Central Valley	11/5/2024	Lake Tahoe Unified School District	GO Bond	\$127,000,000	K-12 School Facilities	U	61.2	38.8	Pass	55%

SUMMARY OF LOCAL GOVERNMENT BOND AND TAX MEASURES BY COUNTY, 2024 LOCAL AND GENERAL ELECTIONS

COUNTY	REGION	ELECTION DATE	AGENCY NAME	TYPE OF TAX/DEBT	AMOUNT OF BOND/TAX	PURPOSE	MEASURE	% YES	% NO	RESULT	THRESHOLD
Fresno / Kings	Central Valley	11/5/2024	Laton Joint Unified School District	GO Bond	\$9,700,000	K-12 School Facilities	L	58.0	42.0	Pass	55%
Fresno	Central Valley	11/5/2024	Sierra Unified School District	GO Bond	\$24,150,000	K-12 School Facilities	U	66.9	33.2	Pass	55%
Fresno	Central Valley	11/5/2024	Sanger Unified School District	GO Bond	\$175,000,000	K-12 School Facilities	M	57.6	42.4	Pass	55%
Fresno	Central Valley	11/5/2024	Fresno Unified School District	GO Bond	\$500,000,000	K-12 School Facilities	H	64.5	35.5	Pass	55%
Fresno	Central Valley	11/5/2024	Parlier Unified School District	GO Bond	\$14,100,000	K-12 School Facilities	P	69.0	31.0	Pass	55%
Fresno	Central Valley	11/5/2024	Coalinga	General Tax	Sales Tax: extend 1% transaction and use tax until 2039, generating \$850,000 annually	General Government	J	48.2	51.8	Fail	Majority
Fresno / Kings / Tulare	Central Valley	11/5/2024	Kingsburg Joint Union High School District	GO Bond	\$20,000,000	K-12 School Facilities	K	55.0	45.1	Fail	55%
Fresno / Tulare	Central Valley	11/5/2024	Dinuba Unified School District	GO Bond	\$42,000,000	K-12 School Facilities	D	62.7	37.3	Pass	55%
Fresno / Madera	Central Valley	11/5/2024	Firebaugh-Las Deltas Unified School District	GO Bond	\$25,000,000	K-12 School Facilities	F	64.6	35.4	Pass	55%
Fresno	Central Valley	11/5/2024	Clovis Unified School District	GO Bond	\$400,000,000	K-12 School Facilities	A	57.6	42.4	Pass	55%
Fresno	Central Valley	11/5/2024	Central Unified School District	GO Bond	\$109,000,000	K-12 School Facilities	X	35.8	64.2	Fail	55%
Fresno	Central Valley	11/5/2024	Sanger	Special Tax	Sales Tax: extend existing 3/4 cent transaction and use tax	Fire Protection/Police Services/Emergency Medical Services	R	75.0	25.0	Pass	Two-thirds
Fresno / San Benito / Monterey	Central Valley / Other	11/5/2024	West Hill Community College District-School Facilities Improvement District No.2	GO Bond	\$19,000,000	College Facilities	C	61.6	38.4	Pass	55%



SUMMARY OF LOCAL GOVERNMENT BOND AND TAX MEASURES BY COUNTY, 2024 LOCAL AND GENERAL ELECTIONS

COUNTY	REGION	ELECTION DATE	AGENCY NAME	TYPE OF TAX/DEBT	AMOUNT OF BOND/TAX	PURPOSE	MEASURE	% YES	% NO	RESULT	THRESHOLD
Fresno	Central Valley	11/5/2024	Clovis	General Tax	Sales Tax: 1% transaction and use tax, generating approximately \$28,000,000 each year	General Government	Y	66.9	33.1	Pass	Majority
Fresno / Madera / Kings / Tulare	Central Valley	11/5/2024	State Center Community College District	GO Bond	\$698,000,000	College Facilities	Q	55.9	44.2	Pass	55%
Glenn	Central Valley	11/5/2024	Willows	General Tax	Sales Tax: 1.5% transaction and use tax	General Government	I	60.4	39.6	Pass	Majority
Glenn	Central Valley	11/5/2024	Orland	General Tax	Sales Tax: raise from 0.5 cent to 1 cent, providing \$1,500,000 annually, starting April 1, 2025	General Government	J	66.9	33.1	Pass	Majority
Humboldt	Other	11/5/2024	Kneeland Fire Protection District	Special Tax	Parcel Tax: \$100 vacant, \$180 improved/ single-family residential, \$250 multifamily residential, and \$300 commercial/ industrial, allowing a contiguous parcel exemption, and up to 3% annual inflation adjustment, and generating approximately \$58,000 annually	Fire Protection/ Emergency Medical Services	D	73.7	26.3	Pass	Two-thirds
Humboldt	Other	11/5/2024	Peninsula Community Services District	Special Tax	Parcel Tax: \$155 per single-family residential unit, \$309-\$465 per multi-family residential parcel units, \$30 per vacant property, plus other rates as specified, for six years until June 30, 2031	Fire Protection/ Emergency Medical Services	E	83.2	16.9	Pass	Two-thirds
Humboldt	Other	11/5/2024	Arcata School District	Special Tax	Parcel Tax: renew at \$69 per parcel for 8 years, raising approximately \$285,000 annually	K-12 School Programs	G	82.5	17.5	Pass	Two-thirds
Humboldt	Other	11/5/2024	Arcata	General Tax	Sales Tax: increase by 0.75%	General Government	H	65.2	34.8	Pass	Majority
Humboldt / Del Norte / Trinity	Other	11/5/2024	Redwoods Community College District	GO Bond	\$120,000,000	College Facilities	I	55.8	44.2	Pass	55%
Humboldt	Other	11/5/2024	Ferndale Unified School District	GO Bond	\$9,800,000	K-12 School Facilities	J	54.4	45.6	Fail	55%
Humboldt	Other	11/5/2024	Cutten School District	GO Bond	\$5,000,000	K-12 School Facilities	K	56.7	43.3	Pass	55%

SUMMARY OF LOCAL GOVERNMENT BOND AND TAX MEASURES BY COUNTY, 2024 LOCAL AND GENERAL ELECTIONS

COUNTY	REGION	ELECTION DATE	AGENCY NAME	TYPE OF TAX/DEBT	AMOUNT OF BOND/TAX	PURPOSE	MEASURE	% YES	% NO	RESULT	THRESHOLD
Humboldt	Other	11/5/2024	Trinidad	General Tax	Sales Tax: continue 0.75% transactionans use tax for 4 years	General Government	L	67.4	32.6	Pass	Majority
Humboldt	Other	11/5/2024	McKinleyville Union School District	GO Bond	\$18,500,000	K-12 School Facilities	N	60.9	39.1	Pass	55%
Humboldt	Other	11/5/2024	Humboldt County	General Tax	Sales Tax: 1% transaction and use tax, raising \$24,000,000 annually	General Government	O	63.4	36.6	Pass	Majority
Humboldt	Other	11/5/2024	Fortuna	General Tax	Sales Tax: increase 0.75% transaction and use tax to 1.5% through March 31, 2033	General Government	P	41.7	58.3	Fail	Majority
Imperial	San Diego/ Inland Empire	11/5/2024	Heber Elementary School District	GO Bond	\$4,000,000	K-12 School Facilities	H	68.1	31.9	Pass	55%
Imperial	San Diego/ Inland Empire	11/5/2024	Brawley	General Tax	Sales Tax: 1% transaction and use tax, generating approximately \$3,800,000 annually	General Government	J	65.5	34.5	Pass	Majority
Imperial	San Diego/ Inland Empire	11/5/2024	Imperial Unified School District	GO Bond	\$70,000,000	K-12 School Facilities	K	54.4	45.7	Fail	55%
Imperial	San Diego/ Inland Empire	11/5/2024	Brawley Elementary School District	GO Bond	\$20,000,000	K-12 School Facilities	L	55.9	44.1	Pass	55%
Inyo / Mono	Other	11/5/2024	Bishop Unified School District	GO Bond	\$46,300,000	K-12 School Facilities	R	64.1	35.9	Pass	55%
Inyo	Other	11/5/2024	Bishop Elementary School District	GO Bond	\$14,200,000	K-12 School Facilities	S	65.4	34.6	Pass	55%
Inyo	Other	11/5/2024	Owens Valley Unified School District	GO Bond	\$7,500,000	K-12 School Facilities	T	65.2	34.8	Pass	55%
Inyo	Other	11/5/2024	Lone Pine Unified School District	GO Bond	\$7,500,000	K-12 School Facilities	U	61.7	38.3	Pass	55%
Kern	Central Valley	11/5/2024	Wasco Union High School District	GO Bond	\$35,400,000	K-12 School Facilities	D	64.9	35.1	Pass	55%

SUMMARY OF LOCAL GOVERNMENT BOND AND TAX MEASURES BY COUNTY, 2024 LOCAL AND GENERAL ELECTIONS

COUNTY	REGION	ELECTION DATE	AGENCY NAME	TYPE OF TAX/DEBT	AMOUNT OF BOND/TAX	PURPOSE	MEASURE	% YES	% NO	RESULT	THRESHOLD
Kern	Central Valley	11/5/2024	Buttonwillow Union School District	GO Bond	\$4,000,000	K-12 School Facilities	I	68.7	31.3	Pass	55%
Kern	Central Valley	11/5/2024	California City	General Tax	Sales Tax: \$0.01 transaction and use tax, generating \$700,000 annually	General Government	N	62.9	37.1	Pass	Majority
Kern	Central Valley	11/5/2024	Delano Union Elementary School District	GO Bond	\$41,800,000	K-12 School Facilities	J	76.6	23.4	Pass	55%
Kern	Central Valley	11/5/2024	Fruitvale School District	GO Bond	\$36,000,000	K-12 School Facilities	K	60.9	39.1	Pass	55%
Kern	Central Valley	11/5/2024	Greenfield Union School District	GO Bond	\$25,000,000	K-12 School Facilities	L	74.9	25.1	Pass	55%
Kern	Central Valley	11/5/2024	McFarland Recreation and Park District	GO Bond	\$15,000,000	Park and Recreation Facilities	S	60.3	39.7	Fail	Two-thirds
Kern	Central Valley	11/5/2024	McFarland	General Tax	Transient Occupancy Tax: increase from 6% to 12%, providing an estimated \$500,000 annually	General Government	O	56.3	43.7	Pass	Majority
Kern	Central Valley	11/5/2024	McFarland	General Tax	Utility Users Tax: 5% on telecommunication services, video services, electricity and gas consumption	General Government	P	36.1	63.9	Fail	Majority
Kern	Central Valley	11/5/2024	Ridgecrest	General Tax	Sales Tax: reauthorize \$0.01 sales tax, providing \$6,500,000 annually	General Government	V	68.5	31.5	Pass	Majority
Kern	Central Valley	11/5/2024	Rosedale Union School District	GO Bond	\$52,000,000	K-12 School Facilities	M	50.0	50.0	Fail	55%
Kern / San Bernardino	Central Valley / San Diego/ Inland Empire	11/5/2024	Sierra Sands Unified School District	GO Bond	\$42,000,000	K-12 School Facilities	AA	61.4	38.6	Pass	55%
Kern	Central Valley	11/5/2024	Southern Kern Unified School District	GO Bond	\$59,000,000	K-12 School Facilities	H	58.4	41.6	Pass	55%
Kern	Central Valley	11/5/2024	Maricopa	General Tax	Sales Tax: 1% transaction and use tax, for 10 years	General Government	W	52.7	47.3	Pass	Majority

SUMMARY OF LOCAL GOVERNMENT BOND AND TAX MEASURES BY COUNTY, 2024 LOCAL AND GENERAL ELECTIONS

COUNTY	REGION	ELECTION DATE	AGENCY NAME	TYPE OF TAX/DEBT	AMOUNT OF BOND/TAX	PURPOSE	MEASURE	% YES	% NO	RESULT	THRESHOLD
Kings	Central Valley	11/5/2024	Avenal	General Tax	Vacancy Tax/Transient Occupancy Tax/ Business License Tax: vacancy tax on un- used or unoccupied commercial spaces and uninhabited residences in the City of Avenal, up to \$1,000 per linear foot of frontage, setting transient occupancy tax at 15%, and set business license tax rates from .05% to .475% of gross receipts, generating undetermined revenue, potentially up to \$84,000 annually	General Government	B	43.9	56.1	Fail	Majority
Kings	Central Valley	11/5/2024	Hanford	General Tax	Sales Tax: 1% transaction and use tax, providing approxi- mately \$19,200,000 annually	General Government	H	63.2	36.8	Pass	Majority
Kings	Central Valley	11/5/2024	Lemoore	General Tax	Sales Tax: 1% transaction and use tax, providing approxi- mately \$3,850,000 annually	General Government	S	67.0	33.0	Pass	Majority
Kings	Central Valley	11/5/2024	Armona Union Elementary School District	GO Bond	\$9,000,000	K-12 School Facilities	A	64.4	35.6	Pass	55%
Kings	Central Valley	11/5/2024	Hanford Elementary School District	GO Bond	\$23,000,000	K-12 School Facilities	U	60.5	39.5	Pass	55%
Lake	Other	11/5/2024	Kelseyville Unified School District	GO Bond	\$36,000,000	K-12 School Facilities	R	52.5	47.5	Fail	55%
Lake	Other	11/5/2024	Konocti Unified School District	GO Bond	\$50,000,000	K-12 School Facilities	S	60.0	40.0	Pass	55%
Lassen	Other	11/5/2024	Lassen County	Special Tax	Sales Tax: 1% transaction and use tax	Public Safety	V	46.1	53.9	Fail	Two- thirds
Lassen	Other	11/5/2024	Shaffer Elementary School District	GO Bond	\$2,000,000	K-12 School Facilities	W	59.0	41.0	Pass	55%
Los Angeles	Los Angeles	11/5/2024	Los Angeles County	Special Tax	Sales Tax: repeal the Measure H tax and replacing it with a 1/2 cent sales tax, raising approximately \$1,076,076,350	Housing	A	57.8	42.2	Pass	Majority
Los Angeles	Los Angeles	11/5/2024	Los Angeles County	Special Tax	Parcel Tax: \$0.06 per square foot of certain parcel improvements, providing \$152 million annually, lim- ited to 2% annual adjustment	Fire Protection/ Emergency Medical Services	E	55.1	45.0	Pass	Majority

SUMMARY OF LOCAL GOVERNMENT BOND AND TAX MEASURES BY COUNTY, 2024 LOCAL AND GENERAL ELECTIONS

COUNTY	REGION	ELECTION DATE	AGENCY NAME	TYPE OF TAX/DEBT	AMOUNT OF BOND/TAX	PURPOSE	MEASURE	% YES	% NO	RESULT	THRESHOLD
Los Angeles / Kern	Los Angeles / Central Valley	11/5/2024	Antelope Valley Joint Union High School District	GO Bond	\$398,000,000	K-12 School Facilities	AVH	63.8	36.2	Pass	55%
Los Angeles	Los Angeles	11/5/2024	Arcadia Unified School District	GO Bond	\$358,000,000	K-12 School Facilities	AS	61.3	38.7	Pass	55%
Los Angeles	Los Angeles	11/5/2024	Artesia	General Tax	Sales Tax: $\frac{3}{4}\%$ sales tax providing approximately \$2,500,000 annually	General Government	AAA	68.4	31.6	Pass	Majority
Los Angeles	Los Angeles	11/5/2024	Azusa	General Tax	Sales Tax: $\frac{1}{4}\%$ sales tax, taking effect when legally permissible, generating approximately \$2,500,000 annually	General Government	ZZ	67.5	32.5	Pass	Majority
Los Angeles	Los Angeles	11/5/2024	Beach Cities Health District	GO Bond	\$30,000,000	Public Health	BC	47.5	52.5	Fail	Two-thirds
Los Angeles	Los Angeles	11/5/2024	Burbank Unified School District	GO Bond	\$458,205,000	K-12 School Facilities	ABC	63.7	36.3	Pass	55%
Los Angeles	Los Angeles	11/5/2024	Compton Community College District	GO Bond	\$200,000,000	College Facilities	CC	68.5	31.5	Pass	55%
Los Angeles	Los Angeles	11/5/2024	Culver City Unified School District	Special Tax	Parcel Tax: continue \$189 parcel tax, exempting senior citizens, with independent oversight, raising approximately \$2,400,000 annually for eight years	K-12 School Programs	O	83.4	16.6	Pass	Two-thirds
Los Angeles	Los Angeles	11/5/2024	Downey	General Tax	Sales Tax: $\frac{1}{4}\%$ sales tax providing approximately \$6,000,000 annually	General Government	D	67.3	32.7	Pass	Majority
Los Angeles	Los Angeles	11/5/2024	Duarte	General Tax	Cannabis Tax: adopt an ordinance to permit no more than two storefront retail sales cannabis dispensaries and that taxes cannabis businesses up to 10% of gross receipts to raise up to approximately \$2,526,250 annually	General Government	QQ	52.1	47.9	Pass	Majority
Los Angeles	Los Angeles	11/5/2024	East Whittier City School District	GO Bond	\$97,000,000	K-12 School Facilities	C	64.5	35.5	Pass	55%
Los Angeles	Los Angeles	11/5/2024	El Monte	General Tax	Sales Tax: $\frac{1}{2}\%$ transactions and use tax be increased to $\frac{3}{4}\%$ and extended indefinitely, to raise an additional \$3,500,000 annually	General Government	EM	55.2	44.8	Pass	Majority

SUMMARY OF LOCAL GOVERNMENT BOND AND TAX MEASURES BY COUNTY, 2024 LOCAL AND GENERAL ELECTIONS

COUNTY	REGION	ELECTION DATE	AGENCY NAME	TYPE OF TAX/DEBT	AMOUNT OF BOND/TAX	PURPOSE	MEASURE	% YES	% NO	RESULT	THRESHOLD
Los Angeles	Los Angeles	11/5/2024	El Monte City School District	GO Bond	\$105,000,000	K-12 School Facilities	ME	63.7	36.3	Pass	55%
Los Angeles	Los Angeles	11/5/2024	Glendale Community College District	GO Bond	\$600,000,000	College Facilities	GCC	69.2	30.8	Pass	55%
Los Angeles	Los Angeles	11/5/2024	Glendora	General Tax	Sales Tax: enacting a one-quarter percent (0.25%) transactions and use tax providing approximately \$3,000,000 annually	General Government	Z	57.7	42.3	Pass	Majority
Los Angeles	Los Angeles	11/5/2024	Hermosa Beach	General Tax	Sales Tax: 3/4% transaction and use tax providing approximately \$3,000,000 annually, with a sunset clause 20 years from the effective date, or until ended by voters	General Government	HB	42.6	57.4	Fail	Majority
Los Angeles	Los Angeles	11/5/2024	Hermosa Beach City School	GO Bond	\$28,700,000	K-12 School Facilities	HV	62.1	37.9	Pass	55%
Los Angeles	Los Angeles	11/5/2024	Irwindale	General Tax	Sales Tax: ¼% supplemental transactions and use tax, taking effect when legally permissible, generating approximately \$1,000,000 annually	General Government	IR	67.9	32.1	Pass	Majority
Los Angeles	Los Angeles	11/5/2024	Lancaster	General Tax	Sales Tax: ordinance amending sales and use tax to provide automatic increase to the sales and use tax rate to the maximum permitted	General Government	YM	52.2	47.8	Pass	Majority
Los Angeles	Los Angeles	11/5/2024	Lancaster School District	GO Bond	\$122,100,000	K-12 School Facilities	LS	66.7	33.4	Pass	55%
Los Angeles	Los Angeles	11/5/2024	Local Classrooms Funding Authority	Special Tax	Parcel Tax: continue the levy of the parcel tax approved in November 2012 at existing rates, including inflation adjustments at the reported annual or other periodic percentage changes, rounded to the nearest hundredth of a cent	K-12 School Programs	CL	78.3	21.7	Pass	Two-thirds
Los Angeles	Los Angeles	11/5/2024	Local Public Schools Funding Authority	GO Bond	\$89,000,000	K-12 School Facilities	LP	76.8	23.2	Pass	55%
Los Angeles	Los Angeles	11/5/2024	Long Beach	General Tax	Utility Users Tax: applying existing 5% gas utility user tax to corporations/agencies, generating approximately \$15,000,000 annually	General Government	LB	81.7	18.3	Pass	Majority

SUMMARY OF LOCAL GOVERNMENT BOND AND TAX MEASURES BY COUNTY, 2024 LOCAL AND GENERAL ELECTIONS

COUNTY	REGION	ELECTION DATE	AGENCY NAME	TYPE OF TAX/DEBT	AMOUNT OF BOND/TAX	PURPOSE	MEASURE	% YES	% NO	RESULT	THRESHOLD
Los Angeles	Los Angeles	11/5/2024	Long Beach Community College	GO Bond	\$990,000,000	College Facilities	AC	69.3	30.7	Pass	55%
Los Angeles	Los Angeles	11/5/2024	Los Angeles Unified School District	GO Bond	\$9,000,000,000	K-12 School Facilities	US	68.0	32.0	Pass	55%
Los Angeles	Los Angeles	11/5/2024	Los Nietos School District	GO Bond	\$28,500,000	K-12 School Facilities	RU	72.7	27.3	Pass	55%
Los Angeles	Los Angeles	11/5/2024	Los Nietos School District	GO Bond	\$26,500,000	K-12 School Facilities	ST	73.1	26.9	Pass	55%
Los Angeles / Orange	Los Angeles	11/5/2024	Lowell Joint School District	GO Bond	\$54,000,000	K-12 School Facilities	P	56.5	43.5	Pass	55%
Los Angeles	Los Angeles	11/5/2024	Lynwood Unified School District	GO Bond	\$80,000,000	K-12 School Facilities	U	62.4	37.6	Pass	55%
Los Angeles	Los Angeles	11/5/2024	Manhattan Beach	General Tax	Sales Tax: establish a 0.5¢ sales tax, providing \$5,000,000 annually	General Government	MMB	57.4	42.6	Pass	Majority
Los Angeles	Los Angeles	11/5/2024	Manhattan Beach Unified School District	GO Bond	\$200,000,000	K-12 School Facilities	RLS	66.7	33.3	Pass	55%
Los Angeles	Los Angeles	11/5/2024	Monterey Park	General Tax	Business License Tax: revise the tax rate to 0.00075 per \$1,000 of gross receipts (\$75 yearly minimum tax), generating approximately \$1,200,000 annually	General Government	BE	70.5	29.5	Pass	Majority
Los Angeles	Los Angeles	11/5/2024	Monterey Park	General Tax	Transient Occupancy Tax: increase from 12% to 13%, providing approximately \$500,000 annually	General Government	LG	76.2	23.8	Pass	Majority
Los Angeles	Los Angeles	11/5/2024	Mountains Recreation and Conservation Authority, Division 1	Special Tax	Parcel Tax: establish a \$65 special tax only for fifteen years, providing \$1,857,000 annually	Fire Protection	H	80.9	19.1	Pass	Two-thirds
Los Angeles	Los Angeles	11/5/2024	Mountains Recreation and Conservation Authority, Division 2	Special Tax	Parcel Tax: establish a \$38 special tax for fifteen years only, providing \$614,000 annually	Fire Protection	GG	75.0	25.0	Pass	Two-thirds

SUMMARY OF LOCAL GOVERNMENT BOND AND TAX MEASURES BY COUNTY, 2024 LOCAL AND GENERAL ELECTIONS

COUNTY	REGION	ELECTION DATE	AGENCY NAME	TYPE OF TAX/DEBT	AMOUNT OF BOND/TAX	PURPOSE	MEASURE	% YES	% NO	RESULT	THRESHOLD
Los Angeles	Los Angeles	11/5/2024	Mt. San Antonio Community College District	GO Bond	\$750,000,000	College Facilities	V	55.6	44.4	Pass	55%
Los Angeles	Los Angeles	11/5/2024	Palmdale	General Tax	Sales Tax: amend the city's sales and use tax ordinance to provide automatic increase to the sales and use tax rate, to the maximum permitted	General Government	PD	55.0	45.0	Pass	Majority
Los Angeles	Los Angeles	11/5/2024	Palos Verdes Unified School District	GO Bond	\$297,800,000	K-12 School Facilities	SOS	57.4	42.6	Pass	55%
Los Angeles	Los Angeles	11/5/2024	Paramount	General Tax	Business License Tax: update the existing business license tax to apply to gross receipts (retail-related business and general business taxed at the rate of \$.30 per \$1,000 gross receipts, professional services taxed rate of \$.70 per \$1,000 gross receipts, rental taxed at the rate of \$.70 per per \$1,000 gross receipts, services taxed at the rate of \$.40 per per \$1,000 gross receipts, contractors taxed at the rate of \$.40 per per \$1,000 gross receipts, long-term medical care facilities taxed at the rate of \$.35 per per \$1,000 gross receipts) generating approximately \$350,000 annually	General Government	LR	77.1	22.9	Pass	Two-thirds
Los Angeles	Los Angeles	11/5/2024	Paramount Unified School District	GO Bond	\$190,000,000	K-12 School Facilities	Q	74.6	25.4	Pass	55%
Los Angeles	Los Angeles	11/5/2024	Pasadena	GO Bond	\$195,000,000	Public Libraries	PL	72.4	27.6	Pass	Two-thirds
Los Angeles	Los Angeles	11/5/2024	Pasadena Unified School District	Special Tax	Parcel Tax: levy a \$90 per parcel for eight years, raising \$5 million annually	K-12 School Programs	EE	69.4	30.6	Pass	Two-thirds
Los Angeles	Los Angeles	11/5/2024	Pasadena Unified School District	GO Bond	\$900,000,000	K-12 School Facilities	R	65.3	34.7	Pass	55%
Los Angeles	Los Angeles	11/5/2024	Pomona Unified School District	GO Bond	\$385,000,000	K-12 School Facilities	UU	70.6	29.4	Pass	55%



SUMMARY OF LOCAL GOVERNMENT BOND AND TAX MEASURES BY COUNTY, 2024 LOCAL AND GENERAL ELECTIONS

COUNTY	REGION	ELECTION DATE	AGENCY NAME	TYPE OF TAX/DEBT	AMOUNT OF BOND/TAX	PURPOSE	MEASURE	% YES	% NO	RESULT	THRESHOLD
Los Angeles	Los Angeles	11/5/2024	Puente Hills Habitat Preservation Authority	Special Tax	Parcel Tax: 1¢ per building square footage, annual adjustments limited to 3%, until ended by voters, annual revenue/appropriation limit of approximately \$1,150,000	Fire Protection	PH	68.1	31.9	Pass	Two-thirds
Los Angeles	Los Angeles	11/5/2024	Redondo Beach	GO Bond	\$93,350,000	Fire Protection/Police Services/Emergency Medical Services	FP	71.4	28.6	Pass	Two-thirds
Los Angeles	Los Angeles	11/5/2024	Redondo Beach Unified School District	GO Bond	\$278,000,000	K-12 School Facilities	S	67.5	32.5	Pass	55%
Los Angeles	Los Angeles	11/5/2024	Rio Hondo Community College District	GO Bond	\$442,200,000	College Facilities	RH	65.1	34.9	Pass	55%
Los Angeles	Los Angeles	11/5/2024	San Gabriel Unified School District	GO Bond	\$178,000,000	K-12 School Facilities	SG	66.3	33.8	Pass	55%
Los Angeles	Los Angeles	11/5/2024	San Marino	Special Tax	Parcel Tax: ordinance to continue the Special Public Safety Tax, estimated to generate \$3,700,000 annually	Fire Protection/Police Services/Emergency Medical Services	SM	76.6	23.5	Pass	Two-thirds
Los Angeles	Los Angeles	11/5/2024	San Marino Unified School District	GO Bond	\$200,000,000	K-12 School Facilities	M	71.8	28.2	Pass	55%
Los Angeles	Los Angeles	11/5/2024	Santa Fe Springs	Special Tax	Parcel Tax: 7¢ per square foot (commercial lots) and 3½¢ per square foot (industrial/ vacant lots), for 25 years, a 2% annual inflation adjustment, raising approximately \$6,000,000 annually	Road Improvements	SFS	76.7	23.3	Pass	Two-thirds
Los Angeles	Los Angeles	11/5/2024	Santa Monica	General Tax	Business License Tax: modernize the City of Santa Monica's 1990 business license tax ordinance to improve tax equity and fairness, exempt small businesses from the tax, decrease tax rates for most retailers and restaurants, raise the corporate headquarters rate to 0.25%, remove auto dealer tax exemptions, and restore a business license processing fee, generating approximately \$3,000,000 annually	General Government	F	78.3	21.7	Pass	Majority

SUMMARY OF LOCAL GOVERNMENT BOND AND TAX MEASURES BY COUNTY, 2024 LOCAL AND GENERAL ELECTIONS

COUNTY	REGION	ELECTION DATE	AGENCY NAME	TYPE OF TAX/DEBT	AMOUNT OF BOND/TAX	PURPOSE	MEASURE	% YES	% NO	RESULT	THRESHOLD
Los Angeles	Los Angeles	11/5/2024	Santa Monica	General Tax	Parking Facility Tax: increase by 8% for users including visitors and tourists, generating approximately \$6,700,000 annually	General Government	K	74.3	25.7	Pass	Majority
Los Angeles	Los Angeles	11/5/2024	Santa Monica-Malibu Unified School District	GO Bond	\$495,000,000	K-12 School Facilities	QS	62.9	37.1	Pass	55%
Los Angeles	Los Angeles	11/5/2024	Santa Monica-Malibu Unified School District	GO Bond	\$395,000,000	K-12 School Facilities	MM	62.3	37.8	Pass	55%
Los Angeles	Los Angeles	11/5/2024	Saugus Union School District	GO Bond	\$187,000,000	K-12 School Facilities	N	48.8	51.2	Fail	55%
Los Angeles	Los Angeles	11/5/2024	Sierra Madre	Special Tax	Parcel Tax: Single-family residential parcels - \$480 per parcel per year, Multifamily residential parcels - \$576 per parcel per year, and Non-residential parcels - \$660 per parcel per year, from July 1, 2025, to July 1, 2032, to raise approximately \$2,037,000 yearly	Public Safety	PS	44.9	55.1	Fail	Majority
Los Angeles	Los Angeles	11/5/2024	South El Monte	General Tax	Sales Tax: create a one quarter cent (0.25%) sales tax that starts when the "Measure H" tax ends and continues until repealed by voters	General Government	SEM	62.3	37.7	Pass	Majority
Los Angeles	Los Angeles	11/5/2024	West Hollywood	General Tax	Sales Tax: redirect a ¼¢ sales tax if a future district sales tax within the County qualifies for a ballot and is enacted, generating approximately \$5,000,000 annually	Public Safety	WH	82.0	18.0	Pass	Majority
Los Angeles	Los Angeles	11/5/2024	Whittier City School District	GO Bond	\$99,000,000	K-12 School Facilities	W	67.7	32.3	Pass	55%
Madera	Central Valley	11/5/2024	Madera County	Special Tax	Sales Tax: continue half-cent sales tax without increasing the tax rate, renewing \$22,000,000 annually for 20 years starting in 2027	Transportation	T	52.5	47.5	Pass	Majority
Madera	Central Valley	11/5/2024	Chowchilla	Special Tax	Sales Tax: reauthorize \$0.01 sales tax, providing \$2,500,000 annually	Public Safety	N	80.8	19.2	Pass	Two-thirds
Marin	Bay Area	11/5/2024	Tamalpais Union High School District	GO Bond	\$289,000,000	K-12 School Facilities	B	65.8	34.2	Pass	55%

SUMMARY OF LOCAL GOVERNMENT BOND AND TAX MEASURES BY COUNTY, 2024 LOCAL AND GENERAL ELECTIONS

COUNTY	REGION	ELECTION DATE	AGENCY NAME	TYPE OF TAX/DEBT	AMOUNT OF BOND/TAX	PURPOSE	MEASURE	% YES	% NO	RESULT	THRESHOLD
Marin	Bay Area	11/5/2024	Bolinas-Stinson Union School District	Special Tax	Parcel Tax: \$390 parcel tax, commencing July 1, 2025 for five years, with a 3% annual increase, and exemptions for persons 65 and older, with an estimated \$682,500 generated annually	K-12 School Programs	C	72.1	28.0	Pass	Two-thirds
Marin	Bay Area	11/5/2024	Kentfield School District	GO Bond	\$48,000,000	K-12 School Facilities	E	60.4	39.6	Pass	55%
Marin	Bay Area	11/5/2024	Sausalito Marin City School District	Special Tax	Parcel Tax: \$0.15/building area square foot up to 23,000 square feet, and \$25/unimproved parcel, be adopted, providing \$1,300,000 annually for 8 years	K-12 School Programs	G	70.1	29.9	Pass	Two-thirds
Marin	Bay Area	11/5/2024	Fairfax	GO Bond	\$18,000,000	Road Improvements	J	62.0	38.0	Fail	Two-thirds
Marin	Bay Area	11/5/2024	Mill Valley	General Tax	Sales Tax: enact a \$0.01 sales tax, providing approximately \$4,200,000 annually for 10 years	General Government	L	77.3	22.7	Pass	Majority
Marin	Bay Area	11/5/2024	Novato	General Tax	Sales Tax: establish a 3/4c sales tax, providing an additional \$10,300,000 annually	General Government	M	57.9	42.1	Pass	Majority
Marin	Bay Area	11/5/2024	San Rafael	Special Tax	Parcel Tax: \$0.145 per square foot of improved building area and \$75.00 per vacant parcel, estimated to generate \$6,370,000 annually, and continuing for thirty years	Public Library, Community Center	P	52.0	48.0	Pass	Majority
Marin	Bay Area	11/5/2024	Stinson Beach Fire Protection District	Special Tax	Parcel Tax: levy \$0.42 per building area square foot, generating \$700,000 annually	Fire Protection/ Emergency Medical Services	R	81.8	18.2	Pass	Two-thirds
Mendocino	Other	11/5/2024	Albion-Little River Fire Protection District	Special Tax	Parcel Tax: replace the existing special tax of \$75 per unit with a maximum of \$300 per unit, thereafter, increasing 2% annually	Fire Protection	S	56.7	43.3	Fail	Two-thirds
Mendocino	Other	11/5/2024	Fort Bragg	General Tax	Sales Tax: impose a 0.375% transactions and use tax, anticipated to generate approximately \$800,000 annually	General Government	T	68.3	31.7	Pass	Majority
Mendocino	Other	11/5/2024	Fort Bragg	General Tax	Transient Occupancy Tax: increase from 12% to 14%, anticipated to generate approximately \$400,000 annually	General Government	U	81.5	18.5	Pass	Majority
Mendocino	Other	11/5/2024	Ukiah Valley Fire Protection District	Special Tax	Parcel Tax: \$33.50 per unit, with annual cost of living adjustments not to exceed 2%	Fire Protection	V	62.3	37.7	Fail	Two-thirds

SUMMARY OF LOCAL GOVERNMENT BOND AND TAX MEASURES BY COUNTY, 2024 LOCAL AND GENERAL ELECTIONS

COUNTY	REGION	ELECTION DATE	AGENCY NAME	TYPE OF TAX/DEBT	AMOUNT OF BOND/TAX	PURPOSE	MEASURE	% YES	% NO	RESULT	THRESHOLD
Mendocino	Other	11/5/2024	Ukiah	General Tax	Transient Occupancy Tax: increase from 10% to 13%	General Government	W	42.0	58.0	Fail	Majority
Mendocino	Other	11/5/2024	Point Arena	General Tax	Sales Tax: establish a 0.875% sales tax, providing approximately \$90,000 annually	General Government	X	78.8	21.2	Pass	Majority
Merced	Central Valley	11/5/2024	West Side Community Healthcare District	Special Tax	Parcel Tax: \$69 per parcel, increasing by no more than 3% each year thereafter, raising approximately \$600,000 annually	Emergency Medical Services	A	49.6	50.4	Fail	Two-thirds
Merced	Central Valley	11/5/2024	Delhi Unified School District	GO Bond	\$17,000,000	K-12 School Facilities	J	57.5	42.5	Pass	55%
Merced	Central Valley	11/5/2024	Weaver Union School District	GO Bond	\$20,000,000	K-12 School Facilities	K	69.0	31.0	Pass	55%
Merced	Central Valley	11/5/2024	Livingston	Special Tax	Sales Tax: adopt a 1% sales tax, generating approximately \$2,310,300 annually	Fire Protection/Police Services	L	70.7	29.3	Pass	Two-thirds
Merced	Central Valley	11/5/2024	Hilmar Unified School District	GO Bond	\$43,000,000	K-12 School Facilities	M	31.2	68.8	Fail	55%
Merced	Central Valley	11/5/2024	Merced City School District	GO Bond	\$80,000,000	K-12 School Facilities	O	65.8	34.2	Pass	55%
Merced	Central Valley	11/5/2024	Merced Community College School Facilities Improvement District	GO Bond	\$46,000,000	College Facilities	P	76.8	23.2	Pass	55%
Merced	Central Valley	11/5/2024	Merced County	Special Tax	Sales Tax: enact a 0.5% transaction and use tax, raising an estimated \$25,000,000 annually for 30 years	Public Safety	R	56.0	44.0	Fail	Two-thirds
Modoc / Siskiyou	Other	11/5/2024	Tulelake Multi-County Fire Protection District	Special Tax	Parcel Tax: \$45 per unimproved parcel, \$75 per improved parcel, and \$150 per commercial parcel, estimated to raise approximately \$85,000 annually	Fire Protection	U	66.0	34.0	Fail	Two-thirds
Mono	Other	11/5/2024	Mammoth Unified School District	GO Bond	\$70,000,000	K-12 School Facilities	J	55.5	44.5	Pass	55%
Mono	Other	11/5/2024	Mono County	General Tax	Transient Occupancy Tax: increase from 12% to 15%, providing approximately an additional \$1,100,000 annually	General Government	K	60.6	39.4	Pass	Majority

SUMMARY OF LOCAL GOVERNMENT BOND AND TAX MEASURES BY COUNTY, 2024 LOCAL AND GENERAL ELECTIONS

COUNTY	REGION	ELECTION DATE	AGENCY NAME	TYPE OF TAX/DEBT	AMOUNT OF BOND/TAX	PURPOSE	MEASURE	% YES	% NO	RESULT	THRESHOLD
Mono	Other	11/5/2024	Mammoth Lakes	General Tax	Transient Occupancy Tax: increase by 2%, generating approximately \$4,000,000 annually for 10 years	General Government	L	63.8	36.3	Pass	Majority
Mono	Other	11/5/2024	Mammoth Lakes Fire Protection District	Special Tax	Parcel Tax: \$98 per parcel for nine years, providing approximately \$925,000 annually	Fire Protection/ Emergency Medical Services	M	72.4	27.6	Pass	Two-thirds
Monterey	Other	11/5/2024	Monterey Peninsula Unified School District	GO Bond	\$340,000,000	K-12 School Facilities	A	63.9	36.1	Pass	55%
Monterey	Other	11/5/2024	Pacific Grove Unified School District	GO Bond	\$78,000,000	K-12 School Facilities	B	72.9	27.1	Pass	55%
Monterey	Other	11/5/2024	Soledad Unified School District	GO Bond	\$42,000,000	K-12 School Facilities	E	62.6	37.4	Pass	55%
Monterey	Other	11/5/2024	Salinas Union High School District	GO Bond	\$115,000,000	K-12 School Facilities	G	62.9	37.1	Pass	55%
Monterey / San Benito	Other	11/5/2024	South Monterey County Joint Union High School District	GO Bond	\$35,000,000	K-12 School Facilities	H	61.8	38.2	Pass	55%
Monterey / San Benito	Other	11/5/2024	South Monterey County Joint Union High School District	GO Bond	\$35,000,000	K-12 School Facilities	I	61.8	38.2	Pass	55%
Monterey	Other	11/5/2024	Chualar Union School District	GO Bond	\$5,600,000	K-12 School Facilities	J	63.7	36.3	Pass	55%
Monterey	Other	11/5/2024	King City Union School District	GO Bond	\$19,800,000	K-12 School Facilities	K	65.8	34.2	Pass	55%
Monterey	Other	11/5/2024	King City Union School District	GO Bond	\$21,600,000	K-12 School Facilities	L	65.8	34.2	Pass	55%
Monterey	Other	11/5/2024	Mission Union Elementary School District	GO Bond	\$1,500,000,000	K-12 School Facilities	N	67.9	32.1	Pass	55%

SUMMARY OF LOCAL GOVERNMENT BOND AND TAX MEASURES BY COUNTY, 2024 LOCAL AND GENERAL ELECTIONS

COUNTY	REGION	ELECTION DATE	AGENCY NAME	TYPE OF TAX/DEBT	AMOUNT OF BOND/TAX	PURPOSE	MEASURE	% YES	% NO	RESULT	THRESHOLD
Monterey	Other	11/5/2024	Spreckels Union Elementary School District	GO Bond	\$27,000,000	K-12 School Facilities	O	51.0	49.0	Fail	55%
Monterey	Other	11/5/2024	Washington Union Elementary School District	GO Bond	\$18,200,000	K-12 School Facilities	P	53.3	46.7	Fail	55%
Monterey	Other	11/5/2024	Monterey County	General Tax	Sales Tax: increase in unincorporated areas by 1%, providing approximately \$29,000,000 annually	General Government	AA	53.3	46.7	Pass	Majority
Monterey	Other	11/5/2024	Del Ray Oaks	General Tax	Transient Occupancy Tax: increase up to 4%, raising up to \$60,000 in additional yearly revenue	General Government	R	76.4	23.6	Pass	Majority
Monterey	Other	11/5/2024	Gonzales	General Tax	Sales Tax: increase from 1% to 1.5%, adding \$800,000 in revenues annually	General Government	S	44.6	55.4	Fail	Majority
Monterey	Other	11/5/2024	King	General Tax	Sales Tax: increase from 1% to 1.5%, adding \$1,200,000 in revenues annually, expiring in 12 years	General Government	T	43.9	56.1	Fail	Majority
Monterey	Other	11/5/2024	Marina	GO Bond	\$50,000,000	Fire Protection/Police Services/Emergency Medical Services	U	60.0	40.0	Fail	Two-thirds
Monterey	Other	11/5/2024	Monterey County Regional Fire Protection District	General Tax	Cannabis Tax: repeal Measure H, the Monterey County Regional Fire Protection District commercial cannabis tax imposed by the voters of the Fire District in 2018	Fire Protection	DD	44.2	55.9	Fail	Majority
Monterey	Other	11/5/2024	North County Public Recreation District	Special Tax	Parcel Tax: levy of \$82.00 per parcel, generating \$300,000 per year	Park and Recreation Facilities	EE	58.6	41.4	Fail	Two-thirds
Napa	Bay Area	11/5/2024	Napa Valley Transportation Authority	Special Tax	Sales Tax: continue 1/2 cent sales tax, with no increase, providing \$25,000,000 annually for 30 years, from 2025 to 2055	Transportation/Street Improvements	U	72.8	27.2	Pass	Two-thirds
Napa	Bay Area	11/5/2024	Napa Valley Unified School District	GO Bond	\$230,000,000	K-12 School Facilities	B	55.1	44.9	Pass	55%
Napa	Bay Area	11/5/2024	Napa	General Tax	Sales Tax: levy a \$0.01 sales tax, raising \$22,000,000 annually	General Government	G	57.5	42.5	Pass	Majority

SUMMARY OF LOCAL GOVERNMENT BOND AND TAX MEASURES BY COUNTY, 2024 LOCAL AND GENERAL ELECTIONS

COUNTY	REGION	ELECTION DATE	AGENCY NAME	TYPE OF TAX/DEBT	AMOUNT OF BOND/TAX	PURPOSE	MEASURE	% YES	% NO	RESULT	THRESHOLD
Napa	Bay Area	11/5/2024	St. Helena	General Tax	Real Property Transfer Tax: 1.5% - 3% of purchase price on sales over \$1,000,000 to be paid only by property buyers/sellers generating approximately \$5,300,000 annually	General Government	A2	41.0	59.0	Fail	Majority
Nevada	Other	11/5/2024	Pleasant Ridge Elementary School District	GO Bond	\$25,000,000	K-12 School Facilities	D	53.2	46.8	Fail	55%
Nevada	Other	11/5/2024	Truckee	General Tax	Sales Tax: establish a 1/2% sales tax, providing approximately \$3,500,000 annually for 15 years	General Government	E	60.9	39.1	Pass	Majority
Nevada	Other	11/5/2024	Beyers Lane Community Service District	Special Tax	Parcel Tax: \$300 per parcel per year to raise \$19,200 per year	Road Improvements	F	78.1	21.9	Pass	Two-thirds
Orange	Los Angeles	11/5/2024	Rancho Santiago Community College District	GO Bond	\$720,000,000	College Facilities	G	51.0	49.0	Fail	55%
Orange	Los Angeles	11/5/2024	Brea Olinda Unified School District	GO Bond	\$160,000,000	K-12 School Facilities	H	64.6	35.5	Pass	55%
Orange	Los Angeles	11/5/2024	Santa Ana Unified School District	GO Bond	\$355,000,000	K-12 School Facilities	I	68.9	31.1	Pass	55%
Orange	Los Angeles	11/5/2024	Tustin Unified School District	GO Bond	\$261,000,000	K-12 School Facilities	J	66.9	33.1	Pass	55%
Orange	Los Angeles	11/5/2024	Anaheim Union High School District	GO Bond	\$496,000,000	K-12 School Facilities	K	66.9	33.1	Pass	55%
Orange / Los Angeles	Los Angeles	11/5/2024	Fullerton Joint Union High School District	GO Bond	\$284,000,000	K-12 School Facilities	L	57.5	42.5	Pass	55%
Orange	Los Angeles	11/5/2024	Buena Park School District	GO Bond	\$84,000,000	K-12 School Facilities	M	67.5	32.5	Pass	55%
Orange	Los Angeles	11/5/2024	Fullerton School District	GO Bond	\$262,000,000	K-12 School Facilities	N	61.2	38.9	Pass	55%
Orange	Los Angeles	11/5/2024	La Habra City School District	GO Bond	\$73,000,000	K-12 School Facilities	O	65.5	34.5	Pass	55%

SUMMARY OF LOCAL GOVERNMENT BOND AND TAX MEASURES BY COUNTY, 2024 LOCAL AND GENERAL ELECTIONS

COUNTY	REGION	ELECTION DATE	AGENCY NAME	TYPE OF TAX/DEBT	AMOUNT OF BOND/TAX	PURPOSE	MEASURE	% YES	% NO	RESULT	THRESHOLD
Orange	Los Angeles	11/5/2024	Buena Park	General Tax	Sales Tax: establish a 1¢ sales tax, increasing to 8.75%, providing approximately \$20,000,000 annually	General Government	R	74.7	25.3	Pass	Majority
Orange	Los Angeles	11/5/2024	La Habra	General Tax	Sales Tax: reauthorize at an updated 1¢ rate, providing approximately \$15,600,000 annually, beginning on April 1, 2025	General Government	V	68.9	31.1	Pass	Majority
Orange	Los Angeles	11/5/2024	Mission Viejo	Special Tax	Transient Occupancy Tax: increase from 8% to 12%, providing an estimated \$670,000 annually	Police Services/Emergency Medical Services	Y	46.5	53.5	Fail	Two-thirds
Orange	Los Angeles	11/5/2024	Orange	General Tax	Sales Tax: establish a 0.5% transactions and use tax, providing approximately \$19,000,000 annually expiring after 10 years	General Government	Z	49.6	50.4	Fail	Majority
Orange	Los Angeles	11/5/2024	San Clemente	Special Tax	Sales Tax: establish a 1/2¢ sales tax, providing approximately \$6,750,000 annually	Beach/Coastal Maintenance	BB	64.6	35.4	Fail	Two-thirds
Orange	Los Angeles	11/5/2024	Seal Beach	General Tax	Sales Tax: establish a 1/2¢ sales tax providing approximately \$3,000,000 annually	General Government	GG	68.3	31.8	Pass	Majority
Placer	Central Valley	11/5/2024	Lincoln/Rocklin/Roseville	Special Tax	Sales tax: 1/2¢ sales tax, raising approximately \$41,000,000 annually over 30 years.	Highways/Road Improvements	B	63.8	36.2	Fail	Two-thirds
Placer	Central Valley	11/5/2024	Loomis	General Tax	Sales Tax: extend 1/4¢ sales tax, raising approximately \$925,000 annually	Public Libraries	C	71.4	28.6	Pass	Majority
Placer	Central Valley	11/5/2024	Foresthill Fire Protection District	Special Tax	Parcel Tax: \$268.38	Fire Protection/Police Services/Emergency Medical Services	D	44.0	56.1	Fail	Two-thirds
Placer	Central Valley	11/5/2024	Loomis Union School District	GO Bond	\$48,000,000	K-12 School Facilities	E	50.2	49.8	Fail	55%
Placer	Central Valley	11/5/2024	Auburn	General Tax	Transient Occupancy Tax: 2% increase, providing approximately \$162,000 annually	General Government	F	65.5	34.5	Pass	Majority
Placer	Central Valley	11/5/2024	Ackerman School District	GO Bond	\$4,000,000	K-12 School Facilities	G	51.0	49.0	Fail	55%
Placer	Central Valley	11/5/2024	Placer Union High School District	GO Bond	\$21,000,000	K-12 School Facilities	H	52.8	47.2	Fail	55%



SUMMARY OF LOCAL GOVERNMENT BOND AND TAX MEASURES BY COUNTY, 2024 LOCAL AND GENERAL ELECTIONS

COUNTY	REGION	ELECTION DATE	AGENCY NAME	TYPE OF TAX/DEBT	AMOUNT OF BOND/TAX	PURPOSE	MEASURE	% YES	% NO	RESULT	THRESHOLD
Plumas	Other	11/5/2024	Plumas	Special Tax	Sales Tax: extend existing 3/4 cent transaction and use tax	Public Safety	D	49.0	51.0	Fail	Two-thirds
Riverside	San Diego/ Inland Empire	11/5/2024	San Jacinto Unified School District	GO Bond	\$78,000,000	K-12 School Facilities	C	66.9	33.1	Pass	55%
Riverside	San Diego/ Inland Empire	11/5/2024	Riverside Community College District	GO Bond	\$954,000,000	College Facilities	CC	58.1	41.9	Pass	55%
Riverside	San Diego/ Inland Empire	11/5/2024	Beaumont Unified School District	GO Bond	\$148,000,000	K-12 School Facilities	E	53.1	46.9	Fail	55%
Riverside	San Diego/ Inland Empire	11/5/2024	Perris Elementary School District	GO Bond	\$38,000,000	K-12 School Facilities	H	70.3	29.7	Pass	55%
Riverside	San Diego/ Inland Empire	11/5/2024	Romoland School District	GO Bond	\$58,455,000	K-12 School Facilities	I	58.9	41.1	Pass	55%
Riverside	San Diego/ Inland Empire	11/5/2024	Nuvview Union School District	GO Bond	\$15,000,000	K-12 School Facilities	K	59.5	40.5	Pass	55%
Riverside	San Diego/ Inland Empire	11/5/2024	Banning Unified School District	GO Bond	\$74,000,000	K-12 School Facilities	O	64.4	35.6	Pass	55%
Riverside	San Diego/ Inland Empire	11/5/2024	Menifee Union School District	GO Bond	\$205,000,000	K-12 School Facilities	R	56.2	43.8	Pass	55%
Riverside	San Diego/ Inland Empire	11/5/2024	Palm Springs Unified School District	GO Bond	\$465,000,000	K-12 School Facilities	S	74.8	25.2	Pass	55%
Riverside	San Diego/ Inland Empire	11/5/2024	Lake Elsinore Unified School District	GO Bond	\$198,000,000	K-12 School Facilities	T	60.3	39.7	Pass	55%

SUMMARY OF LOCAL GOVERNMENT BOND AND TAX MEASURES BY COUNTY, 2024 LOCAL AND GENERAL ELECTIONS

COUNTY	REGION	ELECTION DATE	AGENCY NAME	TYPE OF TAX/DEBT	AMOUNT OF BOND/TAX	PURPOSE	MEASURE	% YES	% NO	RESULT	THRESHOLD
Riverside	San Diego/ Inland Empire	11/5/2024	Jurupa Unified School District	GO Bond	\$180,000,000	K-12 School Facilities	V	66.4	33.6	Pass	55%
Riverside	San Diego/ Inland Empire	11/5/2024	Moreno Valley Unified School District	GO Bond	\$240,000,000	K-12 School Facilities	X	69.7	30.3	Pass	55%
Riverside	San Diego/ Inland Empire	11/5/2024	Hemet	General Tax	Transient Occupancy Tax: increase by 2%, providing an additional \$200,000 annually	General Government	N	75.9	24.1	Pass	Majority
Riverside	San Diego/ Inland Empire	11/5/2024	Palm Desert	General Tax	Sales Tax: increase 1%, from 7.75% to 8.75%, generating an estimated \$25,000,000	General Government	G	65.5	34.5	Pass	Majority
Riverside	San Diego/ Inland Empire	11/5/2024	Palm Springs	General Tax	Sales Tax: enact a 1% tax for 25 years	General Government	J	70.9	29.1	Pass	Majority
Riverside	San Diego/ Inland Empire	11/5/2024	Moreno Valley	General Tax	Sales Tax: increase 1%, from 7.75% to 8.75%, generating an estimated \$30,000,000	General Government	U	74.2	25.8	Pass	Majority
Riverside	San Diego/ Inland Empire	11/5/2024	Cathedral City	General Tax	Sales Tax: increase sales tax by ½¢ providing \$5,000,000 annually	General Government	W	73.5	26.5	Pass	Majority
Riverside	San Diego/ Inland Empire	11/5/2024	Coachella	General Tax	Transient Occupancy Tax: increase from 9% to a maximum of 13%, providing approximately \$350,000 annually	General Government	Y	52.1	47.9	Pass	Majority
Riverside	San Diego/ Inland Empire	11/5/2024	Canyon Lake	General Tax	Sales Tax and Cannabis Tax: establish 0.75% transaction and use tax, 6% retail cannabis tax	General Government	Z	49.8	50.2	Fail	Majority
Riverside	San Diego/ Inland Empire	11/5/2024	Desert Hot Springs	General Tax	Sales Tax: enact a one cent local sales tax	General Government	P	78.4	21.6	Pass	Majority

SUMMARY OF LOCAL GOVERNMENT BOND AND TAX MEASURES BY COUNTY, 2024 LOCAL AND GENERAL ELECTIONS

COUNTY	REGION	ELECTION DATE	AGENCY NAME	TYPE OF TAX/DEBT	AMOUNT OF BOND/TAX	PURPOSE	MEASURE	% YES	% NO	RESULT	THRESHOLD
Sacramento	Central Valley	11/5/2024	Sacramento City Unified School District	GO Bond	\$543,000,000	K-12 School Facilities	D	74.1	25.9	Pass	55%
Sacramento	Central Valley	11/5/2024	Sacramento	Special Tax	Parcel Tax: extend at current rate generating approximately \$9,600 000 per year	Public Libraries Services	E	74.2	25.8	Pass	Two-thirds
Sacramento	Central Valley	11/5/2024	Folsom	General Tax	Sales tax: 1% generating approximately \$29,000,000	Various City Services	G	62.2	37.8	Pass	Majority
Sacramento / San Joaquin	Central Valley	11/5/2024	Galt Joint Union Elementary School District	GO Bond	\$27,000,000	K-12 School Facilities	H	56.5	43.5	Pass	55%
Sacramento / Placer	Central Valley	11/5/2024	Elverta Joint Elementary School District	GO Bond	\$4,300,000	K-12 School Facilities	J	54.8	45.2	Pass	55%
Sacramento	Central Valley	11/5/2024	Orangevale Recreation and Park District	GO Bond	\$24,000,000	Park and Recreation Facilities	L	62.8	37.2	Fail	Two-thirds
Sacramento	Central Valley	11/5/2024	Arcohe Union School District	GO Bond	\$5,800,000	K-12 School Facilities	M	50.4	49.6	Fail	55%
Sacramento	Central Valley	11/5/2024	Elk Grove Unified School District	GO Bond	\$542,000,000	K-12 School Facilities	N	60.7	39.3	Pass	55%
Sacramento / Placer	Central Valley	11/5/2024	Sacramento Metropolitan Fire District	GO Bond	\$415,000,000	Fire Services/ Emergency Medical Services/Emergency Hazardous Material Responses	O	69.1	30.9	Pass	Two-thirds
Sacramento	Central Valley	11/5/2024	San Juan Unified School District	GO Bond	\$950,000,000	K-12 School Facilities	P	60.9	39.1	Pass	55%
Sacramento	Central Valley	11/5/2024	Fulton-El Camino Recreation and Park District	GO Bond	\$24,000,000	Park and Recreation Facilities	Q	73.9	26.1	Pass	Two-thirds

SUMMARY OF LOCAL GOVERNMENT BOND AND TAX MEASURES BY COUNTY, 2024 LOCAL AND GENERAL ELECTIONS

COUNTY	REGION	ELECTION DATE	AGENCY NAME	TYPE OF TAX/DEBT	AMOUNT OF BOND/TAX	PURPOSE	MEASURE	% YES	% NO	RESULT	THRESHOLD
Sacramento	Central Valley	11/5/2024	Folsom Cordova School District School Facilities Improvement District No. 4 (Elementary Schools)	GO Bond	\$144,000,000	K-12 School Facilities	R	66.9	33.1	Pass	55%
Sacramento	Central Valley	11/5/2024	Folsom Cordova School District School Facilities Improvement District No. 4 (Middle/High Schools)	GO Bond	\$144,000,000	K-12 School Facilities	S	66.3	33.7	Pass	55%
San Benito / Monterey / Santa Cruz	Other	11/5/2024	Aromas-San Juan Unified School District	GO Bond	\$44,000,000	K-12 School Facilities	D	58.7	41.3	Pass	55%
San Benito / Santa Clara	Other / Bay Area	11/5/2024	San Benito High School District	GO Bond	\$70,000,000	K-12 School Facilities	L	49.7	50.3	Fail	55%
San Benito / Santa Clara	Other / Bay Area	11/5/2024	San Benito High School District	GO Bond	\$70,000,000	K-12 School Facilities	M	50.7	49.3	Fail	55%
San Benito	Other	11/5/2024	Hollister	General Tax	Transient Occupancy Tax: increase by 4%, from 8% to 12%, providing approximately \$300,000 annually	General Government	V	52.6	47.4	Pass	Majority
San Bernardino	San Diego/ Inland Empire	11/5/2024	Victor Valley Union High School District	GO Bond	\$180,000,000	K-12 School Facilities	X	68.2	31.8	Pass	55%
San Bernardino	San Diego/ Inland Empire	11/5/2024	Yucca Valley	General Tax	Sales Tax: 1/2¢ sales tax, raising approximately \$3,000,000 annually	Various City Services	Y	83.2	16.8	Pass	Majority

SUMMARY OF LOCAL GOVERNMENT BOND AND TAX MEASURES BY COUNTY, 2024 LOCAL AND GENERAL ELECTIONS

COUNTY	REGION	ELECTION DATE	AGENCY NAME	TYPE OF TAX/DEBT	AMOUNT OF BOND/TAX	PURPOSE	MEASURE	% YES	% NO	RESULT	THRESHOLD
San Bernardino	San Diego/ Inland Empire	11/5/2024	Yucca Valley	Special Tax	Sales Tax: 1/2% sales tax, raising approximately \$3,000,000 annually	Sewage/ Wastewater	Z	82.2	17.8	Pass	Two-thirds
San Bernardino	San Diego/ Inland Empire	11/5/2024	Victor Valley Union High School District	GO Bond	\$180,000,000	K-12 School Facilities	A	67.5	32.5	Pass	55%
San Bernardino / Riverside	San Diego/ Inland Empire	11/5/2024	Colton Joint Unified School District	GO Bond	\$225,000,000	K-12 School Facilities	BB	68.6	31.4	Pass	55%
San Bernardino	San Diego/ Inland Empire	11/5/2024	Morongo Unified School District	GO Bond	\$88,300,000	K-12 School Facilities	C	60.4	39.6	Pass	55%
San Bernardino	San Diego/ Inland Empire	11/5/2024	Redlands Unified School District	GO Bond	\$500,000,000	K-12 School Facilities	D	61.0	39.0	Pass	55%
San Bernardino	San Diego/ Inland Empire	11/5/2024	Rim of the World Unified School District	GO Bond	\$71,000,000	K-12 School Facilities	E	60.9	39.1	Pass	55%
San Bernardino	San Diego/ Inland Empire	11/5/2024	Alta Loma School District	GO Bond	\$71,000,000	K-12 School Facilities	G	53.1	47.0	Fail	55%
San Bernardino	San Diego/ Inland Empire	11/5/2024	Mountain View School District	GO Bond	\$56,000,000	K-12 School Facilities	H	63.8	36.2	Pass	55%
San Bernardino	San Diego/ Inland Empire	11/5/2024	Fontana Unified School District	GO Bond	\$408,000,000	K-12 School Facilities	I	66.4	33.6	Pass	55%
San Bernardino / Los Angeles	San Diego/ Inland Empire / Los Angeles	11/5/2024	Snowline Joint Unified School District	GO Bond	\$70,600,000	K-12 School Facilities	J	58.2	41.8	Pass	55%

SUMMARY OF LOCAL GOVERNMENT BOND AND TAX MEASURES BY COUNTY, 2024 LOCAL AND GENERAL ELECTIONS

COUNTY	REGION	ELECTION DATE	AGENCY NAME	TYPE OF TAX/DEBT	AMOUNT OF BOND/TAX	PURPOSE	MEASURE	% YES	% NO	RESULT	THRESHOLD
San Bernardino	San Diego/ Inland Empire	11/5/2024	San Bernadino County	General Tax	Transient Occupancy Tax: 4% increase, providing approximately \$9,400,000 annually	Various City Services	K	43.4	56.6	Fail	Majority
San Bernardino	San Diego/ Inland Empire	11/5/2024	Grand Terrace	General Tax	Sales Tax: 1¢ sales tax, raising approximately \$3,000,000 annually.	General Government	M	48.2	51.9	Fail	Majority
San Bernardino	San Diego/ Inland Empire	11/5/2024	Upland	General Tax	Sales Tax: 1% sales tax, raising approximately \$20,000,000 annually.	General Government	N	34.8	65.2	Fail	Majority
San Bernardino	San Diego/ Inland Empire	11/5/2024	Apple Valley	General Tax	Sales Tax: 1% sales tax, raising approximately \$9,000,000 annually.	General Government	P	64.3	35.7	Pass	Majority
San Bernardino	San Diego/ Inland Empire	11/5/2024	Rancho Cucamonga	General Tax	Transient Occupancy Tax: 2% increase, providing approximately \$1,000,000 annually	Various City Services	Q	57.8	42.3	Pass	Majority
San Bernardino	San Diego/ Inland Empire	11/5/2024	Yucaipa	General Tax	Sales Tax: 1¢ sales tax, raising approximately \$6,000,000 annually.	General Government	S	60.0	40.0	Pass	Majority
San Bernardino	San Diego/ Inland Empire	11/5/2024	Fontana	General Tax	Sales Tax: 1% sales tax, raising approximately \$46,000,000 annually.	General Government	T	51.5	48.5	Pass	Majority
San Bernardino	San Diego/ Inland Empire	11/5/2024	Bear Valley Community Healthcare District	Special Tax	Parcel Tax: extension at current rate (\$20 for unimproved parcels, \$45 for improved) for 10 years	Hospital/ Health Care Facilities	U	72.2	27.9	Pass	Two-thirds
San Diego/ Inland Empire	Other	11/5/2024	San Diego	General Tax	Sales Tax: 1/2¢ sales tax, raising approximately \$350,000 annually	Public Transit	G	49.5	50.5	Fail	Majority
San Diego/ Inland Empire	Other	11/5/2024	San Diego	General Tax	Sales Tax: 1¢ sales tax, raising approximately \$400,000 annually	General Government	E	49.7	50.3	Fail	Majority
San Diego/ Inland Empire	Other	11/5/2024	Chula Vista	General Tax	Sales Tax: renew 1/2¢ transaction and tax, raising approximately \$37,000,000 annually	Various City Services	P	73.4	26.6	Pass	Majority

SUMMARY OF LOCAL GOVERNMENT BOND AND TAX MEASURES BY COUNTY, 2024 LOCAL AND GENERAL ELECTIONS

COUNTY	REGION	ELECTION DATE	AGENCY NAME	TYPE OF TAX/DEBT	AMOUNT OF BOND/TAX	PURPOSE	MEASURE	% YES	% NO	RESULT	THRESHOLD
San Diego/ Inland Empire	Other	11/5/2024	Del Mar	General Tax	Transient Occupancy Tax: continue 13% (no change), providing approximately \$775,000 annually	Various City Services	M	71.5	28.5	Pass	Majority
San Diego/ Inland Empire	Other	11/5/2024	San Diego	General Tax	Sales Tax: continuing 1/2% sales tax, raising approximately \$350,000 annually	Various City Services	J	68.0	32.0	Pass	Majority
San Diego/ Inland Empire	Other	11/5/2024	Encinitas	General Tax	Sales Tax: 1% sales tax, raising approximately \$15,400,000 annually	Various City Services	K	48.1	51.9	Fail	Majority
San Diego/ Inland Empire	Other	11/5/2024	Escondido	General Tax	Sales Tax: 1% sales tax, raising approximately \$28,000,000 annually	Various City Services	I	61.1	38.9	Pass	Majority
San Diego/ Inland Empire	Other	11/5/2024	La Mesa	General Tax	Sales Tax: continue 3/4% sales tax, estimating \$12,000,000 annually for 20 years	Various City Services	L	81.4	18.6	Pass	Majority
San Diego/ Inland Empire	Other	11/5/2024	Lemon Grove	General Tax	Sales Tax: 1% sales tax, raising approximately \$5,957,000 annually	Various City Services	T	71.6	28.4	Pass	Majority
San Diego/ Inland Empire	Other	11/5/2024	National City	Special Tax	Parcel Tax: \$75 per single-family residential unit and \$150 per multi-family residential parcels, generating an estimated \$1,700,000 annually	Street and Park Purposes	R	33.9	66.2	Fail	Majority
San Diego/ Inland Empire	Other	11/5/2024	Oceanside	General Tax	Sales Tax: 1/2% sales tax, raising approximately \$19,000,000 annually	Various City Services	X	69.7	30.3	Pass	Majority
San Diego/ Inland Empire	Other	11/5/2024	San Marcos	General Tax	Sales Tax: 1% sales tax, raising approximately \$20,000,000 annually.	Various City Services	Q	60.4	39.6	Pass	Majority
San Diego/ Inland Empire	Other	11/5/2024	Santee	General Tax	Sales Tax: 1/2% sales tax, raising approximately \$5,500,000 annually.	Fire Services/ Emergency Medical Services/ Emergency Hazardous Material Responses	S	47.7	52.3	Fail	Majority
San Diego/ Inland Empire	Other	11/5/2024	Alpine Union School District	GO Bond	\$6,000,000	K-12 School Facilities	U	60.6	39.4	Pass	55%
San Diego/ Inland Empire	Other	11/5/2024	Bonsall Unified School District	GO Bond	\$59,000,000	K-12 School Facilities	V	52.0	48.0	Fail	55%

SUMMARY OF LOCAL GOVERNMENT BOND AND TAX MEASURES BY COUNTY, 2024 LOCAL AND GENERAL ELECTIONS

COUNTY	REGION	ELECTION DATE	AGENCY NAME	TYPE OF TAX/DEBT	AMOUNT OF BOND/TAX	PURPOSE	MEASURE	% YES	% NO	RESULT	THRESHOLD
San Diego/ Inland Empire	Other	11/5/2024	Cajon Valley Union School District	GO Bond	\$280,000,000	K-12 School Facilities	W	52.3	47.7	Fail	55%
San Diego/ Inland Empire	Other	11/5/2024	Chula Vista Elementary School District	GO Bond	\$360,000,000	K-12 School Facilities	AA	61.7	38.3	Pass	55%
San Diego/ Inland Empire	Other	11/5/2024	Dehesa School District	GO Bond	\$3,300,000	K-12 School Facilities	Y	60.3	39.7	Pass	55%
San Diego/ Inland Empire	Other	11/5/2024	Encinitas Union School District	GO Bond	\$158,300,000	K-12 School Facilities	Z	56.8	43.2	Pass	55%
San Diego/ Inland Empire	Other	11/5/2024	Fallbrook Union High School District	GO Bond	\$56,000,000	K-12 School Facilities	BB	50.3	49.8	Fail	55%
San Diego/ Inland Empire	Other	11/5/2024	Lemon Grove School District	GO Bond	\$30,000,000	K-12 School Facilities	CC	62.5	37.5	Pass	55%
San Diego/ Inland Empire	Other	11/5/2024	Lemon Grove School District	GO Bond	\$30,000,000	K-12 School Facilities	EE	64.5	35.5	Pass	55%
San Diego/ Inland Empire	Other	11/5/2024	Ramona Unified School District	GO Bond	\$26,700,000	K-12 School Facilities	GG	54.5	45.5	Fail	55%
San Diego/ Inland Empire	Other	11/5/2024	San Diego Community College District	GO Bond	\$3,500,000,000	College Facilities	HH	60.6	39.4	Pass	55%
San Diego/ Inland Empire	Other	11/5/2024	San Marcos Unified School District	GO Bond	\$324,000,000	K-12 School Facilities	JJ	57.8	42.2	Pass	55%
San Diego/ Inland Empire	Other	11/5/2024	San Ysidro School District	GO Bond	\$68,500,000	K-12 School Facilities	KK	63.9	36.1	Pass	55%
San Diego/ Inland Empire	Other	11/5/2024	San Ysidro School District	GO Bond	\$66,500,000	K-12 School Facilities	LL	63.4	36.6	Pass	55%
San Diego/ Inland Empire	Other	11/5/2024	San Ysidro School District	GO Bond	\$12,900,000	K-12 School Facilities	MM	78.0	22.1	Pass	55%



SUMMARY OF LOCAL GOVERNMENT BOND AND TAX MEASURES BY COUNTY, 2024 LOCAL AND GENERAL ELECTIONS

COUNTY	REGION	ELECTION DATE	AGENCY NAME	TYPE OF TAX/DEBT	AMOUNT OF BOND/TAX	PURPOSE	MEASURE	% YES	% NO	RESULT	THRESHOLD
San Diego/ Inland Empire	Other	11/5/2024	Santee School District	GO Bond	\$30,620,000	K-12 School Facilities	NN	52.4	47.6	Fail	55%
San Diego/ Inland Empire	Other	11/5/2024	South Bay Union School District	GO Bond	\$67,000,000	K-12 School Facilities	PP	66.0	34.0	Pass	55%
San Diego/ Inland Empire	Other	11/5/2024	South Bay Union School District	GO Bond	\$58,000,000	K-12 School Facilities	QQ	67.6	32.4	Pass	55%
San Diego/ Inland Empire	Other	11/5/2024	South Western Community College District	GO Bond	\$800,000,000	College Facilities	SW	59.0	41.0	Pass	55%
San Diego/ Inland Empire	Other	11/5/2024	Sweetwater Union High School District	GO Bond	\$647,000,000	K-12 School Facilities	RR	61.1	38.9	Pass	55%
San Diego/ Inland Empire	Other	11/5/2024	Valley Center-Pauma Unified School district	GO Bond	\$84,600,000	K-12 School Facilities	SS	53.0	47.0	Fail	55%
San Diego/ Inland Empire	Other	11/5/2024	Warner Unified School District	GO Bond	\$3,800,000	K-12 School Facilities	TT	63.4	36.6	Pass	55%
San Francisco	Bay Area	11/5/2024	San Francisco Unified School District	GO Bond	\$790,000,000	K-12 School Facilities	A	75.0	25.0	Pass	55%
San Francisco	Bay Area	11/5/2024	San Francisco	GO Bond	\$390,000,000	Public Health	B	72.8	27.2	Pass	55%
San Francisco	Bay Area	11/5/2024	San Francisco	Special Tax	Business Tax: rates between 1% and 4.5% of gross receipts above \$500,000 for an estimated annual revenue of \$25,000,000, on transportation network companies and autonomous vehicle businesses that provide passenger service	Public Transit Services	L	56.9	43.1	Pass	Majority

SUMMARY OF LOCAL GOVERNMENT BOND AND TAX MEASURES BY COUNTY, 2024 LOCAL AND GENERAL ELECTIONS

COUNTY	REGION	ELECTION DATE	AGENCY NAME	TYPE OF TAX/DEBT	AMOUNT OF BOND/TAX	PURPOSE	MEASURE	% YES	% NO	RESULT	THRESHOLD
San Francisco	Bay Area	11/5/2024	San Francisco	Special Tax	Business Tax: change annual gross receipts tax rates to between 0.1% and 3.716%, homelessness gross receipts tax rates to between 0.0162% and 1.64%, business registration fees to between \$55 and \$60,000, overpaid executive gross receipts tax rates to between 0.02% and 0.129%, and administrative office tax rates to between 2.97% and 3.694% of payroll expense; increase the gross receipts tax exemption for small businesses; and change how the City calculates these taxes; for estimated annual revenue of \$50,000,000	General Government	M	69.5	30.5	Pass	Majority
San Joaquin	Central Valley	11/5/2024	Ripon Unified School District	GO Bond	\$32,000,000	K-12 School Facilities	J	53.1	46.9	Fail	55%
San Joaquin / Sacramento / Alameda	Central Valley	11/5/2024	San Joaquin Delta Community College District	GO Bond	\$598,000,000	College Facilities	K	59.2	40.9	Pass	55%
San Joaquin	Central Valley	11/5/2024	Escalon Unified School District	GO Bond	\$27,700,000	K-12 School Facilities	L	50.0	50.0	Fail	55%
San Joaquin	Central Valley	11/5/2024	Tracy Unified School District	GO Bond	\$190,000,000	K-12 School Facilities	O	63.7	36.3	Pass	55%
San Joaquin	Central Valley	11/5/2024	Thorton Fire District	Special Tax	Parcel Tax: levy 8 cents per residential sqft, 18 cents per sqft commercial, \$20 per acre, \$20 per year vacant land, providing 1,000,000 annually	Fire Protection	S	79.0	21.0	Pass	Two-thirds
San Joaquin	Central Valley	11/5/2024	Escalon	General Tax	Sales Tax: 1¢ sales tax, raising approximately \$900,000 annually	General Government	P	74.4	25.6	Pass	Majority
San Joaquin	Central Valley	11/5/2024	Manteca	General Tax	Sales Tax: increase by 3/4¢ to 9% for 20 years, generating approximately \$13,000,000 annually	General Government	Q	50.6	49.4	Pass	Majority
San Luis Obispo	Other	11/5/2024	Atascadero Unified School District	GO Bond	\$110,000,000	K-12 School Facilities	B-24	56.6	43.4	Pass	55%
San Luis Obispo	Other	11/5/2024	Cambria Community Health Care District	GO Bond	\$5,900,000	Emergency Medical Services	C-24	76.8	23.2	Pass	Two-thirds

SUMMARY OF LOCAL GOVERNMENT BOND AND TAX MEASURES BY COUNTY, 2024 LOCAL AND GENERAL ELECTIONS

COUNTY	REGION	ELECTION DATE	AGENCY NAME	TYPE OF TAX/DEBT	AMOUNT OF BOND/TAX	PURPOSE	MEASURE	% YES	% NO	RESULT	THRESHOLD
San Luis Obispo	Other	11/5/2024	Templeton Unified School District	GO Bond	\$52,300,000	K-12 School Facilities	D-24	55.7	44.3	Pass	55%
San Luis Obispo	Other	11/5/2024	Arroyo Grande	General Tax	Sales Tax: establish a one cent transaction and use tax for 10 years, providing \$6,000,000 annually	General Government	E-24	65.0	35.1	Pass	Majority
San Luis Obispo	Other	11/5/2024	Pismo Beach	General Tax	Sales Tax: extend at one cent per dollar, providing approximately \$4,000,000 annually for 12 years	General Government	F-24	62.5	37.5	Pass	Majority
San Luis Obispo	Other	11/5/2024	Grover Beach	General Tax	Water Fee: repeal master fee schedule for water and wastewater rates adopted December 11, 2023	Water Service	G-24	64.6	35.4	Pass	Majority
San Luis Obispo	Other	11/5/2024	Lucia Mar Unified School District	GO Bond	\$143,220,000	K-12 School Facilities	H-24	55.3	44.7	Pass	55%
San Luis Obispo	Other	11/5/2024	Paso Robles	General Tax	Sales Tax: extend ½¢ sales tax, providing approximately \$5,500,000 annually	General Government	I-24	54.4	45.6	Pass	Majority
San Luis Obispo	Other	11/5/2024	Atascadero	General Tax	Sales Tax: extend ½¢ per dollar sales tax, providing approximately \$3,000,000 annually	General Government	L-24	70.7	29.3	Pass	Majority
San Mateo	Bay Area	11/5/2024	Bayshore Elementary School District	GO Bond	\$12,500,000	K-12 School Facilities	HH	71.3	28.7	Pass	55%
San Mateo	Bay Area	11/5/2024	Belmont-Redwood Shores School District	GO Bond	\$171,000,000	K-12 School Facilities	P	67.4	32.6	Pass	55%
San Mateo	Bay Area	11/5/2024	Burlingame School District	Special Tax	Parcel Tax: levy a \$0.14 per building square foot, capped at \$2,500 per parcel and \$25 per unimproved parcel, providing \$3,600,000 annually for 8 years	K-12 School Programs	GG	74.0	26.0	Pass	Two-thirds
San Mateo	Bay Area	11/5/2024	Cabrillo Unified School District	GO Bond	\$153,400,000	K-12 School Facilities	K	62.0	38.0	Pass	55%
San Mateo	Bay Area	11/5/2024	Cabrillo Unified School District	Special Tax	Parcel Tax: \$198 per parcel for 8 years, raising \$2,140,000 per year	K-12 School Programs	N	70.8	29.2	Pass	Two-thirds
San Mateo	Bay Area	11/5/2024	Jefferson Union High School District	Special Tax	Parcel Tax: \$95 per parcel for 10 years, raising \$3,300,000 annually	K-12 School Programs	Z	77.0	23.0	Pass	Two-thirds

SUMMARY OF LOCAL GOVERNMENT BOND AND TAX MEASURES BY COUNTY, 2024 LOCAL AND GENERAL ELECTIONS

COUNTY	REGION	ELECTION DATE	AGENCY NAME	TYPE OF TAX/DEBT	AMOUNT OF BOND/TAX	PURPOSE	MEASURE	% YES	% NO	RESULT	THRESHOLD
San Mateo	Bay Area	11/5/2024	Menlo Park City School District	GO Bond	\$123,600,000	K-12 School Facilities	U	72.0	28.0	Pass	55%
San Mateo	Bay Area	11/5/2024	Millbrae Elementary School District	GO Bond	\$95,000,000	K-12 School Facilities	J	63.8	36.2	Pass	55%
San Mateo	Bay Area	11/5/2024	Pacifica School District	Special Tax	Parcel Tax: \$98 per parcel for 8 years, raising \$1,100,000 annually	K-12 School Programs	EE	72.5	27.5	Pass	Two-thirds
San Mateo	Bay Area	11/5/2024	Ravenswood City School District	Special Tax	Parcel Tax: \$434 per parcel for 8 years, raising \$2,700,000 annually	K-12 School Programs	S	78.7	21.4	Pass	Two-thirds
San Mateo	Bay Area	11/5/2024	San Bruno Park School District	Special Tax	Parcel Tax: \$68 per parcel for 8 years, generating \$730,000 annually	K-12 School Programs	X	75.3	24.7	Pass	Two-thirds
San Mateo	Bay Area	11/5/2024	Woodside Elementary School District	Special Tax	Parcel Tax: extend existing parcel tax at \$366.66 per parcel for 12 years, raising approximately \$392,000 annually	K-12 School Programs	Y	77.4	22.6	Pass	Two-thirds
San Mateo	Bay Area	11/5/2024	Belmont	General Tax	Business License Tax: lower most businesses' rates with typical rates between 0.04% and 0.1% of gross receipts, described in the ordinance, maintaining \$1,300,000 annually	General Government	DD	84.7	15.3	Pass	Majority
San Mateo	Bay Area	11/5/2024	Colma	General Tax	Sales Tax: 1/2% transactions and use tax, raising an additional \$2,300,000 annually	General Government	AA	82.1	17.9	Pass	Majority
San Mateo	Bay Area	11/5/2024	East Palo Alto	General Tax	Parcel Tax: amend initiative measure requiring funds raised by the existing 2.5% tax on gross receipts when renting certain types of residential units, which raises approximately \$1,450,000 annually, to other purposes	Housing	JJ	77.4	22.6	Pass	Majority
San Mateo	Bay Area	11/5/2024	Foster City	General Tax	Business License Tax: amend with varying rates from \$0.75 to \$3 per \$1,000 of gross receipts, retaining the \$100/\$200 minimum tax and increasing the maximum tax payment both with annual inflation adjustments, generating approximately \$1,400,000 annually	General Government	V	74.2	25.8	Pass	Majority
San Mateo	Bay Area	11/5/2024	Half Moon Bay	General Tax	Sales Tax: establish a half-cent (0.5%) sales tax, providing \$2,000,000 annually	General Government	R	64.6	35.4	Pass	Majority
San Mateo	Bay Area	11/5/2024	Menlo Park	General Tax	Transient Occupancy Tax: increase from 12% to 15.5%, providing an estimated \$3,600,000 annually	General Government	CC	83.6	16.5	Pass	Majority

SUMMARY OF LOCAL GOVERNMENT BOND AND TAX MEASURES BY COUNTY, 2024 LOCAL AND GENERAL ELECTIONS

COUNTY	REGION	ELECTION DATE	AGENCY NAME	TYPE OF TAX/DEBT	AMOUNT OF BOND/TAX	PURPOSE	MEASURE	% YES	% NO	RESULT	THRESHOLD
San Mateo	Bay Area	11/5/2024	Pacifica	General Tax	Transient Occupancy Tax: increase from 12% to 15%, generating approximately \$720,000 annually	General Government	M	77.7	22.3	Pass	Majority
San Mateo	Bay Area	11/5/2024	Redwood City	General Tax	Business License Tax: increase base rate to \$90 and the incremental tax rate to a range from \$10 to \$250 per employee, depending on the type and size of the business, generating an estimated \$7,000,000 annually	General Government	BB	83.8	16.2	Pass	Majority
San Mateo	Bay Area	11/5/2024	San Bruno	GO Bond	\$102,000,000	Street/Storm Drain Improvements	Q	73.1	26.9	Pass	Two-thirds
San Mateo	Bay Area	11/5/2024	South San Francisco	General Tax	Business License Tax: increase in rates varying with the size of the business, as described in the ordinance, providing approximately \$2,600,000 annually	General Government	W	80.9	19.1	Pass	Majority
San Mateo	Bay Area	11/5/2024	Broadmoor Police Protection District	Special Tax	Parcel Tax: establish a limited (5 year) supplemental special tax on each parcel of real property, commencing July 1, 2025 and ending June 30, 2030, estimated to raise \$700,000 each year.	Police Services	I	57.4	42.6	Fail	Two-thirds
Santa Barbara	Other	11/5/2024	Santa Barbara County	General Tax	Transient Occupancy Tax: increase from 12% to 14%, providing approximately \$3,000,000 annually	General Government	H2024	67.1	32.9	Pass	Majority
Santa Barbara	Other	11/5/2024	College School District	GO Bond	\$18,000,000	K-12 School Facilities	L2024	52.1	47.9	Fail	55%
Santa Barbara	Other	11/5/2024	Hope Elementary School District	GO Bond	\$40,300,000	K-12 School Facilities	Y2024	59.4	40.6	Pass	55%
Santa Barbara	Other	11/5/2024	Lompoc Unified School District	GO Bond	\$160,000,000	K-12 School Facilities	M2024	59.7	40.3	Pass	55%
Santa Barbara	Other	11/5/2024	Santa Barbara Community College District	GO Bond	\$198,000,000	College Facilities	P2024	66.2	33.9	Pass	55%
Santa Barbara / San Luis Obispo	Other	11/5/2024	Santa Maria Joint Union High School District	GO Bond	\$194,000,000	K-12 School Facilities	J2024	53.4	46.6	Fail	55%

SUMMARY OF LOCAL GOVERNMENT BOND AND TAX MEASURES BY COUNTY, 2024 LOCAL AND GENERAL ELECTIONS

COUNTY	REGION	ELECTION DATE	AGENCY NAME	TYPE OF TAX/DEBT	AMOUNT OF BOND/TAX	PURPOSE	MEASURE	% YES	% NO	RESULT	THRESHOLD
Santa Barbara / San Luis Obispo	Other	11/5/2024	Santa Maria-Bonita School District	GO Bond	\$77,000,000	K-12 School Facilities	K2024	62.3	37.7	Pass	55%
Santa Barbara	Other	11/5/2024	Buellton	General Tax	Transient Occupancy Tax: increase from 12% to 14% for 25 years, providing an estimated \$600,000 annually	General Government	D2024	54.2	45.8	Pass	Majority
Santa Barbara	Other	11/5/2024	Carpinteria	General Tax	Transient Occupancy Tax: increase from 12% to 15%, providing approximately an additional \$750,000 annually	General Government	B2024	75.6	24.5	Pass	Majority
Santa Barbara	Other	11/5/2024	Santa Barbara	General Tax	Sales Tax: increase by one-half percent, from 8.75% to 9.25%,	General Government	I2024	63.4	36.6	Pass	Majority
Santa Barbara	Other	11/5/2024	Solvang	General Tax	Transient Occupancy Tax: increase from 12% to 14%, providing an additional \$1,000,000 annually	General Government	E2024	67.2	32.8	Pass	Majority
Santa Clara	Bay Area	11/5/2024	Gilroy	Special Tax	Sales Tax: enact a 0.25% (one-quarter of one percent) transactions and use tax	Fire Protection/Police Services/Emergency Medical Services	C	60.5	39.5	Fail	Two-thirds
Santa Clara	Bay Area	11/5/2024	Sunnyvale	GO Bond	\$290,000,000	Public Libraries	E	59.3	40.7	Fail	Two-thirds
Santa Clara	Bay Area	11/5/2024	Mountain View	General Tax	Property Transfer Tax: raise the existing tax on residential/commercial property sales above \$6,000,000 only, up to \$15.00 per \$1,000, generating about \$9,500,000 in locally controlled funding annually	General Government	G	72.3	27.7	Pass	Majority
Santa Clara	Bay Area	11/5/2024	Santa Clara	GO Bond	\$400,000,000	Public Libraries/Street Improvements	I	69.4	30.6	Pass	Two-thirds
Santa Clara	Bay Area	11/5/2024	Milpitas	General Tax	Sales Tax: continue the existing voter-approved ¼-cent sales tax, providing approximately \$7,000,000 annually for 8 additional years	General Government	J	80.2	19.9	Pass	Majority
Santa Clara	Bay Area	11/5/2024	Campbell	General Tax	Sales Tax: establish a locally controlled 1/2¢ transaction and use tax providing approximately \$7,000,000 annually	General Government	K	72.1	28.0	Pass	Majority
Santa Clara	Bay Area	11/5/2024	East Side Union High School District	Special Tax	Parcel Tax: \$49 per parcel, raising \$6,400,000 annually for five years	K-12 School Programs	N	72.9	27.1	Pass	Two-thirds

SUMMARY OF LOCAL GOVERNMENT BOND AND TAX MEASURES BY COUNTY, 2024 LOCAL AND GENERAL ELECTIONS

COUNTY	REGION	ELECTION DATE	AGENCY NAME	TYPE OF TAX/DEBT	AMOUNT OF BOND/TAX	PURPOSE	MEASURE	% YES	% NO	RESULT	THRESHOLD
Santa Clara	Bay Area	11/5/2024	Campbell Union High School District	GO Bond	\$474,000,000	K-12 School Facilities	P	64.7	35.3	Pass	55%
Santa Clara	Bay Area	11/5/2024	Milpitas Unified School District	Special Tax	Parcel Tax: \$119 per parcel, providing approximately \$2,200,000 annually for 8 years	K-12 School Programs	Q	71.3	28.7	Pass	Two-thirds
Santa Clara	Bay Area	11/5/2024	San Jose Unified School District	GO Bond	\$1,150,000,000	K-12 School Facilities	R	64.7	35.3	Pass	55%
Santa Clara	Bay Area	11/5/2024	Mount Pleasant Elementary School District	GO Bond	\$28,000,000	K-12 School Facilities	S	70.1	29.9	Pass	55%
Santa Clara	Bay Area	11/5/2024	Mount Pleasant Elementary School District	GO Bond	\$24,000,000	K-12 School Facilities	T	70.5	29.6	Pass	55%
Santa Clara	Bay Area	11/5/2024	Moreland School District	Special Tax	Parcel Tax: renew its expiring \$142 annual parcel tax, without increase, providing \$1,500,000 annually for 8 years	K-12 School Programs	U	77.2	22.8	Pass	Two-thirds
Santa Clara	Bay Area	11/5/2024	Union School District	Special Tax	Parcel Tax: \$148 per parcel, generating approximately \$2,000,000 annually for 7 years	K-12 School Programs	V	70.5	29.5	Pass	Two-thirds
Santa Clara	Bay Area	11/5/2024	Franklin-McKinley School District	Special Tax	Parcel Tax: renew at \$192 per parcel, with annual adjustments, raising approximately \$3,300,000 annually for 9 years	K-12 School Programs	W	77.4	22.6	Pass	Two-thirds
Santa Clara	Bay Area	11/5/2024	Evergreen Elementary School District	Special Tax	Parcel Tax: renew at \$125 per parcel for seven years, raising approximately \$3,300,000 per year	K-12 School Programs	X	69.5	30.5	Pass	Two-thirds
Santa Clara	Bay Area	11/5/2024	Sunnyvale School District	Special Tax	Parcel Tax: extend its existing \$59 per parcel tax providing \$1,000,000 annually for 8 years	K-12 School Programs	Y	82.2	17.8	Pass	Two-thirds
Santa Clara	Bay Area	11/5/2024	Cupertino Union School District	GO Bond	\$347,000,000	K-12 School Facilities	Z	61.1	38.9	Pass	55%
Santa Clara	Bay Area	11/5/2024	Mountain View Whisman School District	Special Tax	Parcel Tax: renew at \$0.15/building area square foot capped at \$1,750/parcel and \$25/unimproved parcel, raising approximately \$5,400,000 annually for 8 years	K-12 School Programs	AA	75.3	24.7	Pass	Two-thirds

SUMMARY OF LOCAL GOVERNMENT BOND AND TAX MEASURES BY COUNTY, 2024 LOCAL AND GENERAL ELECTIONS

COUNTY	REGION	ELECTION DATE	AGENCY NAME	TYPE OF TAX/DEBT	AMOUNT OF BOND/TAX	PURPOSE	MEASURE	% YES	% NO	RESULT	THRESHOLD
Santa Clara	Bay Area	11/5/2024	Cambrian School District	Special Tax	Parcel Tax: continue the annual parcel tax that was approved by 67% of voters in 2018, with no changes	K-12 School Programs	BB	77.1	22.9	Pass	Majority
Santa Clara	Bay Area	11/5/2024	Los Gatos Union School District	GO Bond	\$163,000,000	K-12 School Facilities	CC	66.4	33.6	Pass	55%
Santa Clara	Bay Area	11/5/2024	Los Altos School District	GO Bond	\$350,000,000	K-12 School Facilities	EE	56.2	43.8	Pass	55%
Santa Clara	Bay Area	11/5/2024	Orchard School District	GO Bond	\$30,000,000	K-12 School Facilities	GG	72.5	27.5	Pass	55%
Santa Cruz	Other	11/5/2024	Bonny Doon Elementary School District	GO Bond	\$7,000,000	K-12 School Facilities	L	67.5	32.5	Pass	55%
Santa Cruz / Monterey	Other	11/5/2024	Pajaro Valley Unified School District	GO Bond	\$315,000,000	K-12 School Facilities	M	58.2	41.8	Pass	55%
Santa Cruz	Other	11/5/2024	Live Oak School District	GO Bond	\$45,000,000	K-12 School Facilities	N	48.1	52.0	Fail	55%
Santa Cruz	Other	11/5/2024	Scotts Valley School District	GO Bond	\$85,000,000	K-12 School Facilities	O	55.3	44.7	Pass	55%
Santa Cruz	Other	11/5/2024	Soquel Union Elementary School District	GO Bond	\$73,000,000	K-12 School Facilities	P	56.3	43.7	Pass	55%
Santa Cruz	Other	11/5/2024	Santa Cruz County	Special Tax	Parcel Tax: \$87 per parcel per year, raising approximately \$7,300,000 annually	Beach Maintenance/Water Conservation	Q	60.2	39.8	Pass	Majority
Santa Cruz	Other	11/5/2024	Central Fire District of Santa Cruz County	GO Bond	\$221,000,000	Fire Protection/Emergency Medical Services	R	57.5	42.5	Fail	Two-thirds
Santa Cruz	Other	11/5/2024	Scotts Valley Fire Protection District	GO Bond	\$24,500,000	Fire Protection/Emergency Medical Services	S	61.8	38.2	Fail	Two-thirds
Santa Cruz	Other	11/5/2024	Zayante Fire Protection District	Special Tax	Parcel Tax: \$50 for vacant parcels less than 5 acres, \$100 for vacant parcels 5 acres or more, and \$290 for residential, commercial, raising an estimated \$440,000 annually	Fire Protection	T	71.7	28.4	Pass	Two-thirds



SUMMARY OF LOCAL GOVERNMENT BOND AND TAX MEASURES BY COUNTY, 2024 LOCAL AND GENERAL ELECTIONS

COUNTY	REGION	ELECTION DATE	AGENCY NAME	TYPE OF TAX/DEBT	AMOUNT OF BOND/TAX	PURPOSE	MEASURE	% YES	% NO	RESULT	THRESHOLD
Santa Cruz	Other	11/5/2024	San Lorenzo Valley Water District	General Tax	Water Service Charge: repeal all fixed water charges adopted under District Resolution No. 2024, except the regular Service Charge and the Private Fire Service Charge, and limiting future increases to the regular Water Service Charge to 2% per calendar year until January 1, 2049	Water Service	U	35.9	64.2	Fail	Majority
Santa Cruz	Other	11/5/2024	Scotts Valley	General Tax	Business License Tax: raise the base rate from \$90 to \$150 per business and with rates increasing incrementally for larger businesses based on gross receipts as provided in the ordinance, generating approximately \$1,100,000 annually	General Government	X	72.1	27.9	Pass	Majority
Santa Cruz	Other	11/5/2024	Capitola	General Tax	Sales Tax: 0.5% sales tax, generating an estimated \$2,200,000 annually, for 10 years	General Government	Y	67.5	32.5	Pass	Majority
Santa Cruz	Other	11/5/2024	Santa Cruz	General Tax	Beverage Tax: \$0.02 per ounce for sugar sweetened beverages, generating \$1,300,000 annually	General Government	Z	52.4	47.7	Pass	Majority
Santa Cruz / Santa Clara	Other	11/5/2024	Lakeside Joint School District	Special Tax	Parcel Tax: renew at the current \$647 rate, providing \$500,000 annually for 8 years, with a possible increase not to exceed 3% annually	K-12 School Programs	HH	69.6	30.4	Pass	Two-thirds
Shasta	Central Valley	11/5/2024	Cottonwood Union School District	GO Bond	\$9,600,000	K-12 School Facilities	E	62.4	37.6	Pass	55%
Shasta	Central Valley	11/5/2024	Burney Fire Protection District	Special Tax	Parcel Tax: a maximum rate of \$75 per single-family home, raising approximately \$237,994 annually	Fire Services/ Emergency Medical Services/Emergency Hazardous Material Responses	F	72.8	27.2	Pass	Two-thirds
Shasta	Central Valley	11/5/2024	Bella Vista Elementary School District	GO Bond	\$4,400,000	K-12 School Facilities	G	57.7	42.3	Pass	55%
Shasta	Central Valley	11/5/2024	Junction Elementary School District	GO Bond	\$6,100,000	K-12 School Facilities	H	51.3	48.7	Fail	55%

SUMMARY OF LOCAL GOVERNMENT BOND AND TAX MEASURES BY COUNTY, 2024 LOCAL AND GENERAL ELECTIONS

COUNTY	REGION	ELECTION DATE	AGENCY NAME	TYPE OF TAX/DEBT	AMOUNT OF BOND/TAX	PURPOSE	MEASURE	% YES	% NO	RESULT	THRESHOLD
Shasta	Central Valley	11/5/2024	Cascade Union Elementary School District	GO Bond	\$16,500,000	K-12 School Facilities	I	58.6	41.4	Pass	55%
Shasta	Central Valley	11/5/2024	Gateway Unified School District	GO Bond	\$65,000,000	K-12 School Facilities	J	55.1	44.9	Pass	55%
Shasta	Central Valley	11/5/2024	Columbia Elementary School District	GO Bond	\$12,900,000	K-12 School Facilities	K	52.4	47.6	Fail	55%
Shasta	Central Valley	11/5/2024	Shasta Union High School District	GO Bond	\$56,600,000	K-12 School Facilities	M	59.5	40.5	Pass	55%
Shasta	Central Valley	11/5/2024	Pacheco Union School District	GO Bond	\$14,500,000	K-12 School Facilities	N	51.2	48.8	Fail	55%
Shasta	Central Valley	11/5/2024	Pacheco Union School District	GO Bond	\$14,700,000	K-12 School Facilities	O	48.1	51.9	Fail	55%
Siskiyou	Other	11/5/2024	Dunsmuir	General Tax	Transient Occupancy Tax: increase from 10% to 12% on July 1, 2025, with an estimated increase of \$60,000	General Government	A	72.6	27.4	Pass	Majority
Siskiyou	Other	11/5/2024	Mount Shasta	Special Tax	Sales Tax: 1% transaction and use tax, raising approximately \$1,600,000 annually	General Government	B	49.3	50.7	Fail	Two-thirds
Siskiyou	Other	11/5/2024	Siskiyou Union High School District	GO Bond	\$22,000,000	K-12 School Facilities	Z	63.8	36.2	Pass	55%
Siskiyou	Other	11/5/2024	Weed Union Elementary School District	GO Bond	\$6,500,000	K-12 School Facilities	Y	54.8	45.2	Fail	55%
Siskiyou	Other	11/5/2024	Yreka	General Tax	Sales Tax: 1% sales tax, providing approximately \$2,400,000 annually	General Government	V	53.2	46.8	Pass	Majority
Solano	Bay Area	11/5/2024	Vacaville Unified School District	GO Bond	\$317,000,000	K-12 School Facilities	E	49.9	50.1	Fail	55%
Solano	Bay Area	11/5/2024	Benicia	Special Tax	Sales Tax: increase by 0.5%, providing approximately \$4,000,000 annually	Street Improvements	F	60.9	39.1	Pass	Majority

SUMMARY OF LOCAL GOVERNMENT BOND AND TAX MEASURES BY COUNTY, 2024 LOCAL AND GENERAL ELECTIONS

COUNTY	REGION	ELECTION DATE	AGENCY NAME	TYPE OF TAX/DEBT	AMOUNT OF BOND/TAX	PURPOSE	MEASURE	% YES	% NO	RESULT	THRESHOLD
Solano	Bay Area	11/5/2024	Benicia	General Tax	Real Property Transfer Tax: \$4.00 per \$1,000.00 of valuation for properties \$2,000,000 and under, \$6.00 per \$1,000.00 of valuation for properties over \$2,000,000 to \$10,000,000, and \$8.00 per \$1,000.00 of valuation for properties over \$10,000,000	General Government	H	58.9	41.1	Pass	Majority
Solano	Bay Area	11/5/2024	Dixon	General Tax	Sales Tax: establish a 1 cent sales tax, providing approximately \$3,000,000 annually	General Government	J	55.7	44.3	Pass	Majority
Solano	Bay Area	11/5/2024	Rio Vista	General Tax	Sales Tax: 1% transaction and use tax for 5 years, generating up to \$1,750,000 annually	General Government	K	63.1	36.9	Pass	Majority
Solano	Bay Area	11/5/2024	Fairfield	General Tax	Business License Tax: modernize and simplify Fairfield's business license ordinance, with rates of \$55 and up, and other rates as specified in the ordinance, providing approximately \$1,000,000 annually	General Government	L	71.3	28.8	Pass	Majority
Solano	Bay Area	11/5/2024	Fairfield	General Tax	Transient Occupancy Tax: increase by 2%, from 10% to 12%, raising approximately \$600,000 per year	General Government	M	68.6	31.4	Pass	Majority
Solano	Bay Area	11/5/2024	Travis Unified School District	GO Bond	\$65,000,000	K-12 School Facilities	R	60.7	39.3	Pass	55%
Solano	Bay Area	11/5/2024	Suisun City	General Tax	Sales Tax: replace at the rate of one and three quarters cent per dollar (1.75%) for 15 years, generating approximately \$6,766,000 annually	General Government	S	72.1	27.9	Pass	Majority
Sonoma	Bay Area	11/5/2024	Sonoma County	Special Tax	Sales Tax: establish a ¼-cent sales tax, providing \$30,000,000 annually	Childcare and Early Education	I	62.8	37.2	Pass	Majority
Sonoma	Bay Area	11/5/2024	Piner-Olivet Union School District	GO Bond	\$29,500,000	K-12 School Facilities	K	56.3	43.7	Pass	55%
Sonoma	Bay Area	11/5/2024	Waugh School District	Special Tax	Parcel Tax: \$89 per year, raising approximately \$545,000 annually, for four years	K-12 School Programs	L	62.7	37.3	Fail	Two-thirds
Sonoma	Bay Area	11/5/2024	Roseland School District	GO Bond	\$12,000,000	K-12 School Facilities	M	67.3	32.7	Pass	55%
Sonoma	Bay Area	11/5/2024	Sebastopol Union School District	GO Bond	\$24,000,000	K-12 School Facilities	N	62.4	37.6	Pass	55%

SUMMARY OF LOCAL GOVERNMENT BOND AND TAX MEASURES BY COUNTY, 2024 LOCAL AND GENERAL ELECTIONS

COUNTY	REGION	ELECTION DATE	AGENCY NAME	TYPE OF TAX/DEBT	AMOUNT OF BOND/TAX	PURPOSE	MEASURE	% YES	% NO	RESULT	THRESHOLD
Sonoma	Bay Area	11/5/2024	Bellevue Union School District	GO Bond	\$38,500,000	K-12 School Facilities	P	60.4	39.6	Pass	55%
Sonoma	Bay Area	11/5/2024	Healdsburg Unified School District, School Facilities Improvement District No. 1	GO Bond	\$49,500,000	K-12 School Facilities	R	64.8	35.2	Pass	55%
Sonoma	Bay Area	11/5/2024	Sonoma	General Tax	Sales Tax: adopt a ½ percent sales tax, providing about \$3,000,000 yearly	General Government	T	58.5	41.5	Pass	Majority
Sonoma	Bay Area	11/5/2024	Sebastopol	General Tax	Sales Tax: establish a ½-cent sales tax generating approximately \$1,520,000 annually, terminating after 12 years	General Government	U	72.1	27.9	Pass	Majority
Sonoma	Bay Area	11/5/2024	Windsor Unified School District	GO Bond	\$122,500,000	K-12 School Facilities	V	50.3	49.7	Fail	55%
Sonoma	Bay Area	11/5/2024	Sonoma County Library District	Special Tax	Sales Tax: renew the current 1/8¢ sales tax, providing \$18,000,000 annually	Public Libraries Services	W	68.1	31.9	Pass	Two-thirds
Sonoma	Bay Area	11/5/2024	Wright Elementary School District	GO Bond	\$29,200,000	K-12 School Facilities	X	58.0	42.0	Pass	55%
Sonoma	Bay Area	11/5/2024	Petaluma City Elementary School District	GO Bond	\$70,000,000	K-12 School Facilities	Z	67.0	33.0	Pass	55%
Sonoma / Marin	Bay Area	11/5/2024	Petaluma Joint Union High School District	GO Bond	\$159,000,000	K-12 School Facilities	AA	62.8	37.2	Pass	55%
Sonoma	Bay Area	11/5/2024	Cotati-Rohnert Park Unified School District	GO Bond	91500000	K-12 School Facilities	BB	70.4	29.6	Pass	55%
Sonoma	Bay Area	11/5/2024	Cloverdale	General Tax	Sales Tax: establish a ¾¢ sales tax, providing approximately \$1,600,000 annually	General Government	DD	57.0	43.0	Pass	Majority
Sonoma	Bay Area	11/5/2024	Santa Rosa	General Tax	Business Tax: increase the maximum tax, adjusting rates and taxing short-term rental businesses, as described in the voter pamphlet, providing \$3,000,000 annually	General Government	EE	64.6	35.5	Pass	Majority

SUMMARY OF LOCAL GOVERNMENT BOND AND TAX MEASURES BY COUNTY, 2024 LOCAL AND GENERAL ELECTIONS

COUNTY	REGION	ELECTION DATE	AGENCY NAME	TYPE OF TAX/DEBT	AMOUNT OF BOND/TAX	PURPOSE	MEASURE	% YES	% NO	RESULT	THRESHOLD
Sonoma	Bay Area	11/5/2024	Santa Rosa	General Tax	Transient Occupancy Tax: increase by 2%, providing \$1,200,000 annually	General Government	FF	67.6	32.4	Pass	Majority
Stanislaus	Central Valley	11/5/2024	Ceres Unified School District	GO Bond	\$114,000,000	K-12 School Facilities	Y	66.4	33.7	Pass	55%
Stanislaus	Central Valley	11/5/2024	Denair Unified School District	GO Bond	\$34,300,000	K-12 School Facilities	Z	64.2	35.8	Pass	55%
Stanislaus	Central Valley	11/5/2024	Hughson Unified School District	GO Bond	\$46,000,000	K-12 School Facilities	B	60.5	39.5	Pass	55%
Stanislaus	Central Valley	11/5/2024	Newman-Crows Landing Unified School District	GO Bond	\$30,000,000	K-12 School Facilities	S	59.4	40.6	Pass	55%
Stanislaus	Central Valley	11/5/2024	Newman-Crows Landing Unified School District	GO Bond	\$27,000,000	K-12 School Facilities	T	61.4	38.6	Pass	55%
Stanislaus / San Joaquin	Central Valley	11/5/2024	Oakdale Joint Unified School District	GO Bond	\$105,500,000	K-12 School Facilities	G	58.2	41.8	Pass	55%
Stanislaus	Central Valley	11/5/2024	Riverbank Unified School District	GO Bond	\$21,600,000	K-12 School Facilities	E	67.7	32.3	Pass	55%
Stanislaus	Central Valley	11/5/2024	Waterford Unified School District	GO Bond	\$14,000,000	K-12 School Facilities	W	52.9	47.1	Fail	55%
Stanislaus	Central Valley	11/5/2024	Keyes Union School District	GO Bond	\$8,500,000	K-12 School Facilities	U	71.3	28.8	Pass	55%
Stanislaus	Central Valley	11/5/2024	Modesto City Elementary School District	GO Bond	\$85,000,000	K-12 School Facilities	X	68.5	31.5	Pass	55%
Stanislaus	Central Valley	11/5/2024	Salida Union School District	GO Bond	\$16,000,000	K-12 School Facilities	Q	64.5	35.5	Pass	55%
Stanislaus	Central Valley	11/5/2024	Stanislaus Union School District	GO Bond	\$45,000,000	K-12 School Facilities	R	64.3	35.7	Pass	55%
Stanislaus	Central Valley	11/5/2024	Keyes Fire Protection District	GO Bond	\$7,000,000	Fire Protection	H	74.3	25.8	Pass	Two-thirds

SUMMARY OF LOCAL GOVERNMENT BOND AND TAX MEASURES BY COUNTY, 2024 LOCAL AND GENERAL ELECTIONS

COUNTY	REGION	ELECTION DATE	AGENCY NAME	TYPE OF TAX/DEBT	AMOUNT OF BOND/TAX	PURPOSE	MEASURE	% YES	% NO	RESULT	THRESHOLD
Stanislaus	Central Valley	11/5/2024	West Stanislaus County Fire Protection District	Special Tax	Parcel Tax: \$125 for single-family residential and mobile homes, \$63 for multi-family residential, \$94 for duplex/triplex residential, \$0.06 per building square foot for commercial and light industrial structures, \$0.13 per building square foot for heavy industrial structures, and \$0.13 per utilized square foot for high hazard outdoor storage, estimated to generate \$540,000 annually	Fire Protection	V	65.9	34.1	Fail	Two-thirds
Stanislaus	Central Valley	11/5/2024	West Side Community Health Care District	Special Tax	Parcel Tax: \$69 per parcel beginning FY 2025-2026, increasing by up to 3% annually, raising approximately \$600,000 annually	Emergency Medical Services	A	56.4	43.7	Fail	Two-thirds
Stanislaus	Central Valley	11/5/2024	Stanislaus County	General Tax	Cannabis Tax: up to 4% of gross receipts for distribution, manufacturing, and testing, 8% of gross receipts for retail, and 4% of gross receipts or up to \$8 per square foot of canopy for commercial cannabis cultivation, generating \$1,700,000 million annually	General Government	P	67.2	32.8	Pass	Majority
Stanislaus	Central Valley	11/5/2024	Turlock	General Tax	Transient Occupancy Tax: increase up to 14%, raising approximately \$1,100,000 annually	General Government	C	62.4	37.6	Pass	Majority
Sutter	Central Valley	11/5/2024	Sutter Union High School District	GO Bond	\$13,800,000	K-12 School Facilities	C	51.2	48.9	Fail	55%
Sutter	Central Valley	11/5/2024	Yuba City	General Tax	Sales Tax: 1% transaction and use tax, providing approximately \$17,500,000 annually	General Government	D	46.1	53.9	Fail	Majority
Tehama	Central Valley	11/5/2024	Corning Union Elementary School District	GO Bond	\$13,700,000	K-12 School Facilities	J	60.7	39.3	Pass	55%
Tehama	Central Valley	11/5/2024	Lassen View Elementary School District	GO Bond	\$3,500,000	K-12 School Facilities	K	56.8	43.2	Pass	55%
Tehama / Shasta	Central Valley	11/5/2024	Red Bluff Joint Union High School District	GO Bond	\$33,600,000	K-12 School Facilities	L	47.8	52.2	Fail	55%
Tehama	Central Valley	11/5/2024	Red Bluff Union Elementary School District	GO Bond	\$19,000,000	K-12 School Facilities	M	51.2	48.8	Fail	55%

SUMMARY OF LOCAL GOVERNMENT BOND AND TAX MEASURES BY COUNTY, 2024 LOCAL AND GENERAL ELECTIONS

COUNTY	REGION	ELECTION DATE	AGENCY NAME	TYPE OF TAX/DEBT	AMOUNT OF BOND/TAX	PURPOSE	MEASURE	% YES	% NO	RESULT	THRESHOLD
Tehama	Central Valley	11/5/2024	Red Bluff	Special Tax	Sales Tax: a ¾ % transactions and use tax, estimated to raise approximately \$3,800,000 annually for 20 years	Street Improvements	R	65.8	34.3	Fail	Two-thirds
Trinity	Other	11/5/2024	Greater Hayford Valley Park and Recreation District	Special Tax	Parcel Tax: \$30 per year per parcel, providing \$80,000 annually, until repealed	Park and Recreation Facilities	M	74.7	25.3	Pass	Two-thirds
Tulare	Central Valley	11/5/2024	Burton Elementary School District	GO Bond	\$7,100,000	K-12 School Facilities	G	56.2	43.8	Pass	55%
Tulare	Central Valley	11/5/2024	Visalia	General Tax	Cannabis Tax: up to 10% of gross receipts, or up to \$10/square foot for cultivation, raising approximately \$500,000 annually	General Government	O	71.3	28.7	Pass	Majority
Tulare	Central Valley	11/5/2024	Ducor Union Elementary School District	GO Bond	\$2,900,000	K-12 School Facilities	M	51.9	48.1	Fail	55%
Tulare	Central Valley	11/5/2024	Earlimart Elementary School District	GO Bond	\$8,500,000	K-12 School Facilities	H	81.6	18.4	Pass	55%
Tulare	Central Valley	11/5/2024	Exeter Unified School District	GO Bond	\$26,600,000	K-12 School Facilities	I	50.5	49.5	Fail	55%
Tulare	Central Valley	11/5/2024	Pleasant View Elementary School District	GO Bond	\$3,000,000	K-12 School Facilities	J	71.4	28.6	Pass	55%
Tulare	Central Valley	11/5/2024	Sequoia Union Elementary School District	GO Bond	\$3,400,000	K-12 School Facilities	L	49.7	50.4	Fail	55%
Tulare / Kings	Central Valley	11/5/2024	Tulare Joint Union High School District	GO Bond	\$80,000,000	K-12 School Facilities	E	60.9	39.2	Pass	55%
Tuolumne	Other	11/5/2024	Tuolumne County	General Tax	Sales Tax: increase from 7.25% to 8.25% in the unincorporated areas of Tuolumne County, providing approximately \$6,200,000 in annual revenue, expiring in 20 years	General Government	Z	43.0	57.0	Fail	Majority
Tuolumne	Other	11/5/2024	Summerville Union High School District	GO Bond	\$13,000,000	K-12 School Facilities	B	47.9	52.1	Fail	55%

SUMMARY OF LOCAL GOVERNMENT BOND AND TAX MEASURES BY COUNTY, 2024 LOCAL AND GENERAL ELECTIONS

COUNTY	REGION	ELECTION DATE	AGENCY NAME	TYPE OF TAX/DEBT	AMOUNT OF BOND/TAX	PURPOSE	MEASURE	% YES	% NO	RESULT	THRESHOLD
Ventura	Los Angeles	11/5/2024	Oxnard Community Facilities District No. 5	Special Tax	Parcel Tax: continue current funding for Community Facilities District No. 5 (RiverPark)	Park and Recreation Facilities	I	75.6	24.4	Pass	Majority
Ventura	Los Angeles	11/5/2024	Oxnard Community Facilities District No. 5	Special Tax	Parcel Tax: repeal all special taxes specific to RiverPark (Community Facilities District No. 5)	Park and Recreation Facilities	J	28.7	71.3	Fail	Majority
Ventura	Los Angeles	11/5/2024	Oxnard Community Facilities District No. 5	Special Tax	Parcel Tax: reduction of the maximum special taxes by half for Community Facilities District No. 5 (RiverPark)	Park and Recreation Facilities	K	34.0	66.1	Fail	Majority
Ventura	Los Angeles	11/5/2024	Oxnard Community Facilities District No. 5	Special Tax	Parcel Tax: impose limits on the uses of special taxes for Community Facilities District No. 5 (RiverPark)	Park and Recreation Facilities	L	32.3	67.8	Fail	Majority
Ventura	Los Angeles	11/5/2024	Santa Paula	General Tax	Sales Tax: enact a 1¢ sales tax providing approximately \$4,500,000 annually	General Government	R	60.0	40.0	Pass	Majority
Ventura	Los Angeles	11/5/2024	Oxnard Union High School District	GO Bond	\$285,000,000	K-12 School Facilities	E	56.8	43.2	Pass	55%
Ventura	Los Angeles	11/5/2024	Briggs Elementary School District	GO Bond	\$4,900,000	K-12 School Facilities	G	56.0	44.0	Pass	55%
Ventura	Los Angeles	11/5/2024	Ventura Unified School District	Special Tax	Parcel Tax: renew at the same rate of \$59 per parcel, for eight years, raising approximately \$2,500,000 annually	K-12 School Programs	H	66.5	33.5	Fail	Two-thirds
Ventura	Los Angeles	11/5/2024	Santa Paula Unified School District	GO Bond	\$28,400,000	K-12 School Facilities	M	52.0	48.0	Fail	55%
Ventura	Los Angeles	11/5/2024	Santa Paula Unified School District	GO Bond	\$36,000,000	K-12 School Facilities	N	52.6	47.4	Fail	55%
Yolo	Central Valley	11/5/2024	West Sacramento	General Tax	Sales Tax: enact a one cent transactions and use tax, providing approximately \$20,000,000 annually	General Government	O	53.3	46.7	Pass	Majority
Yolo / Sutter	Central Valley	11/5/2024	Woodland Joint Unified School District	GO Bond	\$160,000,000	K-12 School Facilities	P	49.2	50.8	Fail	55%



SUMMARY OF LOCAL GOVERNMENT BOND AND TAX MEASURES BY COUNTY, 2024 LOCAL AND GENERAL ELECTIONS

COUNTY	REGION	ELECTION DATE	AGENCY NAME	TYPE OF TAX/DEBT	AMOUNT OF BOND/TAX	PURPOSE	MEASURE	% YES	% NO	RESULT	THRESHOLD
Yolo	Central Valley	11/5/2024	Davis	General Tax	Sales Tax: establish an additional 1¢ sales tax, providing approximately \$11,000,000 annually	General Government	Q	64.2	35.8	Pass	Majority
Yolo	Central Valley	11/5/2024	Winters	General Tax	Sales Tax: establish a 1¢ sales tax, providing approximately \$1,200,000 annually	General Government	S	60.3	39.7	Pass	Majority
Yolo	Central Valley	11/5/2024	Davis Community Facilities District No. 1989-1	Special Tax	Parcel Tax: increase by \$49 per parcel (multifamily parcels would increase by \$24.50 per unit), increasing no more than 2% per year, raising approximately \$1,070,875 annually	Public Libraries Services	T	74.4	25.6	Pass	Two-thirds
Yolo	Central Valley	11/5/2024	Woodland	General Tax	Sales Tax: establish a one cent sales tax, providing approximately \$16,500,000 annually for 8 years	General Government	U	53.1	46.9	Pass	Majority
Yuba	Central Valley	11/5/2024	Wheatland Union High School District (SFID No. 2)	GO Bond	\$9,000,000	K-12 School Facilities	A	41.9	58.1	Fail	55%
Yuba	Central Valley	11/5/2024	Wheatland Union High School District (Plumas Lake SFID No.1)	GO Bond	\$19,700,000	K-12 School Facilities	B	44.3	55.7	Fail	55%
Yuba	Central Valley	11/5/2024	Wheatland Union High School District (Plumas Lake SFID No.1	GO Bond	\$20,300,000	K-12 School Facilities	C	40.2	59.9	Fail	55%
Yuba	Central Valley	11/5/2024	Plumas Lake Elementary School District	GO Bond	\$18,000,000	K-12 School Facilities	D	43.3	56.7	Fail	55%
Yuba	Central Valley	11/5/2024	Plumas Lake Elementary School District	GO Bond	\$18,000,000	K-12 School Facilities	E	44.2	55.8	Fail	55%
Yuba	Central Valley	11/5/2024	Plumas Lake Elementary School District	GO Bond	\$18,000,000	K-12 School Facilities	F	43.9	56.1	Fail	55%
Yuba	Central Valley	11/5/2024	Marysville	General Tax	Sales Tax: continue one-cent sales tax, providing an estimated \$3,900,000 a year	General Government	G	75.0	25.0	Pass	Majority



CALIFORNIA DEBT AND INVESTMENT  
ADVISORY COMMISSION

901 P Street, Room 142-A, Sacramento, CA 95814  
p 916.653.3269 • f 916.654.7440  
[cdiac@treasurer.ca.gov](mailto:cdiac@treasurer.ca.gov)  
[www.treasurer.ca.gov/cdiac](http://www.treasurer.ca.gov/cdiac)