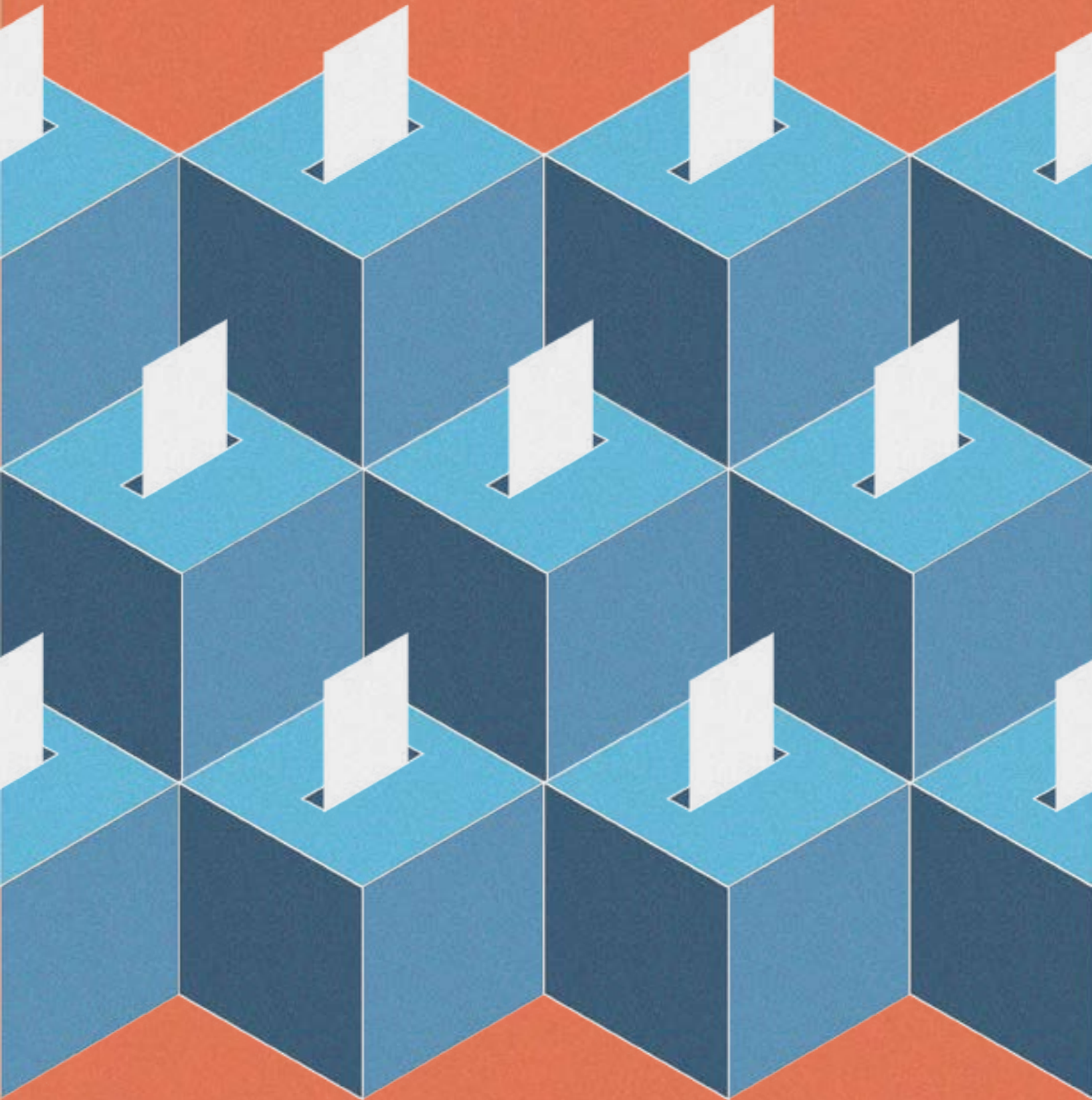


# Results of the 2024 Primary Elections

BOND AND TAX MEASURES APPEARING ON THE 2024 PRIMARY BALLOTS



# CALIFORNIA DEBT AND INVESTMENT ADVISORY COMMISSION

The California Debt and Investment Advisory Commission (CDIAC) provides information, education, and technical assistance on debt issuance and public fund investments to local public agencies and other public finance professionals. CDIAC was created to serve as the state's clearinghouse for public debt issuance information and to assist state and local agencies with the monitoring, issuance, and management of public debt.

## COMMISSION MEMBERS

FIONA MA, CPA  
California State Treasurer and Chair

GAVIN NEWSOM  
Governor

MALIA M. COHEN  
State Controller

DAVID ALVAREZ  
Assemblymember

AVELINO VALENCIA  
Assemblymember

SANDIE ARNOTT  
Treasurer-Tax Collector, County of San Mateo

NIKOLAI SKLAROFF  
Capital Finance Director  
San Francisco Public Utilities Commission

## EXECUTIVE DIRECTOR

ROBERT BERRY

Additional information concerning this report or CDIAC programs may be obtained by contacting CDIAC directly via phone (916) 653-3269, fax (916) 654-7440, e-mail ([cdiac@treasurer.ca.gov](mailto:cdiac@treasurer.ca.gov)) or by visiting CDIAC's website: [www.treasurer.ca.gov/cdiac](http://www.treasurer.ca.gov/cdiac).

All rights reserved. No part of the *Results of the 2024 Primary Elections: Bond and Tax Measures Appearing on the 2024 Primary Ballots* may be reproduced without written credit given to CDIAC. Permission to reprint with written credit given to CDIAC is hereby granted.

# CONTENTS

ACKNOWLEDGEMENT .....	1
INTRODUCTION.....	2
2024 PRIMARY ELECTION RESULTS .....	3
Summary .....	3
General Obligation Bond Measures .....	3
Tax Measures.....	4
Results by Region .....	5
COMPARISON OF THE 2022 AND 2024 PRIMARY ELECTIONS .....	7
Summary .....	7
FIGURES	
FIGURE 1 Measure Type and Threshold .....	2
FIGURE 2 Summary of Results for Fiscal Measures by Type, Results of the 2024 Primary Elections.....	3
FIGURE 3 GO Bond Measures by Number and Authorized Volume, Results of the 2024 Primary Elections .....	4
FIGURE 4 GO Bond Measures by Purpose, Results of the 2024 Primary Elections.....	4
FIGURE 5 Tax Measures, Results of the 2024 Primary Elections.....	4
FIGURE 6 Tax Measures by Purpose, Results of the 2024 Primary Elections.....	5
FIGURE 7 Counties Included in Region .....	5
FIGURE 8 Election Results by Region, Results of the 2024 Primary Elections.....	6

FIGURE 9 Election Results by Vote Requirement, 2022 and 2024 Primary Elections.....	7
FIGURE 10 Election Results by Type of Measure, 2022 and 2024 Primary Elections .....	8
FIGURE 11 Local Election Results by Region, 2022 and 2024 Primary Elections.....	8
FIGURE 12 Election Results by Purpose, 2022 and 2024 Primary Elections .....	9

## APPENDIX A

Summary of Statewide Fiscal Measures, 2024 Primary Elections .....	10
--	----

## APPENDIX B

Summary of Local Government Bond and Tax Measures by County, 2024 Primary Elections.....	12
--	----

# ACKNOWLEDGEMENT

Jean Shih of the Research and Policy Analysis Unit compiled the data and prepared the analysis. Tara Dunn and Angelica Hernandez reviewed and edited the report.

# INTRODUCTION

Constitutional and statutory provisions require voters to authorize general obligation (GO) bonds issued by state and local governments. For bonds issued by the State, the authorization must be made through a statewide election. Local bonds must be approved by voters within the jurisdiction authorizing the bond. State and local governments must also seek voter approval for levies of certain revenue exactions and taxes. For both state and local measures, the voter approval threshold depends on the type and purpose of the bond or tax (see Figure 1).

After each statewide election, the California Debt and Investment Advisory Commission (CDIAC) publishes a statistical summary and review of bond and tax measures appearing on state and local ballots. This report, the 42nd in the series, summarizes the results of bond and tax measures on the March 5, 2024, Primary Election ballot. This report also contains appendices that summarize statewide measures and local elections, by county.

**Figure 1**  
MEASURE TYPE AND THRESHOLD

BALLOT MEASURE	REQUIREMENT FOR PASSAGE
Local GO – Education (Prop. 39)	55 percent
Local GO – Education (Prop. 46)	Two-thirds
Local GO – Non-Education	Two-thirds
Local Special Tax / Bond	Two-thirds
Local General Tax	Majority
State Bond and Tax	Majority

# 2024 PRIMARY ELECTION RESULTS

**Figure 2**

SUMMARY OF RESULTS FOR FISCAL MEASURES BY TYPE  
RESULTS OF THE 2024 PRIMARY ELECTION

FISCAL MEASURE TYPE	TOTAL NUMBER	PASSED	PASSAGE RATE
General Tax	14	13	92.9 %
GO Bond <sup>1</sup>	43	27	62.8
Special Tax <sup>2</sup>	33	25	75.8
TOTAL	90	65	72.2%

<sup>1</sup> Includes one state GO bond measure that required majority approval and three local bond measures that required two-thirds voter approval.

<sup>2</sup> Includes five special tax measures, which required majority voter approval.

## SUMMARY

- **TOTAL MEASURES.** Voters considered one statewide measure and 89 local fiscal measures: 47 tax measures and 43 general obligation bond measures.
- **APPROVED MEASURES.** Of the 90 measures on the primary election ballots, voters approved 65 measures (72.2%). (Figure 2)
- **PASSAGE RATES.** In the primary election, general tax measures received the greatest support from voters with a 92.9% approval rate. (Figure 2)

## GENERAL OBLIGATION BOND MEASURES

- **SUPPORT FOR GO BOND MEASURES.** Voters approved 62.8% of these measures. (Figure 3)
- **VOLUME OF APPROVED MEASURES.** Voters approved approximately \$9.8 billion in GO bond measures. (Figure 3)
- **K-12 EDUCATIONAL FOCUS.** By purpose K-12 School Facilities represented 93% of all GO bond measures. (Figure 4)

**Figure 3**  
GO BOND MEASURES BY NUMBER AND  
AUTHORIZED VOLUME (IN MILLIONS)  
RESULTS OF THE 2024 PRIMARY ELECTION

RESULT	NUMBER	VOLUME	% OF GO BOND MEASURES (BY NUMBER)
Pass <sup>1</sup>	27	\$9,758	62.8%
Fail	16	960	37.2
TOTAL	43	\$10,718	100%

<sup>1</sup> Includes one state GO measure for \$6.38 billion for mental health, that required majority approval and three local bond measures that required two-thirds voter approval.

- STRONG SUPPORT FOR GO BONDS FOR HOSPITAL/HEALTH CARE, AFFORDABLE HOUSING, AND MENTAL HEALTH. Voters approved 100% of GO bond measures for Hospital/Health Care Facilities, Affordable Housing,

and Mental Health, which all had one measure each. (Figure 4)

- SUPPORT FOR K-12 SCHOOL FACILITIES GO BONDS. Voters approved 60% (approximately \$2.96 billion) of the GO bond measures for K-12 School Facilities. (Figure 4)

## TAX MEASURES

- GOOD SUPPORT FOR TAX MEASURES. For the primary election, voters approved 80.9% of general and special tax measures. (Figure 5)
- STRONG SUPPORT IN PRIMARY ELECTION FOR GENERAL TAX MEASURES. General tax measures had a passage rate of 92.9% for the primary election. (Figure 5)
- MAJORITY VS. TWO-THIRDS VOTING REQUIREMENT. General tax measures only need a major-

**Figure 4**  
GO BOND MEASURES BY PURPOSE, RESULTS OF THE 2024 PRIMARY ELECTION

PURPOSE	TOTAL NUMBER OF PROPOSED MEASURES	PERCENT OF MEASURES	NUMBER OF PASSED MEASURES	PASSAGE RATE
K-12 School Facilities	40	93%	24	60%
Hospital/Health Care Facilities	1	2.3	1	100
Affordable Housing	1	2.3	1	100
Mental Health	1	2.3	1	100
TOTAL	43	100%	27	62.8%

<sup>1</sup> Each purpose category includes one local bond measure that required two-thirds voter approval, except Affordable Housing, which includes one statewide bond measure that required majority voter approval.

**Figure 5**  
TAX MEASURES, RESULTS OF THE 2024 PRIMARY ELECTION

TYPE OF TAX	TOTAL NUMBER	PERCENT OF MEASURES	PASSED	PASSAGE RATE
General Tax	14	29.8%	13	92.9%
Special Tax	33	70.2	25	75.8
TOTAL	47	100%	38	80.9%



**Figure 6****TAX MEASURES BY PURPOSE, RESULTS OF THE 2024 PRIMARY ELECTION**

PURPOSE	TOTAL NUMBER	PERCENT OF MEASURES	PASSED	PASSAGE RATE
Capital Improvements	3	6.4%	3	100%
Education	12	25.5	10	83.3
General Government	12	25.5	12	100
Miscellaneous	5	10.6	2	40
Public Health and Safety	15	31.9	11	73.3
TOTAL	47	100%	38	80.9%

**Figure 7****COUNTIES INCLUDED IN REGION**

<b>BAY AREA</b>	Alameda, Contra Costa, Marin, Napa, San Francisco, San Mateo, Santa Clara, Solano, and Sonoma Counties.
<b>CENTRAL VALLEY</b>	Butte, Colusa, El Dorado, Fresno, Glenn, Kern, Kings, Madera, Merced, Placer, Sacramento, San Joaquin, Shasta, Sutter, Stanislaus, Tehama, Tulare, Yolo, and Yuba Counties.
<b>LOS ANGELES</b>	Los Angeles, Orange, and Ventura Counties.
<b>SAN DIEGO/ INLAND EMPIRE</b>	Imperial, San Diego, Riverside, and San Bernardino Counties.
<b>OTHER</b>	Alpine, Amador, Calaveras, Del Norte, Humboldt, Inyo, Lake, Lassen, Mariposa, Mendocino, Modoc, Mono, Monterey, Nevada, Plumas, San Benito, San Luis Obispo, Santa Barbara, Santa Cruz, Sierra, Siskiyou, Trinity, and Tuolumne Counties. Also includes measures that overlap multiple county boundaries.

ity of the vote to pass. If these measures had a two-thirds voting requirement, only 14.3% (2 of 14) would have passed. In contrast, special tax measures (33), require two-thirds voter approval. These measures had good support with a 75.8% passage rate. If these measures only required a majority vote, 87.9% of the measures (29 of 33) would have passed. (Figure 5)

- **TAX MEASURES BY PURPOSE.** A majority of the tax measures appearing on the primary ballots were special taxes for public health and safety. Education and general government were tied for the second highest. The remaining measures were for capital improvements and miscellaneous. Miscellaneous purposes include transportation services, affordable housing, disposal of abandoned vehicles, and various city services. (Figure 6)

**RESULTS BY REGION**

The election results are divided into five regions: Bay Area, Central Valley, Los Angeles, San Diego/ Inland Empire, and Other. (Figure 7)

- **APPROVED MEASURES.** Bay Area region voters were presented with the most measures (32). Voters in multiple regions were presented with the lowest number of measures (one).

## Figure 8

### ELECTION RESULTS BY REGION RESULTS OF THE 2024 PRIMARY ELECTION

REGION	TOTAL PROPOSED	PASSED	PASSAGE RATE
Bay Area	32	29	90.6%
Central Valley	15	4	26.7
Los Angeles	12	9	75
San Diego/ Inland Empire	7	4	57.1
Other	22	17	77.3
Multiple <sup>1</sup>	1	1	100
TOTAL	89	64	71.9%

<sup>1</sup> Multiple includes regions with measures that overlap multiple county boundaries.

- **PASSAGE RATES.** Multiple region had the highest passage rate (100%) with only one measure. The Bay Area region had the second highest passage rate for GO bond and tax measures (90.6%). Measures in the Central Valley region had the lowest passage rate (26.7%).

Figure 8 shows the number and percentage of measures that were approved by region.

# COMPARISON OF THE 2022 AND 2024 PRIMARY ELECTIONS

- **COMPARATIVE PASSAGE RATES.**<sup>1</sup> The passage rate of bond and tax measures during the 2024 Primary Election was slightly higher (72.2%), than the 2022 Primary Election<sup>1</sup> (70.6%). (Figure 9)
- **COMPARATIVE NUMBER OF APPROVED MEASURES.** While the number of approved measures in 2024 (65), was higher than 2022 (48), there were also more measures in 2024 that resulted in just a slightly higher overall voter approval rate. (Figure 9)
- **GENERAL TAX MEASURE PASSAGE RATES.** The passage rate for general tax measures greatly increased in 2024 (92.9%) compared to 2022 (50%). (Figure 10)

Figure 9 provides a summary of the passage requirements for the bond and tax measures appearing on the 2022 Primary Election and the 2024 Primary Election ballots.

**Figure 9**

ELECTION RESULTS BY VOTE REQUIREMENT, 2022 AND 2024 PRIMARY ELECTIONS

VOTE REQUIREMENT	2022 TOTAL PROPOSED	2022 PASSED	2022 PASSAGE RATE	2024 TOTAL PROPOSED	2024 PASSED	2024 PASSAGE RATE
Majority	13	8	61.5%	20	17	85%
55%	19	15	78.9	39	23	59
Two-thirds	36	25	69.4	31	25	80.6
TOTAL	68	48	70.6%	90	65	72.2%

<sup>1</sup> The 2022 Primary Election only includes data from the election held on June 7, 2022, it does not include local elections held on 4/12/2022 and 5/3/2022.

Figure 10 provides a summary of the types of bond and tax measures on the Primary Election ballots.

**Figure 10**

**ELECTION RESULTS BY TYPE OF MEASURE, 2022 AND 2024 PRIMARY ELECTIONS**

MEASURE TYPE	2022 TOTAL PROPOSED	2022 PASSED	2022 PASSAGE RATE	2024 TOTAL PROPOSED	2024 PASSED	2024 PASSAGE RATE
STATE GO Bond	0	0	N/A	1	1	100%
LOCAL GO Bond	24	16	66.7%	42	26	61.9%
LOCAL General Tax	10	5	50	14	13	92.9
LOCAL Special Tax	34	27	79.4	33	25	75.8
TOTAL	68	48	70.6%	90	65	72.2%

<sup>1</sup> Includes three local bond measures in 2024 that required two-thirds voter approval.

<sup>2</sup> Includes three special tax measures in 2022 that required majority voter approval instead of two-thirds. Includes five special tax measures in 2024 which required majority voter approval.

Figure 11 provides a summary of votes by region on the Primary Election ballots.

**Figure 11**

**ELECTION RESULTS BY REGION, 2022 AND 2024 PRIMARY ELECTIONS**

REGION	2022 TOTAL PROPOSED	2022 PASSED	2022 PASSAGE RATE	2024 TOTAL PROPOSED	2024 PASSED	2024 PASSAGE RATE
Bay Area	29	26	89.7%	32	29	90.6%
Central Valley	13	7	53.8	15	4	26.7
Los Angeles	7	2	28.6	12	9	75
San Diego/Inland Empire	5	3	60	7	4	57.1
Other	12	9	75	22	17	77.3
Multiple <sup>2</sup>	2	1	50	1	1	100
TOTAL	68	48	70.6%	89	64	71.9%

<sup>1</sup> Total does not include the one state measure on the ballot in 2024.

<sup>2</sup> Multiple includes regions with measures that overlap multiple county boundaries.

- **GO BOND MEASURE PASSAGE RATES.** The passage rate for GO bond measures was slightly lower in 2024 (61.9%) compared to 2022 (66.7%). (Figure 10)
- **REGIONAL PASSAGE RATES.** In 2024, Multiple and Bay Area regions had the highest passage rate at 100% and 90.6%, respectively. In 2022, the Bay Area region had the highest passage rate at 89.7%. (Figure 11)
- **PASSAGE RATES BY PURPOSE.** Both general government and capital improvements had the highest passage rates, 100%, in the 2024 Primary Election. In 2022, the passage rates for miscellaneous and education were the highest at 90% and 75.9%, respectively. (Figure 12)
- **COMPARATIVE NUMBER OF PROPOSED LOCAL MEASURES.** In both Primary Elections, education had the highest number of measures,

Figure 12 summarizes the types of projects appearing on the Primary Election ballots.

**Figure 12**

**ELECTION RESULTS BY PURPOSE, 2022 AND 2024 PRIMARY ELECTIONS**

PURPOSE	2022 TOTAL PROPOSED	2022 PASSED	2022 PASSAGE RATE	2024 TOTAL PROPOSED	2024 PASSED	2024 PASSAGE RATE
Education	29	22	75.9%	52	34	65.4%
General Government	8	5	62.5	12	12	100
Capital Improvements	6	2	33.3	3	3	100
Public Health and Safety	15	10	66.7	17	13	76.5
Miscellaneous <sup>1</sup>	10	9	90	6	3	50
TOTAL	68	48	70.6%	90	65	72.2%

<sup>1</sup> In 2022, this category includes public libraries, park and recreation facilities, disposal of abandoned vehicle, zoo maintenance, and various city services. In 2024, this category includes transportation services, affordable housing, disposal of abandoned vehicles, and various city services.

with 29 or 42.6% of all measures in 2022 and 52 or 57.8% of all measures in 2024. (Figure 12)

- **GENERAL GOVERNMENT MEASURE PASSAGE RATES.** General government measures had a significantly higher passage rate of 100% in 2024 compared to 62.5% in 2022. (Figure 12)
- **CAPITAL IMPROVEMENT MEASURE PASSAGE RATES.** Capital Improvement measures also had a significantly higher passage rate of 100% in 2024 compared to 33.3% in 2022. (Figure 12)

## SUMMARY

Voters generally supported bond and tax measures in both the 2024 and 2022 Primary Elections with approval rates of 72.2% and 70.6%, respectively.

The overall number of ballot measures increased 32.4% in the 2024 Primary Election (90) compared to the 2022 Primary Election (68). In both elections, education measures comprised the majority of the ballot measures: 42.6% in 2022 and 57.8% in 2024. When comparing passage rates for education measures, 2022 had a higher passage rate (75.9%) compared to 2024 (65.4%). Additionally, general government and capital improvements experienced significant increases in voter support in the 2024 Primary Election. Public health and safety increased moderately; however, the passage rate for miscellaneous dropped significantly in the 2024 Primary Election. Both the 2022 and 2024 Primary Elections had one cannabis measure; however voters approved the cannabis measure in 2024, while the measure failed in 2022.

# APPENDIX A

## SUMMARY OF STATEWIDE FISCAL MEASURES

SUMMARY OF STATEWIDE FISCAL MEASURES, 2024 PRIMARY ELECTION, MARCH 5, 2024

DESCRIPTION	PURPOSE	PROPOSITION	% YES	% NO	RESULT
GO Bond - \$6,380,000,000	Authorizes \$6,380,000,000 in bonds to build mental health treatment facilities for those with mental health and substance use challenges; provides housing for the homeless. Legislative Statute.	I	50.2	49.8	Pass

# APPENDIX B

## SUMMARY OF LOCAL GOVERNMENT BOND AND TAX MEASURES BY COUNTY



# SUMMARY OF LOCAL GOVERNMENT BOND AND TAX MEASURES BY COUNTY, 2024 PRIMARY ELECTION

COUNTY	REGION	AGENCY	TYPE OF TAX/DEBT	AMOUNT OF BOND/TAX	PURPOSE	MEASURE	% YES	% NO	RESULT	THRESHOLD	ELECTION DATE
Alameda	Bay Area	Alameda Unified School District	Special Tax	Parcel Tax: \$0.585 per building square foot capped at \$15,998 per year per parcel, and \$598 per unimproved parcel, for nine years, raising approximately \$24,000,000 annually	K-12 School Programs	E	76.15	23.85	Pass	Two-thirds	3/5/2024
Alameda	Bay Area	Piedmont	Special Tax	Parcel Tax: renew for 12 years with initial rates between \$743 and \$1,254 per parcel for single family residences, \$1,254 to \$1,882 per developed commercial parcel, \$515 per dwelling unit for multi-family residences, or \$761 per parcel for parcels divided by tax code area line, raising approximately \$3,272,000 annually	Various City Services	F	75.65	24.35	Pass	Two-thirds	3/5/2024
Alameda	Bay Area	Albany Unified School District	Special Tax	Parcel Tax: renew at \$0.55 per building square foot on improved parcels, and \$25 per unimproved parcel, increasing annually by 3%, resulting in approximately \$4,800,000 annually	K-12 School Programs	G	78.86	21.14	Pass	Two-thirds	3/5/2024
Alameda	Bay Area	Berkeley Unified School District	Special Tax	Parcel Tax: renew at \$0.54 per building square foot or \$25 per unimproved parcels beginning July 1, 2025 for a period of 8 years, generating approximately \$44,000,000 annually	K-12 School Programs	H	88.26	11.74	Pass	Two-thirds	3/5/2024
Alameda	Bay Area	Hayward Unified School District	GO Bond	\$550,000,000	K-12 School Facilities	I	64.53	35.47	Pass	55%	3/5/2024
Alameda	Bay Area	San Leandro Unified School District	GO Bond	\$174,000,000	K-12 School Facilities	J	63.09	36.91	Pass	55%	3/5/2024
Amador	Other	Amador City	Special Tax	Sales Tax: increase by 0.25%, raising the sales tax from 7.75% to 8%, for 10 years	Transportation	K	85.56	14.44	Pass	Two-thirds	3/5/2024

# SUMMARY OF LOCAL GOVERNMENT BOND AND TAX MEASURES BY COUNTY, 2024 PRIMARY ELECTION

Butte / Yuba	Central Valley	Marysville Joint Unified School District	GO Bond	\$97,000,000	K-12 School Facilities	S	37.25	62.75	Fail	55%	3/5/2024
Calaveras	Other	Calaveras County	Special Tax	Sales Tax: 1%, generating approximately \$5,000,000 annually	Fire Protection	A	55.04	44.96	Pass	Majority	3/5/2024
Calaveras	Other	Calaveras County	Special Tax	Abandoned Vehicle Abatement Fee: renew annual fee of \$1 for every vehicle registered in the county and add an additional \$2 charge for certain commercial vehicles, for 10 years	Removal/Disposal of Abandoned/Wrecked Vehicles	B	62.29	37.71	Fail	Two-thirds	3/5/2024
Contra Costa	Bay Area	Antioch Unified School District	GO Bond	\$195,000,000	K-12 School Facilities	B	57.85	42.15	Pass	55%	3/5/2024
Contra Costa	Bay Area	Martinez Unified School District	Special Tax	Parcel Tax: renew at \$75 per year, raising an estimated \$850,000 annually	K-12 School Programs	C	74.94	25.06	Pass	Two-thirds	3/5/2024
Contra Costa	Bay Area	Moraga School District	GO Bond	\$52,000,000	K-12 School Facilities	D	67.45	32.55	Pass	55%	3/5/2024
Fresno	Central Valley	Fresno County	Special Tax	Sales Tax: 0.25% transaction and use tax, generating \$63,000,000 annually for 25 years	College Facilities	E	42.74	57.26	Fail	Majority	3/5/2024
Fresno	Central Valley	Orange Cove	Special Tax	Parcel Tax: renew at \$95 per single family residential parcel within the city; \$65 per multifamily unit within the city; \$95 per agricultural parcel; \$495 per commercial parcel; and \$750 per industrial parcel, generating approximately \$263,965 annually	Fire Protection/Police Services	O	66.42	33.58	Fail	Two-thirds	3/5/2024
Fresno	Central Valley	Fowler Unified School District	GO Bond	\$44,000,000	K-12 School Facilities	G	63.75	36.25	Pass	55%	3/5/2024
Humboldt	Other	Arcata School District	GO Bond	\$12,500,000	K-12 School Facilities	B	75.45	24.55	Pass	55%	3/5/2024
Humboldt	Other	Fieldbrook Glendale Community Services District Zone Two	Special Tax	Parcel Tax: renew and increase from \$75.00 to \$95.00 per assessor's parcel per year	Fire Protection/Emergency Medical Services	C	86.47	13.53	Pass	Two-thirds	3/5/2024

# SUMMARY OF LOCAL GOVERNMENT BOND AND TAX MEASURES BY COUNTY, 2024 PRIMARY ELECTION

Kern	Central Valley	California City	Special Tax	Parcel Tax: annual amount not to exceed \$146, for 5 years, generating approximately \$5,200,000 annually	Various City Services	A	44.27	55.73	Fail	Two-thirds	3/5/2024
Lake	Other	Kelseyville Unified School District	GO Bond	\$35,500,000	K-12 School Facilities	Q	49.86	50.14	Fail	55%	3/5/2024
Los Angeles	Los Angeles	Bell	General Tax	Sales Tax: three-quarter cent per dollar (0.75%) transaction and use tax, providing an estimated \$1,500,000 annually	Public Safety/Recreation/General Government	I	46.92	53.08	Fail	Majority	3/5/2024
Los Angeles	Los Angeles	Culver City Unified School District	GO Bond	\$358,000,000	K-12 School Facilities	E	61.95	38.05	Pass	55%	3/5/2024
Los Angeles	Los Angeles	Garvey School District	GO Bond	\$60,000,000	K-12 School Facilities	G	61.75	38.25	Pass	55%	3/5/2024
Los Angeles	Los Angeles	La Canada Flintridge	General Tax	Sales Tax: <del>¾</del> sales tax providing approximately \$2,625,000 annually	Fire Protection/Police Services/General Government	LCF	59.01	40.99	Pass	Majority	3/5/2024
Los Angeles	Los Angeles	Manhattan Beach Unified School District	Special Tax	Parcel Tax: renew at \$225, for 6 years, providing approximately \$2,500,000 annually	K-12 School Programs	MB	67.74	32.26	Pass	Two-thirds	3/5/2024
Los Angeles	Los Angeles	Pomona	General Tax	Sales Tax: renew the 0.75% transaction and use tax, providing approximately \$16,800,000 annually	General Government	P	60.09	39.91	Pass	Majority	3/5/2024
Los Angeles	Los Angeles	Pomona	General Tax	Sales Tax: reduce the transaction and use tax from 0.75% to 0.50%, and extending the term beyond March 31, 2029, resulting in a reduction of approximately \$5,800,000 annually	General Government	X	54.79	45.21	Pass	Majority	3/5/2024
Los Angeles	Los Angeles	South Whittier School District	GO Bond	\$37,500,000	K-12 School Facilities	K	58.45	41.55	Pass	55%	3/5/2024
Marin	Bay Area	Tamalpais Union High School District	GO Bond	\$517,000,000	K-12 School Facilities	A	53.76	46.24	Fail	55%	3/5/2024

# SUMMARY OF LOCAL GOVERNMENT BOND AND TAX MEASURES BY COUNTY, 2024 PRIMARY ELECTION

Marin / Sonoma	Bay Area	Petaluma Joint Union High School District	Special Tax	Parcel Tax: \$89 per year per parcel, at a fixed rate for 8 years, raising approximately \$2,200,000 annually	K-12 School Programs	B	63.4	36.6	Fail	Two-thirds	3/5/2024
Marin	Bay Area	Belvedere	Special Tax	Levy: continue adjusting its appropriation limit for the period of 07/01/2024 through 6/30/2028. 2023-2024 fiscal year is \$994 per residential dwelling unit, \$1,131 per occupancy in commercial structures, and \$199 per vacant parcel.	Fire Protection/Police Services/Emergency Medical Services	C	78.05	21.95	Pass	Majority	3/5/2024
Marin	Bay Area	Ross	Special Tax	Parcel Tax: an ordinance reauthorizing from July 1, 2025 through June 30, 2035, at a rate of \$1,201.50 per dwelling unit for single family residences and \$1,201.50 per parcel for all other uses, providing about \$1,000,000 annually	Public Safety	E	78.15	21.85	Pass	Two-thirds	3/5/2024
Marin	Bay Area	Bel Marin Keys Community Service District	Special Tax	Parcel Tax: initial annual rate of \$1,800 (\$150/month) per taxable parcel, (generating \$1,263,600 in tax year 2024-25), increasing 2.5% annually thereafter	Infrastructure Maintenance and Flood Control	G	79.64	20.36	Pass	Two-thirds	3/5/2024
Mendocino	Other	Mendocino County	Special Tax	Abandoned Vehicle Abatement Fee: renew at \$1 per vehicle and an additional \$2 for certain commercial vehicles, for 10 years	Transportation Services	R	91.67	8.33	Pass	Two-thirds	3/5/2024
Merced	Central Valley	Merced	Special Tax	Sales Tax: 0.5%, raising about \$8,000,000 annually	Fire Protection/Police Services	C	68.52	31.48	Pass	Two-thirds	3/5/2024
Merced	Central Valley	Delhi Unified School District	GO Bond	\$17,000,000	K-12 School Facilities	E	50.04	49.96	Fail	55%	3/5/2024
Mono	Other	Mammoth Unified School District	GO Bond	\$70,000,000	K-12 School Facilities	I	53.1	46.9	Fail	55%	3/5/2024
Monterey	Other	Chualar Union School District	GO Bond	\$5,600,000	K-12 School Facilities	O	48.85	51.15	Fail	55%	3/5/2024

# SUMMARY OF LOCAL GOVERNMENT BOND AND TAX MEASURES BY COUNTY, 2024 PRIMARY ELECTION

Monterey / Santa Cruz	Other	Pajaro Valley Health Care District	GO Bond	\$116,000,000	Hospital/Health Care Facilities	N	68.26	31.74	Pass	Two-thirds	3/5/2024
Napa	Bay Area	Howell Mountain Elementary School District	GO Bond	\$9,000,000	K-12 School Facilities	D	50.47	49.53	Fail	55%	3/5/2024
Nevada	Other	Twin Ridges Elementary School District	GO Bond	\$2,600,000	K-12 School Facilities	A	72.09	27.91	Pass	55%	3/5/2024
Nevada	Other	Grass Valley	General Tax	Sales Tax: 0.375% transaction and use tax, raising about \$3,400,000 annually, for 7 years	General Government	B	50.24	49.76	Pass	Majority	3/5/2024
Nevada	Other	Nevada City	Special Tax	Sales Tax: 0.5% transaction and use tax, raising approximately \$900,000 annually, for 5 years	Fire Services	C	69.2	30.8	Pass	Two-thirds	3/5/2024
Orange	Los Angeles	Westminster	General Tax	Sales Tax: 0.5% transaction and use tax, providing an estimated \$8,000,000 annually	General Government	E	61.61	38.39	Pass	Majority	3/5/2024
Plumas	Other	Plumas County	Special Tax	Sales Tax: 3/4% transaction and use tax	Police Services	A	59.5	40.5	Fail	Two-thirds	3/5/2024
Riverside	San Diego/Inland Empire	Desert Sands Unified School District	GO Bond	\$675,000,000	K-12 School Facilities	A	57.83	42.17	Pass	55%	3/5/2024
Riverside	San Diego/Inland Empire	Riverside	General Tax	Cannabis Tax: maximum rate of 10% of the gross receipts of each business, potentially generating \$2,000,000 annually	General Government	B	61.47	38.53	Pass	Majority	3/5/2024
Sacramento	Central Valley	Sacramento	General Tax	Business Operations Tax: increase the gross receipts taxable threshold to \$100,000, setting new flat tax rates for professionals (\$684), setting new flat tax rates for nonexempt residential rentals, hotels, and short-term rentals (\$114, plus 2.85/unit above thresholds), and setting new maximum annual tax liability, all with yearly cost-of-living adjustments for an estimated annual increase of \$6,000,000	General Government	C	61.53	38.47	Pass	Majority	3/5/2024

# SUMMARY OF LOCAL GOVERNMENT BOND AND TAX MEASURES BY COUNTY, 2024 PRIMARY ELECTION

San Bernardino	San Diego/Inland Empire	Adelanto	Special Tax	Vacant Property Tax: an annual parcel tax on vacant land with rates based on zoning ranging from \$50.00 to \$600.00 per acre for 20 years raising approximately \$6,200,000 per year	Various City Services	U	34.97	65.03	Fail	Two-thirds	3/5/2024
San Bernardino	San Diego/Inland Empire	Chino	General Tax	Sales Tax: \$0.01 transaction and use tax	General Government	V	60.17	39.83	Pass	Majority	3/5/2024
San Bernardino	San Diego/Inland Empire	San Bernardino County Fire Protection District Service (Zone FP-5)	Special Tax	Parcel Tax: repeal the special parcel tax of \$171.85 per parcel with future annual inflationary increases of up to 3%, resulting in a reduction of revenue estimated of \$46,500,000 annually	Fire Services/Emergency Medical Services	W	43.54	56.46	Fail	Majority	3/5/2024
San Diego	San Diego/Inland Empire	Mountain Empire Unified School District	GO Bond	\$20,000,000	K-12 School Facilities	B	48.68	51.32	Fail	55%	3/5/2024
San Diego	San Diego/Inland Empire	Rincon Ranch Community Services District	Special Tax	Parcel Tax: authorizes district to establish and levy a Special Tax Override, with the tax not to exceed \$10 per acre or portion thereof, plus \$250 per parcel of land per year	Road Improvements	C	66.67	33.33	Pass	Two-thirds	3/5/2024
San Francisco	Bay Area	San Francisco	GO Bond	\$300,000,000	Affordable Housing	A	70.38	29.62	Pass	Two-thirds	3/5/2024
San Francisco	Bay Area	San Francisco	General Tax	Real Estate Transfer Tax: exempt from the real estate transfer tax the first time a property is transferred after being converted from a commercial to residential use, have authority to amend the transfer tax without voter approval but not to increase it, and increase the annual limit on office space available for development by including office space that has been converted to a different use or demolished	General Government	C	52.78	47.22	Pass	Majority	3/5/2024
San Mateo	Bay Area	Jefferson Elementary School District	Special Tax	Parcel Tax: annual \$88 per parcel, raising \$1,640,000 annually for 9 years	K-12 School Programs	C	69.83	30.17	Pass	Two-thirds	3/5/2024

# SUMMARY OF LOCAL GOVERNMENT BOND AND TAX MEASURES BY COUNTY, 2024 PRIMARY ELECTION

San Mateo	Bay Area	Woodside Elementary School District	GO Bond	\$36,000,000	K-12 School Facilities	E	65.37	34.63	Pass	55%	3/5/2024
San Mateo	Bay Area	Pacifica School District	GO Bond	\$70,000,000	K-12 School Facilities	G	61.2	38.8	Pass	55%	3/5/2024
San Mateo	Bay Area	San Carlos School District	GO Bond	\$176,000,000	K-12 School Facilities	H	63.22	36.78	Pass	55%	3/5/2024
San Mateo	Bay Area	San Mateo County Services Area No. 1	Special Tax	Parcel Tax: a maximum of \$65 per parcel, for four years, raising approximately \$90,000 per year	Fire Protection/Police Services	B	87.8	12.2	Pass	Two-thirds	3/5/2024
Santa Clara	Bay Area	Sunnyvale School District	GO Bond	\$214,000,000	K-12 School Facilities	C	70.01	29.99	Pass	Two-thirds	3/5/2024
Santa Cruz	Other	Happy Valley Elementary School District	Special Tax	Parcel Tax: renew the existing parcel tax of \$99 per parcel for 8 years, generating approximately \$61,000 annually	K-12 School Programs	G	83.97	16.03	Pass	Two-thirds	3/5/2024
Santa Cruz	Other	Live Oak Elementary School District	GO Bond	\$44,000,000	K-12 School Facilities	H	64.63	35.37	Pass	55%	3/5/2024
Santa Cruz	Other	Pacific Elementary School District	GO Bond	\$1,300,000	K-12 School Facilities	I	61.26	38.74	Pass	55%	3/5/2024
Santa Cruz	Other	Pacific Elementary School District	GO Bond	\$675,000	K-12 School Facilities	J	67.71	32.29	Pass	55%	3/5/2024
Santa Cruz	Other	Santa Cruz County	General Tax	Sales Tax: raise the existing transaction and use tax by 0.5%, increasing the sales tax rate from 9% to 9.5%	General Government	K	54.61	45.39	Pass	Majority	3/5/2024
Santa Cruz	Other	Santa Cruz	General Tax	Sales Tax: additional 0.5% transaction and use tax, increasing the sales tax from 9.25% to 9.75%	General Government	L	61.78	38.22	Pass	Majority	3/5/2024
Sierra	Other	Downieville Fire Protection District	Special Tax	Parcel Tax: \$60 per improved parcel per fiscal year, raising approximately \$18,000 annually	Fire Services/Emergency Medical Services	A	86.93	13.07	Pass	Two-thirds	3/5/2024

# SUMMARY OF LOCAL GOVERNMENT BOND AND TAX MEASURES BY COUNTY, 2024 PRIMARY ELECTION

Sierra	Other	Sierra City Fire District	Special Tax	Parcel Tax: \$60 per improved parcel per fiscal year, raising approximately \$28,000 annually	Fire Services/Emergency Medical Services	B	92.41	7.59	Pass	Two-thirds	3/5/2024
Solano	Bay Area	Benicia	General Tax	Transient Occupancy Tax: increase from 9% to 13%, for 12 years, providing approximately \$250,000 annually	General Government	A	77.63	22.37	Pass	Majority	3/5/2024
Solano	Bay Area	Benicia	General Tax	Sales Tax: additional 0.75% transaction and use tax, increasing the total sales tax from 8.375% to 9.125%, for 12 years, providing approximately \$5,400,000 annually	General Government	B	72.17	27.83	Pass	Majority	3/5/2024
Solano	Bay Area	Benicia Unified School District	GO Bond	\$122,500,000	K-12 School Facilities	C	62.46	37.54	Pass	55%	3/5/2024
Solano / Yolo	Bay Area / Central Valley	Davis Joint Unified School District	Special Tax	Parcel Tax: renew at \$768 per parcel, indefinitely, raising approximately \$11,700,000 annually	K-12 School Programs	N	68.22	31.78	Pass	Two-thirds	3/5/2024
Sonoma	Bay Area	Cotati-Rohnert Park Unified School District	Special Tax	Parcel Tax: renew at \$89 per parcel per year, at a fixed rate for 8 years, raising approximately \$1,300,000 annually	K-12 School Programs	A	75.02	24.98	Pass	Two-thirds	3/5/2024
Sonoma	Bay Area	Fort Ross Elementary School District	GO Bond	\$2,100,000	K-12 School Facilities	C	55.59	44.41	Pass	55%	3/5/2024
Sonoma	Bay Area	Harmony Union School District	GO Bond	\$13,500,000	K-12 School Facilities	D	56.57	43.43	Pass	55%	3/5/2024
Sonoma	Bay Area	Petaluma City Elementary School District	Special Tax	Parcel Tax: \$89 per parcel per year, fixed for 8 years, raising approximately \$1,400,000 annually	K-12 School Programs	E	68.46	31.54	Pass	Two-thirds	3/5/2024
Sonoma	Bay Area	Rincon Valley Union School District	GO Bond	\$65,600,000	K-12 School Facilities	G	59.46	40.54	Pass	55%	3/5/2024



# SUMMARY OF LOCAL GOVERNMENT BOND AND TAX MEASURES BY COUNTY, 2024 PRIMARY ELECTION

Sonoma	Bay Area	Sonoma County	Special Tax	Sales Tax: 0.5% transaction and use tax, providing approximately \$60,000,000 annually	Fire Services/Emergency Medical Services	H	61.71	38.29	Pass	Majority	3/5/2024
Stanislaus	Central Valley	Riverbank Unified School District	GO Bond	\$2,100,000	K-12 School Facilities	N	57.35	42.65	Pass	55%	3/5/2024
Sutter	Central Valley	Sutter Union High School District	GO Bond	\$13,800,000	K-12 School Facilities	B	53.27	46.73	Fail	55%	3/5/2024
Ventura	Los Angeles	Santa Paula Unified School District	GO Bond	\$55,900,000	K-12 School Facilities	A	50.63	49.37	Fail	55%	3/5/2024
Ventura	Los Angeles	Santa Paula Unified School District	GO Bond	\$36,000,000	K-12 School Facilities	B	51.68	48.32	Fail	55%	3/5/2024
Ventura	Los Angeles	Hueneme Elementary School District	GO Bond	\$53,700,000	K-12 School Facilities	C	66.33	33.67	Pass	55%	3/5/2024
Yuba	Central Valley	Wheatland Union High School District	GO Bond	\$20,000,000	K-12 School Facilities	T	54.65	45.35	Fail	55%	3/5/2024
Yuba	Central Valley	Wheatland Union High School District	GO Bond	\$8,700,000	K-12 School Facilities	U	42.52	57.48	Fail	55%	3/5/2024
Yuba	Central Valley	Plumas Lake Elementary School District	GO Bond	\$18,000,000	K-12 School Facilities	V	53.85	46.15	Fail	55%	3/5/2024
Yuba	Central Valley	Plumas Lake Elementary School District	GO Bond	\$18,000,000	K-12 School Facilities	W	54.14	45.86	Fail	55%	3/5/2024
Yuba	Central Valley	Plumas Lake Elementary School District	GO Bond	\$18,000,000	K-12 School Facilities	X	53.17	46.83	Fail	55%	3/5/2024



CALIFORNIA DEBT AND INVESTMENT  
ADVISORY COMMISSION

901 P Street, Room 142-A, Sacramento, CA 95814  
p 916.653.3269 • f 916.654.7440  
[cdiac@treasurer.ca.gov](mailto:cdiac@treasurer.ca.gov)  
[www.treasurer.ca.gov/cdiac](http://www.treasurer.ca.gov/cdiac)