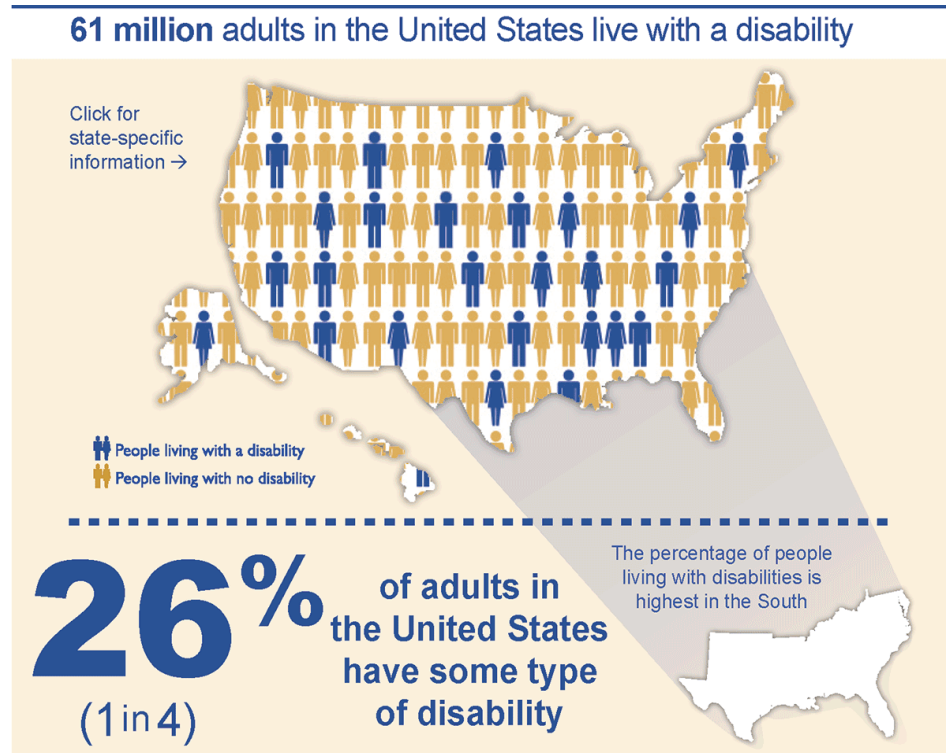


There are a growing number of individuals with physical, intellectual and developmental disabilities of all ages

Individuals with intellectual, developmental and aging disabilities vary in personal independence and dependence

It is estimated that...



People with disabilities have the same general health care needs as others

But they are:

**2x** more likely to find health care providers' skills and facilities **inadequate**

**3x** more likely to be **denied** health care

**4x** more likely to be treated **badly** in the health care system



## Disability and COMMUNITIES



Disability is especially common in these groups:

**2 in 5** adults age 65 years and older have a disability



**1 in 4** women have a disability



**2 in 5** Non-Hispanic American Indians/ Alaska Natives have a disability

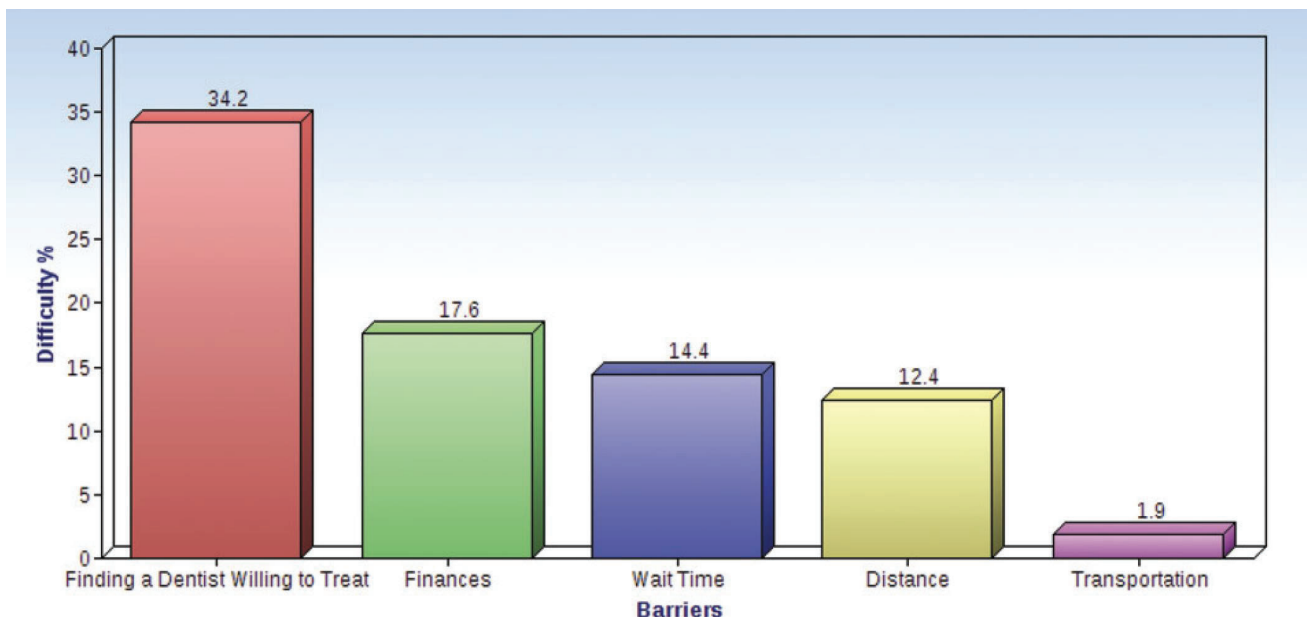


## Disability and HEALTH

<https://www.cdc.gov/ncbddd/disabilityandhealth/infographic-disability-impacts-all.html>



What are the Barriers to Dental Care Access for Persons with Disabilities?



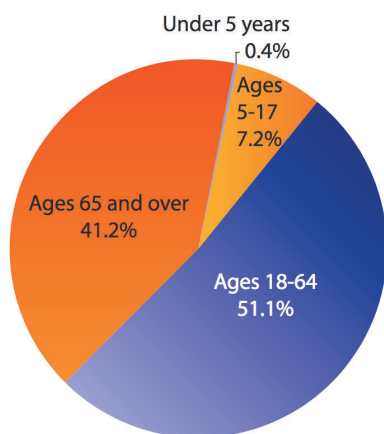
# What are the Oral Health Challenges facing Persons with Disabilities ?

Children with developmental disabilities are twice as likely to have unmet oral health care needs than children without developmental disabilities (Charles, 2010)

13% of children with developmental disabilities in the United States live in poverty (Charles, 2010)

Poor Oral Health Consequences: School absenteeism, learning problems, pain, systemic disease, hospitalization, health consequences later in life, some cases death (Chi, Rossitch, & Beeles)

Age Distribution in the US Population of People with Disabilities, ACS, 2015



92% are over 18 years old...  
Not pediatric!



Reception desk to accommodate those in wheelchairs  
Wide Corridors for wheelchairs and stretchers  
Wayfinding on the floor for the blind



## Care Center for Persons with Disabilities



## Care Center for Persons with Disabilities

- Cart delivery system so there are no handpieces hanging near patients that might grab things
- Ceiling mounted lighting to allow the room to be modified for treatment
- Dental-Ez Hover chair (3 rooms) to allow movement to the side to allow treatment in wheelchair, stroller, or other mobility unit
- All private rooms can accommodate nitrous oxide using a mobile machine that is plugged into a central system
- Wheelchair lift if applicable

