

CALIFORNIA HEALTH FACILITIES FINANCING AUTHORITY (Authority)

Investment in Mental Health Wellness Grant Program (IMHWGP)

Resolution No. MH 2014-06 (First Funding Round)

County of Los Angeles

Quarterly Update

July 31, 2025

The Authority approved a reinstatement of, and an amendment to, Resolution Number MH 2014-06 on February 22, 2018, for an IMHWGP grant for the County of Los Angeles Department of Mental Health (County) in an amount not to exceed \$40,892,700.49 for 240 beds to serve adults in 15 new Crisis Residential Treatment Programs (CRTP); eight new beds in one expanded Crisis Stabilization Unit (CSU), aka Urgent Care Center (UCC); 14 Mobile Crisis Support Teams (MCST) and one clerical staff to provide field-based crisis intervention services to children, adolescents, and adults throughout the County. As a condition of approval, the Authority required the County to provide quarterly updates detailing milestones achieved, progress, and obstacles or challenges related to the completion of the projects.

On December 12, 2024, the Authority approved a ninth amendment to Resolution Number MH 2014-06, granting the County an extension to the open and operational milestone condition to July 31, 2025, as well as extending the grant period and resolution expiration dates to October 31, 2025.

Funding for the MCST and CSU programs has been fully disbursed, and from the total amount of \$35,000,000 allocated to the CRTP programs, the Authority has currently disbursed \$28,000,000 based on the percentage of beds that were open and operational; the remaining \$7,000,000 is currently being processed for disbursement.

The last quarterly update was presented to the Authority on March 27, 2025. The County reports that the last two CRTP projects located at the LAC+USC and the Olive View campuses opened on April 14, 2025 and May 13, 2025, respectively. **All 15 CRTPs are now open and operational.**

The table below reflects the opening dates updated for each CRTP facility located on the four campuses throughout Los Angeles County. Please note that a contracted service provider is not allowed to operate more than one facility at each campus. The service providers selected by the County to operate the CRTP facilities are: Telecare, Central Star Behavioral Health, Valley Star Behavioral Health, Stars Behavioral Health, CRT Programs Inc., and Exodus Recovery Inc.

Crisis Residential Treatment Program Open & Operational Dates

Service Provider	LAC+USC Campus (4 CRTPs, 64 beds)	MLK Campus (1 CRTP, 16 beds)	Olive View Campus¹ (5 CRTPs, 80 beds)	Rancho Los Amigos Campus (5 CRTPs, 80 beds)
Telecare	Open and operational December 12, 2022		Open and operational December 5, 2022	Open and operational October 3, 2022
Central Star Behavioral Health	Open and operational November 29, 2023		Open and operational May 17, 2023	Open and operational January 17, 2023
Valley Star Behavioral Health	Open and operational February 22, 2024	Open and operational March 23, 2023	Open and operational November 29, 2023	Open and operational June 14, 2023
Stars Behavioral Health			Open and operational June 28, 2024	Open and operational December 27, 2023
CRT Programs Inc.			Open and operational May 13, 2025	Open and operational October 16, 2024
Exodus Recovery, Inc.	Open and operational April 14, 2025			

¹ The UCC facility (service provider Pacifica) started providing services on August 12, 2022.

LAC+USC Campus
1774 Zonal Avenue, Los Angeles
Four CRTs, 64 Beds



Bedroom



Dining Area



Martin Luther King Campus
Mark Ridley-Thomas Behavioral Health Center
12021 Wilmington Avenue, Los Angeles
One CRT, 16 Beds



Nurses Station



Bedroom



Martin Luther King Campus
Mark Ridley-Thomas Behavioral Health Center
12021 Wilmington Avenue, Los Angeles
One CRT, 16 Beds

Kitchen



Bathroom



Olive View Campus
14119 Bucher Avenue, Sylmar
Five CRTs, 80 Beds



Reception



Olive View Campus
14119 Bucher Avenue, Sylmar
Five CRTs, 80 Beds

Bedroom



Bathroom



Laundry Room



Group Room

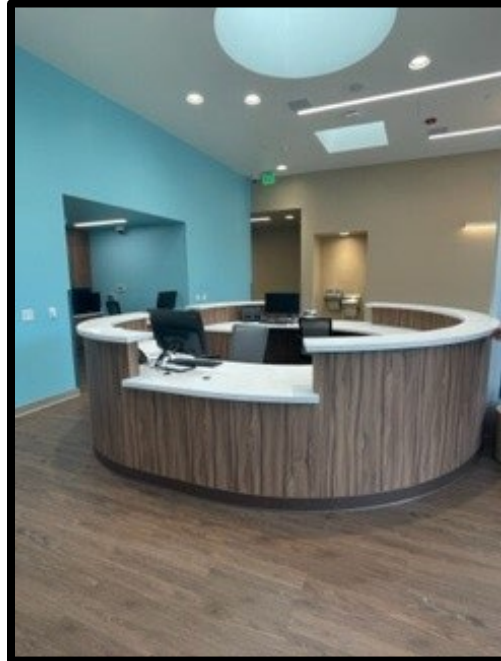


Olive View Campus
14119 Bucher Avenue, Sylmar
One CSU, 8 Beds

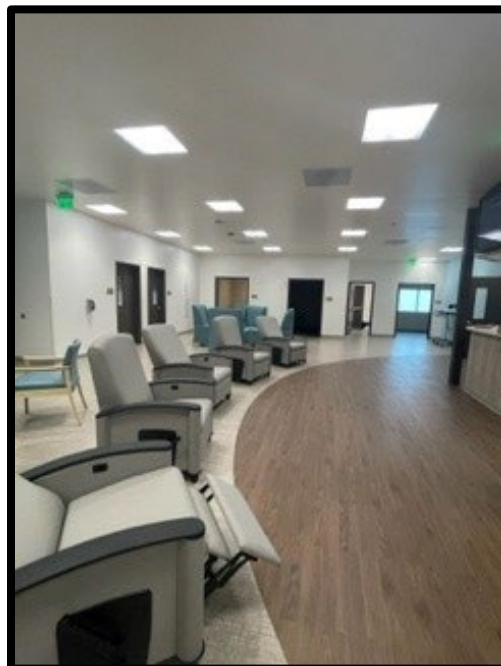
Waiting Room



Reception



Beds/Recliners



Rancho Los Amigos Campus
7725 Leeds Street, Downey
Five CRTs, 80 Beds



Bedroom Door



Food Service



Rancho Los Amigos Campus
7725 Leeds Street, Downey
Five CRTs, 80 Beds

Bathroom



Laundry Room



Common Area

