

2018 TCAC/HCD OPPORTUNITY AREA MAP

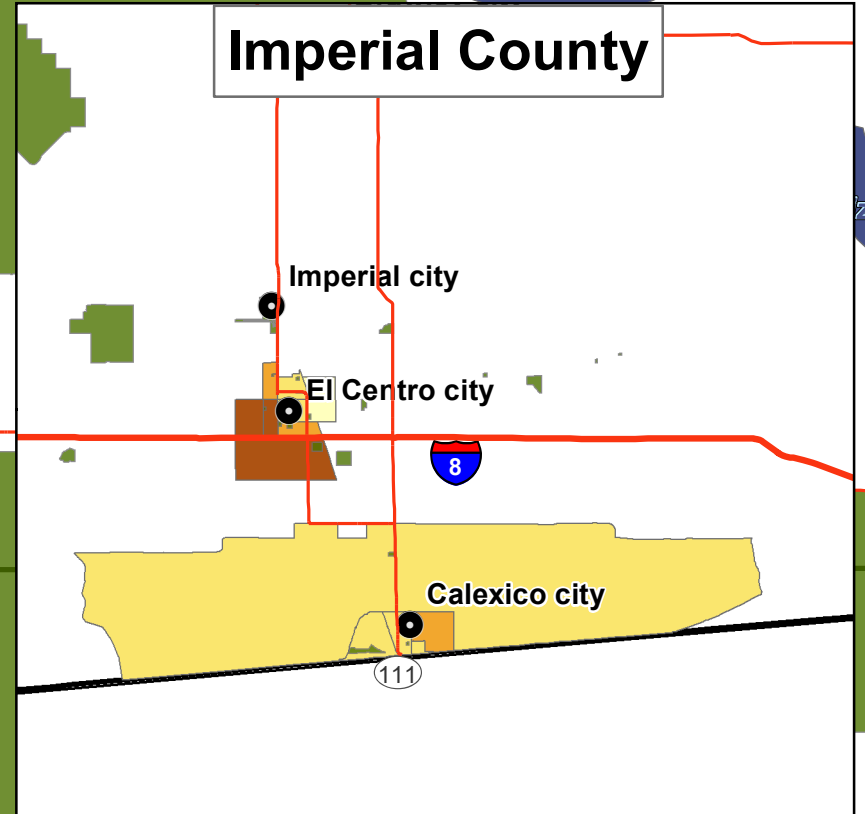
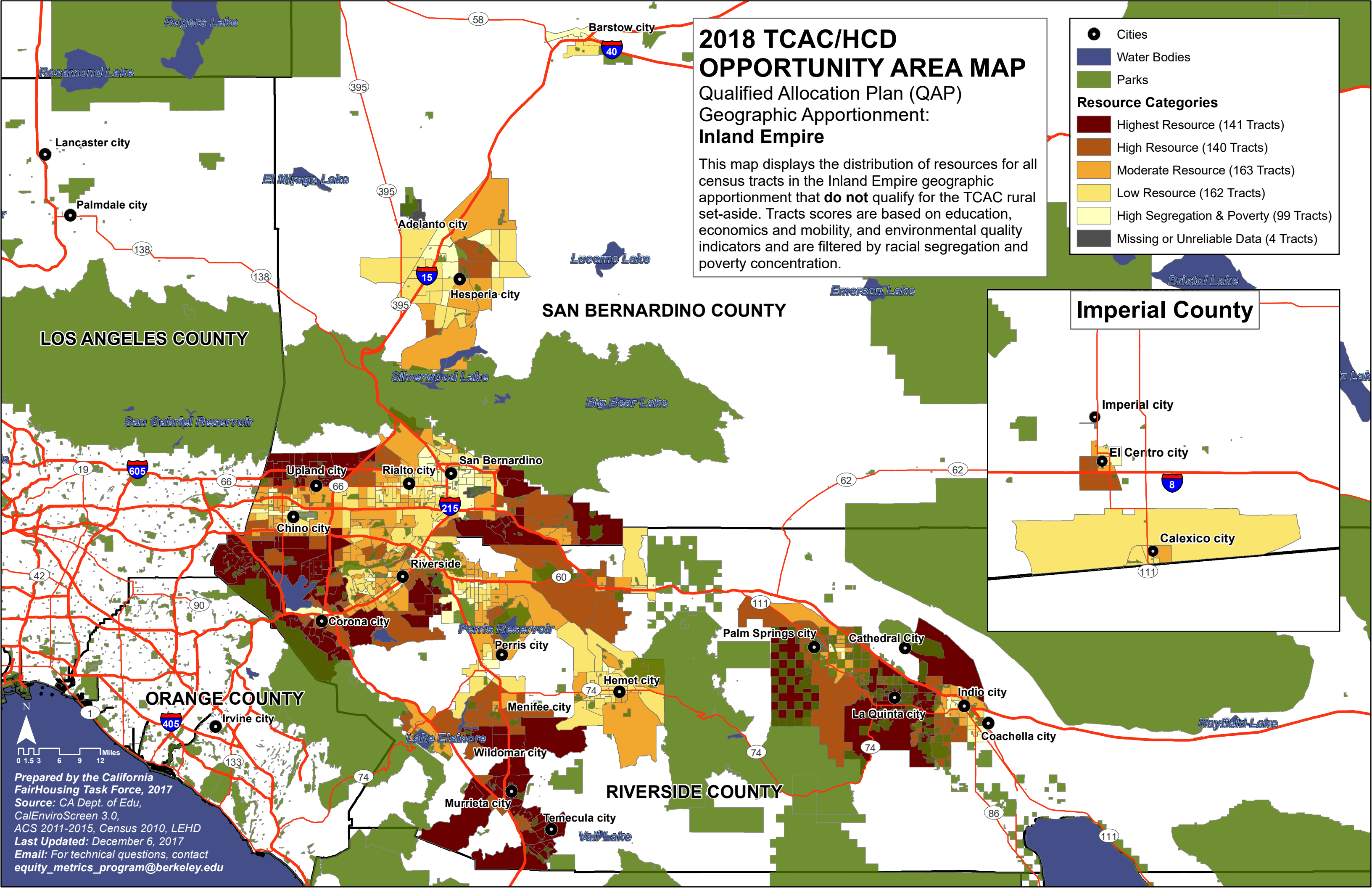
Qualified Allocation Plan (QAP) Geographic Apportionment: Inland Empire

This map displays the distribution of resources for all census tracts in the Inland Empire geographic apportionment that **do not** qualify for the TCAC rural set-aside. Tracts scores are based on education, economics and mobility, and environmental quality indicators and are filtered by racial segregation and poverty concentration.

- Cities
- Water Bodies
- Parks

Resource Categories

- Highest Resource (141 Tracts)
- High Resource (140 Tracts)
- Moderate Resource (163 Tracts)
- Low Resource (162 Tracts)
- High Segregation & Poverty (99 Tracts)
- Missing or Unreliable Data (4 Tracts)



0 1.5 3 6 9 12 Miles

Prepared by the California FairHousing Task Force, 2017
 Source: CA Dept. of Edu, CalEnviroScreen 3.0, ACS 2011-2015, Census 2010, LEHD
 Last Updated: December 6, 2017
 Email: For technical questions, contact equity_metrics_program@berkeley.edu